

## Field Report Memorandum

**To:** Chad Oberly, LCWA

**From:** Sebastian De Leon, Tidal Influence

**Cc:** Eric Zahn, Tidal Influence; Mark Stanley, LCWA

**Date:** October 29<sup>th</sup>, 2025

**Subject:** Land Management Field Report

Sites Inspected: SLCW/Gum Grove, State Lands Parcel, Zedler Marsh, Bryant Lease West, and Steamshovel Slough  
Inspection Dates: September 24<sup>th</sup>, 2025

Note: The locations of critical observations and issues noted in this document are called out on the map on the final page. Photos of certain issues/observations are attached at the end of the report.

### SLCW

---

1. Access –
  - a. Tidal Influence staff oversaw the installation of a gate leading to the bluff scrub restoration site along 1<sup>st</sup> street.
2. Security – OK
3. Land Stewardship –
  - a. Tidal Influence staff moved the on-site portable toilet to be located closer to the SLCWRP groundbreaking event.
  - b. Tidal Influence cleared material alongside SLCW storage container in preparation for SLCWRP groundbreaking event.

### State Lands Parcel

---

4. Access –
  - a. The north gate hinges are still loose, making the gate difficult to fully open.
    - i. **At the LCWA's request, Tidal Influence staff can obtain quotes from contractors for repairs.**
5. Security – OK
6. Land Stewardship – OK

### Zedler Marsh

---

7. Access – OK
8. Security –
  - a. Unauthorized motorized biking ramps observed on Calloway Marsh. Bike ramps were demolished on site.
    - i. **Tidal Influence staff will continue to document unauthorized use and coordinate with local authorities when appropriate to minimize impact to local wetlands. It is recommended that the LCWA bring awareness of motorized biking activities to city councilmembers and attempt to work with local community members to establish a community wetland watch initiative to keep an eye out for suspected unauthorized use during off hours.**
  - b. Unauthorized individual captured on security camera at Zedler Marsh access road.
    - i. **Tidal Influence will install new security cameras on site to capture additional evidence and continue to monitor/document unauthorized property use. Authorities will be contacted when appropriate.**
9. Land Stewardship – OK

## Bryant Lease West

---

### 10. Access –

- a. SGR levee gates unlocked and open, allowing for access to the property.
  - i. **Tidal Influence staff remains in coordination with LA Public Works staff to address unauthorized access and damages to the SGR levee access gates.**
- b. A segment of the PHC access gate leading to the SGR levee was removed, allowing for unrestricted access to site.
  - i. **Tidal Influence staff remains in coordination with LA Public Works staff to address unauthorized access and damages to the SGR levee access gate.**
- c. The 2nd Street access gate leading to the SGR levee was damaged and open.
  - i. **Tidal Influence staff remains in coordination with LA Public Works staff to address unauthorized access and damages to the SGR levee access gate.**

### 11. Security –

- a. Unauthorized biking activities captured on security footage.
  - i. **Tidal Influence staff will continue to document unauthorized use and coordinate with local authorities when appropriate to minimize impact on LCWA properties. It is recommended that the LCWA bring awareness of biking activities to city councilmembers and attempt to work with local community members to establish a community wetland watch initiative to keep an eye out for suspected unauthorized use during off hours.**
- b. Encampment observed underneath SGR cattle grate. A ventilation hole faces the BLW property and provides direct access to the site.
  - i. **Tidal Influence staff have relayed the information regarding unauthorized use to the LCWA's designated homeless liaison contractor.**

### 12. Land Stewardship – OK

## Steamshovel Slough

---

### 13. Access – OK

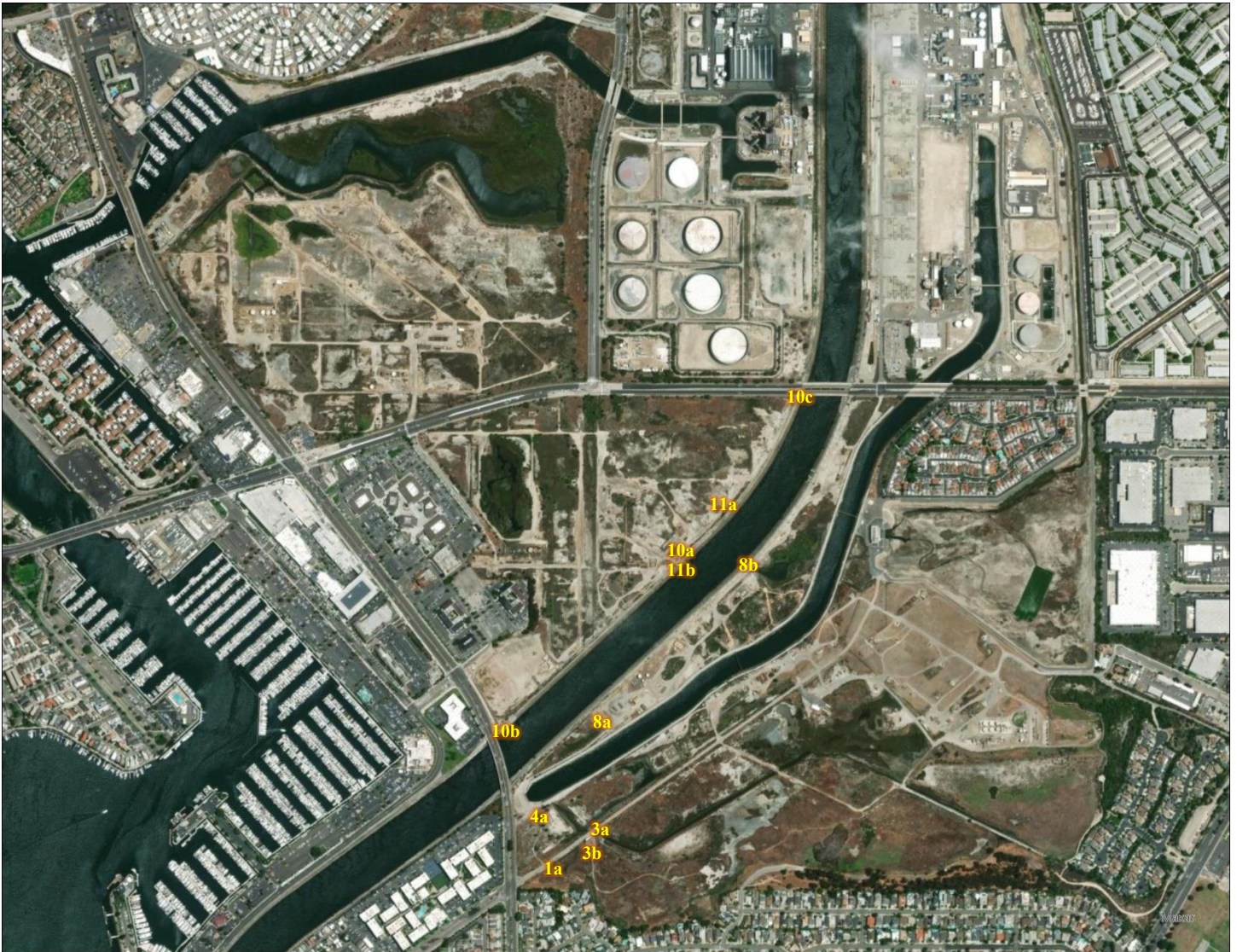
### 14. Security – OK

### 15. Land Stewardship – OK

## Map

---

The photos of the issues and observations detailed above are labeled by number on the map below. The number indicates the location of these issues and observations.





## SLCW



Gate installation leading to bluff scrub restoration site.



3a<sup>1</sup>

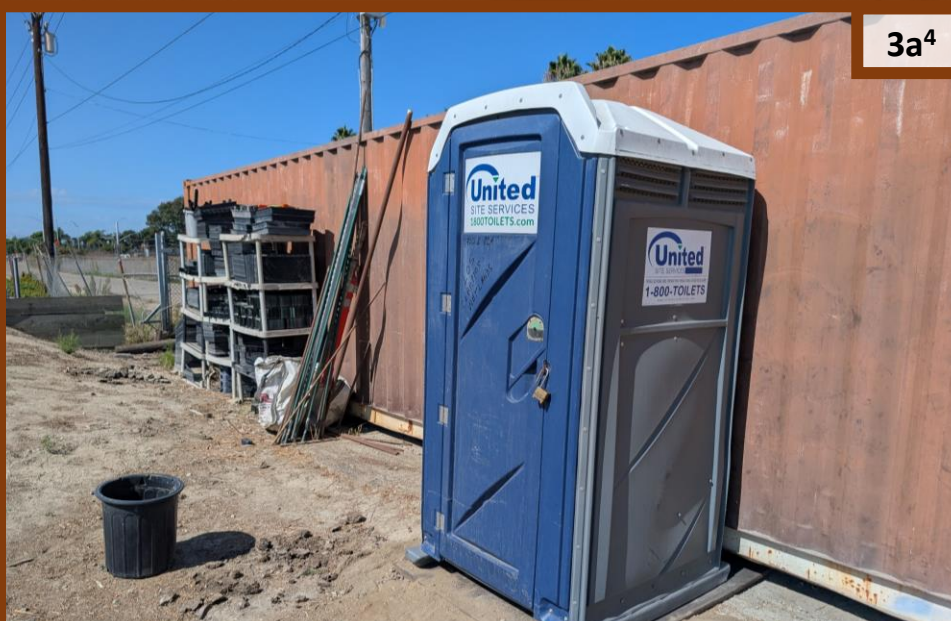
SLCW

3a<sup>2</sup>



3a<sup>3</sup>

3a<sup>4</sup>



Moved portable toilet closer to SLCWRP groundbreaking site.



3b<sup>1</sup>

SLCW



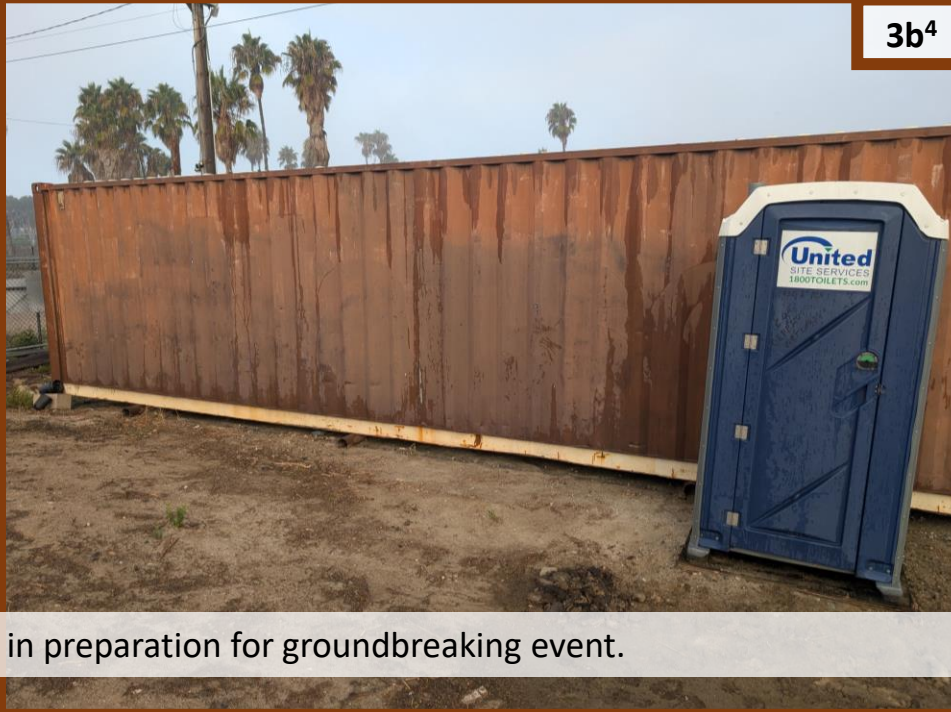
3b<sup>2</sup>



3b<sup>3</sup>



3b<sup>4</sup>



Cleared material along storage container in preparation for groundbreaking event.



# State Lands



Damaged gate hinges.



8a<sup>1</sup>



8a<sup>2</sup>

Zedler



Demolished bike ramp at Calloway Marsh.

8b<sup>1</sup>

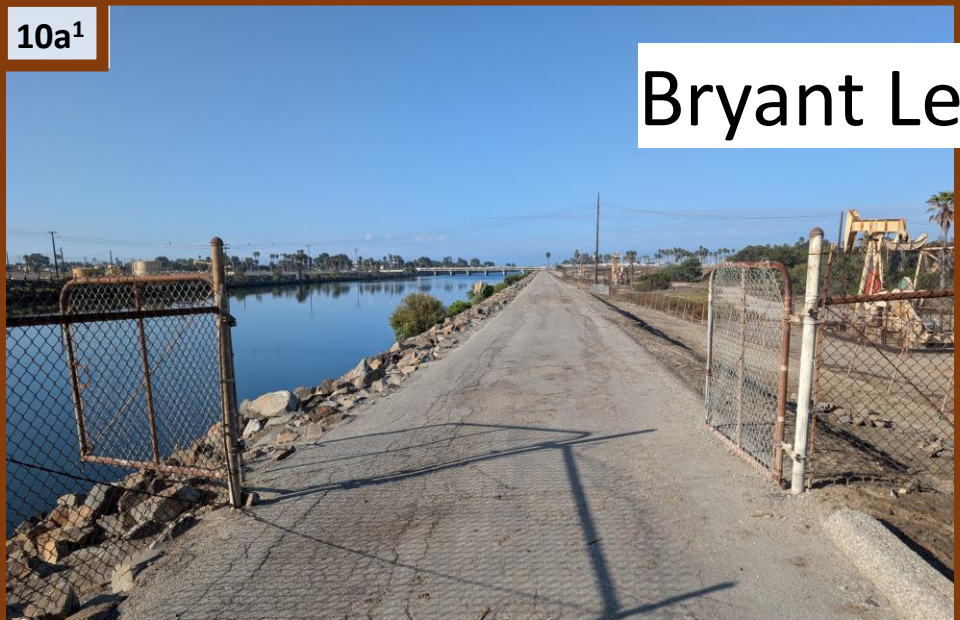


8b<sup>2</sup>



Trespassing captured by security camera on access road.





# Bryant Lease West

SGR levee gates open and unlocked.



PCH access gate allows for unrestricted access.



2<sup>nd</sup> street access gate damaged and open.



11a

# Bryant Lease West



Unauthorized biking captured on security camera footage.

11b<sup>1</sup>

Encampment underneath SGR cattle grate.

11b<sup>2</sup>

Encampment ventilation hole facing Bryant Lease West property.

11b<sup>3</sup>