

Los Cerritos Wetlands Authority**Date: August 2, 2018****To: Governing Board Members****From: Mark Stanley, Executive Officer****Subject: Item 7: Status Report on Workplan Implementation including Los Cerritos Wetlands Stewardship Program and Los Cerritos Wetlands Conceptual Restoration Plan.**

BACKGROUND: At the September 19, 2006 meeting, the Board adopted the Workplan set forth below. An updated description of the status of each workplan item is detailed in the following table:

<u>AUGUST 2018 WORKPLAN STATUS UPDATE</u>		
LCWA Projects		
Task	Description	Status
Potential Funding Sources		
State Water Board Once-through Cooling Interim Mitigation Funding will depend on mitigation fees collected	The Once-Through Cooling (OTC) Policy requires owners or operators of existing power plants to implement measures to mitigate interim impingement and entrainment impacts resulting from their cooling water intake structures. The interim mitigation period commenced on October 1, 2015 and continues up to and until owners or operators achieve their final compliance deadlines as outlined in the OTC Policy.	Funding will depend on the mitigation fees collected by the State Coastal Conservancy
Wetlands Recovery Project In-Lieu Fee Program Progress Report Funding will depend on mitigation fees collected	Implementation of the proposed Program will provide a potential funding source to implement projects that fulfill the SCWRP goals, thereby generating substantial ecological benefits within the Program's Service Area, while also providing a cooperative mechanism for Compensatory Mitigation that addresses the needs of multiple federal, state, and local agencies.	Funding will depend on mitigation fees collected http://scwrp.org/

Task	Description	Status
Potential Funding Sources		
Water Quality, Supply, and Infrastructure Improvement Act of 2014 (Proposition 1)	Voters, would authorize \$7.545 billion dollars in general obligation bonds to fund ecosystems and watershed protection and restoration, water supply infrastructure projects, including surface and groundwater storage, and drinking water protection.	Funding is dependent on State Agency Funding Grant cycles http://resources.ca.gov/grants/ http://bondaccountability.resources.ca.gov/p1.aspx
Capital Projects & Initiatives		
Los Cerritos Wetlands Planning and Restoration Project to complete the environmental review of the CRP per CEQA	Determine if the CEQA document should be a Programmatic or Project Specific level analysis.	Funding is provided to conduct CEQA analysis to engage an environmental consultant contract. Environmental Science Associates is under contract and the project kick-off meeting occurred on December 4th. A public workshop occurred on March 28 th at the Mary Wilson Library in Seal Beach California. This workshop focused on educating the public on the planning process and took input on public access. ESA is currently working on the draft optimized restoration plan. A Technical Advisory Committee meeting has been scheduled.
Los Cerritos Wetlands Acquisition of the Bryant Properties	Complete the acquisition of all property owned by the Bryant Family for an addition of 18 acres along the frontage of 2 nd Street- Westminster Avenue added to the property preserved for purity as public.	The state approved the final appraisal value of Assessor Parcel Nos 7237-020-053; 054. Staff and Legal Counsel are working with Steve Bryant and Kevin Brazil to acquire the property.

Los Cerritos Wetlands LLC Restoration and Oil Consolidation Project	The project would implement a comprehensive wetlands restoration project which will restore a privately-owned oil field in the City of Long Beach through creation of a wetlands mitigation bank. The project includes the relocation of oil operations currently located on the Synergy Site and City-owned property to two off-site properties (LCWA's OTD Parcel and Pumpkin Patch site).	<p>The project was approved by the LB Planning Commission on November 30th, 2017. It was then approved by the LB City Council on January 16th, 2018. The project is expected to go before the California Coastal Commission in 2018.</p> <p>LCWA continues to track all other aspects of the project including the mitigation bank and entitlement process.</p>
---	--	---

Task	Description	Status
Capital Projects & Initiatives		
Option Agreement to transfer properties between Los Cerritos Wetlands LLC(LCWLLC) and the LCWA	LCWLLC and the LCWA executed an option agreement that provides for the exchange of real property. Agreement was signed on 9/2/16 to transfer the LCWA APN 7237-019-809, approximately 5.11 acres for the LCWLLC property described as APNs 7237-017-010; 7237-017-011; 7237-017-012; 7237-0217-013; 7237-017-014; 7237-017-019; 7237-017-805; 7237-017-806; 7237-017-807; 7237-017-808;7237-017-809 approximately 154 acres.	The LCWA received the option agreement funds which will be used to hire consultants to review technical studies.
LCWA Mitigation Policy	Staff will require consultant services in order to assist in the development of the mitigation policy and currently the FY17/18 Budget does not have any unrestricted funds to support authorizing a consultant contract.	The LCWA would require additional funds from its joint partners in order to provide the financial support for authorizing a consultant contract for services and development of the mitigation policy. The cost to develop the mitigation policy would range from \$50,000 to \$100,000. These cost estimates were determined by researching various non-profits, regulatory agencies and other local and state agencies whom have completed similar and comparable mitigation policies.

<p>DWP Parcel (PCH) at Pacific Coast Highway</p>	<p>This site poses significant opportunities for enhancing public access to the eastern side of the Los Cerritos Wetlands area adjoining the San Gabriel River.</p>	<p>Recently the LCWA was made aware the City of Los Angeles would replace the existing fence-line with an 8-ft tall, tight-meshed, chain-link fence with razor wire around the entire Haynes Cooling Channel. This fencing project will impact over 2,000 feet of LCWA fence line, including sections that run along sensitive habitat at Zedler Marsh.</p> <p>A Coastal Development Permits was approved that included conditions requested by the LCWA. DWP has not made progress toward implementing this project on the ground.</p>
--	---	---

Task	Description	Status
City of Long Beach Pending Environmental Documents		
City of Long Beach Southeast Area Specific Plan (SEASP)	The City of Long Beach continues to work on the Southeast Area Specific Plan which covers approximately 1,500-acres of southeast Long Beach. http://www.lbds.info/seadip_update/	<p>The Draft Environmental Impact Report was approved by City of Long Beach Planning Commission and Long Beach City Council with some changes to the document. Buildings over 7 stories tall are not allowed on the Marketplace Property, but can be allowed on the other sites under certain conditions. The plan includes a Wetlands Mitigation Fund that will be used to offset potential impacts to Los Cerritos Wetlands habitat. The LCWA is named in the document as an entity that the City will consult when developments are proposed.</p> <p>However, approval of the project's DEIR has been stalled since the Los Cerritos Wetlands Land Trust filed a writ of mandate to CA Superior Court following the City Council's decision stating the City was unlawful to approve SEASP.</p>
Los Cerritos Wetlands LLC (LCWLLC) Los Cerritos Wetlands Restoration and Oil Consolidation Project	<p>The project is comprised of four sites located at: 6422 E. 2nd Street (LCW LLC Oil Field Site); 6701 E. Pacific Coast Highway (Pumpkin Patch site); northeast corner of Studebaker Road and 2nd Street (LCWA OTD Parcel); and 2nd Street and Shopkeeper Road (City-Property site) in the City of Long Beach.</p> <p>http://www.lbds.info/planning/environmental_planning/environmental_reports.asp</p>	<p>Draft EIR was completed and released for public comment in July 2017. The LCWA's team of consultants provided comments on the Draft EIR directly to the applicant. The mitigation bank prospectus has been reviewed by the agencies after no public comment was received.</p> <p>The EIR went before and was approved by the Planning Commission on November 30th 2017 and the LB City Council on January 16th, 2018. The EIR will go before the CA Coastal Commission in 2018. The LCWA and BOMP are also working with the City to make amendments to the Local Coastal Plan.</p>

Task	Description	Status
Lease Agreements		
<p>OTD/Edison Parcel Los Angeles County APN 7237-019-809</p> <p>Ellis Equipment, Inc. Lease Agreement</p> <p>Lease Fee = \$2,090 per month</p>	<p>The OTD Parcel is located on the northeast corner of Studebaker road and 2nd Street in the City of Long Beach and commonly referred to as the 'Edison Parcel' or 'Offer To Dedicate (OTD) Parcel.'</p>	<p>Ellis lease agreement utilizes only a portion of the OTD Parcel for storage of construction material. Ellis lease agreement has been amended to a month-to-month lease.</p>
<p>OTD/Edison Parcel Los Angeles County APN 7237-019-809</p> <p>D & S Washout Systems Lease Agreement</p> <p>Lease Fee = \$950 per month</p>	<p>The OTD Parcel is located on the northeast corner of Studebaker road and 2nd Street in the City of Long Beach and commonly referred to as the 'Edison Parcel' or 'Offer To Dedicate (OTD) Parcel.'</p>	<p>D & S Washout Systems Lease Agreement utilizes a portion of the OTD parcel for the storage of work trucks and construction materials. The lease agreement has been amended to a month-to-month lease.</p>
<p>California State Lands Commission Lease Agreement PRC9005.9. Orange County APNs: 043- 160-47; 043-160-36; 043-160-45; and 043- 160-53</p> <p>August 14, 2012 through August 13, 2022</p>	<p>The State Lands Commission issued the LCWA a lease agreement for four parcels approximately totaling four acres adjacent to the Los Cerritos Wetlands Authority Hellman/Phase 2 in the City of Seal Beach.</p>	<p>Staff coordinates with SLC office for ongoing repairs of fence property and continues to stage the Los Cerritos Wetlands Stewardship Program from this site.</p>
<p>City of Long Beach Marketplace Marsh License Agreement for Los Angeles County APN 7237-020-21</p> <p>June 7, 2010 through June 30, 2020</p>	<p>The property is approximately 29.38-acres south of 2nd Street</p>	<p>The LCWA recently updated the license agreement to allow tours of the wetlands and extended the license agreement through June 30, 2020.</p>

Task	Description	Status
Grants – COMPLETED		
A total of 12 grants have been completed by the LCWA and LCWLT	A total of \$6,228,400 grant funds have been acquired and applied towards acquisition, restoration studies, restoration projects, and education programs.	See link for details on all completed grants.
Grants – ACTIVE		
<p>National Coastal Wetlands Conservation Grant Application</p> <p><u>Active</u></p>	<p>The State Coastal Conservancy (SCC) applied on behalf of the LCWA for the NCWC grant.</p> <p>Performance Period January 29, 2013 through December 31, 2017</p> <p>Total Funding \$1,000,000 Funding Remaining \$1,000,000</p>	<p>The National Coastal Wetlands Conservation Grant was submitted on July 13, 2012 by the SCC for the acquisition of the Steam Shovel Slough. The SCC was awarded the \$1,000,000 grant for the acquisition of Steam Shovel Slough on January 29, 2013. The funds have been re-assigned to the Bryant acquisition.</p> <p>An extension to for this grant was been approved. The new deadline to use these funds is December 31st, 2018.</p>
<p>State Coastal Conservancy Proposition 1</p> <p>Los Cerritos Wetlands Planning and Restoration Project</p> <p><u>Active</u></p>	<p>Grants funds to complete the environmental review of the CRP per CEQA. Environmental review of the CRP's three proposed alternatives or a hybrid alternative.</p> <p>Performance Period February 1, 2017 through June 30, 2019</p> <p>Total Funding \$500,000 Funding Remaining: \$381,751.90</p>	<p>The LCWA was successfully awarded the grant funds for the CEQA Planning Document, implementation of the project has commenced.</p>
<p>San Gabriel and Lower Los Angeles Rivers and Mountains Conservancy Grant State Coastal Conservancy Proposition 1</p> <p>Los Cerritos Wetlands Planning and Restoration Project Proposition 1 Grants</p> <p><u>Active</u></p>	<p>Grants funds to complete the environmental review of the CRP per CEQA. Environmental review of the CRP's three proposed alternatives or a hybrid alternative.</p> <p>Performance Period February 1, 2017 through June 30, 2019</p> <p>Total Funding \$350,000 Funding Remaining: \$299,027.61</p>	<p>The LCWA was successfully awarded the grant funds for the CEQA Planning Document, implementation of the project has commenced.</p>

Task	Description	Status
Grants – ACTIVE		
<p>San Gabriel and Lower Los Angeles Rivers and Mountains Conservancy Grant State Coastal Conservancy Proposition 1</p> <p>Los Cerritos Wetlands Acquisition of the Bryant Properties</p> <p><u>Active</u></p>	<p>LCWA is seeking to acquire the frontage and remaining Bryant-Dakin Properties located along 2nd Street/Westminster Avenue in the City of Long Beach totaling approximately 18 acres (Los County Assessor Parcel Nos 7237-020-053 and 7237-020-054).</p> <p>Performance Period February 1, 2017 through December 31, 2020</p> <p>Total Funding \$1,000,000 Funding Remaining: \$1,000,000</p>	<p>The LCWA was successfully awarded the grant funds and negotiations will commence immediately.</p> <p>Appraisals have been approved by the state. Staff and Legal Counsel have entered into negotiations with landowners.</p>
Consultant Contracts - COMPLETED		
6 Completed Consultant Contracts	Please see link for details.	
Consultant Contracts - ACTIVE		
<p>LCWA16003 Tidal Influence, LLC Property and Project Management Services</p> <p><u>Active</u></p>	<p>The LCWA authorized a contract to Tidal Influence for grant and project management services, property management services for all the LCWA properties, coordination of the Stewardship Program and on-call services as necessary.</p> <p>Performance Period March 1, 2017 through March 1, 2019</p> <p>Total Funding: \$89,000 Remaining Funding: \$54,775.00</p>	<p>See attached Land Management Reports from April - June 2018 and staff report on the Los Cerritos Wetlands Oil Consolidation and Wetlands Restoration Project.</p>

Task	Description	Status
Consultant Contracts - ACTIVE		
LCWA 13003 Los Cerritos Wetlands Stewards Homeless Liaison Contract Amended <u>Active</u>	The Los Cerritos Wetlands Stewards and the LCWA have a mutual interest in the implementation of the Stewardship Program which will promote and provide leadership in conservation for educating members as well as the community to further the appreciation of the wetlands habitat conservation.	The contract addresses the safety and security of the LCWA properties and meets the LCWA goals and objectives. Currently the Los Cerritos Wetlands Stewards are coordinating any removal of homeless encampments at several locations within the LCWA properties.
Memorandum of Understanding/Agreements		
LCWA08008 Signal Hill Petroleum, Inc. Coastal Development Permit for Vegetation Removal LCWA Phase 1 Properties <u>Active</u>	Signal Hill Petroleum, Inc. conducts the following activities (1) removing vegetation, debris and soil from the storm water collection and retention system, (2) controlling vegetation surrounding all oil pumps, electrical poles, and pipelines, and (3) removing vegetation surrounding all oil production facilities and buildings. Performance Period February 1, 2018 through January 31, 2020 Total Funding: \$20,000 Remaining Funding: \$20,000	Tidal Influence was contracted to manage MOA. Signal Hill Petroleum, Inc. annually provides \$10,000 to offset their impacts from proposed work. The LCWA has been implementing the 2018 work plan as approved by the Coastal Commission in Spring 2018.
LCWA13002 Southern California Edison Company Memorandum of Agreement <u>Active</u>	The LCWA entered into a Memorandum of Agreement with Southern California Edison Company to accept funds to provide out-of-kind compensatory mitigation for impacts to shoreline habitat at Catalina Island. Performance Period June 14, 2014 through June 30, 2020 Total Funding: \$25,000 Remaining Funding: \$2,722.43	Tidal Influence was contracted to manage this MOA. Staff has completed the Habitat Mitigation and Monitoring Plan which allowed for procurement and installation of 425 salt marsh plants. Tidal Influence has submitted the year 3 monitoring report in spring 2018 to Southern California Edison for the purpose of presenting the existing conditions of the 0.16 acre restoration site at Zedler Marsh and comparing it to the data collected in previous years.

LCW Stewardship Program		
Task	Description	Status
Potential Funding Sources		
City of Long Beach Measure A, Public Safety, Infrastructure Repair and Neighborhood Services Measure	The City of Long Beach established a one cent (1%) transactions and use (sales) tax for six years, generating approximately \$48 million annually, declining to one-half cent for four years and then ending, requiring a citizens' advisory committee and independent audits, with all funds remaining in Long Beach.	The City of Long Beach allocated an estimated \$500,000 for restoration work for the Los Cerritos Wetlands. The status of the funding is pending.
Los Angeles County: Safe, Clean Neighborhood Parks, Open Space, Beaches, Rivers Protection, and Water Conservation Measure Section 6(e); subsection 2(A) Supervisor Janice Hahn, Fourth District Potentially \$463,983 in funding	To replace expiring local funding for safe, clean neighborhood/city/county parks; increase safe playgrounds, reduce gang activity; keep neighborhood recreation/senior centers, drinking water safe; protect beaches, rivers, water resources, remaining natural areas/open space; 1.5 cents will be levied annually per square foot of improved property in Los Angeles County, with bond authority, requiring citizen oversight, independent audits, and funds used locally.	Up to fifteen percent (15%) shall be set aside and designated as the maintenance and servicing amount, and shall be used only to maintain and service, including resource protection activities for the capital outlay projects funded by the District... ...The maintenance and servicing amount shall be allocated each year as follows: ...point five percent (0.5%) to the Los Cerritos Wetlands Authority... An estimated \$92,796,612 in Annual Taxes to be collected.
Education Programs		
Public Access Improvement and Wetlands Restoration	Restoration and enhancement of existing wetlands function is one of the primary objectives of the LCWA. Public access for wildlife viewing and enjoyment may involve site improvements.	LCWA has successfully partnered with Los Cerritos Wetlands Land Trust (LCWLT) and they have successfully applied for and received several grants that provide for the Los Cerritos Wetlands Stewardship Program monthly nature walks through December 2018. Please refer to the attached Exhibit B: Los Cerritos Wetlands Stewardship Program updates for a full report.

Task	Description	Status
Capital Projects & Initiatives		
<p>County of Orange, OC Public Works Contract (MA-080-15010071)</p> <p><u>Active</u></p>	<p>Orange County Public Works entered into contract with LCWA to provide wetland restoration services and supplies including five years of monitoring reports from the LCWA's Stewardship Program</p> <p>Performance Period September 1, 2014 through September 1, 2019</p> <p>Total Funding \$155,500 Funding Remaining: \$20,780.01</p>	<p>Tidal Influence was contracted to manage and implement the project. Planting and site maintenance regularly occurs on the Orange County mitigation site, and staff continue to monitor the progress on the project.</p> <p>LCWA staff will submit the Year 4 Monitoring Report in December of 2018.</p>
<p>Tarplant Mitigation Project - Ascon</p> <p><u>Active</u></p>	<p>The LCWA entered into a Memorandum of Agreement with Ascon to accept mitigation funds for the Southern Tarplant Mitigation Plan for a five year mitigation plan to grow and monitor Southern Tarplant at Zedler Marsh</p> <p>Performance Period November 3, 2016 through November 1, 2021</p> <p>Year 1 Funding: \$96,070 Year 1 Remaining Funding: \$0 Year 2 Funding: \$62,410 Year 2 Remaining Funding: \$251,09.24</p>	<p>Tidal Influence was contracted to manage and implement this project, seeding, and monitoring plan at Zedler Marsh. Staff continues to monitor the progress on the project.</p> <p>Regular watering and invasive species control are currently conducted on site. Annual monitoring was conducted in July of 2018.</p>
Grants – COMPLETED		
<p>A total of 12 grants completed by the LCWA and LCWLT</p>	<p>A total of \$6,228,400 grant funds were acquired and used towards acquisition, restoration studies, restoration projects, and education programs.</p>	<p>See link for details on all completed grants.</p>

Task	Description	Status
Grants – ACTIVE		
<p>The Orange County Community Fund</p> <p>Warne Family Endowment Fund for Endangered Species Protection Grant</p> <p><u>Active</u></p>	<p>The LCWLT applied for the Warne Foundation Grant Program to fund Belding's Savannah Surveys at Los Cerritos Wetlands.</p> <p>Performance Period January 2017 through December 31, 2018</p>	<p>Belding's Savannah Sparrow surveys will be conducted twice a month during breeding and nesting season to determine breeding territories for pairs of Belding's. A portion of the grant also goes towards restoring Belding's Savannah Sparrow habitat outside of nesting season.</p> <p>This grant was reapplied for and approved for a second year of monitoring and restoration efforts. Monitoring has concluded and data is being analyzed for reporting.</p>
<p>California State Coastal Conservancy</p> <p>Explore the Coast Grant Program</p> <p><u>Active</u></p>	<p>The Los Cerritos Wetlands Land Trust (LCWLT) applied for the Explore the Coast Grant Program to fund education programs at Zedler Marsh.</p> <p>Total Funding: \$15,560 Funding Remaining: \$7402.61</p>	<p>The LCWLT will provide bus transportation to and from Zedler Marsh for 15 field trips of LBUSD 3rd grade students.</p>

Memorandum of Understanding/Agreements		
<p>Signal Hill Petroleum, Inc. (SHPI) Memorandum of Agreement</p> <p><u>Active</u></p>	<p>The LCWA entered into a Memorandum of Agreement with SHPI to use specific areas within the SHPI current exclusive easement for growth of Southern Tarplant under the Southern Tarplant Mitigation Plan.</p> <p>Performance Period February 3, 2017 through perpetuity</p>	<p>The LCWA will have access to these specific areas within the SHPI exclusive easement into perpetuity.</p>
<p>LCWA13002 Southern California Edison Company Memorandum of Agreement</p> <p><u>Active</u></p>	<p>The LCWA entered into a Memorandum of Agreement with Southern California Edison Company to accept funds to provide out-of-kind compensatory mitigation for impacts to shoreline habitat at Catalina Island.</p> <p>Performance Period June 14, 2014 through June 30, 2020</p> <p>Total Funding: \$25,000 Remaining Funding: \$2,722.43</p>	<p>Tidal Influence was contracted to manage MOA. Staff has completed the Habitat Mitigation and Monitoring Plan which allowed for procurement and installation of 425 salt marsh plants.</p> <p>Tidal Influence has completed the year 3 monitoring report for Southern California Edison for the purpose of presenting the existing conditions of the 0.16 acre restoration site at Zedler Marsh and comparing it to this data collected this past year.</p>
<p>LCWA13001 Aquarium of the Pacific Memorandum of Agreement</p> <p><u>Active</u></p>	<p>The LCWA entered into a Memorandum of Agreement in order to provide a citizen science sea turtle monitoring program for the general public.</p> <p>Performance Period August 11, 2016 through December 30, 2018.</p>	<p>For updates on the citizen science sea turtle monitoring program, please visit http://www.aquariumofpacific.org/give/member-ship/seaturtles</p>
<p>LCWA13000 Los Cerritos Wetlands Land Trust Memorandum of Agreement</p> <p><u>Active</u></p>	<p>The LCWA entered into a MOA with the Los Cerritos Wetlands Land Trust for stewardship services of the Los Cerritos Wetlands Stewardship Program</p> <p>Performance Period August 11, 2016 through December 30, 2018.</p>	<p>Please see the attached Los Cerritos Wetlands Stewardship Program Summary Report.</p>

Task	Description	Status
Memorandum of Understanding/Agreements		
Memorandum of Agreement with the El Dorado Audubon <u>Active</u>	El Dorado Audubon is working with the LCWA to develop bird walks at LCWA Phase 2 properties. Performance Period February 11, 2016 through December 30, 2018.	Please see the attached El Dorado Audubon Society report for a summary of the Los Cerritos Wetlands Nature/Bird Walks. For more information, please visit http://eldoradoaudubon.org/
Sea and Sage Monthly Bird Counts	Darrell Wilson conducts bird counts using a research permit on the Hellman Properties.	Bird counts from monthly surveys are summarized in reports submitted to LCW Ebird account and are provided in an attached summary report.



Land Management and
Stewardship Program Reports



Field Report Memorandum

To: Mark Stanley, LCWA

From: Marcelo Ceballos, Tidal Influence, LLC

Cc: Eric Zahn, Tidal Influence, Lenny Arkinstall, Salian Garcia

Date: May 9th, 2018

Subject: Land Management Field Report

Sites Inspected: Zedler Marsh, Bryant Lease West, Hellman/Gum Grove, State Lands Parcel, & OTD Parcel

Inspection Date: May 4th, 2018

Note: The locations of critical observations and issues noted in this document are called out on the map on the final page. Photos of certain issues/observations are attached at the end of the report.

All Locations: No trespassing signs have been posted along the entire LCWA complex.

OTD Parcel

1. Gates – OK
2. Trails –
 - a. A fallen tree and tree branch have been observed on site.
Tidal influence staff will work to remove this once nesting bird season has concluded in order to protect the site from fire danger in the future. (See Photos)
3. Fences – OK
4. Homeless –
 - a. A vacant homeless encampment was cleared during the month of March through a volunteer clean up event hosted by the LCWA's homeless contractor. Signs indicate this encampment may be forming again.
Tidal influence staff will continue to monitor this encampment location. (See Photos)
 - b. Attached is a map indicating the locations of the remaining trash pile locations on the OTD site.
We recommend the remaining trash be disposed of by the LCWA's homeless contractor and Tidal Influence staff over the coming months. (See photos)

Zedler Marsh

5. Gates – OK
6. Trails – OK
7. Fences – OK
8. Homeless – OK
9. Other – **Note:** We recommend updating the signage at the entrance gate to reduce the amount of unapproved visitors once the property has been acquired by the LCWA.

State Lands Parcel

- 10. Gates – OK
- 11. Trails – OK
- 12. Fences –
 - a. Non-native vegetation growing along the fence line was cleared by Tidal influence staff. This action will likely have to be repeated in the upcoming months due to additional nonnative vegetative growth.
Tidal Influence Staff will work to keep this fence line clear in the coming months.
- 13. Homeless – OK

Hellman

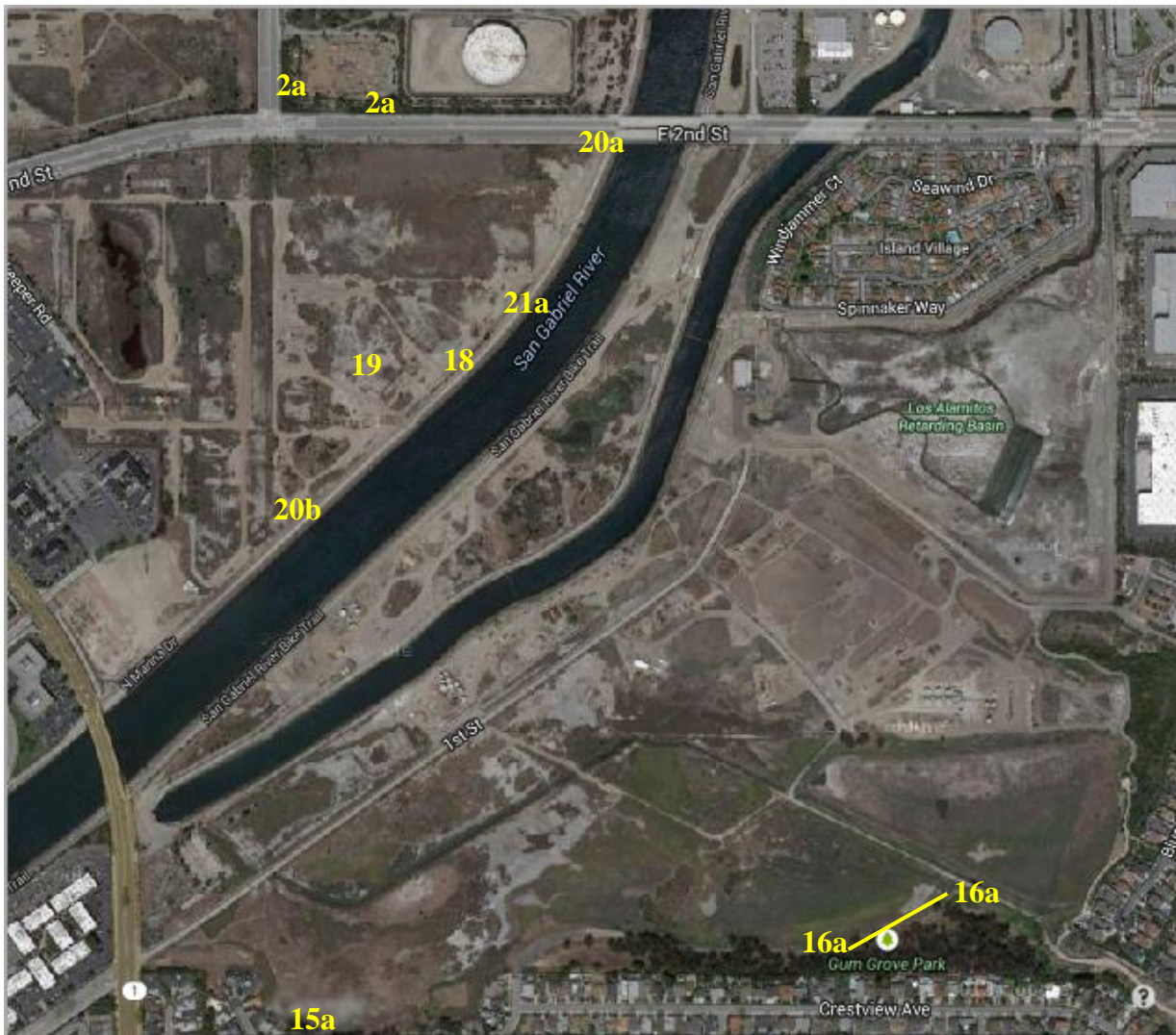
- 14. Gates – OK
- 15. Trails –
 - a. It was observed that a neighbor on Surf Place has cut down a tree that was on and into LCWA property.
Tidal Influence staff will work to repurpose this material once it has dried out and is easier to handle. (See Photos)
 - b. Nonnative vegetation maintenance occurred along land tour routes by Tidal Influence staff. All trail maintenance was evaluated and approved by a biologist and the LCWLT to insure this work would not interfere with any sensitive habitat areas. **Tidal Influence staff will monitor this trail in order to keep it clear for stewardship program events/tours in the future.**
- 16. Fences –
 - a. A number of fence breaches have been discovered all along the Gum Grove fence line. **Tidal Influence staff will coordinate repair of these sections to ensure site security.** (See Photos)
 - b. A dry brush clearance compliance inspection was conducted along the property line by Tidal Influence Staff and was determined to be in compliance with OC Fire Authority safety guidelines. (See Photos)
Tidal Influence staff will continually monitor vegetative growth to assess and maintain fire safety around the site.
- 17. Homeless – OK

Bryant Lease West

- 18. Gates – All the locks and chains for the gates along the levee have been removed and all gates are open.
We recommend LCWA staff meeting with LA County to determine a new approach to securing this property. We recommend that lock boxes be installed on the gates. (See Photos)
- 19. Trails –
 - a. Dry branches have been observed around the sites trails. These will need to be removed.
Tidal Influence staff will work to coordinate/plan a way to disperse and remove this material from the site over the coming months. (See Photos)
- 20. Fences –
 - a. The fence next to the 2nd Street access gate has been breached, making this gate ineffective. **We recommend LCWA staff meeting with LA County to determine a new approach to securing this property.** (See Photos)
 - b. Three fence breaches have been observed along the levy fence line with one being a part of a homeless encampment area. **Tidal Influence staff will coordinate to patch these breaches in the coming months.** (See Photos)
- 21. Homeless –
 - a. Encampment #1 appears to have returned and the individual has been observed walking through the site several times. A staircase and sitting area have been carved into the levy next to the encampment. Large amounts of tinder bundles have been collected and stored near the encampment as well. Tidal Influence staff has posted “No Trespassing” signage up in order to increase enforcement in this area. **We recommend the LCWA’s Homeless contractor work to clear this encampment in the coming months. (See Photos)**

Map

The photos of the issues and observations detailed above are labeled by number. The number on the map below indicates the location of these issues and observations.



OTD Parcel



Trash Pile Locations

 = Trash Area Cleared

 = New/Current Trash Pile

OTD Parcel



Remaining trash piles on OTD Site

OTD Parcel



Homeless encampment assessed to be vacant and the materials were cleaned up during the volunteer event hosted by the LCWA's homeless contractor. Since then additional materials have come on site and an encampment appears to be forming again.

OTD



The “No Trespassing” signs posted all around the LCWA complex

OTD Parcel



Branches hanging from tree



Fallen tree is drying up

Hellman



A neighbor has cut a tree from the back fence line on and into LCWA property

Hellman



Several points along Gum Grove Fence line are damaged/breached



Hellman



Dry Brush remains at an adequate distance from neighboring houses in accordance with the Orange County Fire Authority Guidelines. New growth has started.

Bryant Lease West



Gates still open during
November Patrol, with open
access to property



Fence line next to 2nd Street bridge breached

Bryant Lease West



Dry brush observed on Bryant Lease West site

Clearance effort will have to be
planned/coordinated

Bryant Lease West

Encampment #1



Encampment was cleared on December 19th, 2017. Inhabitant immediately returned and set up a new encampment.

Bryant Lease West

Encampment #1



Staircase & sitting area carved into levy, storage area under levy access way, piles of dry vegetation, and encampment inhabitant walking along levy during patrol

Bryant Lease West

Encampment #1



Fence breaches along
levy/Bryant lease fence line.

Nature Observations



Nature Observations





Field Report Memorandum

To: Mark Stanley, LCWA

From: Marcelo Ceballos, Tidal Influence, LLC

Cc: Eric Zahn, Tidal Influence, Lenny Arkinstall, Salian Garcia, Sally Gee

Date: June 12th, 2018

Subject: Land Management Field Report

Sites Inspected: Zedler Marsh, Bryant Lease West, Hellman/Gum Grove, State Lands Parcel, & OTD Parcel

Inspection Date: June 1st, 2018

Note: The locations of critical observations and issues noted in this document are called out on the map on the final page. Photos of certain issues/observations are attached at the end of the report.

OTD Parcel

1. Gates – OK
2. Trails – OK
3. Fences – OK
4. Homeless –
 - a. A homeless day camp was observed on site.
Tidal influence staff will continue to monitor this encampment location. The LCWA's Homeless contractor will also post No Trespassing signs along the perimeter of the site to support site safety and enforcement. (See Photos)
 - b. Attached is a map indicating the locations of the remaining trash pile locations on the OTD site.
We recommend the remaining trash be disposed of by the LCWA's homeless contractor and Tidal Influence staff over the coming months. (See photos)

Zedler Marsh

5. Gates – OK
6. Trails – OK
7. Fences – OK
8. Homeless – OK
9. Other – Note: We recommend updating the signage at the entrance gate to reduce the amount of unapproved visitors once the property has been acquired by the LCWA.

State Lands Parcel

10. Gates – OK
11. Trails – OK
12. Fences –
 - a. Tidal Influence staff conducted fence line maintenance this month.
Tidal Influence Staff will work to maintain this fence line in the coming months.
13. Homeless – OK

Hellman

14. Gates – OK

15. Trails –

- a. It was observed that a neighbor on Surf Place has cut down a tree that was on and into LCWA property. **Tidal Influence staff will work to repurpose this material once it has dried out and is easier to handle. (See Photos)**
- b. Trail maintenance will occur this month along stewardship program trails. **Tidal Influence staff will conduct regular trail maintenance to ensure stewardship program safety.**

16. Fences –

- a. Tidal Influence staff conducted maintenance around the stewardship meeting area this month. **Tidal Influence staff will continue to monitor and maintain this area for future stewardship programs.**
- b. A number of fence breaches have been discovered all along the Gum Grove fence line. **Tidal Influence staff will coordinate repair of these sections to ensure site security.** (See Photos)
- c. A dry brush clearance compliance inspection was conducted along the property line by Tidal Influence staff and was determined to be in compliance with OC Fire Authority safety guidelines. (See Photos)
Tidal Influence staff will continually monitor vegetative growth to assess and maintain fire safety around the site.

17. Homeless – OK

Bryant Lease West

18. Gates – All the locks and chains for the gates along the levee have been removed and all gates are open.

We recommend LCWA staff meeting with LA County to determine a new approach to securing this property. We recommend that lock boxes be installed on the gates. (See Photos)

19. Trails –

- a. Dry branches have been observed around the sites trails. These will need to be removed. **Tidal Influence staff will work to coordinate/plan a way to disperse and remove this material from the site over the coming months. (See Photos)**

20. Fences –

- a. The fence next to the 2nd Street access gate has been breached, making this gate ineffective. **We recommend LCWA staff meeting with LA County to determine a new approach to securing this property.** (See Photos)
- b. Two fence breaches have been observed along the levy fence line with one being directly a part of a homeless encampment area. On **Tidal Influence staff will coordinate to patch these breaches in the coming months.** (See Photos)

21. Homeless –

- a. Encampment #1 appears to have returned and the individual has been observed walking through the site several times. A staircase and sitting area have been carved into the levy next to the encampment. Large amounts of tinder bundles have been collected and stored near the encampment as well. Tidal Influence staff has posted “No Trespassing” signage up in order to increase enforcement in this area, but all signs have been taken down and moved onto another fence line, likely by the encampment inhabitant. Tidal influence staff will work to collect and repost these signs using a more secure method of attachment. **We recommend the LCWA’s Homeless contractor work to clear this encampment in the coming months. Tidal Influence will work to recover and repost this section of the complex with no trespassing signs. (See Photos)**

Map

The photos of the issues and observations detailed above are labeled by number. The number on the map below indicates the location of these issues and observations.



OTD Parcel



Trash Pile Locations



= Trash Area Cleared



= New/Current Trash Pile

OTD Parcel



Remaining trash piles on the OTD Parcel

OTD Parcel



A day camp has been observed on site with trash and debris gathered around it.

Hellman



A neighbor has cut a tree from the back fence line on and into LCWA property

Hellman



Parking area maintenance was conducted this month to support the stewardship programs.

Trail maintenance will be conducted along stewardship program routes

Hellman



Several points along Gum Grove fence line are damaged/breached



Hellman



Dry Brush remains at an adequate distance from neighboring houses in accordance with the Orange County Fire Authority Guidelines. Maintenance will occur in the coming months.

Bryant Lease West



Gates still open during
November Patrol, with open
access to property



Fence line next to 2nd Street bridge breached

Bryant Lease West



Dry brush observed on Bryant Lease West site

Clearance effort will have to be
planned/coordinated

Bryant Lease West

Encampment #1



Encampment was cleared on December 19th, 2017. Inhabitant immediately returned and set up a new encampment.

Bryant Lease West

Encampment #1



Staircase & sitting area carved into levy, storage area under levy access way, piles of dry vegetation, and encampment inhabitant walking along levy during patrol

Bryant Lease West

Encampment #1



Fence breaches near the encampment. No trespassing signs missing from previously posted areas. Signs moved to fence line on PCH.

Nature Observations



Nature Observations





Field Report Memorandum

To: Mark Stanley, LCWA

From: Marcelo Ceballos, Tidal Influence, LLC

Cc: Eric Zahn, Tidal Influence, Lenny Arkinstall, Salian Garcia, Sally Gee

Date: July 16th, 2018

Subject: Land Management Field Report

Sites Inspected: Zedler Marsh, Bryant Lease West, Hellman/Gum Grove, State Lands Parcel, & OTD Parcel

Inspection Date: June 29th, 2018

Note: The locations of critical observations and issues noted in this document are called out on the map on the final page. Photos of certain issues/observations are attached at the end of the report.

OTD Parcel

1. Gates – OK
2. Trails – OK
3. Fences –
 - a. A fence breach was found during the last patrol and has since been patched by Tidal Influence Staff. (See Photos)
 - b. The LCWA's homeless contractor posted No Trespassing signs along the Southern portion of the OTD Parcel perimeter. (See photos)
4. Homeless –
 - a. Since the patrol a homeless person was reported to be disturbing workers on site.
We recommend working with the LCWA's homeless contractor to conduct outreach and work with police to ensure the safety of workers on site.
 - b. A homeless day camp was observed on site but appeared vacant during the last patrol.
Tidal influence staff will continue to monitor this encampment location. (See Photos)
 - c. Attached is a map indicating the locations of the remaining trash pile locations on the OTD site.
We recommend the remaining trash be disposed of by the LCWA's homeless contractor and Tidal Influence staff over the coming months. (See photos)

Zedler Marsh

5. Gates – OK
6. Trails – OK
7. Fences – OK
8. Homeless – OK
9. Other – Note: We recommend updating the signage at the entrance gate to reduce the amount of unapproved visitors once the property has been acquired by the LCWA.

State Lands Parcel

10. Gates – OK
11. Trails – OK
12. Fences – OK
13. Homeless – OK

Hellman

- 14. Gates – OK
- 15. Trails –
 - a. It was observed that a neighbor on Surf Place has cut down a tree that was on and into LCWA property. **Tidal Influence staff will work to repurpose this material once it has dried out and is easier to handle.**
- 16. Fences –
 - a. A number of fence breaches have been discovered all along the Gum Grove fence line. **Tidal Influence staff will coordinate repair of these sections to ensure site security.**(See Photos)
 - b. A dry brush clearance compliance inspection was conducted along the property line by Tidal Influence staff and was determined to be in compliance with OC Fire Authority safety guidelines. (See Photos)
Tidal Influence staff will continually monitor vegetative growth to assess and maintain fire safety around the site.
- 17. Homeless – OK

Bryant Lease West

- 18. Gates –
 - a. All the locks and chains for the gates along the levee have been removed and all gates are open. **We recommend LCWA staff meeting with LA County to determine a new approach to securing this property. We recommend that lock boxes be installed on the gates.** (See Photos)
- 19. Trails –
 - a. Dry branches have been observed around the sites trails. These will need to be removed. **Tidal Influence staff will work to coordinate/plan a way to disperse and remove this material from the site over the coming months. (See Photos)**
- 20. Fences –
 - a. The fence next to the 2nd Street access gate has been breached, making this gate ineffective. **We recommend LCWA staff meeting with LA County to determine a new approach to securing this property.** (See Photos)
 - b. Two fence breaches have been observed along the levy fence line with one being directly a part of a homeless encampment area. On **Tidal Influence staff will coordinate to patch these breaches in the coming months.** (See Photos)
- 21. Homeless –
 - a. Encampment #1 appears to have returned and the individual has been observed walking through the site several times. A staircase and sitting area have been carved into the levy next to the encampment. Large amounts of tinder bundles have been collected and stored near the encampment as well. Tidal Influence staff has posted “No Trespassing” signage up in order to increase enforcement in this area, but all signs have been taken down and moved onto another fence line, likely by the encampment inhabitant. Tidal influence staff will work to collect and repost these signs using a more secure method of attachment. **We recommend the LCWA’s Homeless contractor work to clear this encampment in the coming months. Tidal Influence will work to recover and repost this section of the complex with no trespassing signs. (See Photos)**

Map

The photos of the issues and observations detailed above are labeled by number. The number on the map below indicates the location of these issues and observations.



OTD Parcel



Trash Pile Locations



= Trash Area Cleared



= New/Current Trash Pile

OTD Parcel



Fence breach near OTD Parcel entrance, has since been patched

OTD Parcel



OTD Parcel



The day camp on site appears to be vacant, No Trespassing signs were posted along the perimeter of the property

Hellman



Several points along Gum Grove fence line are damaged/breached



Hellman



Dry Brush remains at an adequate distance from neighboring houses in accordance with the Orange County Fire Authority Guidelines. Maintenance will occur in the coming months.

Bryant Lease West



Gates still open during
November Patrol, with open
access to property



Fence line next to 2nd Street bridge breached

Bryant Lease West



Dry brush observed on Bryant Lease West site

Clearance effort will have to be
planned/coordinated

Bryant Lease West

Encampment #1



Encampment was cleared on December 19th, 2017. Inhabitant immediately returned and set up a new encampment.

Bryant Lease West

Encampment #1



Staircase & sitting area carved into levy, storage area under levy access way, piles of dry vegetation, and encampment inhabitant walking along levy during patrol

Bryant Lease West

Encampment #1



Fence breaches near the encampment. No trespassing signs missing from previously posted areas. Signs moved to fence line on PCH.

Nature Observations



Nature Observations



LOS CERRITOS WETLANDS STEWARDSHIP PROGRAM SUMMARY

REPORT APRIL 12TH, 2018 – JULY 23RD, 2018

Los Cerritos Wetlands Authority

Nature Walks

Turtle Trek, Raptor Ramble, Heron Hike

Since May, nature walks sponsored by the Los Cerritos Wetlands Land Trust have hosted over 50 community members (Figure 1). Folks attending these nature walks not only learn the importance of coastal wetlands but are given the unique opportunity to walk among the diversity of life forms that are dependent on the health of these habitats; including endangered species like the green sea turtle. The Turtle Trek, Raptor Ramble, and Heron Hike provide a natural setting in which the community is given the opportunity to foster their valuation of Los Cerritos Wetlands. Each walk begins at the north side of 1st Street and Pacific Coast Highway in Seal Beach at 8:00am on the first Saturday of every month. Members of the public are encouraged to attend all three different tours into the wetlands. For more information and to RSVP for land tours/nature walks, please contact Elizabeth Lambe at ejlambe@verizon.net.

Habitat Restoration Events

Volunteer restoration event turnouts have consistently grown throughout 2018 with the month of June hosting a record-breaking **110** event volunteers (Figure 2). With this much support from the community, the Stewardship Program was able to accomplish the removal of 830 lbs. of nonnative vegetation from around the Zedler Marsh restoration area. Combined with the work of the college intern team, an impressive sum of **2028 lbs.** have been removed since April. 167 additional native plants were installed before the end of last planting season and subsequent care has ensured their survival through the warmer months. With the help of volunteers and interns, nearly 650 new plants have been propagated in the onsite growing space in preparation for the next coming planting season.

Restoration Events & Intern Crew Days between Mid-April and Mid-July produced 697 volunteer hours, contributing \$16,825 in in-kind services. Restoration events follow immediately after Land Tours on the first Saturday of every month starting right at 10:30am, please contact iwanttohelp@tidalinfluence.com for more information.

Special Events

The Stewardship Program continued to maintain its relationship with local universities having hosted 5 different service-learning field trips since April (Figure 3). 125 students and instructors helped to remove 435 lbs. of nonnative vegetation in addition to successfully propagating 691 new native plants. As well as service-learning field trips, the Stewardship Program has coordinated two educational programs for youth groups throughout the Long Beach area (Figures 4 & 5). Both the Explore the Coast Program and the BeSAFE Program bring buses of young adventurers into Los Cerritos Wetlands for hands-on environmental education. The BeSAFE Program buses in children from different parks within Long Beach and will continue through the end of August while the Explore the Coast Program brings students directly from school and will be completed by the end of the year. With the help of funding secured through the RMC, 11 addition BeSAFE field trips have been scheduled for groups like the Boys & Girls Club of Long Beach and the YMCA. These trips escort students through both the Hellman Ranch property and among the Zedler Marsh trail system for some of their first experiences with wetland ecosystems. Upon the completion of these programs, hundreds of children will have each had an enriching experience in their local wetland.



FIGURE 1. HERON HIKE (TOP), TURTLE TREK (MIDDLE), RAPTOR RAMBLE (BOTTOM)



FIGURE 2. RESTORATION EVENTS BETWEEN MAY AND JULY



FIGURE 3. SERVICE-LEARNING FIELD TRIPS



FIGURE 4. EXPLORE THE COAST PROGRAM



FIGURE 5. BESAFE PROGRAM

El Dorado Audubon Society
Los Cerritos Wetlands Authority Nature/Bird Walks
Report for August 2, 2018

El Dorado Audubon has been leading nature/bird walks for the Los Cerritos Wetlands Authority since 2009. As a local chapter of the National Audubon Society, El Dorado Audubon's mission is conservation of native birds and their habitats and education of members and the community.

Los Cerritos Wetlands is an Audubon Important Bird Area. Our walks encompass the importance of wetlands and Los Cerritos in particular. We recognize the connectivity of the wetlands with the San Gabriel River, Seal Beach National Wildlife Refuge, El Dorado Nature Center and other Orange Coast Wetlands. We continue to draw community members from throughout Southern California and visitors from Minnesota, Nevada, Oregon, Texas, and Wisconsin.

Guest speakers on our walks covered a variety of topics: Bays and Estuaries of Southern California, Birds of the Pacific Flyway, sea turtles, butterflies, native and non-native wildflowers.

Los Cerritos Wetlands, Hellman lowlands

January -- American Wigeon, White-faced Ibis, Least Sandpiper, Killdeer, and Northern Harrier with clear skies and warm weather for a total of 27 avian species.

February – Northern Shoveler, American Wigeon, Northern Pintail, Green-winged Teal, Northern Harrier, American Avocet, Black-bellied Plover and Least Sandpiper, Western Meadowlark, Red-winged Blackbird for a total of 36 avian species

March – Say's Pheobe, Osprey, raptors, herons, egrets for a total of 37 avian species

April – It was a warm, dry day; many seasonal ponds/wetlands are dried up. Rough-winged Swallow, Barn Swallow, Hooded Oriole for a total of 24 avian species.

May – It was a warm day; seasonal ponds/wetlands are dried up. Highlights included several species of swallows – Northern Rough-winged, Barn Swallow and Cliff Swallow, American Kestrel (pair), Belding's Savannah Sparrow and Lesser Goldfinch for the total of 30 avian species.

June – Observers noted cloudy to clear sky. The earth is extremely dry, area to the west of the road has very little tidal influence. Highlights included a Cattle Egret (immature), Cassin's Kingbird and hummingbirds for a total of 17 species.

July -- We noted water in the wetlands to the west of the asphalt road due to recent high tides. In May and June this area was dry. Highlights included Red-shouldered Hawk, Ash-throated Flycatcher and Hooded Oriole for a total of 21 species.

Los Cerritos Wetlands Hellman property, Orange, California, US

May 12, 2018 8:00 AM - 10:00 AM

30 species (+2 other taxa)

Mallard 5
duck sp. 10
Double-crested Cormorant 7
Great Blue Heron 2
Great Egret 2
Snowy Egret 3
Cooper's Hawk 1
Red-tailed Hawk 2
Killdeer 3
Greater Yellowlegs 1
gull sp. 15
Forster's Tern 4
Rock Pigeon (Feral Pigeon) 5
Mourning Dove 37
Allen's Hummingbird 5
American Kestrel 2
Black Phoebe 3
Say's Phoebe 2
Cassin's Kingbird 4
American Crow 12
Northern Rough-winged Swallow 15
Barn Swallow 7

Cliff Swallow 3
House Wren 3
Common Yellowthroat 5
Savannah Sparrow (Belding's) 4
Song Sparrow 4
Hooded Oriole 3
Red-winged Blackbird 5
House Finch 45
Lesser Goldfinch 7
House Sparrow 2

Los Cerritos Wetlands Hellman property, Orange, California, US
Jun 9, 2018 8:00 AM - 10:00 AM
17 species (+5 other taxa)

Mallard 2
Great Egret 1
Cattle Egret 1
Red-tailed Hawk 1
Mourning Dove 12
Allen's Hummingbird 1
hummingbird sp. 4
American Kestrel 1
Black Phoebe 2
Cassin's Kingbird 1
American Crow 2
swallow sp. 25
Bushtit 2
wren sp. 1
Northern Mockingbird 1
European Starling 1
Common Yellowthroat 2

Los Cerritos Wetlands Hellman property, Orange, California, US
Jul 14, 2018 8:00 AM - 10:00 AM
21 species

Double-crested Cormorant 2
Snowy Egret 1
Cattle Egret 1

Northern Harrier 2
Red-shouldered Hawk 1
Red-tailed Hawk 2
gull sp. 5
Mourning Dove 8
Allen's Hummingbird 2
Ash-throated Flycatcher 2
Cassin's Kingbird 2
American Crow 3
Northern Rough-winged Swallow 5
Barn Swallow 3
swallow sp. 15
House Wren 2
Northern Mockingbird 3
Common Yellowthroat 3
Song Sparrow 1
Hooded Oriole 2
House Finch 25
Lesser Goldfinch 2
Acanthis/Spinus sp. 5
House Sparrow 3



Allen's Hummingbird



Egret eating



Forster's Tern



Northern Rough-winged Swallow

Los Cerritos Wetlands Authority

Date: August 2, 2018
To: Governing Board Members
From: Salian Garcia, Fiscal Manager
Subject: Item 7f: Receive and File Expenditure Report

Attached as Exhibit A is the FY 2017/2018 Budget with balances as of July 15, 2018. Key elements of the Expenditure Report are summarized below:

REVENUES

- JPA Contribution Revenue remains at 50% of budgeted revenues. The Authority is awaiting contributions from the Coastal Conservancy and the City of Seal Beach.
- Lease Revenue is below budget projections as the Authority is awaiting lease payments from its OTD parcel commercial tenant.
- Fees and Mitigation Revenue are above normal budget projections, primarily due to the reimbursement of expenditures near the end of Year 1 of the Tarplant Mitigation Project.
- Staff is awaiting reimbursement from several grants; thus, revenue from Grant and Special Projects has been minimal. The revenue will be reflected when submitted costs expended under the grant has been approved for reimbursement and the reimbursement is received.

EXPENSES

- Insurance – General Liability/Umbrella is above normal budget projections; however, expenditures reflect current policies and the Authority do not expect any additional expenses.
- Signage Expense line item is at 94% of budget. Expenditure includes 55 “No Trespassing” signs around the LCWA property
- Mitigation Projects, specifically the Ascon Tarplant Mitigation Project, is above normal budget projections; however, expenditures are offset by reimbursement from Project Navigator.

LOS CERRITOS WETLANDS AUTHORITY
CONSOLIDATED BUDGET FISCAL YEAR 2017 - 2018

	FY 17/18 Budget	Actual as of 07/15/18	Remaining Budget Balance	Actuals % of FY2018 Budget
Revenues				
General Administrative & Operating Revenue				
JPA Contributions	20,000	10,000	-	50%
Lease Revenue	68,120	45,900	12,340	67%
Contracts	34,330	-	24,330	0%
Fees	2,320	9,747	(8,541)	420%
Permits	10,000	10,000	-	100%
Carryover from FY2017	-	-	-	0%
Subtotal-General Administrative & Operating	134,770	75,647	28,129	56%
Grants and Special Projects Revenue				
Grant - State Coastal Conservancy	204,453	38,328	12,117	19%
Grant - LA Regional Parks & Open Space District	-	-	-	0%
Grant - Rivers & Mountains Conservancy	1,260,000	50,623	1,081,208	4%
Grant - Other Federal, State, County & Local Funds	38,000	-	-	0%
Mitigation Revenue	46,394	56,881	(32,764)	123%
Contracts - Other MOA	12,000	-	-	0%
Other - Donations	-	-	-	0%
Other - Miscellaneous	-	-	-	0%
Subtotal-Grants and Special Projects	1,560,847	145,832	1,060,561	9%
Total Revenue	1,695,617	221,479	1,088,690	13%
Expenses				
Insurance - D & O Policy	4,038	3,046	992	75%
Audit Services	6,500	4,136	2,364	64%
Website	2,000	40	1,960	2%
Miscellaneous Administrative Costs	5,000	-	5,000	0%
Miscellaneous PM/Accounting Costs	7,300	525	6,775	7%
Administration Expense Subtotal	24,838	7,748	17,090	31%
Grant & Land Management - General	35,000	26,600	-	76%
Grant Management - Contracted Services	34,330	21,339	1,491	62%
Insurance - General Liability/Umbrella	10,432	9,742	690	93%
Los Cerritos Wetlands Stewardship Program	15,500	-	15,500	0%
Security	5,000	2,900	(3,700)	58%
Signage	3,000	2,817	183	94%
OTD Security Deposits	-	-	-	-
MOAs	12,000	7,663	-	64%
Miscellaneous	7,000	265	6,735	4%
Operational Expense Subtotal	122,262	71,326	24,120	58%
Consultant Services	20,670	2,975	15,195	14%
Grant - State Coastal Conservancy	135,000	62,916	49,807	47%
Grant - LA Regional Parks & Open Space District	-	-	-	-
Grant - Rivers & Mountains Conservancy	1,308,453	57,927	1,122,357	4%
Grant - Other Federal, State, County & Local Projects	38,000	7,782	0	20%
Other - Mitigation Projects	46,394	66,228	(93,842)	143%
Other - Miscellaneous	-	-	-	-
Capital Outlay Expense Subtotal	1,548,517	197,828	1,093,517	13%
Total Expense	1,695,617	276,901	1,134,728	16%
Ending Net Position	-	(55,422)	(46,038)	