

Los Cerritos Wetlands Authority

Date: February 3, 2017

To: Governing Board Members

From: Mark Stanley, Executive Officer

Subject: Item 9: Consideration of resolution to authorize an on-call consultant contract services for review of specialized environmental reports

RECOMMENDATION: That the Los Cerritos Wetlands Authority authorize an on-call consultant contract services for review of specialized environmental reports

BACKGROUND: The Los Cerritos Wetlands Authority (LCWA) requested proposals from qualified firms to provide as-needed a multidisciplinary team of professional consultants to review specialized environmental reports. The LCWA anticipates that the project team will include specialists in wildlife biology, wetland and restoration ecology, civil engineering, hydrology and geomorphology, landscape architecture and other appropriate disciplines. Staff received proposals from ECORP (Subconsultants include Withers & Sandgren, TerraCosta Consulting Group, Group Delta Consultants, Inc, and Avance Public Outreach & Communications) and Moffatt & Nichol (Subconsultants include New West Land, Kinnetic Labs, GeoSyntec, Everest International Consultants, Inc, Adventures in Living, Dulin & Boynton, Chambers Group, and Coastal Restoration Consultants), Staff recommends authorizing an on-call consultant contract with these consultants for review of specialized environmental reports as-needed, please see Exhibit A for proposals. In addition, after reviewing proposals, both consultant teams have an excellent understanding of the project components and issue areas; demonstrate competence, including the role and success of the firm/team and its individual members with similar projects in Southern California; the team's expertise ability to clearly and concisely communicate in written and graphic materials; and the teams technical staff and key personnel have the education and experience of particularly local experience. Further, both consultant firms have the longevity and stability and their team's readiness and ability to complete the project in a timely manner within cost and budget; and the responsiveness of the proposal to RFP requirements.

The on-call consultant contract will allow Staff to submit work requests as-needed to either Consultant Team, once cost proposals are received, Staff will then authorize work to the Consultant Team that can complete the work request that best fits the tasklist and timeline. The on-call consultant will receive work as-needed and as directed by Staff to review technical reports to achieve the LCWA's goal of an overall comprehensive program of acquisition, protection, conservation, restoration, maintenance and operation and environmental enhancement consistent with the goals of flood protection, habitat protection and restoration, and improved water supply, water quality and groundwater recharge. The Consultant Team must have the technical expertise in-house or through their subconsultant to comprehensively review technical reports as outlined below and provide a complete evaluation and assessment of all deficiencies, inaccuracies and ensure the conclusions of these technical reports are feasible and defensible. The on-call consultant contract will not exceed \$50,000 for a term of 12-months.

On-Call Consultant Contractor Tasks:

1.0 Review of the California Environmental Quality Act and the National Environmental Policy Act:

The LCWA initiated the Conceptual Restoration Plan (CRP) in June 2011 and completed in August 2015 and represents the first comprehensive planning effort for the LCW Complex. The CRP lays out the site history and conditions, describes alternatives for restoration, and presents results of detailed analyses and although these alternatives were analyzed, no preferred alternative was considered. Therefore, all of the alternatives or a hybrid of the alternatives will be analyzed through the environmental review process to determine which will best achieve the goals and objectives of the project while creating the least environmental impacts. In addition, the LCWA has various stakeholders including the City of Long Beach and Los Cerritos Wetlands LLC which have an interest in Los Cerritos Wetlands Complex and are also preparing their specific environmental documents for their specific proposed projects and thus the consultant will be requested to professionally critic and recommend revisions to these environmental documents to ensure findings and conclusions are feasible and defensible. The consultant must be knowledgeable and have extensive experience in developing, writing, reviewing and securing final certification of Environmental Impact Reports. The consultant must understand and provide critical analysis of all technical reports per the environmental review process and as required for this project to satisfy CEQA and NEPA. Due to the sensitivity of the existing site, the potential for contaminants to be present and potential controversy from multiple stakeholder groups, an Environmental Impact Report (EIR) and Environmental Impact Statement (EIS) will be analyzed.

2.0 Existing Sensitive Habitats and Endangered Species: Sensitive habitats within the project area include coastal salt marsh, freshwater marsh, and seasonal wetland ponds. Belding's savannah sparrow and the California least tern have been observed nesting in the project area. Several other listed species are known to use the area. The Consultant must be able to analyze habitat development goals of the project, must understand potential direct and indirect impacts to existing habitats and the protected species that they support must be evaluated. Characterize biological resources and extent of special status species. The Consultant must have the technical experts for the comprehensive and professionally critic and recommend revisions to habitat assessments, including: critical habitat determinations, sensitive species considerations, and evaluation of existing habitat and land management practices.

3.0 Hydrology and Hydraulics: Restoration and enhancement of hydrologic conditions within the Los Cerritos Wetlands is a priority for wetland restoration in the area. Restoration of hydrologic functioning will be complicated by many factors including: channelization of the San Gabriel River (SGR), water intake from two area power plants and impacts on tidal circulation and entrainment of larval biota, thermal plumes in the SGR from power plant discharges, flood management concerns, and existing roads and infrastructure. The Consultant shall become familiar with all watershed improvement projects in the area adjacent to the Los Cerritos Wetlands, including those identified along the San Gabriel River, and analyze the impacts of that infrastructure and the watershed to the Wetlands. The Consultant must have the technical expertise to professionally critic and recommend revisions to engineering and economic feasibility reports for various hydrologic regimes which will be a major factor in identifying potential restoration alternatives.

4.0 Sediment Characterization: For certain sections of the property, sediment analysis and disposal will be key components of the planning process and may be critical to containing planning costs. For those areas, a testing plan has been developed and designed so as to inform the selection of alternatives and assessment of beneficial use and disposal options,

including beach nourishment, while reserving a more thorough level of substrate characterization for the preferred alternative. The Consultant must have the technical experts for the comprehensive and professionally critic and recommend revisions to review sediment characterization.

5.0 Sea level rise: The Consultant must have the technical experts for the comprehensive and professionally critic and recommend revisions for the analysis of sea level rise and other projected impacts from climate change assessed and included in the feasibility and design study.

6.0 Archeology and Historical Review: The Consultant must have the technical experts for the comprehensive and professionally review and recommend revisions to the presence of prehistoric people in the project vicinity as documented. The planning process shall incorporate an approach for assessing potentially-significant archeological sites at key stages of project development.

7.0 Appraisal and Land Acquisition Review: The Consultant must have the technical experts to review comprehensively and recommend revisions for all completed Appraisal Reports as completed in accordance with the Uniform Standards of Professional Appraisal Practice and the Appraisal Institute's Supplemental Standards of Professional Appraisal Practice and Code of Professional Ethics.

8.0 Legal, political, and social factors: The Consultant must have the technical experts for the comprehensive review and evaluate legislation, regulatory mandates, permitting requirements, site-specific land use restrictions or other special factors that may constrain or enhance restoration opportunities.

9.0 Public access and interpretation and Community Outreach: The Consultant must have the technical experts for the comprehensive and professionally critic and recommend revisions to the public access plan. The public access analysis will include a study of the feasibility of connecting the San Gabriel River Bike Trail with the Los Cerritos Wetlands in a manner compatible with habitat conservation and restoration, including the possibility of connections to or through the LCWA properties along the eastern bank of the San Gabriel River under Studebaker/Westminster Road. The analysis will identify the practicality and potential options to extend the existing bike path onto the Los Cerritos Wetlands at different locations and to connect the Los Cerritos Wetlands with the regional bike path network. In addition, there is a great deal of community interest in the future of the Los Cerritos Wetlands. The planning will include ample opportunities for public input from the beginning of the process. The scope of work for the Consultant shall include critically analyzing recommendations presented for developing a community planning process that will engage the surrounding communities in a visioning process for the Wetlands that could guide the development of the site program and the ultimate restoration and management plan for the Wetlands.

10.0 Review of Restoration Alternatives: The planning process will identify restoration alternatives based on the opportunities and constraints. Restoration alternatives will identify discrete projects that can be implemented as stand-alone efforts, so that restoration can begin even if some desired restoration properties have not yet been acquired. The Consultant must have the technical experts for the comprehensive and professionally critic and recommend revisions for each alternative, the analysis shall include:

- **Description.** Analysis each alternative, including major infrastructure changes, hydrologic regime, mix of habitat types, environmental benefits and impacts, and resulting changes in habitat quantity and quality.
- **Preliminary Designs.** Determine if the conceptual grading plans, typical cross-sections, and habitat elevation bands are defensible and feasible.
- **Hydrodynamic modeling.** Hydrodynamic modeling will estimate the size of channels and culverts required to achieve the desired hydrologic conditions within the restored wetlands, determine if these analysis are feasible and defensible.
- **Maintenance.** Evaluate long-term maintenance needs. Maintenance items to be investigated include culvert sedimentation, channel sedimentation, water quality swale sedimentation, tide gate operation, and flood impact mitigation to restored habitat.
- **Public Access.** Public access plan will analysis how the public accesses and interprets concepts developed as part of the restoration alternatives.
- **Estimated costs.** Constructions Costs will include estimates for design, engineering, environmental review, acquisition of privately held land, permitting, construction, construction management and long-term management and monitoring. The consultant must evaluate and analysis these construction costs to determine if these analysis are feasible and defensible.

11.0 Review environmental studies to identify potential contaminant types and

sources: The Consultant must have the technical experts for the comprehensive and professionally critic and recommend revisions pertaining to Phase 1 and 2 environmental site assessments. Summarize key site contamination issues for restoration planning and develop a scope of work for additional reports.

12.0 Supplemental Consultant Services may be required at LCWA's discretion, upon prior written authorization by Executive Officer, and will be based on Consultant's fee schedule.

FISCAL: The LCWA Budget FY16/17 will be amended to reflect an on-call consultant contract not to exceed \$50,000 for a term of one-year. Funding for the on-call contracts is through the Los Cerritos LLC Memorandum of Option Agreement Funds which allowed expenditures for this type of consultant contract.

The services provided by this contract will be retained based on an Approved Hourly Rate Schedule for all consultants and subcontractors' fee schedule. This fee will include a total of hours for the Consultant's Principal Project Manager and other specialists for reviewing the technical reports and to complete any deliverables. If additional hours are required, the hours will be charged based on the Consultant's fee schedule. The consultant shall be compensated based on an as-needed services. Invoices shall be submitted consistent with the provisions of the work plan outlined and submitted quarterly if needed.

LEGISLATIVE AUTHORITY AND LCWA ADOPTED POLICIES/AUTHORITIES: Resolution 2015-19 approved on November 3, 2016 adopted an expenditure plan for the Los Cerritos LLC Memorandum of Option Agreement Funds which allowed expenditures for this type of consultant contract.

Exhibit A:
ECORP Consulting, Inc.
and
Moffatt & Nichol
Proposals

Item 9: On-Call Consultant Contract Services

SECTION 1 – COVER LETTER

January 27, 2017

Luz Quinnell
Los Cerritos Wetlands Authority
100 North Old San Gabriel
Azusa, CA 91702

Subject: Request for Proposals for On-Call Consultant Services for Technical Review of
Specialized Environmental Reports

Dear Ms. Quinnell:

Los Cerritos Wetlands Authority (LCWA) seeks an on-call consultant to review technical reports and provide oversight for various activities associated with the Los Cerritos Wetlands Complex restoration, in a manner consistent with the overarching project goals. Moffatt & Nichol (M&N) prepared the Los Cerritos Wetlands Conceptual Restoration Plan (CRP) and is presently the consultant to the LCWA for soils analyses as part of that effort. As such, our knowledge of the project uniquely positions us to best serve LCWA for this on-call contract. Through our current work on the CRP, we are intimately familiar with the nuances of the project. Benefits from choosing our team include:

- **Synergy with LCWA.** The M&N team has worked with LCWA since 2011. Having worked on-site with the LCWA, we know the local environment, issues, stakeholders, and project complexities.
- **Team Consistency.** The team we present within this proposal has been successfully collaborating with LCWA on the CRP since 2011. This trusted working relationship can continue to move this project forward into the future.
- **Technical Competence.** The team possesses all expertise required in the Request for Proposal (RFP), with particular site-specific experience at Los Cerritos that further strengthens the level of benefit to be derived by the LCWA.
- **Lessons-learned in the design of large-scale restoration projects.** Our staff have designed multiple large wetland restoration projects in southern California. Our experience in processing of similar projects will prove invaluable in reviewing specialized reports.

We provide a team with a tireless work ethic that has worked seamlessly with the LCWA, and we look forward to continuing our working relationship. Please contact me at (562) 426-9551 with any questions or comments on this proposal.

Sincerely,

Sincerely,

MOFFATT & NICHOL

A handwritten signature in blue ink, appearing to read 'Chris Webb'.

Chris Webb
Project Manager

SECTION 2 — STATEMENT OF QUALIFICATIONS AND EXPERIENCE



Moffatt & Nichol (M&N) is a full-service consulting engineering firm that employs more than 650 people among 34 offices worldwide, including a strong water resources discipline focused on wetland restoration, watershed restoration, drainage and flood control.

We regularly provide planning, investigation, design, construction documents, and post-construction award services for wetland restoration. Our services involve studies that evaluate hydrology/hydraulics (H&H) erosion and sediment transport,

coastal and oceanographic conditions and water quality for all types of wetlands—services that we have performed for numerous clients.

M&N provides a full range of coastal engineering/water resources/hydrology/hydraulics analytical services. M&N numerical models enable analysis of parameters vital to understanding the behavior of coastal, watershed, riverine, and tidal environments. We routinely apply models to establish boundary conditions, characterize existing systems, and predict future parameters based on proposed system modifications. Hydrological models can simulate the surface runoff response of a river basin, and the hydrodynamic circulation models can calculate water surface elevations and velocities in a waterway system. Our capabilities also include sedimentation models which can simulate the sedimentation patterns and transport processes in a river and estuary and the convective diffusion programs model the spreading of physical properties impacting water quality (pollutants, salinity, heat, etc.).

Relevant projects have included ecosystem and watershed restoration, monitoring and modeling of water quality, hydrodynamic, and sedimentation processes in the coastal and estuarine environment. M&N owns and routinely applies widely accepted computer models of varying complexity to simulate watershed hydrology, river and estuarine hydrodynamics, pollutant and sediment transport, and coastal processes.

As our projects nearly all touch the coast, we are also leaders in Sea Level Rise (SLR) analyses and planning for climate change, and are called in by local governments to advise on potential adaptation strategies. We are particularly qualified to assess the vulnerability to SLR and to develop adaptation/mitigation strategies in a manner that is easily understood by planners, architects, and local communities.

M&N has more than 71 years of experience in coastal engineering projects and has completed feasibility and modeling studies, cost estimates, and preliminary and final designs for more than 3,000 waterfront projects worldwide. More than 85 percent of our business is from repeat clients and referrals from trusted clients that we consider invaluable partners in successful project completion.

As our projects nearly all touch the coast, we are also leaders in Sea Level Rise (SLR) analyses and planning for climate change, and are called in by local governments to advise on potential adaptation strategies. We are particularly qualified to assess the vulnerability to SLR and to develop adaptation/mitigation strategies in a manner that is easily understood by planners, architects, and local communities.

M&N has more than 71 years of experience in coastal engineering projects and has completed feasibility and modeling studies, cost estimates, and preliminary and final designs for more than 3,000 waterfront projects worldwide. More than 85 percent of our business is from repeat clients and referrals from trusted clients that we consider invaluable partners in successful project completion.

SECTION 3 — STANDARD SERVICES | WORK PLAN | PROJECT SCHEDULE AND BUDGET | FEE SCHEDULE

Standard Services

The M&N project team provides the standard suite of services associated with wetland restoration projects. These services extend through the entire range of required actions of planning, analyses, engineering, and construction management. As such, this team has performed the same services sought by the LCWA for this project on multiple previous projects of a similar nature. We offer experts that cover each task listed in the RFP, and provide multiple experts on certain tasks to be able to provide redundancy for certain services. Our work plan is provided below.

Work Plan

The proposed work plan consists of accomplishing all work identified in the RFP. Each task is described below.

1. Review of the California Environmental Quality Act (CEQA) and National Environmental Policy Act (NEPA) – At the request of the LCWA, the MN team will review CEQA and/or NEPA documents distributed to the public, and provide professional critiques and recommend revisions. The work will be completed to ensure that findings and conclusions of the documents are feasible and defensible. We will also analyze all supporting technical reports to the CEQA/NEPA documents. Our members have experience and knowledge in preparing, reviewing, and obtaining certification of CEQA documents, and will apply that expertise to this task.
2. Existing Sensitive Habitats and Endangered Species – Our team will analyze habitat establishment goals of proposed projects, and evaluate potential direct and indirect impacts of projects on habitat and protected species. Team members will characterize biological resources and special status species. We will review and professionally critique habitat assessments, including habitat determinations, special status species considerations, and evaluate existing habitat and land management practices.
3. Hydrology and Hydraulics – The M&N team will utilize our familiarity with this project and other improvement projects within the lower watershed to analyze the impacts of infrastructure and the watershed on the wetlands. Our staff will professionally critique and recommend revisions to engineering and economic feasibility reports for various hydrologic regimes of restoration alternatives.
4. Sediment Characterization – The M&N team will review any pertinent sediment characterization studies, and provide professional critiques and recommended revisions. We are familiar with existing data from exhaustive research associated with the CRP.
5. Sea Level Rise – Our team will review pertinent sea level rise studies for climate change impacts on the site. Our staff will professionally critique and recommend revisions to the studies as needed to render them most technically defensible.

6. Archaeology and Historical Review – Our team members will comprehensively review documentation of historical peoples at the site, and provide critiques and recommend revisions as needed. Team experts will assess key archaeological sites as the design proceeds.
7. Appraisal and Land Acquisition Review – The M&N team will review appraisals for land acquisition and recommend modifications to the documents if necessary. All work will be done consistent with professional practices and State and Federal laws.
8. Legal, Political, and Social Factors – The consulting team will evaluate documentation pertaining to legal, regulatory, permitting, and site-specific land use restrictions that may affect restoration, and advise the LCWA on potential constraints.
9. Public Access and Interpretation and Community Outreach – The M&N team will review the public access and interpretation plan for the wetlands, and participate in community outreach. We will provide comments and suggest modifications as appropriate. We will evaluate the practicality and potential options associated with extending existing bike paths of the San Gabriel River Bike Trail into Los Cerritos Wetlands. Also, our staff will critically analyze recommendations for developing a community planning process, and we will engage surrounding communities in a visioning process for the wetlands.
10. Review of Restoration Alternatives – The project team will review, critique and recommend modifications to the existing three alternatives in addition to No Project. Staff will evaluate the designs, the modeling, maintenance, access options, and costs. This may result in a fourth alternative that may be more suitable for each individual site than those that presently exist.
11. Conduct Initial Environmental Study to Identify Potential Contaminant Types and Sources – Our team will be able to critically review any analyses of Phase I and/or Phase II Site Assessments. Those reviews may result in critiques of the studies and recommended modifications, and identification of key contamination issues for restoration, with a scope for additional reports.
12. Supplemental Consulting Services – The team will provide supplemental consulting services as requested by the LCWA.

Project Schedule

This work will extend over a duration of 12 months. Individual task orders will be approved and work will be completed over shorter intervals within this overall time frame.

Budget

The budget for the work is a maximum of \$50,000 over the 12 month project duration. All work will be done within that budget, with individual assignments being within that total fee.

Fee Schedule

The M&N fee schedule is attached on the following page. It consists of an hourly rate schedule for each of our firm's staff categories. The fee schedules for all subconsultants can be provided upon request.



RATE SCHEDULE FOR PROFESSIONAL SERVICES

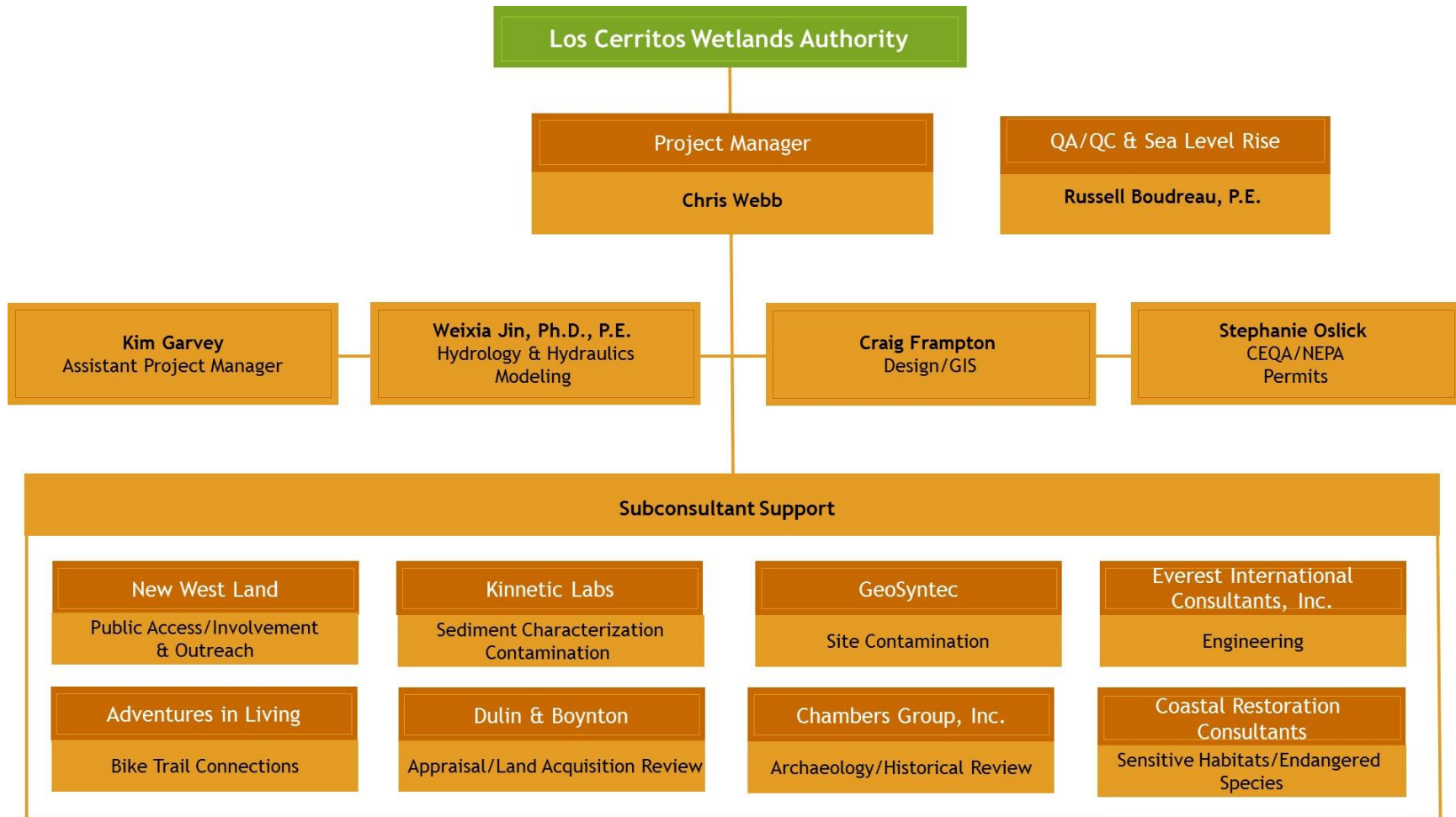
Effective September 1, 2016 Until Revised

	<u>CLASSIFICATION</u>	<u>HOURLY RATES</u>
PROFESSIONALS	Supervisory Engineer/Scientist	\$ 242.00
	Senior Engineer/Scientist	\$ 222.00
	Engineer/Scientist III	\$ 207.00
	Engineer/Scientist II	\$ 182.00
	Engineer/Scientist I	\$ 162.00
	Staff Engineer/Scientist	\$ 129.00
TECHNICIANS	Senior Technician	\$ 178.00
	Designer	\$ 167.00
	CADD II	\$ 141.00
	CADD I	\$ 105.00
CLERICAL	Word Processing	\$ 105.00
	General Clerical	\$ 82.00
SPECIAL	Principal Engineer/Scientist	\$ 266.00
	Deposition & Trial Testimony	\$ 350.00

REIMBURSABLE EXPENSES (Unless Otherwise Provided in Written Agreement)

Subcontracts or Outside Services		Cost +15%
Reproductions	-In House	
	Mylar Plots (B/W)	\$2.00/SF
	Color Plots	\$4.00/SF
	Vellum Plots (B/W)	\$1.00/SF
	Bond Plots (B/W)	\$0.50/SF
	Drawing Reproduction	Cost +15%
	Document Reproduction	\$0.10/sheet
	-Outside Reproduction	Cost +15%
Travel	Company Auto	Prevailing IRS
	Rental Vehicle	Cost
	Airfare	Cost
	Meals and Lodging	Cost

Organization Chart



Item 9: On-Call Consultant Contract Services

SECTION 1 – COVER LETTER

January 27, 2017
(P17-054)

Luz A. Quinnell
Los Cerritos Wetlands Authority
100 Old San Gabriel Canyon Road
Azusa, CA 91702
Via e-mail: luzquinnell@rmc.ca.gov

Subject: Proposal for On-Call Consultant Services for Technical Review of Specialized Environmental Reports

Dear Ms. Quinnell:

ECORP Consulting, Inc. (ECORP) is pleased to submit our proposal to the Los Cerritos Wetlands Authority (LCWA) to perform a peer review of an Environmental Impact Statement/Environmental Impact Report (EIS/EIR) and associated technical studies and planning documents for the environmental enhancement of the Los Cerritos Wetlands Complex Project. As a mid-sized environmental services firm, we specialize in helping our clients prepare the necessary documentation and follow the proper procedures to comply with the California Environmental Quality Act (CEQA), the National Environmental Policy Act (NEPA), and a wide range of other environmental regulations. Some key benefits to the LCWA in selecting ECORP are:

- ◆ Our **experience working with regulatory agencies** and our understanding of local issues will result in a streamlined and efficient review by professionals aware and up to date on regulatory issues and requirements.
- ◆ Our **experience performing peer reviews** on a number of CEQA/NEPA projects will provide a broad-based approach to considering all aspects and issues addressed in the documentation under review which will result in legally defensible documents.
- ◆ Our **project manager, Todd Chapman**, who is a Long Beach native and highly experienced with biological/aquatic resources, peer reviews, and project work in coastal environments, will provide expert review of the most salient suite of topics under review and assure technical accuracy of the reports.
- ◆ A team of **technical subject experts** who can address all of the resource area issues relevant to the Project will result in expert focus on this important aspect of the Project and further assure technical accuracy.

ECORP's central philosophy is that well-planned, cost-effective, cohesive teamwork with a personalized client-focused approach leads to successful project completion. Our primary expertise and core disciplines are in CEQA and NEPA documentation, regulatory permitting, biological

resources, cultural resources, water resources, mitigation planning, and geographic information system (GIS) services.

ECORP will be the lead reviewer for the CEQA/NEPA documents and the biological, restoration/wetlands, archaeological/historic, and water resources technical reports. We have included on our team four specialty subcontractors with whom we regularly work to assist us with review of the technical studies, planning documents, and additional specialty services:

- ◆ **Withers & Sandgren** will provide landscape architecture review.
- ◆ **TerraCosta Consulting Group, Inc.** will provide sediment characterization and sea level rise review.
- ◆ **Group Delta Consultants, Inc.** will provide hazardous materials (Phase I and II) peer reviews and any required geotechnical or hydrology/water quality review.
- ◆ **Avance Public Outreach & Communications** will provide review of the community planning process.

Our local understanding, technical expertise, and comprehensive knowledge of the CEQA/NEPA process, wetlands, and our relationship with regulatory agencies will help expedite this project. You have ECORP's commitment to this project and assurance of our dedication to the successful completion of each task in a time- and cost-efficient manner that ultimately produces a legally defensible document.

Mr. Chapman is ECORP's point of contact for the LCWA to whom correspondence regarding this submittal and any technical questions should be addressed. His contact information is:

Todd Chapman, Aquatic Resources Manager
ECORP Consulting, Inc.
1801 Park Court Place, B-103
Santa Ana, CA 92701
Tel: (714) 648-0630, Fax: (714) 648-0935
Email: tchapman@ecorpconsulting.com

Please do not hesitate to contact us with questions or for clarification on any matter concerning our submittal.

Respectfully submitted,

ECORP Consulting, Inc.



Jesus "Freddie" Olmos
Senior Environmental Scientist/
Assistant CEQA Group Manager

SECTION 2 – CORPORATE DOCUMENTATION AND STATEMENT OF QUALIFICATIONS AND EXPERIENCE

2.1 ECORP Consulting, Inc.

ECORP Consulting, Inc. (ECORP) is a California corporation that assists our public and private clients with a wide range of environmental services including technical expertise in planning, biological, cultural, and water resources and in regulatory compliance with the California Environmental Quality Act (CEQA), National Environmental Policy Act (NEPA), Clean Water Act, federal and state Endangered Species Acts (ESA), National Historic Preservation Act (NHPA), and other laws and regulations. ECORP has established professional working relationships with federal and state regulatory agencies, based on technical excellence and a thorough understanding of regulatory processes. We are experienced with the California Fish and Game Code Section 1600; the regulatory requirements of the federal Clean Water Act (CWA) Sections 401, 402, and 404; NEPA; NHPA Sections 106 and 110; federal ESA Sections 7 and 10; CEQA; and the California Endangered Species Act (CESA). We also have established working relationships with the resources agencies, including the U.S. Army Corps of Engineers (USACE), California Department of Fish and Wildlife (CDFW), Regional Water Quality Control Board (RWQCB), and the U.S. Fish and Wildlife Service (USFWS). A partial list of our services includes:

NEPA and CEQA Documentation

- Preliminary Project Assessments/Constraints Analyses
- CEQA Review and Compliance (Categorical Exemptions, Initial Studies, Mitigated Negative Declarations, Environmental Impact Reports)
- NEPA Review and Compliance (Categorical Exclusions, Environmental Assessments, Environmental Impact Studies)
- Third-Party Review of Applicant-Prepared Documents
- Public Participation, Including English-Spanish Translation of Public Notices and Public Information Materials
- Environmental Justice

Biological Resources

- Threatened, Endangered, and Special-Status Species Surveys and Permitting
- Wetland Delineations
- Terrestrial and Aquatic Species Surveys and Habitat Assessments
- Botanical Services
- Bat Surveys and Bat Exclusion Management
- Stream Bioassessment Studies (including Benthic Macroinvertebrate Sampling)
- Preparation and Implementation of Natural Community Conservation Plans (NCCPs) and

Restoration, Permitting and Land Management

- Wetland Assessment and Delineation
- Environmental Permits under Clean Water Act Sections 401, 402, and 404; Fish and Game Code Section 1602; and Porter-Cologne Act
- Federal Energy Regulatory Commission Licensing Support
- Mitigation and Compensation Planning
- Mitigation Banking Support
- Habitat Restoration, Planning and Design
- Open Space Management
- Storm Water Pollution Prevention Plans (SWPPP)
- Long-term Monitoring and Management

Geographic Information Systems and Cartography

- Project-Specific and Regional Resource Mapping Services
- Geographic Information Systems (GIS) Data Capture and Spatial Analysis
- Lidar Data Acquisition and Analysis
- Image Processing and Land Cover Analysis
- Computer-Based Cartography

Water Resources

- Hydrologic Modeling and Assessment
- Stream Surveys and Restoration
- Stream Gaging and Related Services
- Water Resources Management
- Watershed Planning and Management

- Habitat Conservation Plans (HCPs)
- Support of In-formal and Formal Consultation under Section 7 of the Endangered Species Act
- California Rapid Assessment Method (CRAM) for Wetland, Riparian, and Stream Habitats

Cultural Resources

- Cultural Resources Management
- Archaeological Services
- Architectural History Services
- Cultural Resources Consultation and Agreement Documents
- Native American Consultation
- Memoranda of Agreement/Programmatic Agreements
- Geoarchaeology

- Water Rights Determination and Accounting
- Hydropower Project Economics and Operations

Construction Monitoring

- Mitigation Development and Monitoring
- Preconstruction Surveys
- Biological Resources Monitoring
- Cultural Resources Monitoring
- Coordination with Native American Monitors
- English-Spanish Translation of Worker Education Materials

Interpretation and Aesthetics

- Visual Impact Analysis
- Interpretive and Educational Projects
- Native Habitat Interpretive Centers

ECORP provides support over the life of a project from initial baseline studies; to environmental planning and review, permit negotiation, liaison with resource agencies, and mitigation design; and through to construction supervision, monitoring, and compliance reporting. ECORP brings to the LCWA an experienced team of more than 100 CEQA and NEPA specialists, environmental permitting specialists, environmental analysts, terrestrial and aquatic biologists, wetland specialists, archaeologists/cultural resource specialists, architectural historians, landscape architects, engineers, hydrologists, and geographic information system (GIS) specialists.

ECORP's CEQA/NEPA group specializes in environmental documentation for a variety of project types, including recreational, residential, commercial, and industrial. Our Aquatic (marine and freshwater), Biology, Restoration, Regulatory Permitting, and Water Resources groups specialize in wetlands and terrestrial biological studies and documentation. Descriptions of projects where similar services as those requested are included in Section 2.3 and 2.4 of this proposal. ECORP's previous experience in coastal environments and on other similar projects enables us to complete the peer review of the EIS/EIR and technical studies as an extension of LCWA Staff.

2.2 Subconsultants

ECORP has included four subcontractors on our team to provide the expertise in assisting the LCWA with technical review of project studies and planning documents. If additional specialty subcontractors are required ECORP will coordinate with the LCWA to provide those services.

- ◆ **Withers & Sandgren** will provide landscape architecture review.
- ◆ **TerraCosta Consulting Group, Inc.** (TerraCosta) will provide sediment characterization and sea level rise review.
- ◆ **Group Delta Consultants, Inc.** (Group Delta) will provide hazardous materials (Phase I and II) peer reviews, and any required geotechnical or hydrology/water quality review.
- ◆ **Avance Public Outreach & Communications** (Avance) will provide review of the community planning process.

Withers & Sandgren

Withers & Sandgren is a Limited Liability Corporation, certified as a WBE/SBE, and LEED accredited. They have been offering services in Landscape Architecture, Environmental Planning, and Urban Design since 1995. Withers & Sandgren's strength lies in the firm's range of expertise. Much of the principal's collective years of experience in landscape architecture directly relate to environmental issues and the redefinition of urban environmental practices. Principals and staff also have unique practical experience in passive and active park design and construction, site restoration, trail construction, restoration and custom designed trail markers, equestrian facilities, on-site storm water management, and the successful blending of native plants with passive and active recreation areas. Projects encompass large scale city and county park work, city advisory work in the form of reviews and assistance with new or revised standards and planning strategies, and in the areas of urban design, streetscape development, industrial, commercial, institutional work, and master planning. Withers & Sandgren has a reputation for being exceptionally responsive to client's needs and time-frames and manages tasks and projects efficiently. The firm principals are directly involved with each project and have chosen to maintain a small, but effective, corporate structure that enables them to have complete management control over each project.

TerraCosta Consulting Group, Inc.

TerraCosta Consulting Group, Inc. (TerraCosta) is a geotechnical engineering firm providing consulting services in Southern California. Their office has a staff of eleven which includes three registered engineers (including one geotechnical engineering Ph.D.), three registered geologists, and one Ph.D.-level oceanographer offering over 250 years of combined professional experience in the earth and environmental sciences. TerraCosta's disciplines cover a complete range of expertise in geology and geotechnical engineering providing design input in support of Environmental Impact Reports/Environmental Impact Statements (EIR/EIS). Further, TerraCosta provides geotechnical engineering, analysis, and design work in slope stability, earthwork, earth retaining systems, seismicity and earthquake engineering, slope protection, road and pavement design, general soils investigation, testing services, construction support, contract administration, coastal and port/harbor engineering, hydraulics, fault studies, landslide stabilization, and the preparation of project plans and specifications. In recent years, TerraCosta has performed numerous geotechnical investigations and provided geotechnical studies in support of EIRs on projects involving habitat restoration, pipeline alignments, canyon pipeline maintenance-access pathways, hydrology, and low-water crossings.

Group Delta Consultants, Inc.

Group Delta Consultants, Inc. (Group Delta) was established in 1986 as a California corporation and is a full-service environmental engineering, geotechnical engineering, geology, special inspection and materials testing firm with 110 employees. They have eight offices located in the counties of San Bernardino, Orange, Los Angeles, San Diego, Solano, and Alameda. Group Delta's environmental team consists of highly skilled environmental engineers, geologists, scientists, industrial hygienists,

technicians, and support personnel specialized in their respective fields. Group Delta's environmental services include: *Stormwater/Water Quality Services; Initial Site Assessments & Environmental Site Assessments; Site Investigations; Site Remediation; Hazardous Materials Management & Industrial Hygiene; and Construction Compliance Support.*

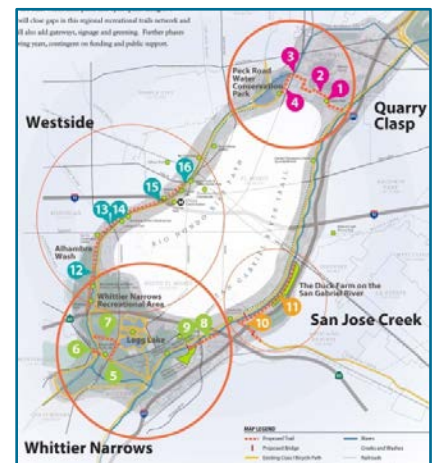
Avance Public Outreach and Communications

Avance Public Outreach and Communications (Avance) specializes in community outreach, civic engagement, public participation programs and construction outreach efforts for large and complex public infrastructure projects. "Avance" (meaning "to advance" in Spanish), develops and implements outreach programs focused on "advancing" their clients' goals and messages to the ever increasing Southern California multicultural communities. Avance engages with a variety of stakeholders, including government agencies, elected officials, private businesses and communities to ensure an understanding of proposed projects and/or initiatives. Avance maintains a commitment to public outreach, education and engagement by applying a grassroots approach to their programs. This approach ensures messages are delivered in a simple and easy-to-understand manner and that communications take place where stakeholders are already congregating such as parks, schools, libraries, churches and other activity centers. Recognizing that working with multi-lingual communities not only requires the ability to speak in their own language, but understanding their sensibilities as well, Avance seeks personal interaction to ensure quality, credible, and comprehensive outreach efforts for all stakeholders. Avance's principals are well known in the community engagement industry, with over 45 years of combined experience. They are recognized leaders in developing and implementing public outreach and participation programs for agencies such as the Los Angeles County Metropolitan Transportation Authority, Orange County Transportation Authority, Caltrans, California Department of General Services – Real Estate Services Division, and the City of Los Angeles.

2.3 On-Call and Related Project Experience

Program EIR for the Emerald Necklace Implementation Plan – Phase I, Los Angeles County (Watershed Conservation Authority as a sub to Withers & Sandgren)

The Watershed Conservation Authority (WCA), a joint powers authority of the San Gabriel and Lower Los Angeles Rivers and Mountains Conservancy (RMC) and the Los Angeles County Flood Control District, proposed improvements to a 17-mile interconnected network of bikeways, multi-use trails, parks, greenways, and bridges along the **Rio Hondo and San Gabriel River** known as the Emerald Necklace. The regional recreational system of parks and trails includes the cities of Irwindale, Arcadia, Baldwin Park, El Monte, South El Monte, Whittier, Montebello, Monrovia, Industry, Rosemead, and the surrounding communities. The goal of the WCA was to construct 16 projects within the Emerald Necklace under its jurisdiction



ECORP Consulting, Inc.'s Rate Schedule¹

CLASSIFICATION	HOURLY RATE
Project Principal	\$150-\$230
Project Managers	\$100-\$230
Cultural Resources Staff.....	\$70-\$200
Engineer/Biologist/Ecologist/Scientist	\$95-\$200
Environmental Specialist/Planner.....	\$55-\$190
Construction Monitoring	\$70-\$190
CAD/GIS/Software Specialist	\$70-\$190
QA-QC/Technical Editor	\$90-\$150
Staff Engineer/Biologist/Ecologist/Scientist	\$85-\$135
Assistant/Associate/Staff Project Manager	\$65-\$135
Project Assistant/Project Administrator/Project Accountant	\$65-\$175
Lab Technician	\$65-\$90
Word Processing/Production Coordinator	\$55-\$90

Expense Reimbursement/Other:

1. Rates will escalate at 3% per annum.
2. Computer, facsimile, and telephone are included in the billing rates, and there is no additional charge.
3. Copies (color and black and white), equipment and other direct expenses are reimbursed with a 14% administrative handling charge (excluding per diem).
4. Subconsultant expenses are reimbursed with a 12% administrative handling charge.
5. Mileage is reimbursed at current IRS rate.
6. Per Diem, depending upon location, may be charged where overnight stays are required.
7. Expert Witness Testimony, including Depositions, is billed at time and a half.

¹ Rates effective January 2017 and are subject to change.

February 3, 2017– Item 9

RESOLUTION 2017 – 01

RESOLUTION OF THE LOS CERRITOS WETLANDS AUTHORITY TO AUTHORIZE AN ON-CALL CONSULTANT CONTRACT TO ECORP CONSULTING, INC. AND MOFFATT & NICHOL FOR REVIEW OF SPECIALIZED ENVIRONMENTAL REPORTS

WHEREAS, the Los Cerritos Wetlands Authority has been established between the Coastal Conservancy, the San Gabriel and Lower Los Angeles Rivers and Mountains Conservancy, the City of Seal Beach and the City of Long Beach to facilitate the acquisition, protection, conservation, restoration, maintenance and operation an environmental enhancement of the Los Cerritos Wetlands; and

WHEREAS, the LCWA has further been established to focus on projects which will provide open space, habitat restoration, and watershed improvement projects within the Los Cerritos Wetlands; and

WHEREAS, this action will amend the Los Cerritos Wetlands Authority Budget FY16/17 as necessary; and

WHEREAS, the proposed action is exempt from the California Environmental Quality Act; NOW

Therefore be it resolved that the LCWA hereby:

1. FINDS that the actions contemplated by this resolution is exempt from the requirements of the California Environmental Quality Act.
2. FINDS that this action is consistent with the purposes and objectives of the LCWA.
3. Authorizes the Executive Officer to negotiate an on-call consultant contract to ECORP Consulting Inc and Moffatt & Nichol for review of specialized environmental reports and make necessary budget revisions
4. ADOPTS the staff report dated February 3, 2017.

~ End of Resolution ~

Passed and Adopted by the Board of the
LOS CERRITOS WETLANDS AUTHORITY ON February 3, 2017.

Governing Board Chair

ATTEST:

David Edsall
Deputy Attorney General