

Los Cerritos Wetlands Authority**Date:** November 2, 2017**To:** Governing Board Members**From:** Mark Stanley, Executive Officer**Subject:** Item 7: Status Report on Workplan Implementation including Los Cerritos Wetlands Stewardship Program and Los Cerritos Wetlands Conceptual Restoration Plan.

BACKGROUND: At the September 19, 2006 meeting, the Board adopted the Workplan set forth below. An updated description of the status of each workplan item is detailed in the following table:

<u>November 2017 WORKPLAN STATUS UPDATE</u>		
LCWA Projects		
Task	Description	Status
Potential Funding Sources		
State Water Board Once-through Cooling Interim Mitigation Funding will depend on mitigation fees collected	The Once-Through Cooling (OTC) Policy requires owners or operators of existing power plants to implement measures to mitigate interim impingement and entrainment impacts resulting from their cooling water intake structures. The interim mitigation period commenced on October 1, 2015 and continues up to and until owners or operators achieve their final compliance deadlines as outlined in the OTC Policy.	Funding will depend on the mitigation fees collected by the State Coastal Conservancy
Wetlands Recovery Project In-Lieu Fee Program Progress Report Funding will depend on mitigation fees collected	Implementation of the proposed Program will provide a potential funding source to implement projects that fulfill the SCWRP goals, thereby generating substantial ecological benefits within the Program's Service Area, while also providing a cooperative mechanism for Compensatory Mitigation that addresses the needs of multiple federal, state, and local agencies.	Funding will depend on mitigation fees collected http://scwrp.org/

Task	Description	Status
Potential Funding Sources		
Water Quality, Supply, and Infrastructure Improvement Act of 2014 (Proposition 1)	Voters, would authorize \$7.545 billion dollars in general obligation bonds to fund ecosystems and watershed protection and restoration, water supply infrastructure projects, including surface and groundwater storage, and drinking water protection.	Funding is dependent on State Agency Funding Grant cycles http://resources.ca.gov/grants/ http://bondaccountability.resources.ca.gov/p1.aspx
Capital Projects & Initiatives		
Los Cerritos Wetlands Planning and Restoration Project to complete the environmental review of the CRP per CEQA	Determine if the CEQA document should be a Programmatic or Project Specific level analysis.	Funding is provided to conduct CEQA analysis to engage an environmental consultant contract.
Los Cerritos Wetlands Acquisition of the Bryant Properties	Complete the acquisition of all property owned by the Bryant Family for an addition of 18 acres along the frontage of 2 nd Street- Westminster Avenue added to the property preserved for purity as public.	Staff and Legal Counsel are working with Steve Bryant and Kevin Brazil to complete the final Appraisal Report for a secondary state review for the acquisition of Assessor Parcel Nos 7237-020-053; 054.
Los Cerritos Wetlands LLC Restoration and Oil Consolidation Project	Review and provide comments on the Draft EIR. Continue to track all other aspects of the project including the mitigation bank and entitlement process.	The project would implement a comprehensive wetlands restoration project which will restore a privately-owned oil field in the City of Long Beach through creation of a wetlands mitigation bank. The project includes the relocation of certain oil facilities currently located on the LCWLLC Field and City-owned property to two off-site properties (LCWA OTD Parcel and Pumpkin Patch site). LCWLLC is currently analyzing various significant impacts such as the completion of Phase I and II, archaeological, biological assessments. Recent outreach with a full weekend open to the public open house was offered to provide more information. This project is expecting to go before LB Planning Commission in November 2017, and LB City Council in December 2017.

Task	Description	Status
Capital Projects & Initiatives		
Option Agreement to transfer properties between Los Cerritos Wetlands LLC(LCWLLC) and the LCWA	LCWLLC and the LCWA executed an option agreement that provides for the exchange of real property. Agreement was signed on 9/2/16 to transfer the LCWA APN 7237-019-809, approximately 5.11 acres for the LCWLLC property described as APNs 7237-017-010; 7237-017-011; 7237-017-012; 7237-0217-013; 7237-017-014; 7237-017-019; 7237-017-805; 7237-017-806; 7237-017-807; 7237-017-808;7237-017-809 approximately 154 acres.	The LCWA received the option agreement funds which will be used to hire consultants to review technical studies.
LCWA Mitigation Policy	Staff will require consultant services in order to assist in the development of the mitigation policy and currently the FY16/17 Budget does not have any unrestricted funds to support authorizing a consultant contract.	The LCWA would require additional funds from its joint partners in order to provide the financial support for authorizing a consultant contract for services and development of the mitigation policy. The cost to develop the mitigation policy would range from \$50,000 to \$100,000. These cost estimates were determined by researching various non-profits, regulatory agencies and other local and state agencies whom have completed similar and comparable mitigation policies.
DWP Parcel (PCH) at Pacific Coast Highway	This site poses significant opportunities for enhancing public access to the eastern side of the Los Cerritos Wetlands area adjoining the San Gabriel River.	Recently the LCWA was made aware the City of Los Angeles would replace the existing fence-line with an 8-ft tall, tight-meshed, chain-link fence with razor wire around the entire Haynes Cooling Channel. This fencing project will impact over 2,000 feet of LCWA fence line, including sections that run along sensitive habitat at Zedler Marsh. Staff is working with DWP to outline concerns regarding the installation of the fence and possibly installing a fence that is more sensitive to the habitat.

Task	Description	Status
City of Long Beach Pending Environmental Documents		
City of Long Beach Southeast Area Specific Plan (SEASP)	The City of Long Beach continues to work on the Southeast Area Specific Plan which covers approximately 1,500-acres of southeast Long Beach. http://www.lbds.info/seadip_update/	The Draft Environmental Impact Report was approved by City of Long Beach Planning Commission and Long Beach City Council with some changes to the document. Buildings over 7ft tall are not allowed on the Marketplace Property, but can be allowed on the other sites under certain conditions. A Wetlands Mitigation Fund will be used for the LCWA and City properties towards the wetlands. In the future, the City will be working with the LCWA to appropriate funds. However, the Los Cerritos Wetlands Land Trust filed a writ of mandate to CA Superior Court following the City Council's decision stating the City was unlawful to approve SEASP.
Los Cerritos Wetlands LLC (LCWLLC) Los Cerritos Wetlands Restoration and Oil Consolidation Project	The project is comprised of four sites located at: 6422 E. 2nd Street (LCW LLC Oil Field Site); 6701 E. Pacific Coast Highway (Pumpkin Patch site); northeast corner of Studebaker Road and 2nd Street (LCWA OTD Parcel); and 2nd Street and Shopkeeper Road (City-Property site) in the City of Long Beach. http://www.lbds.info/planning/environmental_planning/environmental_reports.asp	Draft EIR was completed and released for public comment in July 2017. The LCWA's team of consultants provided comments on the Draft EIR directly to the applicant. The mitigation bank prospectus has been reviewed by the agencies after no public comment was received. The EIR will be going to the Planning Commission in November 2017, City Council in December 2017, and Coastal Commission in 2018. The LCWA and BOMP are also working with the City to make amendments to the Local Coastal Plan.
City of Long Beach Pending Environmental Documents		
PCH & 2nd Project Initial Study PCH & 2nd NOP	This project is located at 6400 E. Pacific Coast Highway (bounded by 2 nd Street to the north, Pacific Coast Highway to the east, a retail shopping center (Marina Shores Shopping Center) to the south, and Marina Drive to the west. http://www.lbds.info/planning/environmental_planning/environmental_reports.asp	The proposed project involves demolition of the existing Seaport Marina Hotel and construction of a commercial center totaling 245,000 square feet (216,000 square feet of retail space and 29,000 square feet of restaurant space) and 1,172 on-site parking spaces (1,044 space three-level parking structure and 128 surface parking spaces). The proposed commercial structures would be one- and two-story buildings with a maximum height of 35 feet.

Task	Description	Status
Lease Agreements		
<p>OTD/Edison Parcel Los Angeles County APN 7237-019-809</p> <p>Ellis Equipment, Inc. Lease Agreement</p> <p>Lease Fee = \$2,090 per month</p>	<p>The OTD Parcel is located on the northeast corner of Studebaker road and 2nd Street in the City of Long Beach and commonly referred to as the 'Edison Parcel' or 'Offer To Dedicate (OTD) Parcel.'</p>	<p>Ellis lease agreement utilizes only a portion of the OTD Parcel for storage of construction material. Ellis lease agreement has been amended to a month-to-month lease.</p>
<p>OTD/Edison Parcel Los Angeles County APN 7237-019-809</p> <p>D & S Washout Systems Lease Agreement</p> <p>Lease Fee = \$950 per month</p>	<p>The OTD Parcel is located on the northeast corner of Studebaker road and 2nd Street in the City of Long Beach and commonly referred to as the 'Edison Parcel' or 'Offer To Dedicate (OTD) Parcel.'</p>	<p>D & S Washout Systems Lease Agreement utilizes a portion of the OTD parcel for the storage of work trucks and construction materials. The lease agreement has been amended to a month-to-month lease.</p>
<p>California State Lands Commission Lease Agreement PRC9005.9. Orange County APNs: 043- 160-47; 043-160-36; 043-160-45; and 043- 160-53</p> <p>August 14, 2012 through August 13, 2022</p>	<p>The State Lands Commission issued the LCWA a lease agreement for four parcels approximately totaling four acres adjacent to the Los Cerritos Wetlands Authority Hellman/Phase 2 in the City of Seal Beach.</p>	<p>Staff coordinates with SLC office for ongoing repairs of fence property and continue to stage the Los Cerritos Wetlands Stewardship Program from this site.</p>
<p>City of Long Beach Marketplace Marsh License Agreement for Los Angeles County APN 7237-020-21</p> <p>June 7, 2010 through June 30, 2020</p>	<p>The property is approximately 29.38-acres south of 2nd Street</p>	<p>The LCWA recently updated the license agreement to allow tours of the wetlands and extended the license agreement through June 30, 2020.</p>

Task	Description	Status
Grants – COMPLETED		
A total of 9 grants have been completed by the LCWA and LCWLT	A total of \$6,025,400 grant funds were acquired and used towards acquisition, restoration studies, restoration projects, and education programs.	See link for details on all completed grants.
Grants – ACTIVE		
<p>National Coastal Wetlands Conservation Grant Application</p> <p><u>Active</u></p>	<p>The State Coastal Conservancy (SCC) applied on behalf of the LCWA for the NCWC grant.</p> <p>Performance Period January 29, 2013 through December 31, 2017</p> <p>Total Funding \$1,000,000 Funding Remaining \$1,000,000</p>	<p>The National Coastal Wetlands Conservation Grant was submitted on July 13, 2012 by the SCC for the acquisition of the Steam Shovel Slough. The SCC was awarded the \$1,000,000 grant for the acquisition of Steam Shovel Slough on January 29, 2013. The funds have been re-assigned to the Bryant acquisition.</p> <p>Applying for an extension to use these funds.</p>
<p>State Coastal Conservancy Proposition 1</p> <p>Los Cerritos Wetlands Planning and Restoration Project</p> <p><u>Active</u></p>	<p>Grants funds to complete the environmental review of the CRP per CEQA. Environmental review of the CRP's three proposed alternatives or a hybrid alternative.</p> <p>Performance Period February 1, 2017 through June 30, 2019</p> <p>Total Funding \$500,000 Funding Remaining: \$500,000</p>	<p>The LCWA was successfully awarded the grant funds for the CEQA Planning Document, implementation should commence immediately.</p>
<p>San Gabriel and Lower Los Angeles Rivers and Mountains Conservancy Grant State Coastal Conservancy Proposition 1</p> <p>Los Cerritos Wetlands Planning and Restoration Project Proposition 1 Grants</p> <p><u>Active</u></p>	<p>Grants funds to complete the environmental review of the CRP per CEQA. Environmental review of the CRP's three proposed alternatives or a hybrid alternative.</p> <p>Performance Period February 1, 2017 through June 30, 2019</p> <p>Total Funding \$350,000 Funding Remaining: \$350,000</p>	<p>The LCWA was successfully awarded the grant funds for the CEQA Planning Document, implementation should commence immediately.</p>

Task	Description	Status
Grants – ACTIVE		
<p>San Gabriel and Lower Los Angeles Rivers and Mountains Conservancy Grant State Coastal Conservancy Proposition 1</p> <p>Los Cerritos Wetlands Acquisition of the Bryant Properties</p> <p><u>Active</u></p>	<p>LCWA is seeking to acquire the frontage and remaining Bryant-Dakin Properties located along 2nd Street/Westminster Avenue in the City of Long Beach totaling approximately 18 acres (Los County Assessor Parcel Nos 7237-020-053 and 7237-020-054).</p> <p>Performance Period February 1, 2017 through June 30, 2018</p> <p>Total Funding \$1,000,000 Funding Remaining: \$1,000,000</p>	<p>The LCWA was successfully awarded the grant funds and negotiations will commence immediately.</p>
Consultant Contracts - COMPLETED		
5 Completed Consultant Contracts	Please see link for details.	
Consultant Contracts - ACTIVE		
<p>LCWA16003 Tidal Influence, LLC Property and Project Management Services</p> <p><u>Active</u></p>	<p>The LCWA authorized a contract to Tidal Influence for grant and project management services, property management services for all the LCWA properties, coordination of the Stewardship Program and on-call services as necessary.</p> <p>Performance Period March 1, 2017 through March 1, 2019</p> <p>Total Funding: \$59,000 Remaining Funding: \$35,700</p>	<p>Please see attached Land Management Reports from July – September 2017.</p>

Task	Description	Status
Consultant Contracts - ACTIVE		
LCWA 13003 Los Cerritos Wetlands Stewards Homeless Liaison Contract Amended <u>Active</u>	<p>The Los Cerritos Wetlands Stewards and the LCWA have a mutual interest in the implementation of the Stewardship Program which will promote and provide leadership in conservation for educating members as well as the community to farther the appreciation of the wetlands habitat conservation.</p> <p>Performance Period January 1, 2016 through December 30, 2017</p> <p>Total Funding: \$8,700 Remaining Funding: \$8,700</p>	<p>The contract addresses the safety and security of the LCWA properties and meets the LCWA goals and objectives. Currently the Los Cerritos Wetlands Stewards are coordinating any removal of homeless encampments at several locations within the LCWA properties.</p>
Memorandum of Understanding/Agreements		
LCWA08008 Signal Hill Petroleum, Inc. Coastal Development Permit for Vegetation Removal LCWA Phase 1 Properties <u>Active</u>	<p>Signal Hill Petroleum, Inc. conducts the following activities (1) removing vegetation, debris and soil from the storm water collection and retention system, (2) controlling vegetation surrounding all oil pumps, electrical poles, and pipelines, and (3) removing vegetation surrounding all oil production facilities and buildings.</p> <p>Performance Period March 1, 2016 through December 30, 2017</p> <p>Total Funding: \$20,000 Remaining Funding: \$9,966.91</p>	<p>Tidal Influence was contracted to manage MOA.</p> <p>Signal Hill Petroleum, Inc. annually provides \$10,000 to offset their impacts from proposed work. The LCWA is implementing the 2017 work plan as approved by the Coastal Commission in March 2016.</p>
LCWA13002 Southern California Edison Company Memorandum of Agreement <u>Active</u>	<p>The LCWA entered into a Memorandum of Agreement with Southern California Edison Company to accept funds to provide out-of-kind compensatory mitigation for impacts to shoreline habitat at Catalina Island.</p> <p>Performance Period June 14, 2014 through June 30, 2020</p> <p>Total Funding: \$25,000 Remaining Funding: \$4,634.93</p>	<p>Tidal Influence was contracted to manage MOA. Staff has completed the Habitat Mitigation and Monitoring Plan which allowed for procurement and installation of 425 salt marsh plants.</p> <p>Tidal Influence completed the 2nd Year Monitoring Report to Southern California Edison for the purpose of presenting the baseline conditions of the 0.16 acre restoration site at Zedler Marsh.</p>

LCW Stewardship Program		
Task	Description	Status
Potential Funding Sources		
City of Long Beach Measure A, Public Safety, Infrastructure Repair and Neighborhood Services Measure	The City of Long Beach established a one cent (1%) transactions and use (sales) tax for six years, generating approximately \$48 million annually, declining to one-half cent for four years and then ending, requiring a citizens' advisory committee and independent audits, with all funds remaining in Long Beach.	The City of Long Beach allocated an estimated \$500,000 for restoration work for the Los Cerritos Wetlands. The status of the funding is pending.
Los Angeles County: Safe, Clean Neighborhood Parks, Open Space, Beaches, Rivers Protection, and Water Conservation Measure Section 6(e); subsection 2(A) Supervisor Janice Hahn, Fourth District Potentially \$463,983 in funding	To replace expiring local funding for safe, clean neighborhood/city/county parks; increase safe playgrounds, reduce gang activity; keep neighborhood recreation/senior centers, drinking water safe; protect beaches, rivers, water resources, remaining natural areas/open space; 1.5 cents will be levied annually per square foot of improved property in Los Angeles County, with bond authority, requiring citizen oversight, independent audits, and funds used locally.	Up to fifteen percent (15%) shall be set aside and designated as the maintenance and servicing amount, and shall be used only to maintain and service, including resource protection activities for the capital outlay projects funded by the District... ...The maintenance and servicing amount shall be allocated each year as follows: ...point five percent (0.5%) to the Los Cerritos Wetlands Authority... An estimated \$92,796,612 in Annual Taxes to be collected.
Education Programs		
Public Access Improvement and Wetlands Restoration	Restoration and enhancement of existing wetlands function is one of the primary objectives of the LCWA. Public access for wildlife viewing and enjoyment may involve site improvements.	LCWA has successfully partnered with Los Cerritos Wetlands Land Trust (LCWLT) and they have successfully applied for and received several grants that provide for the Los Cerritos Wetlands Stewardship Program monthly nature walks through December 2017. Please refer to the attached Exhibit B: Los Cerritos Wetlands Stewardship Program updates for a full report.

Task	Description	Status
Capital Projects & Initiatives		
<p>County of Orange, OC Public Works Contract (MA-080-15010071)</p> <p><u>Active</u></p>	<p>Orange County Public Works entered into contract with LCWA to provide wetland restoration services and supplies including five years of monitoring reports from the LCWA's Stewardship Program</p> <p>Performance Period September 1, 2014 through September 1, 2019</p> <p>Total Funding \$155,500 Funding Remaining: \$35,362.50</p>	<p>Tidal Influence was contracted to manage and implement the project, planting occurred on the Orange County mitigation site, and Staff continues to monitor the progress on the project.</p> <p>LCWA staff will be submitting a Year 3 Monitoring Report in December 2017.</p>
<p>Tarplant Mitigation Project - Ascon</p> <p><u>Active</u></p>	<p>The LCWA entered into a Memorandum of Agreement with Ascon to accept mitigation funds for the Southern Tarplant Mitigation Plan for a five year mitigation plan to grow and monitor Southern Tarplant at Zedler Marsh</p> <p>Performance Period November 3, 2016 through November 1, 2021</p> <p>Year 1 Funding: \$96,070 Year 1 Remaining Funding: \$49,964.29 Year 2 Funding: \$62,410 Year 2 Remaining Funding: \$62,410</p>	<p>Tidal Influence was contracted to manage and implement this project, seeding, and monitoring plan at Zedler Marsh. Staff continues to monitor the progress on the project.</p> <p>Progress:</p> <ul style="list-style-type: none"> - Tarplant seeding - Fencing installation - Continued watering of tarplant seedlings - Non-native vegetation control - Year 1 photo point monitoring completed in June and September 2017 documenting project progress
Grants – COMPLETED		
<p>A total of 9 grants completed by the LCWA and LCWLT</p>	<p>A total of \$6,025,400 grant funds were acquired and used towards acquisition, restoration studies, restoration projects, and education programs.</p>	<p>See link for details on all completed grants.</p>

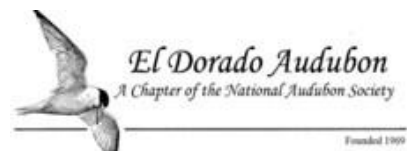
Task	Description	Status
Grants – ACTIVE		
<p>LCWA14001 Los Angeles County Regional Park and Open Space District for the Fourth Supervisorial District</p> <p>Zedler Marsh Urban Trails</p> <p><u>Active</u></p>	<p>The LCWA applied for the 2013 Competitive Trails Grant Program funds for the purpose of restoring public coastal access opportunities while stabilizing native coastal habitat within the Phase 1 properties specifically within Zedler Marsh.</p> <p>Performance Period March 4, 2014 through December 31, 2016 Total Funding \$105,600 Funding Remaining: \$0</p>	<p>The grant was completed on June 30, 2016 with the final installation of native plants along the improved trail system. In addition, trail interpretive signage were printed and installed and 3 new trail benches were along the trail system. Installed new irrigation for plantings along the trails system. Staff is completing invoicing and other administrative documents to close-out grant.</p>
<p>LCWA14002</p> <p>San Gabriel and Lower Los Angeles Rivers and Mountains Conservancy</p> <p>Los Cerritos Wetlands Trails Improvement Project from the Funds</p> <p><u>Active</u></p>	<p>LCWA applied for matching grant funds for the Los Cerritos Wetlands Trails Improvement Project from the San Gabriel and Lower Los Angeles Rivers and Mountains Conservancy which were awarded on June 23, 2014</p> <p>Performance Period March 4, 2014 through November 30, 2017</p> <p>Total Funding \$98,000 Funding Remaining: \$2,266.34</p>	<p>The grant has completed the following items:</p> <ul style="list-style-type: none"> -7 public restoration events were completed to conduct restoration work along the trails -Installed 2,000 native plants along the trail system -Installation of decomposed granite trails - Created education/picnic area at the trail entrance - Held a Grand Opening Event on September 30th with an attendance of over 150 people - Once funding is in place, the trails will be open to the public regularly throughout each month
<p>The Orange County Community Fund</p> <p>Warne Family Endowment Fund for Endangered Species Protection Grant</p> <p><u>Active</u></p>	<p>The LCWLT applied for the Warne Foundation Grant Program to fund Belding's Savannah Surveys at Los Cerritos Wetlands.</p> <p>Performance Period January 2017 through December 31, 2017</p> <p>Total Funding: \$31,000 Funding Remaining: \$19,543.46</p>	<p>Belding's Savannah Sparrow surveys will be conducted twice a month during breeding and nesting season to determine breeding territories for pairs of Belding's. A portion of the grant also goes towards restoring Belding's Savannah Sparrow habitat outside of nesting season and 6 months of Stewardship Program 1st Saturday Restoration Events and 3rd Friday Trash Clean-ups in LCW.</p> <ul style="list-style-type: none"> - 16 Belding's Savannah Sparrow surveys have been completed at LCW. - 4 3rd Friday trash cleanups hosted at Zedler Marsh -2 1st Saturday Restoration Events hosted -110 native plants installed -400 lbs of nonnative vegetation removed -200 lbs of trash removed -110 volunteers have contributed towards restoration and trash cleanup programs

Task	Description	Status
Grants – ACTIVE		
California Native Plant Society (CNPS) South Coast Chapter Conze Bequest Grant Program <u>Active</u>	The LCWLT applied for the CNPS Conze Bequest Grant Program to fund a native plant demonstration garden along the Zedler Marsh Trails. Performance Period January 2017 through February 2018 Total Funding: \$6,000 Funding Remaining: \$3,958.90	Work began in May 2017 with the removal of non-native species and growing of native plants, irrigation install, and tilling of the soil. A progress report was sent to CNPS in August 2017. Planting of native plants began in September 2017 with the planting of 125 native wetlands and upland species and will continue through the end of the project in February 2018 Progress report available in Aug. 2017.
California State Coastal Conservancy Explore the Coast Grant Program <u>Approved</u>	The Los Cerritos Wetlands Land Trust (LCWLT) applied for the Explore the Coast Grant Program to fund education programs at Zedler Marsh. Total Funding: \$15,560 Funding Remaining: \$15,560	The LCWLT will provide bus transportation to and from Zedler Marsh for 15 field trips of LBUSD 3rd grade students.
Memorandum of Understanding/Agreements		
Signal Hill Petroleum, Inc. (SHPI) Memorandum of Agreement <u>Active</u>	The LCWA entered into a Memorandum of Agreement with SHPI to use specific areas within the SHPI current exclusive easement for growth of Southern Tarplant under the Southern Tarplant Mitigation Plan. Performance Period February 3, 2017 through perpetuity	The LCWA will have access to these specific areas within the SHPI exclusive easement into perpetuity.
LCWA13002 Southern California Edison Company Memorandum of Agreement <u>Active</u>	The LCWA entered into a Memorandum of Agreement with Southern California Edison Company to accept funds to provide out-of-kind compensatory mitigation for impacts to shoreline habitat at Catalina Island. Performance Period June 14, 2014 through June 30, 2020 Total Funding: \$25,000 Remaining Funding: \$4,634.93	Tidal Influence was contracted to manage MOA. Staff has completed the Habitat Mitigation and Monitoring Plan which allowed for procurement and installation of 425 salt marsh plants. Tidal Influence completed the 2nd Year Monitoring Report to Southern California Edison for the purpose of presenting the baseline conditions of the 0.16 acre restoration site at Zedler Marsh.

Task	Description	Status
Memorandum of Understanding/Agreements		
LCWA13001 Aquarium of the Pacific Memorandum of Agreement <u>Active</u>	The LCWA entered into a Memorandum of Agreement in order to provide a citizen science sea turtle monitoring program for the general public. Performance Period March 1, 2016 through March 1, 2018.	For updates on the citizen science sea turtle monitoring program, please visit http://www.aquariumofpacific.org/give/member-ship/seaturtles
LCWA13000 Los Cerritos Wetlands Land Trust Memorandum of Agreement <u>Active</u>	The LCWA entered into a MOA with the Los Cerritos Wetlands Land Trust for stewardship services of the Los Cerritos Wetlands Stewardship Program Performance Period March 1, 2016 through March 1, 2018.	Please see the attached Los Cerritos Wetlands Stewardship Program Summary Report.
Memorandum of Agreement with the El Dorado Audubon <u>Active</u>	El Dorado Audubon is working with the LCWA to develop bird walks at LCWA Phase 2 properties. Performance Period March 1, 2016 through March 1, 2018.	Please see the attached El Dorado Audubon Society report for a summary of the Los Cerritos Wetlands Nature/Bird Walks. For more information, please visit http://eldoradoaudubon.org/
Sea and Sage Monthly Bird Counts	Darrell Wilson conducts bird counts using a research permit on the Hellman Properties.	Bird counts from monthly surveys are summarized in reports submitted to LCW Ebird account and are provided in an attached summary report.



Land Management and
Stewardship Program Reports



Field Report Memorandum

To: Mark Stanley, LCWA

From: Eric Zahn, Tidal Influence, LLC

Cc: Marcelo Ceballos, Alene Spindel, & Tia Blair, Tidal Influence

Date: August 7th, 2017

Subject: Land Management Field Report

Sites Inspected: Zedler Marsh, Bryant Lease West, Hellman/Gum Grove, State Lands Parcel, & OTD Parcel

Inspection Date: July 31st, 2017

Note: The locations of critical observations and issues noted in this document are called out on the map on the final page. Photos of certain issues are attached at the end of the report.

OTD Parcel

1. Gates –
 - a. The entrance gate needs barbed wire installed on it. A small gap between two posts needs to be closed.
We recommend hiring a fence contractor.
2. Trails – Ok
3. Fences – Barbed wire needs to be replaced on the portion of the fence line that is nearest the entrance gate. One large fence hole still needs to be fixed located right of the entrance gate. (See photo)
We recommend hiring a fence contractor ASAP.
4. Homeless – A substantial amount of litter, trash, and stolen materials still exist on-site with additional trash added since last months patrol.(See photo)
We recommend this trash is disposed of immediately by the LCWA's homeless contractor.

Zedler Marsh

5. Gates – OK
6. Trails – OK
7. Fences – OK
8. Homeless – OK
9. Other – A number of golf balls have been found on site, likely from the same citizens that were seen hitting golf balls onto the Bryant Lease West parcel from the levee. This is a major safety hazard. **We recommend working with the LCWA's homeless contractor to resolve this issue.** (See photo)

State Lands Parcel

10. Gates – OK
11. Trails – OK
12. Fences – Vegetation is growing out of control along the driveway fence line. **We recommend that this vegetation be cleared in order to assure security of the site.**
13. Homeless – OK

Hellman

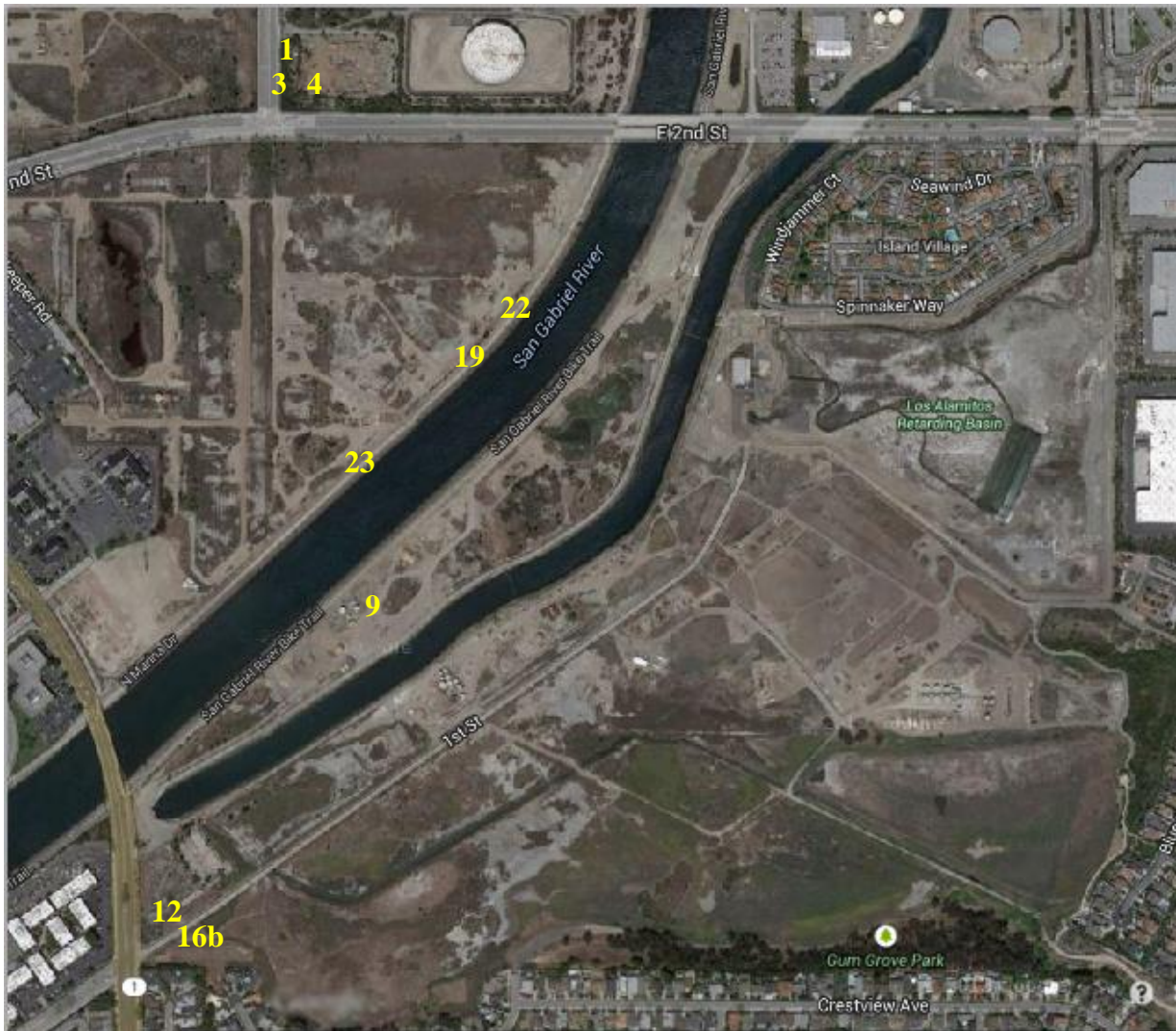
14. Gates – OK
15. Trails – OK/ Trails have been cleared.
16. Fences –
 - a. Two breaches in the fence line along the trails have been found and patched. Additional barbed wire has been added the top of a section of fence line that appears to have trespassers climbing over the top of the fence. (See photos)
 - b. There are a large amount of weeds along the fence line near the entrance gate. **We recommend that this vegetation be cleared to assure security of the site.**
17. Homeless – OK
18. Other – A number of trespassers have been observed on our wildlife cameras. This activity is usually heightened during the summer months, but has decreased significantly this past month. **We recommend continued coordination with SBPD to increase/maintain site patrols.**

Bryant Lease West

19. Gates – All the locks and chains for the gates along levee have been removed and all gates are open. (See photo) **We recommend LCWA staff meeting with LA County to determine a new approach to securing this property. We recommend that lock boxes are installed on the gates.**
20. Trails – OK
21. Fences – Large breach along the East side of the property. (See photo) **We recommend hiring a fence contractor ASAP.**
22. Homeless – 1 active encampment still exists on this property, which has been reported since June 2016. Trash is accumulating near this encampment and needs to be removed. **We recommend that this encampment is immediately remediated and the trash be removed by the LCWA's Homeless contractor.**
23. Other – Citizens were observed hitting golf balls into the property from the levee (see photo). This is a major safety hazard. **We recommend working with the LCWA's homeless contractor to resolve this issue.**

Map

The photos of the issues and observations detailed above are labeled by number. The number on the map below indicates the location of these issues and observations. This includes all issues except for homeless encampments which are detailed in the attached homeless report.



OTD Parcel



Bryant Lease West



This encampment has been reported for over 13 months and has not been remediated



Hellman



Fence Breach Patches



New Barbed wire on fenceline



Zedler



**Golf balls being hit onto
property from levee**

Field Report Memorandum

To: Mark Stanley, LCWA

From: Eric Zahn, Tidal Influence, LLC

Cc: Marcelo Ceballos, Alene Spindel, & Tia Blair, Tidal Influence

Date: August 28th, 2017

Subject: Land Management Field Report

Sites Inspected: Zedler Marsh, Bryant Lease West, Hellman/Gum Grove, State Lands Parcel, & OTD Parcel

Inspection Date: August 28th, 2017

Note: The locations of critical observations and issues noted in this document are called out on the map on the final page. Photos of certain issues are attached at the end of the report.

OTD Parcel

1. Gates –
 - a. The entrance gate needs barbed wire installed on it. A small gap between two posts needs to be closed.
We recommend hiring a fence contractor.
2. Trails – Ok
3. Fences –
 - a. Barbed wire needs to be replaced on the portion of the fence line that is nearest the entrance gate.
We recommend hiring a fence contractor.
 - b. Large breach in fence next to entrance gate has been repaired. (see photo)
4. Homeless – A substantial amount of litter, trash, and stolen materials still exist on-site with additional trash added since last months patrol.(See photo) **We recommend this trash be disposed of immediatley by the LCWA's homeless contractor.**

Zedler Marsh

5. Gates – OK
6. Trails – OK
7. Fences – OK
8. Homeless – OK
9. Other –
 - a. A number of golf balls have been found on site, likely from the same citizens that were seen hitting golf balls onto the Bryant Lease West parcel from the levee. This is a major safety hazard. **We recommend working with the LCWA's homeless contractor to resolve this issue.** (See photo)
 - b. A number of trespassers have been observed coming on site and directed to leave by staff during the month.
We recommend updating 'No Trespassing' signage at entrance gate to make more visible to public.

State Lands Parcel

- 10. Gates – OK
- 11. Trails – OK
- 12. Fences – Vegetation is growing out of control along the driveway fence line. **We recommend that this vegetation be cleared in order to assure security of the site.**
- 13. Homeless – OK

Hellman

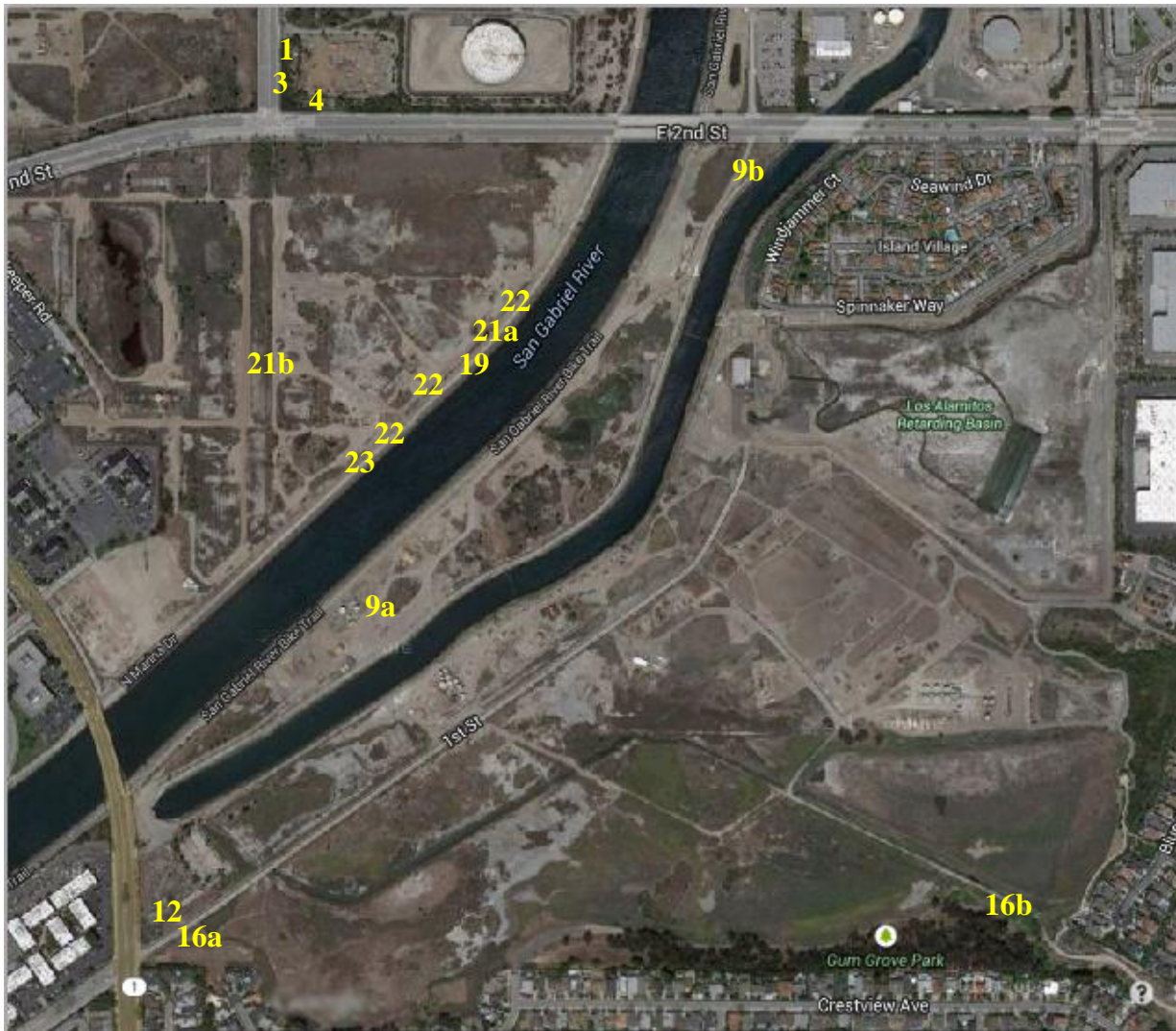
- 14. Gates – OK
- 15. Trails – OK
- 16. Fences –
 - a. There are a large amount of weeds along the fence line near the entrance gate. **We recommend that this vegetation be cleared to assure security of the site.**
 - b. After a few months of monitoring a few fence line sections near Gum Grove Park, the fences breaches appear to be widened and need to be patched or repaired. (See photos) **We recommend hiring a fence contractor.**
- 17. Homeless – OK
- 18. Other – A number of trespassers have been observed on our wildlife cameras. This activity is usually heightened during the summer months, but has decreased significantly these past months. **We recommend continued coordination with SBPD to increase/maintain site patrols.**

Bryant Lease West

- 19. Gates – All the locks and chains for the gates along levee have been removed and all gates are open. (See photo) **We recommend LCWA staff meeting with LA County to determine a new approach to securing this property. We recommend that lock boxes are installed on the gates.**
- 20. Trails – OK
- 21. Fences –
 - a. Large breach along the East side of the property. (See photo) **We recommend hiring a fence contractor ASAP.**
 - b. Small breach along the West side of the property. (See photo) **We recommend hiring a fence contractor.**
- 22. Homeless – **3 ACTIVE ENCAMPMENTS** exist on this property, one of which has been reported since June 2016. Trash is accumulating near the encampments and needs to be removed. **We recommend that these encampments be immediately remediated and the trash be removed by the LCWA's Homeless contractor.**
- 23. Other – Citizens were observed hitting golf balls into the property from the levee (see photo). This is a major safety hazard. **We recommend working with the LCWA's homeless contractor to resolve this issue.**

Map

The photos of the issues and observations detailed above are labeled by number. The number on the map below indicates the location of these issues and observations. This includes all issues except for homeless encampments which are detailed in the attached homeless report.



OTD Parcel



Zedler



**Golf balls being hit onto
property from levee**

Hellman



Fence lines bent and warped down

Bryant Lease West



Bryant Lease West



Field Report Memorandum

To: Mark Stanley, LCWA

From: Eric Zahn, Tidal Influence, LLC

Cc: Marcelo Ceballos, Alene Spindel, & Tia Blair, Tidal Influence

Date: October 9th, 2017

Subject: Land Management Field Report

Sites Inspected: Zedler Marsh, Bryant Lease West, Hellman/Gum Grove, State Lands Parcel, & OTD Parcel

Inspection Date: September 28th, 2017

Note: The locations of critical observations and issues noted in this document are called out on the map on the final page. Photos of certain issues are attached at the end of the report.

OTD Parcel

1. Gates –
 - a. The entrance gate needs barbed wire installed on it. A small gap between two posts needs to be closed.
We recommend hiring a fence contractor. Tidal Influence staff will find contractors and get estimates for this work.
 - b. During patrol the LCWA's lock was excluded from the daisy chain. **We recommend adding a longer chain to allow the lessee greater ease of use and lower likelihood of a repeat occurrence. Additionally the 'notice' sign can be revise/renewed due to fading. Tidal Influence will send LCWA staff a purchase request for the new chain, as well as revise/renew the signage.** (See photos)
2. Trails – Okay, a rough path was created along the perimeter of the property to allow for patrols and ease of trash removal.
3. Fences –
 - a. Barbed wire needs to be replaced on the portion of the fence line that is nearest the entrance gate.
We recommend hiring a fence contractor. Tidal Influence staff will find contractors and get estimates for this work.
(See photos)
4. Homeless – A substantial amount of litter, trash, and stolen materials still exist on-site, with additional trash added since last months patrol. A rough path has been cleared to allow easier access for the removal of trash. **We recommend this trash be disposed of immediatley by the LCWA's homeless contractor.** (See photos)

Zedler Marsh

5. Gates – OK
6. Trails – OK
7. Fences – A fence near the 2nd Street entrance was breached and a fisherman was seen parked at the entrance multiple times during September. The DWP security was notified and the hole was patched. (See photos)
8. Homeless – OK
9. Other –
 - a. A number of golf balls have been found on site, likely from the same citizens that were seen hitting golf balls onto the Bryant Lease West parcel from the levee. This is a major safety hazard. **We recommend working with the LCWA's homeless contractor to resolve the encampments around the property in order to reduce the likelihood of this kind of dangerous activity continuing.** (See photo)

- b. Note: A number of members of the public have been observed coming on site and directed to leave by staff during the month. **We recommend updating the signage at the entrance gate to reduce the amount of unapproved visitors once the property has been acquired.**

State Lands Parcel

10. Gates – Staff notified that the lock on the entrance gate by the Hellman property entrance may be compromised. **We recommend changing this lock. The replacement will be completed by Tidal Influence staff.**
11. Trails – OK
12. Fences –
- a. Vegetation is growing out of control along the driveway fence line. **We recommend that this vegetation be cleared in order to assure security of the site. Tidal Influence staff will remediate this within the coming month.**
13. Homeless – OK

Hellman

14. Gates – OK
15. Trails – Trails were cleared for this month's land tour.
16. Fences –
- a. After a few months of monitoring a few fence line sections near Gum Grove Park, the fence breaches appear to be widened and need to be patched or repaired. (See photos) **We recommend hiring a fence contractor. Tidal Influence staff will find contractors and get estimates for this work.**
17. Homeless –
- a. **A homeless trespasser** was caught inside of and going through the facilities while giving an introduction to a visiting college class. The trespasser was using excess materials stored outside of the container to build shelter and a fire. During the patrol tracks showed the trespasser running through vegetation and all around the property. No materials were stolen but the lockbox has been compromised. (See photos) **The lockbox will be reset and relocated by Tidal Influence Staff. We recommend encampments like this one be remediated by the LCWA's Homeless contractor as quickly as possible to reduce the possibility of additional encampments showing up. This is a major safety hazard to visitors, staff, and wildlife.**
18. Other – A number of trespassers have been observed on our wildlife cameras. This activity is usually heightened during the summer months. (See photos) **We recommend continued coordination with SBPD to increase/maintain site patrols.**

Bryant Lease West

19. Gates – All the locks and chains for the gates along levee have been removed and all gates are open. (See photos) **We recommend LCWA staff meeting with LA County to determine a new approach to securing this property. We recommend that lock boxes are installed on the gates.**
20. Trails – OK
21. Fences –
- a. Large breach along the East side of the property. (See photo) **We recommend hiring a fence contractor. Tidal Influence staff will find contractors and get estimates for this work.**
- b. Small breach along the West side of the property on the entrance gate. (See photo) **We recommend hiring a fence contractor. Tidal Influence staff will find contractors and get estimates for this work.**
22. Homeless – **2 ACTIVE ENCAMPMENTS** exist on this property, one of which has been reported since June 2016. Trash is accumulating near the encampments and needs to be removed. One of the encampments has been cleared. (See Photos) **We recommend that these remaining encampments be immediately remediated and the trash be removed by the LCWA's Homeless contractor.**
23. Other – Citizens (likely from the encampments) were observed hitting golf balls into the property from the levee (see photo). **This is a major safety hazard to lessee's, visitors, staff, and wildlife. We recommend working with the LCWA's homeless contractor to resolve this issue.**

Map

The photos of the issues and observations detailed above are labeled by number. The number on the map below indicates the location of these issues and observations.



OTD Parcel



Locked out of daisy chain

OTD Parcel



Trash along roadside and up along hilltop

OTD Parcel



Fencing in need
of upgrades

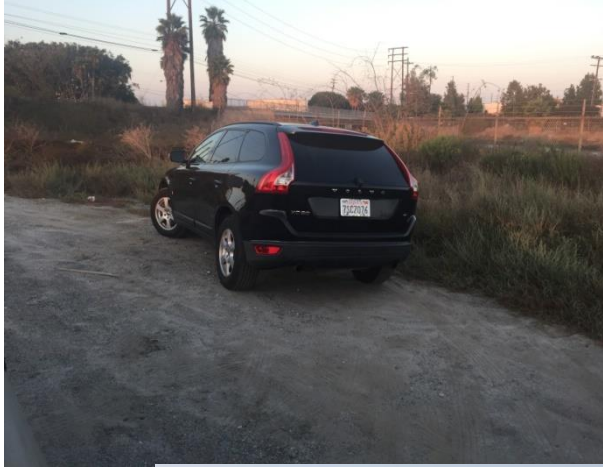
Zedler

**Golf balls being hit onto
property from levee**



Fisherman parked at
entrance and seen fishing

Zedler



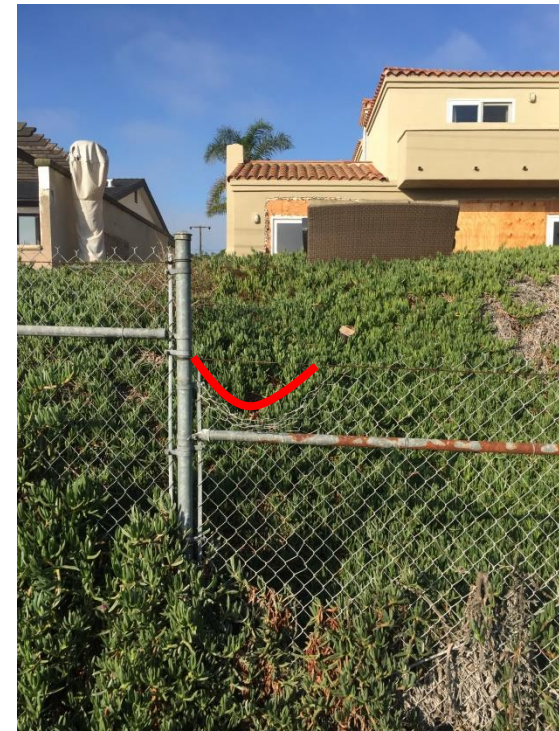
Fence breach reported to DWP & they patched

Hellman



Two Fence lines segments bent and warped down

Fence warped, likely trespasser entrance behind house under construction and/or vacant (not for sale online)



Hellman

Homeless Encampment & Facilities Break-in



Footprints running towards
& through native vegetation



Bryant Lease West



Bryant Lease West

Encampment #1



This encampment has been reported for over 15 months and has not been remediated

Bryant Lease West

- Encampment #2



This encampment appeared to be remediated during September patrol

Bryant Lease West

Encampment #3

August



Box of golf balls

Encampment #3 during
September Patrol



LOS CERRITOS WETLANDS STEWARDSHIP PROGRAM SUMMARY REPORT

JULY 16TH, 2017 – OCTOBER 15TH, 2017

Los Cerritos Wetlands Authority

Nature Walks

Turtle Trek, Raptor Ramble, Heron Hike

Nature walks supported by the Los Cerritos Wetlands Land Trust continue to be a significant draw for the community (Page 2). People from all over the California coast line participated in nature walks in August, September and October. In the last 3 nature walks, approximately 80 community members have enjoyed hiking through the wild and urban terrain of Los Cerritos Wetlands, catching rare glimpses of its wildlife and natural beauty. Each walk begins at 1st street and Pacific Coast Highway in Seal Beach at 8:00am every 1st Saturday of the month. Members of the public are welcome to join in on the 3 different tours around the wetlands. For more information about each tour, please contact: elizabeth@lcwlandtrust.org.

Restoration Events

Community volunteers participated in public restoration events and trash cleanups at Zedler Marsh in Los Cerritos Wetlands between August and October of this year (Page 3). During these months, 140 community volunteers contributed 250 volunteer hours to remove 300 pounds of non-native plants and 175 pounds of trash and planted 135 native plants around the Zedler Marsh restoration areas. The Stewardship Program also hosted 1 university service-learning field trip and 1 high school service-learning field trips for 56 students who contributed 116 hours to propagate 305 native wetlands plants in the growing space facility (Page 2). The Stewardship Program also supported college intern Crew Days on every Friday of each month from July 16 – October 15. Crew Days accomplished many goals for the Stewardship Program, the developing Zedler Marsh Trails Project, the Tarplant project, the Zedler Marsh native plant growspace and preparing for the Zedler Marsh Trails Grant Opening Event. Crew Day college students contributed 300 hours during this quarter to propagate 1,100 native plants in the growspace facility, remove 3,500 lbs of nonnative vegetation, plant 50 native plants and enhance the Zedler Marsh trail system to prepare for the trails grand opening event. **Restoration events, service-learning field trips and intern Crew Days contributed more than 660 volunteer hours and nearly \$16,000.00 in in-kind services between July and October.** To volunteer for an event, meet at 1st street and Pacific Coast Highway in Seal Beach at 10:30am on the 1st Saturday of the month. To request a restoration or education event for your group or organization, please contact: iwanttohelp@tidalinfluence.com.

Special Events

The LCWA Stewardship Program hosted a highly successful grand opening event to unveil the completed Zedler Marsh Trails on September 30th, 2017 (Page 4). This event celebrated the first-ever publicly accessible trail system in Los Cerritos Wetlands. Many LCWA partners and supporters contributed and attended the event. More than 150 people attended the grand opening event and explored the Zedler Marsh Trails for the first time. The Stewardship Program would not be able to celebrate this milestone without the many partners, supporters and volunteers who have contributed significantly over the last eight years to this site. Thank you to all who have contributed to this conservation effort!



LAND TOURS IN LOS CERRITOS WETLANDS



HIGH SCHOOL SERVICE – LEARNING PROGRAM WITH PORT OF LOS ANGELES HIGH SCHOOL

y Report

Los



HABITAT RESTORATION EVENTS AND TRASH CLEANUPS IN LOS CERRITOS WETLANDS



COLLEGE INTERN CREW DAY ACTIVITY

Zedler Marsh Trails Grand Opening Event!



El Dorado Audubon Society
California Chapter of The National Audubon Society

Los Cerritos Wetlands Authority LCWA Nature/Bird Walks
January to October 2017 (November 2, 2017)

Summary

El Dorado Audubon has been leading nature/bird walks for the Los Cerritos Wetlands Authority since 2009. As a local chapter of the National Audubon Society, El Dorado Audubon's mission is conservation of native birds and their habitats and education of members and the community. Los Cerritos Wetlands is an Audubon Important Bird Area. Our walks encompass the importance of wetlands and Los Cerritos in particular. We recognize the connectivity of the wetlands with the San Gabriel River, Seal Beach National Wildlife Refuge, El Dorado Nature Center and other Orange Coast Wetlands. We continue to draw community members from throughout Southern California and from as far away as Bakersfield, Nevada, Texas, Wisconsin and Minnesota.

Guest speakers on our walks covered a variety of topics: Bays and Estuaries of Southern California, Birds of the Pacific Flyway, sea turtles, butterflies, native and non-native wildflowers.

Effective July 2017 a monthly walk to Zedler Marsh was added to the monthly walk on the Hellman lowlands

Volunteer Hours

January through July 2017: 665
Hours at \$22.00/hour: \$14,630

Highlights by Month – January through October

January

Season rains from October through early January left ponds and ponding on the wetlands. Highlights of species observed included: Green-winged Teal, American Wigeon and Northern Pintail using the ponds on site. A total of 43 avian species

were seen including raptors, shorebirds, herons, egrets, songbirds and sparrows.

February

Seasonal rainfall for October through early February was over 15 inches resulting in lots of on the entire site. Highlights included a flock of Western Meadowlarks, Northern Harrier and Orange-crowned Warbler for a total of 33 species.

March

The sky was cloudy and fog rolled in creating a magical wonderland. Highlights included Green-winged Teal the ponds and a pair of Western Bluebirds for a total of 24 species.

April

Beautiful displays of native and non-native wildflowers and butterflies galore!

Highlights included a pair of Gadwall, Northern Rough-winged Swallow, Hooded Oriole and Belding's Savannah Sparrow for a total of 23 avian species.

May

Birders enjoyed a cool spring morning with beautiful displays of native and non-native wildflowers. Highlights included good looks at shorebirds, Cassin's Kingbird, Northern Rough-winged Swallow and Barn Swallow for a total of 25 avian species

June

Birders experienced a cool morning with a heavy marine layer and a light drizzle of rain. Most observations were made during the last half hour of the walk as the heavy marine layer lifted. Highlights included Northern Harrier, Black-necked Stilt, Common Yellowthroat and Belding's Savannah Sparrow for a total of 20.

July

Participants enjoyed a warm summer morning on Hellman lowlands with good looks at Southern Tarplant and other native wildflowers in full bloom. Highlights included White-tailed Kite, Belding's Savannah Sparrow, and Killdeer for a total of 22 avian species observed. New walk on Zedler Marsh species count 11 including herons, egrets, gulls, and nesting Hooded Orioles.

August

Hellman lowlands – White-tailed Kite, Cooper’s Hawk, American Kestrel, goldfinch were the summer morning highlights with 23 species seen. Zedler Marsh -- Blue-grey Gnatcatchers, Bushtits, Great Blue Heron, Great Egret and Double-crested Cormorants for a total of 10 species on a hot summer afternoon.

September

Hellman lowlands – American Kestrel, herons, egrets, and goldfinches for a total of 24 species. Zedler Marsh walk birders Double-crested Cormorants, Brown Pelican, Blue-grey Gnatcatchers, Cassin’s Kingbird and American Kestrel for a total of 15 species.

October

Small flocks of Canada Goose seen flying from the Seal Beach National Wildlife Refuge and landing in the OC Retention Basin. Great looks at Northern Harrier, Red-shouldered Hawk, shorebirds, House Wren, White-crowned Sparrow and Belted Kingfisher on a clear morning for a total of 23 species.



Figure 1: Great Blue Heron, Oct. 14, 2017. PC- Cindy Crawford



Figure 2: Goldfinch, Oct. 14, 2017. PC: Cindy Crawford



Figure 3: Red-Shouldered Hawk, Oct. 14, 2017. PC: Cindy Crawford



Figure 4: Left to right- Willet, Greater Yellowlegs, Snowy Egret, Oct. 14, 2017. PC: Cindy Crawford



Figure 5: Turkey Vulture, Oct. 14, 2017. PC: Cindy Crawford

Avian Species observed January through October 2017

Los Cerritos Wetlands Hellman property, Orange, California, US

Jan 14, 2017 8:00 AM - 10:00 AM

43 species (+8 other taxa)

Canada Goose 7
American Wigeon 59
Mallard 12
Northern Pintail 24
Green-winged Teal 12
teal sp. 25
duck sp. 10
Double-crested Cormorant 12
Great Blue Heron 2
Great Egret 2
Snowy Egret 3
Osprey 1
Northern Harrier 1
Cooper's Hawk 1
Red-tailed Hawk 2
American Coot 5
Black-bellied Plover 1
Killdeer 6
Western Sandpiper 1
peep sp. 15
Spotted Sandpiper 1
Willet 16
shorebird sp. 8
Ring-billed Gull 1
Western Gull 17
gull sp. 32
Rock Pigeon (Feral Pigeon) 1
Eurasian Collared-Dove 1
Mourning Dove 7
Anna's Hummingbird 2
Allen's Hummingbird 2
Belted Kingfisher 1
American Kestrel 2
Black Phoebe 3
Say's Phoebe 6
Cassin's Kingbird 2
American Crow 5
Tree Swallow 1
swallow sp. 1
Northern Mockingbird 2
Common Yellowthroat 2

Yellow-rumped Warbler (Audubon's) 3
White-crowned Sparrow 28
Savannah Sparrow 9
Savannah Sparrow (Belding's) 6
Song Sparrow 7
sparrow sp. 23
Red-winged Blackbird 2
House Finch 2
Lesser Goldfinch 18
House Sparrow 8

View this checklist online at <http://ebird.org/ebird/view/checklist/S33672426>

Los Cerritos Wetlands Hellman property, Orange, California, US
Feb 11, 2017 8:00 AM - 10:00 AM
33 species (+5 other taxa)

Canada Goose 25
Mallard 7
Double-crested Cormorant 6
Great Blue Heron 3
Great Egret 3
Snowy Egret 2
Osprey 1
Northern Harrier 1
Red-tailed Hawk 2
American Coot 40
Killdeer 4
Least Sandpiper 1
peep sp. 15
Greater Yellowlegs 1
Willet 12
gull sp. 85
Mourning Dove 17
Anna's Hummingbird 1
Allen's Hummingbird 3
hummingbird sp. 2
Belted Kingfisher 1
American Kestrel 1
Black Phoebe 2
Cassin's Kingbird 3
American Crow 30
House Wren 1
Northern Mockingbird 1
European Starling 5
Orange-crowned Warbler 1
Common Yellowthroat 2
warbler sp. (Parulidae sp.) X

White-crowned Sparrow 5
Savannah Sparrow (Belding's) 1
Song Sparrow 1
Western Meadowlark 14
House Finch 3
Lesser Goldfinch 1
Acanthis/Spinus sp. 5

View this checklist online at <http://ebird.org/ebird/view/checklist/S34305408>

Los Cerritos Wetlands Hellman property, Orange, California, US
Mar 11, 2017 8:00 AM - 10:00 AM
24 species (+2 other taxa)

Mallard 7
Green-winged Teal 13
Great Blue Heron 3
Great Egret 2
Snowy Egret 5
Cooper's Hawk 1
Red-tailed Hawk 2
Killdeer 3
peep sp. 25
Willet 7
Mourning Dove 17
Allen's Hummingbird 3
American Kestrel 1
Merlin 1
Black Phoebe 3
Cassin's Kingbird 2
American Crow 5
House Wren 2
Western Bluebird 2
Northern Mockingbird 1
White-crowned Sparrow 10
Song Sparrow 2
Red-winged Blackbird 2
Western Meadowlark 14
House Finch 5
Acanthis/Spinus sp. 3

View this checklist online at <http://ebird.org/ebird/view/checklist/S35223071>

Los Cerritos Wetlands Hellman property, Orange, California, US
Apr 8, 2017 8:00 AM - 10:00 AM
23 species (+7 other taxa)

Gadwall 2

Mallard 7
duck sp. 23
Double-crested Cormorant 15
Great Blue Heron 3
Great Egret 2
Snowy Egret 14
Killdeer 3
Least Sandpiper 1
peep sp. 15
Willet 2
gull sp. 27
Mourning Dove 35
Allen's Hummingbird 5
American Kestrel 2
Cassin's Kingbird 2
American Crow 1
Northern Rough-winged Swallow 3
swallow sp. 15
House Wren 2
Northern Mockingbird 3
Common Yellowthroat 3
White-crowned Sparrow 15
Savannah Sparrow (Belding's) 2
sparrow sp. 45
Red-winged Blackbird 2
Hooded Oriole 1
House Finch 26
House/Purple Finch 1

View this checklist online at <http://ebird.org/ebird/view/checklist/S35856809>

Los Cerritos Wetlands Hellman property, Orange, California, US
May 13, 2017 8:00 AM - 10:00 AM
25 species (+8 other taxa)

Mallard 5
duck sp. 9
Double-crested Cormorant 5
Great Blue Heron 3
Great Egret 1
Snowy Egret 5
Cooper's Hawk 1
Red-tailed Hawk 1
Killdeer 2
Willet 3
shorebird sp. 7
gull sp. 12
Forster's Tern 4
tern sp. 7
Mourning Dove 27

Allen's Hummingbird 2
hummingbird sp. 7
American Kestrel 1
Black Phoebe 3
Cassin's Kingbird 2
American Crow 3
Northern Rough-winged Swallow 5
Barn Swallow 3
swallow sp. 35
House Wren 3
Northern Mockingbird 2
Common Yellowthroat 5
Song Sparrow 3
sparrow sp. 15
Red-winged Blackbird (Red-winged) 2
Hooded Oriole 1
House Finch 35
Acanthis/Spinus sp. 3

View this checklist online at <http://ebird.org/ebird/view/checklist/S37647314>

Los Cerritos Wetlands Hellman property, Orange, California, US
Jun 10, 2017 8:00 AM - 10:00 AM
20 species (+5 other taxa)

Double-crested Cormorant 5
Great Blue Heron 2
Snowy Egret 3
Northern Harrier 1
Black-necked Stilt 1
gull sp. 12
Forster's Tern 2
tern sp. 5
Mourning Dove 8
Allen's Hummingbird 1
hummingbird sp. 3
Black Phoebe 1
American Crow 3
Northern Rough-winged Swallow 3
Barn Swallow 5
swallow sp. 12
Bushtit 8
House Wren 2
Northern Mockingbird 3
Common Yellowthroat 11
Savannah Sparrow (Belding's) 10
Song Sparrow 2
Red-winged Blackbird 2
House Finch 25
Acanthis/Spinus sp. 2

View this checklist online at <http://ebird.org/ebird/view/checklist/S37647177>

Los Cerritos Wetlands Hellman property, Orange, California, US

Jul 8, 2017 8:00 AM - 10:00 AM

22 species (+2 other taxa)

Double-crested Cormorant 3
Great Blue Heron 2
Snowy Egret 2
Black-crowned Night-Heron 1
White-tailed Kite 1
Red-tailed Hawk 1
Killdeer 2
Sanderling 2
Rock Pigeon (Feral Pigeon) 3
Mourning Dove 17
hummingbird sp. 2
American Kestrel 1
American Crow 5
Northern Rough-winged Swallow 25
Barn Swallow 3
swallow sp. 35
House Wren 2
Northern Mockingbird 1
Common Yellowthroat 7
Savannah Sparrow (Belding's) 5
Red-winged Blackbird (Red-winged) 2
Hooded Oriole 1
House Finch 37
Lesser Goldfinch 2

View this checklist online at <http://ebird.org/ebird/view/checklist/S38104247>

Los Cerritos Wetlands Hellman property, Orange, California, US

Aug 12, 2017 8:00 AM - 10:00 AM

23 species (+6 other taxa)

Double-crested Cormorant 2
Great Blue Heron 5
Great Egret 2
Snowy Egret 7
White-tailed Kite 1
Cooper's Hawk 1
Red-tailed Hawk 1
Buteo sp. 1
Killdeer 5
peep sp. 5
Greater Yellowlegs 1

Willet 2
gull sp. 23
tern sp. 5
Mourning Dove 37
Allen's Hummingbird 5
hummingbird sp. 3
Belted Kingfisher 1
American Kestrel 2
Black Phoebe 3
Say's Phoebe 1
American Crow 7
Bushtit 3
House Wren 3
European Starling 5
Common Yellowthroat 5
Savannah Sparrow (Belding's) 3
Song Sparrow 3
Acanthis/Spinus sp. 23

Los Cerritos Wetlands Hellman property, Orange, California, US
Sep 9, 2017 8:00 AM - 10:00 AM
24 species (+6 other taxa)

Double-crested Cormorant 5
Great Blue Heron 3
Great Egret 2
Snowy Egret 5
Turkey Vulture 1
Northern Harrier 1
Cooper's Hawk 1
Red-shouldered Hawk 2
Killdeer 2
peep sp. 5
Willet 1
shorebird sp. 12
gull sp. 15
tern sp. 3
Rock Pigeon (Feral Pigeon) 15
Mourning Dove 35
Allen's Hummingbird 5
hummingbird sp. 3
American Kestrel 2
Black Phoebe 5
Say's Phoebe 1
Cassin's Kingbird 2
American Crow 3

House Wren 3
Northern Mockingbird 3
Common Yellowthroat 5
Savannah Sparrow (Belding's) 5
Song Sparrow 3
House Finch 55
Acanthis/Spinus sp. 23

Los Cerritos Wetlands Hellman property, Orange, California, US
Oct 14, 2017 8:00 AM - 10:00 AM
23 species (+3 other taxa)

Canada Goose 65
Double-crested Cormorant 2
Brown Pelican 1
Great Blue Heron 1
Great Egret 2
Snowy Egret 1
Turkey Vulture 1
Northern Harrier 1
Red-shouldered Hawk 1
Killdeer 2
Greater Yellowlegs 1
Willet 1
hummingbird sp. 4
Belted Kingfisher 1
American Kestrel 1
Black Phoebe 2
Say's Phoebe 1
American Crow 2
House Wren 4
Northern Mockingbird 1
European Starling 3
White-crowned Sparrow 3
Song Sparrow 1
sparrow sp. 17
House Finch 75
Acanthis/Spinus sp. 1

Los Cerritos Wetlands Zedler Marsh, Los Angeles, California, US
Jul 23, 2017 3:00 PM - 5:00 PM
11 species (+4 other taxa)

cormorant sp. 5
Great Egret 2
Snowy Egret 3
gull sp. 5
Least Tern 1

tern sp. 3
Rock Pigeon (Feral Pigeon) 2
Mourning Dove 13
Belted Kingfisher 1
American Crow 2
Bushtit 15
Hooded Oriole 2
House Finch 35
Lesser Goldfinch 2
Spinus sp. (goldfinch sp.) 5

Los Cerritos Wetlands Zedler Marsh, Los Angeles, California, US
Aug 27, 2017 3:00 PM - 5:00 PM
10 species (+3 other taxa)

Double-crested Cormorant 2
Great Blue Heron 2
Great Egret 1
Snowy Egret 5
gull sp. 17
tern sp. 7
Mourning Dove 5
American Kestrel 1
American Crow 3
Common Yellowthroat 2
Song Sparrow 1
House Finch 35
Spinus sp. (goldfinch sp.) 5

Los Cerritos Wetlands Zedler Marsh, Los Angeles, California, US
Sep 24, 2017 3:00 PM - 5:00 PM
15 species

Double-crested Cormorant 9
Brown Pelican 1
Snowy Egret 2
Greater Yellowlegs 1
Rock Pigeon (Feral Pigeon) 2
Eurasian Collared-Dove 1
Mourning Dove 13
Belted Kingfisher 2
American Kestrel 2
Cassin's Kingbird 2
Blue-gray Gnatcatcher 6
Northern Mockingbird 2
European Starling 100
Red-winged Blackbird 1
House Finch 2

July Sea and Sage Audubon Bird Counts : Hellman Property

Species	Count	Location	Observation date	Start Time	Duration
Snowy Egret	1	Phase2/Hellman	27-Jul-17	8:00 AM	2 hour(s)
Cooper's Hawk	3	Phase2/Hellman	27-Jul-17	8:00 AM	2 hour(s)
Mourning Dove	6	Phase2/Hellman	27-Jul-17	8:00 AM	2 hour(s)
Allen's Hummingbird	3	Phase2/Hellman	27-Jul-17	8:00 AM	2 hour(s)
Black Phoebe	5	Phase2/Hellman	27-Jul-17	8:00 AM	2 hour(s)
Ash-throated Flycatcher	1	Phase2/Hellman	27-Jul-17	8:00 AM	2 hour(s)
American Crow	2	Phase2/Hellman	27-Jul-17	8:00 AM	2 hour(s)
Barn Swallow	6	Phase2/Hellman	27-Jul-17	8:00 AM	2 hour(s)
Cliff Swallow	1	Phase2/Hellman	27-Jul-17	8:00 AM	2 hour(s)
Bushtit	7	Phase2/Hellman	27-Jul-17	8:00 AM	2 hour(s)
House Wren	1	Phase2/Hellman	27-Jul-17	8:00 AM	2 hour(s)
Common Yellowthroat	4	Phase2/Hellman	27-Jul-17	8:00 AM	2 hour(s)
Savannah Sparrow	1	Phase2/Hellman	27-Jul-17	8:00 AM	2 hour(s)
Savannah Sparrow (Belding's)	1	Phase2/Hellman	27-Jul-17	8:00 AM	2 hour(s)
Song Sparrow	2	Phase2/Hellman	27-Jul-17	8:00 AM	2 hour(s)
House Finch	121	Phase2/Hellman	27-Jul-17	8:00 AM	2 hour(s)
American Goldfinch	17	Phase2/Hellman	27-Jul-17	8:00 AM	2 hour(s)

Sea and Sage Audubon Bird Count: Hellman Property

Species	Count	Location	Observation date	Start Time	Duration
Great Blue Heron	4	Phase2/Hellman	24-Aug-17	8:00 AM	2 hour(s)
Great Egret	1	Phase2/Hellman	24-Aug-17	8:00 AM	2 hour(s)
Snowy Egret	2	Phase2/Hellman	24-Aug-17	8:00 AM	2 hour(s)
Turkey Vulture	1	Phase2/Hellman	24-Aug-17	8:00 AM	2 hour(s)
White-tailed Kite	2	Phase2/Hellman	24-Aug-17	8:00 AM	2 hour(s)
Red-tailed Hawk	1	Phase2/Hellman	24-Aug-17	8:00 AM	2 hour(s)
Killdeer	2	Phase2/Hellman	24-Aug-17	8:00 AM	2 hour(s)
peep sp.	1	Phase2/Hellman	24-Aug-17	8:00 AM	2 hour(s)
Western Gull	1	Phase2/Hellman	24-Aug-17	8:00 AM	2 hour(s)
Rock Pigeon (Feral Pigeon)	9	Phase2/Hellman	24-Aug-17	8:00 AM	2 hour(s)
Mourning Dove	23	Phase2/Hellman	24-Aug-17	8:00 AM	2 hour(s)
Anna's Hummingbird	2	Phase2/Hellman	24-Aug-17	8:00 AM	2 hour(s)
Allen's Hummingbird	9	Phase2/Hellman	24-Aug-17	8:00 AM	2 hour(s)
hummingbird sp.	1	Phase2/Hellman	24-Aug-17	8:00 AM	2 hour(s)
American Kestrel	3	Phase2/Hellman	24-Aug-17	8:00 AM	2 hour(s)
Black Phoebe	3	Phase2/Hellman	24-Aug-17	8:00 AM	2 hour(s)
Ash-throated Flycatcher	1	Phase2/Hellman	24-Aug-17	8:00 AM	2 hour(s)
American Crow	8	Phase2/Hellman	24-Aug-17	8:00 AM	2 hour(s)
Barn Swallow	4	Phase2/Hellman	24-Aug-17	8:00 AM	2 hour(s)
House Wren	7	Phase2/Hellman	24-Aug-17	8:00 AM	2 hour(s)
European Starling	1	Phase2/Hellman	24-Aug-17	8:00 AM	2 hour(s)
Common Yellowthroat	12	Phase2/Hellman	24-Aug-17	8:00 AM	2 hour(s)
Savannah Sparrow (Belding's)	2	Phase2/Hellman	24-Aug-17	8:00 AM	2 hour(s)
Song Sparrow	6	Phase2/Hellman	24-Aug-17	8:00 AM	2 hour(s)
Blue Grosbeak	2	Phase2/Hellman	24-Aug-17	8:00 AM	2 hour(s)
House Finch	99	Phase2/Hellman	24-Aug-17	8:00 AM	2 hour(s)
Lesser Goldfinch	3	Phase2/Hellman	24-Aug-17	8:00 AM	2 hour(s)

Sea and Sage Audubon Bird Count: Hellman Property

Species	Count	Location	Observation date	Start Time
Double-crested Cormorant	3	Phase2/Hellman	26-Oct-17	8:00 AM
Great Egret	2	Phase2/Hellman	26-Oct-17	8:00 AM
Osprey	1	Phase2/Hellman	26-Oct-17	8:00 AM
Cooper's Hawk	1	Phase2/Hellman	26-Oct-17	8:00 AM
Mourning Dove	16	Phase2/Hellman	26-Oct-17	8:00 AM
Anna's Hummingbird	2	Phase2/Hellman	26-Oct-17	8:00 AM
Allen's Hummingbird	3	Phase2/Hellman	26-Oct-17	8:00 AM
American Kestrel	2	Phase2/Hellman	26-Oct-17	8:00 AM
Black Phoebe	4	Phase2/Hellman	26-Oct-17	8:00 AM
Say's Phoebe	2	Phase2/Hellman	26-Oct-17	8:00 AM
Cassin's Kingbird	3	Phase2/Hellman	26-Oct-17	8:00 AM
American Crow	2	Phase2/Hellman	26-Oct-17	8:00 AM
Bushtit	6	Phase2/Hellman	26-Oct-17	8:00 AM
House Wren	4	Phase2/Hellman	26-Oct-17	8:00 AM
Northern Mockingbird	2	Phase2/Hellman	26-Oct-17	8:00 AM
European Starling	5	Phase2/Hellman	26-Oct-17	8:00 AM
Common Yellowthroat	5	Phase2/Hellman	26-Oct-17	8:00 AM
Yellow-rumped Warbler (Audubon's)	12	Phase2/Hellman	26-Oct-17	8:00 AM
White-crowned Sparrow	55	Phase2/Hellman	26-Oct-17	8:00 AM
Savannah Sparrow (Savannah)	2	Phase2/Hellman	26-Oct-17	8:00 AM
Song Sparrow	4	Phase2/Hellman	26-Oct-17	8:00 AM
Lincoln's Sparrow	6	Phase2/Hellman	26-Oct-17	8:00 AM
California Towhee	2	Phase2/Hellman	26-Oct-17	8:00 AM
Western Meadowlark	1	Phase2/Hellman	26-Oct-17	8:00 AM
House Finch	38	Phase2/Hellman	26-Oct-17	8:00 AM
Lesser Goldfinch	2	Phase2/Hellman	26-Oct-17	8:00 AM
House Sparrow	2	Phase2/Hellman	26-Oct-17	8:00 AM
Northern Red Bishop	5	Phase2/Hellman	26-Oct-17	8:00 AM