

Los Cerritos Wetlands Authority

Date: August 3, 2017

To: Governing Board Members

From: Mark Stanley, Executive Officer

Subject: Item 5: Status Report on Workplan Implementation including Los Cerritos Wetlands Stewardship Program and Los Cerritos Wetlands Conceptual Restoration Plan.

BACKGROUND: At the September 19, 2006 meeting, the Board adopted the Workplan set forth below. An updated description of the status of each workplan item is detailed in the following table:

| August 2017 WORKPLAN STATUS UPDATE | | |
|--|--|---|
| LCWA Projects | | |
| Task | Description | Status |
| Potential Funding Sources | | |
| State Water Board Once-through Cooling Interim Mitigation Funding will depend on mitigation fees collected | The Once-Through Cooling (OTC) Policy requires owners or operators of existing power plants to implement measures to mitigate interim impingement and entrainment impacts resulting from their cooling water intake structures. The interim mitigation period commenced on October 1, 2015 and continues up to and until owners or operators achieve their final compliance deadlines as outlined in the OTC Policy. | Funding will depend on the mitigation fees collected by the State Coastal Conservancy |
| Wetlands Recovery Project In-Lieu Fee Program Progress Report Funding will depend on mitigation fees collected | Implementation of the proposed Program will provide a potential funding source to implement projects that fulfill the SCWRP goals, thereby generating substantial ecological benefits within the Program's Service Area, while also providing a cooperative mechanism for Compensatory Mitigation that addresses the needs of multiple federal, state, and local agencies. | Funding will depend on mitigation fees collected http://scwrp.org/ |

| Task | Description | Status |
|---|--|---|
| Potential Funding Sources | | |
| Water Quality, Supply, and Infrastructure Improvement Act of 2014 (Proposition 1) | Voters, would authorize \$7.545 billion dollars in general obligation bonds to fund ecosystems and watershed protection and restoration, water supply infrastructure projects, including surface and groundwater storage, and drinking water protection. | Funding is dependent on State Agency Funding Grant cycles http://resources.ca.gov/grants/ http://bondaccountability.resources.ca.gov/p1.aspx |
| Capital Projects & Initiatives | | |
| Los Cerritos Wetlands Planning and Restoration Project to complete the environmental review of the CRP per CEQA | Determine if the CEQA document should be a Programmatic or Project Specific level analysis. | Acquiring funds to conduct CEQA analysis to engage an environmental consultant contract. |
| Los Cerritos Wetlands Acquisition of the Bryant Properties | Complete the acquisition of all property owned by the Bryant Family for an addition of 18 acres along the frontage of 2 nd Street- Westminster Avenue added to the property preserved for purity as public. | Staff and Legal Counsel are working with Steve Bryant and Kevin Brazil to complete the final Appraisal Report for a secondary state review for the acquisition of Assessor Parcel Nos 7237-020-053; 054. |
| Los Cerritos Wetlands LLC Restoration and Oil Consolidation Project | Review and provide comments on the Draft EIR. Continue to track all other aspects of the project including the mitigation bank and entitlement process. | Draft EIR was just completed and released for public comment in July 2017. The LCWA's team of consultants will provide comments on the Draft EIR directly to the applicant. The mitigation bank prospectus has been reviewed by the agencies after no public comment was received. The applicant continues negotiations with the agencies and is targeting the end of the year to have a Draft BEI submitted. |

| Option Agreement to transfer properties between Los Cerritos Wetlands LLC(LCWLLC) and the LCWA | LCWLLC and the LCWA executed an option agreement that provides for the exchange of real property. Agreement was signed on 9/2/16 to transfer the LCWA APN 7237-019-809, approximately 5.11 acres for the LCWLLC property described as APNs 7237-017-010; 7237-017-011; 7237-017-012; 7237-0217-013; 7237-017-014; 7237-017-019; 7237-017-805; 7237-017-806; 7237-017-807; 7237-017-808;7237-017-809 approximately 154 acres. | The LCWA received the option agreement funds which will be used to hire consultants to review technical studies. |
|--|--|---|
| Task | Description | Status |
| Capital Projects & Initiatives | | |
| LCWA Mitigation Policy | Staff will require consultant services in order to assist in the development of the mitigation policy and currently the FY16/17 Budget does not have any unrestricted funds to support authorizing a consultant contract. | The LCWA would require additional funds from its joint partners in order to provide the financial support for authorizing a consultant contract for services and development of the mitigation policy. The cost to develop the mitigation policy would range from \$50,000 to \$100,000. These cost estimates were determined by researching various non-profits, regulatory agencies and other local and state agencies whom have completed similar and comparable mitigation policies. |
| DWP Parcel (PCH) at Pacific Coast Highway | This site poses significant opportunities for enhancing public access to the eastern side of the Los Cerritos Wetlands area adjoining the San Gabriel River. | Recently the LCWA was made aware the City of Los Angeles would replace the existing fence-line with an 8-ft tall, tight-meshed, chain-link fence with razor wire around the entire Haynes Cooling Channel. This fencing project will impact over 2,000 feet of LCWA fence line, including sections that run along sensitive habitat at Zedler Marsh. Staff is working with DWP to outline concerns regarding the installation of the fence and possibly installing a fence that is more sensitive to the habitat. |
| City of Long Beach Pending Environmental Documents | | |
| City of Long Beach Southeast Area Specific Plan (SEASP) | The City of Long Beach continues to work on the Southeast Area Specific Plan which covers approximately 1,500-acres of southeast Long Beach. http://www.lbds.info/seadip_update/ | The Draft Environmental Impact Report and the public review period was completed on September 19, 2016. Staff continues tracking this planning effort as it progresses. Staff main concern is the final road development to complete Shopkeeper Road. |

| Los Cerritos Wetlands LLC (LCWLLC) Los Cerritos Wetlands Restoration and Oil Consolidation Project | <p>The project is comprised of four sites located at: 6422 E. 2nd Street (LCW LLC Oil Field Site); 6701 E. Pacific Coast Highway (Pumpkin Patch site); northeast corner of Studebaker Road and 2nd Street (LCWA OTD Parcel); and 2nd Street and Shopkeeper Road (City-Property site) in the City of Long Beach.</p> <p>http://www.lbds.info/planning/environmental_planning/environmental_reports.asp</p> | The project would implement a comprehensive wetlands restoration project which will restore a privately-owned oil field in the City of Long Beach through creation of a wetlands mitigation bank. The project includes the relocation of certain oil facilities currently located on the LCWLLC Field and City-owned property to two off-site properties (LCWA OTD Parcel and Pumpkin Patch site). LCWLLC is currently analyzing various significant impacts such as the completion of Phase I and II, archaeological, biological assessments. |
|--|--|--|
| Task | Description | Status |
| City of Long Beach Pending Environmental Documents | | |
| PCH & 2nd Project Initial Study PCH & 2nd NOP | <p>This project is located at 6400 E. Pacific Coast Highway (bounded by 2nd Street to the north, Pacific Coast Highway to the east, a retail shopping center (Marina Shores Shopping Center) to the south, and Marina Drive to the west.</p> <p>http://www.lbds.info/planning/environmental_planning/environmental_reports.asp</p> | The proposed project involves demolition of the existing Seaport Marina Hotel and construction of a commercial center totaling 245,000 square feet (216,000 square feet of retail space and 29,000 square feet of restaurant space) and 1,172 on-site parking spaces (1,044 space three-level parking structure and 128 surface parking spaces). The proposed commercial structures would be one- and two-story buildings with a maximum height of 35 feet. |
| Lease Agreements | | |
| <p>OTD/Edison Parcel Los Angeles County APN 7237-019-809</p> <p>Ellis Equipment, Inc. Lease Agreement</p> <p>Lease Fee = \$2,050 per month</p> | The OTD Parcel is located on the northeast corner of Studebaker road and 2nd Street in the City of Long Beach and commonly referred to as the 'Edison Parcel' or 'Offer To Dedicate (OTD) Parcel.' | Ellis lease agreement utilizes only a portion of the OTD Parcel for storage of construction material. Ellis lease agreement has been amended to a month-to-month lease. |

| | | |
|--|---|--|
| <p>OTD/Edison Parcel Los Angeles County APN 7237-019-809</p> <p>D & S Washout Systems Lease Agreement</p> <p>Lease Fee = \$950 per month</p> | <p>The OTD Parcel is located on the northeast corner of Studebaker road and 2nd Street in the City of Long Beach and commonly referred to as the 'Edison Parcel' or 'Offer To Dedicate (OTD) Parcel.'</p> | <p>D & S Washout Systems Lease Agreement utilizes a portion of the OTD parcel for the storage of work trucks and construction materials. The lease agreement has been amended to a month-to-month lease.</p> |
|--|---|--|

| Task | Description | Status |
|---|--|---|
| Lease Agreements | | |
| <p>California State Lands Commission Lease Agreement PRC9005.9. Orange County APNs: 043-160-47; 043-160-36; 043-160-45; and 043-160-53</p> <p>August 14, 2012 through August 13, 2022</p> | <p>The State Lands Commission issued the LCWA a lease agreement for four parcels approximately totaling four acres adjacent to the Los Cerritos Wetlands Authority Hellman/Phase 2 in the City of Seal Beach.</p> | <p>Staff coordinates with SLC office for ongoing repairs of fence property and continue to stage the Los Cerritos Wetlands Stewardship Program from this site.</p> |
| <p>City of Long Beach Marketplace Marsh License Agreement for Los Angeles County APN 7237-020-21</p> <p>June 7, 2010 through June 30, 2020</p> | <p>The property is approximately 29.38-acres south of 2nd Street</p> | <p>The LCWA recently updated the license agreement to allow tours of the wetlands and extended the license agreement through June 30, 2020.</p> |
| Grants – COMPLETED | | |
| <p>A total of 9 grants have been completed by the LCWA and LCWLT</p> | <p>A total of \$6,025,400 grant funds were acquired and used towards acquisition, restoration studies, restoration projects, and education programs.</p> | <p>See link for details on all completed grants.</p> |
| Grants – ACTIVE | | |
| <p>National Coastal Wetlands Conservation Grant Application</p> <p><u>Active</u></p> | <p>The State Coastal Conservancy (SCC) applied on behalf of the LCWA for the NCWC grant.</p> <p>Performance Period January 29, 2013 through December 31, 2017</p> <p>Total Funding \$1,000,000 Funding Remaining \$1,000,000</p> | <p>The National Coastal Wetlands Conservation Grant was submitted on July 13, 2012 by the SCC for the acquisition of the Steam Shovel Slough. The SCC was awarded the \$1,000,000 grant for the acquisition of Steam Shovel Slough on January 29, 2013. The funds have been re-assigned to the Bryant acquisition.</p> <p>Applying for an extension to use these funds.</p> |

| Task | Description | Status |
|--|--|--|
| Grants - ACTIVE | | |
| <p>State Coastal Conservancy Proposition 1</p> <p>Los Cerritos Wetlands Planning and Restoration Project</p> <p><u>Active</u></p> | <p>Grants funds to complete the environmental review of the CRP per CEQA. Environmental review of the CRP's three proposed alternatives or a hybrid alternative.</p> <p>Performance Period February 1, 2017 through June 30, 2019</p> <p>Total Funding \$500,000 Funding Remaining: \$500,000</p> | <p>The LCWA was successfully awarded the grant funds for the CEQA Planning Document, implementation should commence immediately.</p> |
| <p>San Gabriel and Lower Los Angeles Rivers and Mountains Conservancy Grant State Coastal Conservancy Proposition 1</p> <p>Los Cerritos Wetlands Planning and Restoration Project Proposition 1 Grants</p> <p><u>Active</u></p> | <p>Grants funds to complete the environmental review of the CRP per CEQA. Environmental review of the CRP's three proposed alternatives or a hybrid alternative.</p> <p>Performance Period February 1, 2017 through June 30, 2019</p> <p>Total Funding \$350,000 Funding Remaining: \$350,000</p> | <p>The LCWA was successfully awarded the grant funds for the CEQA Planning Document, implementation should commence immediately.</p> |
| <p>San Gabriel and Lower Los Angeles Rivers and Mountains Conservancy Grant State Coastal Conservancy Proposition 1</p> <p>Los Cerritos Wetlands Acquisition of the Bryant Properties</p> <p><u>Active</u></p> | <p>LCWA is seeking to acquire the frontage and remaining Bryant-Dakin Properties located along 2nd Street/Westminster Avenue in the City of Long Beach totaling approximately 18 acres (Los County Assessor Parcel Nos 7237-020-053 and 7237-020-054).</p> <p>Performance Period February 1, 2017 through June 30, 2018</p> <p>Total Funding \$1,000,000 Funding Remaining: \$1,000,000</p> | <p>The LCWA was successfully awarded the grant funds and negotiations will commence immediately.</p> |

| Task | Description | Status |
|--|--|---|
| Consultant Contracts - COMPLETED | | |
| 5 Completed Consultant Contracts | Please see link for details. | |
| Consultant Contracts - ACTIVE | | |
| LCWA16003 Tidal Influence, LLC Property and Project Management Services <u>Active</u> | <p>The LCWA authorized a contract to Tidal Influence for grant and project management services, property management services for all the LCWA properties, coordination of the Stewardship Program and on-call services as necessary.</p> <p>Performance Period March 1, 2017 through March 1, 2019</p> <p>Total Funding: \$59,000 Remaining Funding: \$41,700</p> | Please see attached Land Management Report from May and June 2017. |
| LCWA 13003 Los Cerritos Wetlands Stewards Homeless Liaison Contract Amended <u>Active</u> | <p>The Los Cerritos Wetlands Stewards and the LCWA have a mutual interest in the implementation of the Stewardship Program which will promote and provide leadership in conservation for educating members as well as the community to farther the appreciation of the wetlands habitat conservation.</p> <p>Performance Period January 1, 2016 through December 30, 2017</p> <p>Total Funding: \$8,700 Remaining Funding: \$8,700</p> | The contract addresses the safety and security of the LCWA properties and meets the LCWA goals and objectives. Currently the Los Cerritos Wetlands Stewards are coordinating any removal of homeless encampments at several locations within the LCWA properties. |

| Task | Description | Status |
|---|--|---|
| Memorandum of Understanding/Agreements | | |
| <p>LCWA08008 Signal Hill Petroleum, Inc. Coastal Development Permit for Vegetation Removal</p> <p>LCWA Phase 1 Properties</p> <p><u>Active</u></p> | <p>Signal Hill Petroleum, Inc. conducts the following activities (1) removing vegetation, debris and soil from the storm water collection and retention system, (2) controlling vegetation surrounding all oil pumps, electrical poles, and pipelines, and (3) removing vegetation surrounding all oil production facilities and buildings.</p> <p>Performance Period March 1, 2016 through December 30, 2017</p> <p>Total Funding: \$20,000 Remaining Funding: \$9,966.91</p> | <p>Tidal Influence was contracted to manage MOA.</p> <p>Signal Hill Petroleum, Inc. annually provides \$10,000 to offset their impacts from proposed work. The LCWA is implementing the 2017 work plan as approved by the Coastal Commission in March 2016.</p> |
| <p>LCWA13002 Southern California Edison Company Memorandum of Agreement</p> <p><u>Active</u></p> | <p>The LCWA entered into a Memorandum of Agreement with Southern California Edison Company to accept funds to provide out-of-kind compensatory mitigation for impacts to shoreline habitat at Catalina Island.</p> <p>Performance Period June 14, 2014 through June 30, 2020</p> <p>Total Funding: \$25,000 Remaining Funding: \$4,634.93</p> | <p>Tidal Influence was contracted to manage MOA. Staff has completed the Habitat Mitigation and Monitoring Plan which allowed for procurement and installation of 425 salt marsh plants.</p> <p>Tidal Influence completed the 2nd Year Monitoring Report to Southern California Edison for the purpose of presenting the baseline conditions of the 0.16 acre restoration site at Zedler Marsh.</p> |

| LCW Stewardship Program | | |
|--|--|---|
| Task | Description | Status |
| Potential Funding Sources | | |
| City of Long Beach Measure A, Public Safety, Infrastructure Repair and Neighborhood Services Measure | The City of Long Beach established a one cent (1%) transactions and use (sales) tax for six years, generating approximately \$48 million annually, declining to one-half cent for four years and then ending, requiring a citizens' advisory committee and independent audits, with all funds remaining in Long Beach. | The City of Long Beach allocated an estimated \$500,000 for restoration work for the Los Cerritos Wetlands. The status of the funding is pending. |
| Los Angeles County: Safe, Clean Neighborhood Parks, Open Space, Beaches, Rivers Protection, and Water Conservation Measure Section 6(e); subsection 2(A) Supervisor Janice Hahn, Fourth District Potentially \$463,983 in funding | To replace expiring local funding for safe, clean neighborhood/city/county parks; increase safe playgrounds, reduce gang activity; keep neighborhood recreation/senior centers, drinking water safe; protect beaches, rivers, water resources, remaining natural areas/open space; 1.5 cents will be levied annually per square foot of improved property in Los Angeles County, with bond authority, requiring citizen oversight, independent audits, and funds used locally. | Up to fifteen percent (15%) shall be set aside and designated as the maintenance and servicing amount, and shall be used only to maintain and service, including resource protection activities for the capital outlay projects funded by the District... ...The maintenance and servicing amount shall be allocated each year as follows: ...point five percent (0.5%) to the Los Cerritos Wetlands Authority... An estimated \$92,796,612 in Annual Taxes to be collected. |
| Education Programs | | |
| Public Access Improvement and Wetlands Restoration | Restoration and enhancement of existing wetlands function is one of the primary objectives of the LCWA. Public access for wildlife viewing and enjoyment may involve site improvements. | LCWA has successfully partnered with Los Cerritos Wetlands Land Trust (LCWLT) and they have successfully applied for and received several grants that provide for the Los Cerritos Wetlands Stewardship Program monthly nature walks through December 2017. Please refer to the attached Exhibit B: Los Cerritos Wetlands Stewardship Program updates for a full report. |

| Task | Description | Status |
|---|--|--|
| Capital Projects & Initiatives | | |
| <p>County of Orange, OC Public Works Contract (MA-080-15010071)</p> <p><u>Active</u></p> | <p>Orange County Public Works entered into contract with LCWA to provide wetland restoration services and supplies including five years of monitoring reports from the LCWA's Stewardship Program</p> <p>Performance Period September 1, 2014 through September 1, 2019</p> <p>Total Funding \$155,500 Funding Remaining: \$37,312.50</p> | <p>Tidal Influence was contracted to manage and implement the project, planting occurred on the Orange County mitigation site, and Staff continues to monitor the progress on the project.</p> |
| <p>Tarplant Mitigation Project - Ascon</p> <p><u>Active</u></p> | <p>The LCWA entered into a Memorandum of Agreement with Ascon to accept mitigation funds for the Southern Tarplant Mitigation Plan for a five year mitigation plan to grow and monitor Southern Tarplant at Zedler Marsh</p> <p>Performance Period November 3, 2016 through November 1, 2021</p> <p>Year 1 Funding: \$96,070 Year 1 Remaining Funding: \$57,603.92 Year 2 Funding: \$62,410 Year 2 Remaining Funding: \$62,410</p> | <p>Tidal Influence was contracted to manage and implement this project, seeding, and monitoring plan at Zelder Marsh. Staff continues to monitor the progress on the project.</p> <p>Progress:</p> <ul style="list-style-type: none"> - Seeding of tarplant - Fencing installing - Printing and posting of signage - Irrigation system installation - Continued watering of tarplant seedlings - Non-native vegetation control - Year 1 tarplant monitoring completed on June 9, 2017 |
| Grants – COMPLETED | | |
| <p>A total of 9 grants completed by the LCWA and LCWLT</p> | <p>A total of \$6,025,400 grant funds were acquired and used towards acquisition, restoration studies, restoration projects, and education programs.</p> | <p>See link for details on all completed grants.</p> |

| Task | Description | Status |
|--|---|--|
| Grants – ACTIVE | | |
| LCWA14001 Los Angeles County Regional Park and Open Space District for the Fourth Supervisorial District Zedler Marsh Urban Trails <u>Active</u> | The LCWA applied for the 2013 Competitive Trails Grant Program funds for the purpose of restoring public coastal access opportunities while stabilizing native coastal habitat within the Phase 1 properties specifically within Zedler Marsh. Performance Period March 4, 2014 through December 31, 2016 Total Funding \$105,600 Funding Remaining: \$0 | The grant was completed on June 30, 2016 with the final installation of native plants along the improved trail system. In addition, trail interpretive signage were printed and installed and 3 new trail benches were along the trail system. Installed new irrigation for plantings along the trails system. Staff is completing invoicing and other administrative documents to close-out grant. |
| LCWA14002 San Gabriel and Lower Los Angeles Rivers and Mountains Conservancy Los Cerritos Wetlands Trails Improvement Project from the Funds <u>Active</u> | LCWA applied for matching grant funds for the Los Cerritos Wetlands Trails Improvement Project from the San Gabriel and Lower Los Angeles Rivers and Mountains Conservancy which were awarded on June 23, 2014 Performance Period March 4, 2014 through November 30, 2017 Total Funding \$98,000 Funding Remaining: \$43,312.72 | The grant has completed the following items: -7 public restoration events were completed to conduct restoration work along the trails -Installed irrigation system along trail system -Installed 1,000 native plants along the trail system -Removed 4,000 lbs of non-native vegetation along the trails system -Installation of decomposed granite trails - Created education/picnic area at the trail entrance - Installation of bike racks - Delineated roadside trails |
| Warne Family Endowment Fund <u>Active</u> | The LCWLT applied for the Warne Foundation Grant Program to fund Belding's Savannah Surveys at Los Cerritos Wetlands. Performance Period January 2017 through December 31, 2017 Total Funding: \$31,000 Funding Remaining: \$26,677.60 | Belding's Savannah Sparrow surveys will be conducted twice a month during breeding and nesting season to determine breeding territories for pairs of Belding's. A portion of the grant also goes towards restoring Belding's Savannah Sparrow habitat outside of nesting season and 6 months of Stewardship Program 1st Saturday Restoration Events and 3 rd Friday Trash Clean-ups in LCW. - 13 Belding's Savannah Sparrow surveys have been completed at LCW. |

| Task | Description | Status |
|--|---|--|
| Grants – ACTIVE | | |
| <p>California Native Plant Society (CNPS) South Coast Chapter</p> <p>Conze Bequest Grant Program</p> <p><u>Active</u></p> | <p>The LCWLT applied for the CNPS Conze Bequest Grant Program to fund a native plant demonstration garden along the Zedler Marsh Trails.</p> <p>Performance Period January 2017 through February 2018</p> <p>Total Funding: \$6,000 Funding Remaining: \$6,000</p> | <p>Work will begin in May 2017 with removal of non-native species and growing of native plants. Planting of native plants will occur in the fall and winter of 2017 which not only provides habitat for native fauna, but directly provides a buffer to nearby, rare coastal salt marsh habitat which is home to the endangered Belding's Savannah Sparrow.</p> <p>Progress report available in Aug. 2017.</p> |
| <p>California State Coastal Conservancy</p> <p>Explore the Coast Grant Program</p> <p><u>Approved</u></p> | <p>The Los Cerritos Wetlands Land Trust (LCWLT) applied for the Explore the Coast Grant Program to fund education programs at Zedler Marsh.</p> <p>Total Funding: \$15,560 Funding Remaining: \$15,560</p> | <p>The LCWLT will provide bus transportation to and from Zedler Marsh for 15 field trips of LBUSD 3rd grade students.</p> |
| Memorandum of Understanding/Agreements | | |
| <p>Signal Hill Petroleum, Inc. (SHPI) Memorandum of Agreement</p> <p><u>Active</u></p> | <p>The LCWA entered into a Memorandum of Agreement with SHPI to use specific areas within the SHPI current exclusive easement for growth of Southern Tarplant under the Southern Tarplant Mitigation Plan.</p> <p>Performance Period February 3, 2017 through perpetuity</p> | <p>The LCWA will have access to these specific areas within the SHPI exclusive easement into perpetuity.</p> |
| <p>LCWA13002 Southern California Edison Company Memorandum of Agreement</p> <p><u>Active</u></p> | <p>The LCWA entered into a Memorandum of Agreement with Southern California Edison Company to accept funds to provide out-of-kind compensatory mitigation for impacts to shoreline habitat at Catalina Island.</p> <p>Performance Period June 14, 2014 through June 30, 2020</p> <p>Total Funding: \$25,000 Remaining Funding: \$4,634.93</p> | <p>Tidal Influence was contracted to manage MOA. Staff has completed the Habitat Mitigation and Monitoring Plan which allowed for procurement and installation of 425 salt marsh plants.</p> <p>Tidal Influence completed the 2nd Year Monitoring Report to Southern California Edison for the purpose of presenting the baseline conditions of the 0.16 acre restoration site at Zedler Marsh.</p> |

| Task | Description | Status |
|--|--|---|
| Memorandum of Understanding/Agreements | | |
| LCWA13001 Aquarium of the Pacific Memorandum of Agreement <u>Active</u> | The LCWA entered into a Memorandum of Agreement in order to provide a citizen science sea turtle monitoring program for the general public. Performance Period March 1, 2016 through March 1, 2018. | For updates on the citizen science sea turtle monitoring program, please visit http://www.aquariumofpacific.org/give/membership/seaturtles |
| LCWA13000 Los Cerritos Wetlands Land Trust Memorandum of Agreement <u>Active</u> | The LCWA entered into a MOA with the Los Cerritos Wetlands Land Trust for stewardship services of the Los Cerritos Wetlands Stewardship Program Performance Period March 1, 2016 through March 1, 2018. | Please see the attached Los Cerritos Wetlands Stewardship Program Summary Report. |
| Memorandum of Agreement with the El Dorado Audubon <u>Active</u> | El Dorado Audubon is working with the LCWA to develop bird walks at LCWA Phase 2 properties. Performance Period March 1, 2016 through March 1, 2018. | Please see the attached El Dorado Audubon Society report for a summary of the Los Cerritos Wetlands Nature/Bird Walks. For more information, please visit http://eldoradoaudubon.org/ |
| Sea and Sage Monthly Bird Counts | Darrell Wilson conducts bird counts using a research permit on the Hellman Properties. | Bird counts from monthly surveys are summarized in reports submitted to LCW Ebird account and are provided in an attached summary report. |



Field Report Memorandum

To: Mark Stanley, LCWA

From: Eric Zahn, Tidal Influence, LLC

Cc: Marcelo Ceballos, Alene Spindel, & Tia Blair, Tidal Influence

Date: July 12th, 2017

Subject: Land Management Field Report

Sites Inspected: Zedler Marsh, Bryant Lease West, Hellman/Gum Grove, State Lands Parcel, & OTD Parcel

Inspection Date: June 29th, 2017

Note: The locations of critical observations and issues noted in this document are called out on the map on the final page. Photos of certain issues are attached at the end of the report.

OTD Parcel

1. Gates –
 - a. The entrance gate needs barbed wire installed on it. A small gap between two posts needs to be closed. **We recommend hiring a fence contractor.**
2. Trails – Ok
3. Fences – Barbed wire needs to be replaced on the portion of the fence line that is nearest the entrance gate. One large fence hole still needs to be fixed located right of the entrance gate. **We recommend hiring a fence contractor ASAP.**
4. Homeless – The active encampment that was observed in April has been remediated, however, a substantial amount of litter, trash, and stolen materials still exist on-site. **We recommend this trash is disposed of immediately by the LCWA's homeless contractor.**

Zedler Marsh

5. Gates – OK
6. Trails – OK
7. Fences – OK

State Lands Parcel

8. Gates – OK
9. Trails – OK
10. Fences – Vegetation is growing out of control along the driveway fence line. **We recommend that this vegetation be cleared in order to assure security of the site.**
11. Homeless – OK
12. Other – **The Lions Club has removed the graffiti on the foundation.**

Hellman

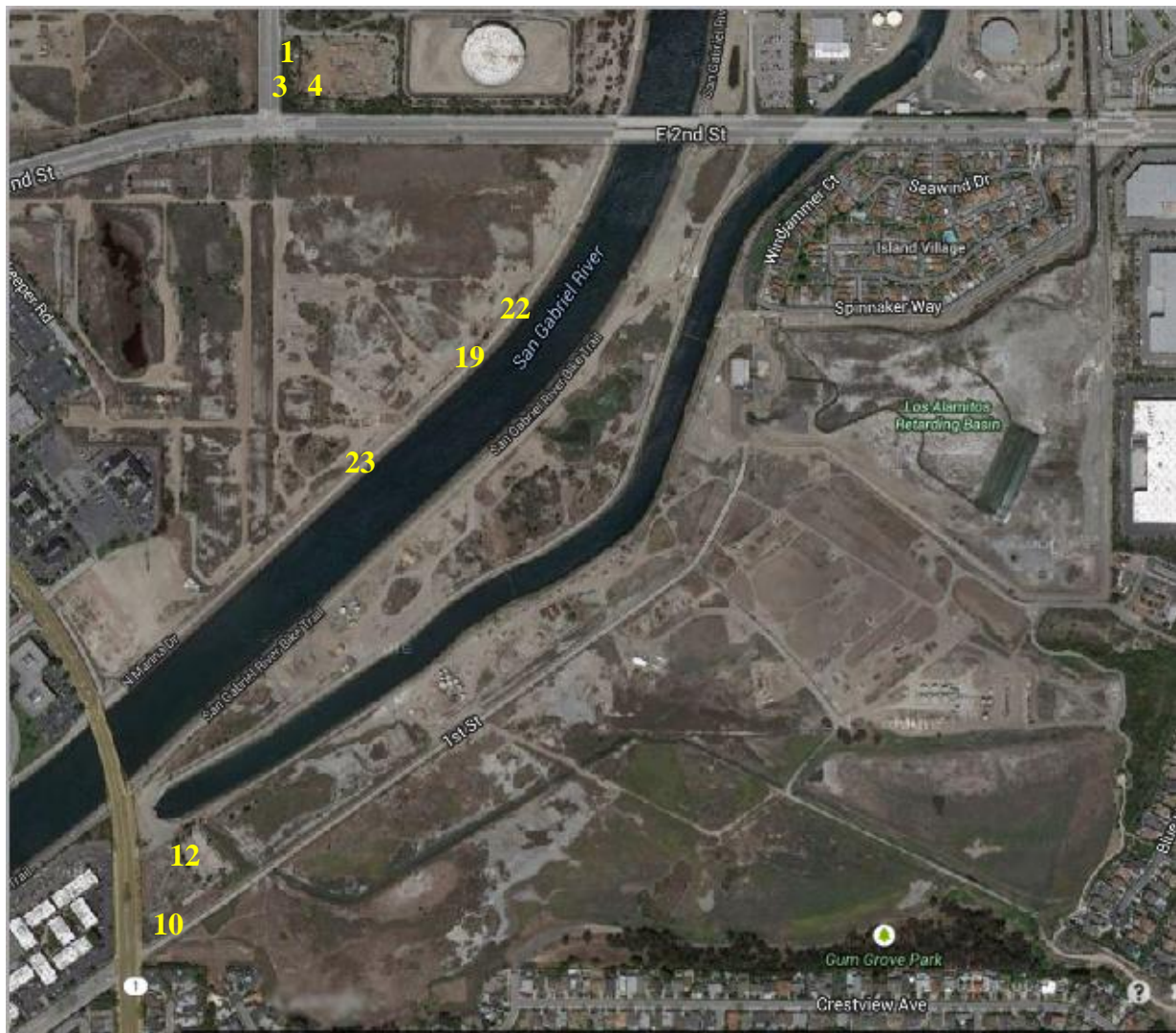
- 13. Gates – OK
- 14. Trails – OK/Clear
- 15. Fences – OK/Patched
- 16. Homeless – OK
- 17. Other – A number of trespassers have been observed on our wildlife cams (see photos). This activity is usually heightened during the summer months. **We recommend coordinating with SBPD to increase site patrols.**

Bryant Lease West

- 18. Gates – All the locks and chains for the gates along levee have been removed and all gates are now open. **We recommend LCWA staff meeting with LA County to determine a new approach to securing this property. We recommend that lock boxes are installed on the gates.**
- 19. Trails – OK
- 20. Fences – OK
- 21. Homeless – 1 active encampment still exists on this property, which has been reported since June 2016. **We recommend that this encampment is immediately remediated.** All trash and debris needs to be discarded.
- 22. Other – Citizens were observed hitting golf balls into the property from the levee (see photo).

Map

The photos of the issues and observations detailed above are labeled by number. The number on the map below indicates the location of these issues and observations. This includes all issues except for homeless encampments which are detailed in the attached homeless report.



OTD Parcel

Fence Break



Encampment Trash



Encampment Trash



Bryant Lease West



This encampment has been reported for over 10 months and has not been remediated

State Lands Parcel





Field Report Memorandum

To: Mark Stanley, LCWA

From: Eric Zahn, Tidal Influence, LLC

Cc: Marcelo Ceballos, Alene Spindel, & Tia Blair, Tidal Influence

Date: June 21st, 2017

Subject: Land Management Field Report

Sites Inspected: Zedler Marsh, Bryant Lease West, Hellman/Gum Grove, State Lands Parcel, & OTD Parcel

Inspection Date: June 1st, 2017

Note: The locations of critical observations and issues noted in this document are called out on the map on the final page. Photos of certain issues are attached at the end of the report.

OTD Parcel

1. Gates –
 - a. The entrance gate needs barbed wire installed on it. A small gap between two posts needs to be closed. **We recommend hiring a fence contractor.**
 - b. The sign at the entrance needs to be replaced to represent the new lessee (Ellis Equipment).
2. Trails – Ok
3. Fences – Barbed wire needs to be replaced on the portion of the fence line that is nearest the entrance gate. One fence holes still needs to be patched. **We recommend hiring a fence contractor ASAP.**
4. Homeless – The active encampment tha was observed in April has been remediated, however, a substantial amount of litter, trash and stolen materials still exist on-site. **We recommend this trash is disposed of immediatley by the LCWA's homelessss contractor.**
5. Other – Southern California Edison trimmed the trees under the power line (see photo)

Zedler Marsh

6. Gates – OK
7. Trails – OK
8. Fences – OK
9. Other – Springtime vegetation cleared in the SHP easements per their CDP

State Lands Parcel

10. Gates – OK
11. Trails – OK
12. Fences – Vegetation is growing out of control along the driveway fence line. **We recommend that this vegetation be cleared in order to assure security of the site.**
13. Homeless – OK
14. Other – The foundation has graffiti. **The Lions Club has been contacted to have it removed.**

Hellman

15. Gates – OK

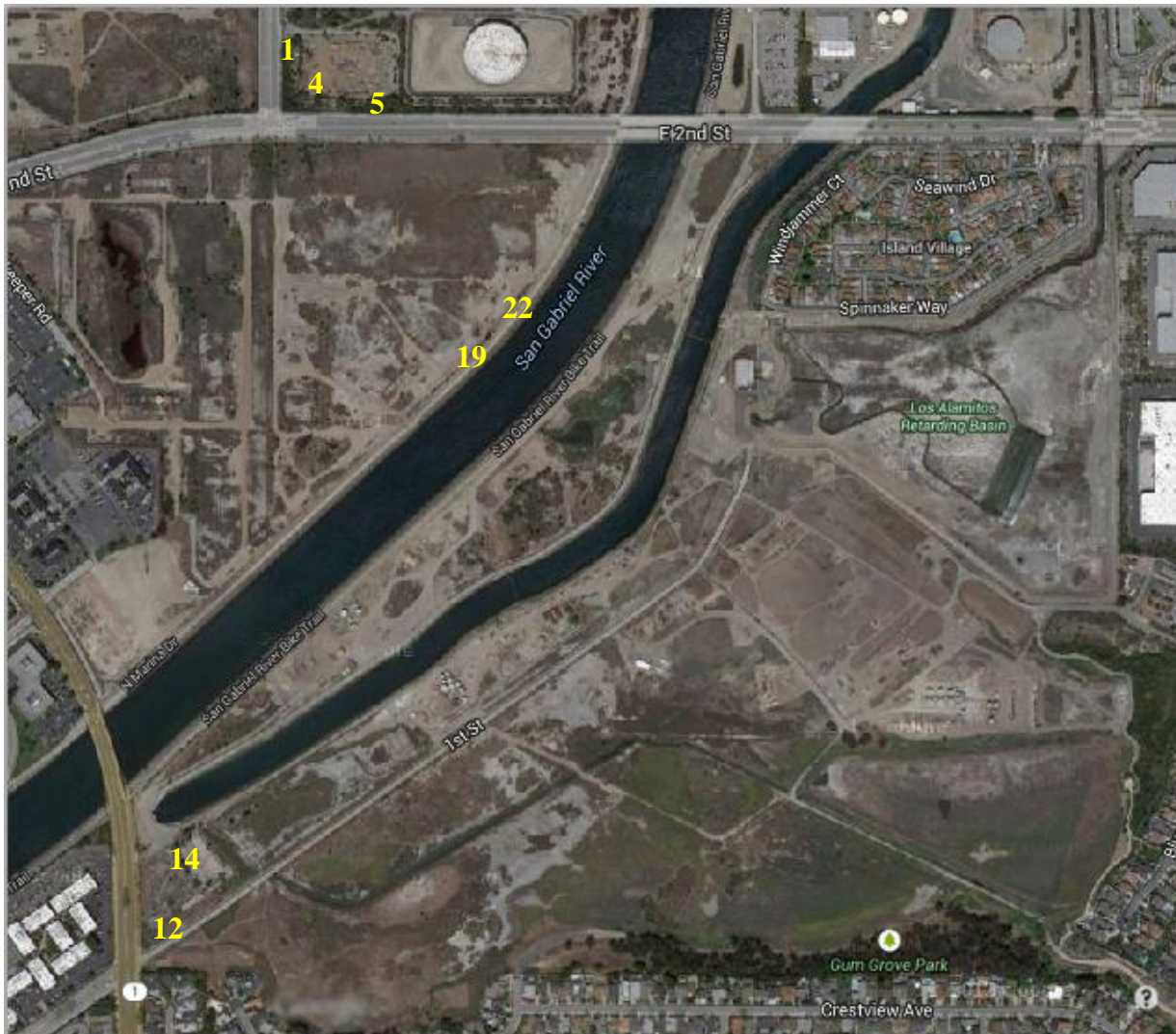
16. Trails –
 - a. The trail used by the Stewardship Program were covered in weeds again and were cleared in mid-June.
 - b. The trail near the Heron Pointe gate was badly eroded. The ruts have been filled and the trail slightly adjusted to avoid certain hazards.
17. Fences – A break in the fence along Gum Grove was observed in April and has been repaired along with an additional break that was observed during this month's property patrol.
18. Homeless – OK
19. Other – A number of trespassers have been observed on our wildlife cams (see photos). This activity is usually heightened during the summer months. **We recommend coordinating with SBPD to increase site patrols.**

Bryant Lease West

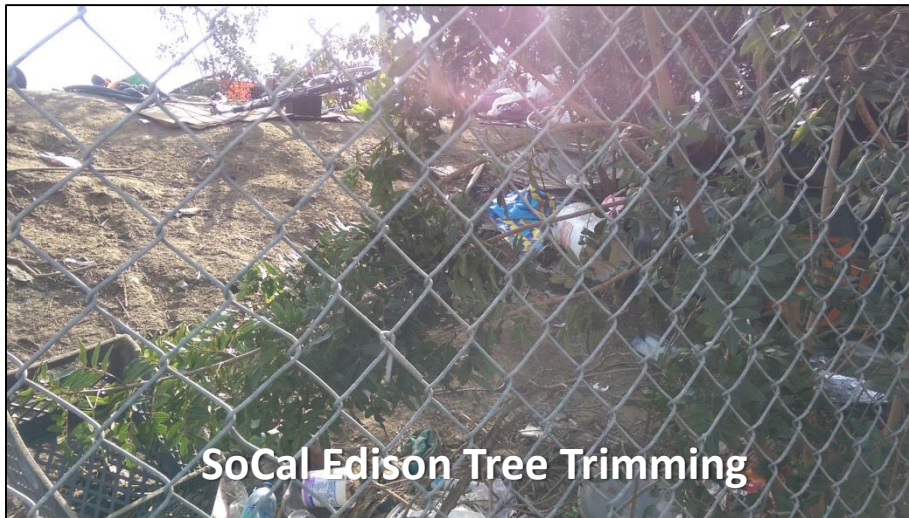
20. Gates – All the locks and chains for the gates along levee have been removed and all gates are now open. **We recommend LCWA staff meeting LA County to determine a new approach to securing this property. We recommend that lock boxes are installed on the gates.**
21. Trails – OK
22. Fences – OK
23. Homeless – 1 active encampment still exists on this property, which has been reported since June 2016. **We recommend that this encampment is immendiately remediated.** All trash and debris needs to be dicarded.
24. Other – Citizens were observed hitting golf balls into the property from the levee (see photo).

Map

The photos of the issues and observations detailed above are labeled by number. The number on the map below indicates the location of these issues and observations. This includes all issues except for homeless encampments which are detailed in the attached homeless report.



OTD Parcel



Bryant Lease West



This encampment has been reported for over 10 months and has not been remediated

State Lands Parcel



Graffiti on State Lands Parcel

Hellman



LOS CERRITOS WETLANDS STEWARDSHIP PROGRAM SUMMARY REPORT

APRIL 28TH, 2017 – JULY 15TH, 2017

Los Cerritos Wetlands Authority

Nature Walks

Turtle Trek, Raptor Ramble, Heron Hike

Nature walks supported by the Los Cerritos Wetlands Land Trust continue to be a significant draw for the community. People from all over the California coast line participated in nature walks in May and June. In the last 2 nature walks, approximately 60 community members have enjoyed hiking through the wild and urban terrain of Los Cerritos Wetlands, catching rare glimpses of its wildlife and natural beauty. Each walk begins at 1st street and Pacific Coast Highway in Seal Beach at 8:00am every 1st Saturday of the month. Members of the public are welcome to join in on the 3 different tours around the wetlands. For more information about each tour, please contact elizabeth@lcwlandtrust.org.

Restoration Events

Community volunteers participated in public restoration events at Zedler Marsh in Los Cerritos Wetlands between May through July of this year. During these months, 65 community volunteers contributed 130 volunteer hours and removed 1,450 pounds of non-native plants around the Zedler Marsh Trail restoration areas. The Stewardship Program also hosted 4 college and university service-learning field trips and 3 high school service-learning field trips for 136 students who contributed 336 hours to remove 2,000 pounds of weeds and enhance the growing space facility. The Stewardship Program also supported college intern Crew Days on every Friday of each month from May – July 15th. Crew Days accomplished many goals for the Stewardship Program, the developing Zedler Marsh Trails Project, the new Tarplant project, and the Zedler Marsh native plant growspace. Crew Day college students contributed 195 hours during this quarter to propagate 800 native plants in the growspace facility, remove 3,000 lbs of nonnative vegetation, and enhance the Zedler Marsh trail system to prepare for the trails grand opening event in September. **Restoration events, service-learning field trips and intern Crew Days contributed nearly 600 volunteer hours and \$14,484.00 in-kind services between May and July.** To volunteer for an event, meet at 1st street and Pacific Coast Highway in Seal Beach at 10:30am on the 1st Saturday of the month. To request a restoration or education event for your group or organization, please contact iwanttohelp@tidalinfluence.com.

Special Events

The LCWA is excited to unveil the completed Zedler Marsh Trails on September 30th, 2017. This event will celebrate the first-ever publicly accessible trail system in Los Cerritos Wetlands. The Stewardship Program will be organizing the event which would not be possible without the many Stewardship Program partners, supporters and volunteers who have contributed significantly over the last eight years. We hope to see you at the grand opening event! Contact info@tidalinfluence.com for more information.



LAND TOURS IN LOS CERRITOS WETLANDS AND HABITAT RESTORATION EVENTS IN ACTION



HIGH SCHOOL SERVICE — LEARNING PROGRAM

April 28th, 2017 – July 15th, 2017 | Los Cerritos Wetlands Stewardship Program Summary Report



LONG BEACH CITY COLLEGE SERVICE — LEARNING PROGRAM

El Dorado Audubon Society
California Chapter of The National Audubon Society
Los Cerritos Wetlands

LCWA Nature/Bird Walks
January to July 2017

Summary

El Dorado Audubon has been leading nature/bird walks for the Los Cerritos Wetlands Authority since 2009. As a local chapter of the National Audubon Society, El Dorado Audubon's mission is conservation of native birds and their habitats and education of members and the community.

Los Cerritos Wetlands is an Audubon Important Bird Area. Our walks encompass the importance of wetlands and Los Cerritos in particular. We recognize the connectivity of the wetlands with the San Gabriel River, Seal Beach National Wildlife Refuge, El Dorado Nature Center and other Orange Coast Wetlands. We continue to draw community members from throughout Southern California and from as far away as Bakersfield, Nevada, Texas and Wisconsin.

Guest speakers on our walks covered a variety of topics: Bays and Estuaries of Southern California, Birds of the Pacific Flyway, sea turtles, butterflies, native and non-native wildflowers.

Volunteer Hours

January through April 2017: 420

Hours at \$22.00/hour: \$9,240

Highlights by Month – January through April

January

Season rains from October through early January left ponds and ponding on the wetlands.

Highlights of species observed included: Green-winged Teal, American Wigeon and Northern Pintail using the ponds on site. A total of 43 avian species were seen including raptors, shorebirds, herons, egrets, songbirds and sparrows.

February

Seasonal rainfall for October through early February was over 15 inches resulting in lots of on the entire site. Highlights included a flock of Western Meadowlarks, Northern Harrier and Orange-crowned Warbler for a total of 33 species.

March

The sky was cloudy and fog rolled in creating a magical wonderland. Highlights included Green-winged Teal the ponds and a pair of Western Bluebirds for a total of 24 species.

April

Beautiful displays of native and non-native wildflowers and butterflies galore! Highlights included a pair of Gadwall, Northern Rough-winged Swallow, Hooded Oriole and Belding's Savannah Sparrow for a total of 23 avian species.

May

Birders enjoyed a cool spring morning with beautiful displays of native and non-native wildflowers. Highlights included good looks at shorebirds, Cassin's Kingbird, Northern Rough-winged Swallow and Barn Swallow for a total of 25 avian species



Figure 1. Hooded Oriole, May 13, 2017. Photo credit: Cindy Crawford

June

Birders experienced a cool morning with a heavy marine layer and a light drizzle of rain. Most observations were made during the last half hour of the walk as the heavy marine layer lifted. Highlights included Northern Harrier, Black-necked Stilt, Common Yellowthroat and Belding's Savannah Sparrow for a total of 20.



Figure 2. Belding's Savannah Sparrow, June 10, 2017. Photo credit: Cindy Crawford



Figure 3. Allen's Hummingbird, June 10, 2017. Photo credit: Cindy Crawford



Figure 4. Black necked stilt, June 10, 2017. Photo credit: Cindy Crawford

July

Participants enjoyed a warm summer morning with good looks at Southern Tarplant and other native wildflowers in full bloom. Highlights included White-tailed Kite, Belding's Savannah Sparrow, and Killdeer. for a total of 22 avian species observed.

Species observed January through July

Los Cerritos Wetlands Hellman property, Orange, California, US

Jan 14, 2017 8:00 AM - 10:00 AM

43 species (+8 other taxa)

Canada Goose 7
 American Wigeon 59
 Mallard 12
 Northern Pintail 24
 Green-winged Teal 12
 teal sp. 25
 duck sp. 10
 Double-crested Cormorant 12
 Great Blue Heron 2
 Great Egret 2
 Snowy Egret 3
 Osprey 1
 Northern Harrier 1
 Cooper's Hawk 1

Red-tailed Hawk 2
American Coot 5
Black-bellied Plover 1
Killdeer 6
Western Sandpiper 1
peep sp. 15
Spotted Sandpiper 1
Willet 16
shorebird sp. 8
Ring-billed Gull 1
Western Gull 17
gull sp. 32
Rock Pigeon (Feral Pigeon) 1
Eurasian Collared-Dove 1
Mourning Dove 7
Anna's Hummingbird 2
Allen's Hummingbird 2
Belted Kingfisher 1
American Kestrel 2
Black Phoebe 3
Say's Phoebe 6
Cassin's Kingbird 2
American Crow 5
Tree Swallow 1
swallow sp. 1
Northern Mockingbird 2
Common Yellowthroat 2
Yellow-rumped Warbler (Audubon's) 3
White-crowned Sparrow 28
Savannah Sparrow 9
Savannah Sparrow (Belding's) 6
Song Sparrow 7
sparrow sp. 23
Red-winged Blackbird 2
House Finch 2
Lesser Goldfinch 18
House Sparrow 8

View this checklist online at <http://ebird.org/ebird/view/checklist/S33672426>

Los Cerritos Wetlands Hellman property, Orange, California, US
Feb 11, 2017 8:00 AM - 10:00 AM
33 species (+5 other taxa)

Canada Goose 25
Mallard 7
Double-crested Cormorant 6
Great Blue Heron 3
Great Egret 3
Snowy Egret 2
Osprey 1
Northern Harrier 1

Red-tailed Hawk 2
American Coot 40
Killdeer 4
Least Sandpiper 1
peep sp. 15
Greater Yellowlegs 1
Willet 12
gull sp. 85
Mourning Dove 17
Anna's Hummingbird 1
Allen's Hummingbird 3
hummingbird sp. 2
Belted Kingfisher 1
American Kestrel 1
Black Phoebe 2
Cassin's Kingbird 3
American Crow 30
House Wren 1
Northern Mockingbird 1
European Starling 5
Orange-crowned Warbler 1
Common Yellowthroat 2
warbler sp. (Parulidae sp.) X
White-crowned Sparrow 5
Savannah Sparrow (Belding's) 1
Song Sparrow 1
Western Meadowlark 14
House Finch 3
Lesser Goldfinch 1
Acanthis/Spinus sp. 5

View this checklist online at <http://ebird.org/ebird/view/checklist/S34305408>

Los Cerritos Wetlands Hellman property, Orange, California, US
Mar 11, 2017 8:00 AM - 10:00 AM
24 species (+2 other taxa)

Mallard 7
Green-winged Teal 13
Great Blue Heron 3
Great Egret 2
Snowy Egret 5
Cooper's Hawk 1
Red-tailed Hawk 2
Killdeer 3
peep sp. 25
Willet 7
Mourning Dove 17
Allen's Hummingbird 3
American Kestrel 1
Merlin 1
Black Phoebe 3

Cassin's Kingbird 2
American Crow 5
House Wren 2
Western Bluebird 2
Northern Mockingbird 1
White-crowned Sparrow 10
Song Sparrow 2
Red-winged Blackbird 2
Western Meadowlark 14
House Finch 5
Acanthis/Spinus sp. 3

View this checklist online at <http://ebird.org/ebird/view/checklist/S35223071>

Los Cerritos Wetlands Hellman property, Orange, California, US
Apr 8, 2017 8:00 AM - 10:00 AM
23 species (+7 other taxa)

Gadwall 2
Mallard 7
duck sp. 23
Double-crested Cormorant 15
Great Blue Heron 3
Great Egret 2
Snowy Egret 14
Killdeer 3
Least Sandpiper 1
peep sp. 15
Willet 2
gull sp. 27
Mourning Dove 35
Allen's Hummingbird 5
American Kestrel 2
Cassin's Kingbird 2
American Crow 1
Northern Rough-winged Swallow 3
swallow sp. 15
House Wren 2
Northern Mockingbird 3
Common Yellowthroat 3
White-crowned Sparrow 15
Savannah Sparrow (Belding's) 2
sparrow sp. 45
Red-winged Blackbird 2
Hooded Oriole 1
House Finch 26
House/Purple Finch 1

View this checklist online at <http://ebird.org/ebird/view/checklist/S35856809>

Los Cerritos Wetlands Hellman property, Orange, California, US

May 13, 2017 8:00 AM - 10:00 AM
25 species (+8 other taxa)

Mallard 5
duck sp. 9
Double-crested Cormorant 5
Great Blue Heron 3
Great Egret 1
Snowy Egret 5
Cooper's Hawk 1
Red-tailed Hawk 1
Killdeer 2
Willet 3
shorebird sp. 7
gull sp. 12
Forster's Tern 4
tern sp. 7
Mourning Dove 27
Allen's Hummingbird 2
hummingbird sp. 7
American Kestrel 1
Black Phoebe 3
Cassin's Kingbird 2
American Crow 3
Northern Rough-winged Swallow 5
Barn Swallow 3
swallow sp. 35
House Wren 3
Northern Mockingbird 2
Common Yellowthroat 5
Song Sparrow 3
sparrow sp. 15
Red-winged Blackbird (Red-winged) 2
Hooded Oriole 1
House Finch 35
Acanthis/Spinus sp. 3

View this checklist online at <http://ebird.org/ebird/view/checklist/S37647314>

Los Cerritos Wetlands Hellman property, Orange, California, US
Jun 10, 2017 8:00 AM - 10:00 AM
20 species (+5 other taxa)

Double-crested Cormorant 5
Great Blue Heron 2
Snowy Egret 3
Northern Harrier 1
Black-necked Stilt 1
gull sp. 12
Forster's Tern 2
tern sp. 5
Mourning Dove 8

Allen's Hummingbird 1
hummingbird sp. 3
Black Phoebe 1
American Crow 3
Northern Rough-winged Swallow 3
Barn Swallow 5
swallow sp. 12
Bushtit 8
House Wren 2
Northern Mockingbird 3
Common Yellowthroat 11
Savannah Sparrow (Belding's) 10
Song Sparrow 2
Red-winged Blackbird 2
House Finch 25
Acanthis/Spinus sp. 2

View this checklist online at <http://ebird.org/ebird/view/checklist/S37647177>

Los Cerritos Wetlands Hellman property, Orange, California, US
Jul 8, 2017 8:00 AM - 10:00 AM
22 species (+2 other taxa)

Double-crested Cormorant 3
Great Blue Heron 2
Snowy Egret 2
Black-crowned Night-Heron 1
White-tailed Kite 1
Red-tailed Hawk 1
Killdeer 2
Sanderling 2
Rock Pigeon (Feral Pigeon) 3
Mourning Dove 17
hummingbird sp. 2
American Kestrel 1
American Crow 5
Northern Rough-winged Swallow 25
Barn Swallow 3
swallow sp. 35
House Wren 2
Northern Mockingbird 1
Common Yellowthroat 7
Savannah Sparrow (Belding's) 5
Red-winged Blackbird (Red-winged) 2
Hooded Oriole 1
House Finch 37
Lesser Goldfinch 2

View this checklist online at <http://ebird.org/ebird/view/checklist/S38104247>

Los Cerritos Wetlands Land Trust Field Trip Program
LCWA Board Meeting Report
August 3, 2017

This summer, in partnership with the City of Long Beach Department of Parks, Recreation and Marine, the Los Cerritos Wetlands Land Trust has launched an official BE SAFE Park Site Field Trip Program.

This year Long Beach has 11 park sites that stay open later every day as part of its Summer Activities in a Friendly Environment (BE SAFE) program. Each park site offers classes, excursions and athletic programs in underserved areas throughout the City. LCWLT has scheduled a walking field trip program with Tidal Influence for all eleven sites. The walks commence at the Hellman property, attendees are led through educational activities at the drop-off point and along the trail and trips culminate at the Heron Point amphitheater, where participants receive a free dinner meal. Trips host approximately 35-40 participants from ages 5 – 16 yrs old from each of the park sites and are two hours in duration (with travel time). Nearly all participants from these parks have never walked on a trail before nor experienced coastal wetlands and the beautiful wildlife of Los Cerritos Wetlands.

The BE SAFE Field Trips commenced with Ramona Park on June 30 and was followed by Houghton Park on July 6, Scherer Park on July 7 and Seaside Park on July 14. The remaining schedule of BE SAFE Field Trips are as follows:

7/20/2017-Silverado Park- 1545 W. 31st Street
7/21/2017- King Park- 1950 Lemon Avenue
7/26/2017- Admiral Kidd Park-2125 Santa Fe Avenue
7/27/2017- Drake Park- 951 Maine Avenue
7/28/2017 -Pan American Park- 5157 E. Centralia Street
8/4/2017- Bixby Park- 130 Cherry Avenue
8/18/2017- Orizaba Park- 1345 Orizaba Avenue

In the fall, the LCWLT and Tidal Influence are planning Zedler Marsh Estuary Explorers field trips through the support of an Explore the Coast Grant from the California State Coastal Conservancy. Third and fourth grade students from LBUSD Title I schools will be bussed to Zedler Marsh to explore trails and experience the growing living laboratory. Planning and scheduling are currently underway.

In addition, LCWLT is working to organize a field trip for board members of Long Beach Council Parent Teacher Association (LBCPTA) as well as Board members of individual PTA units. This trip will serve as an introduction to the Wetlands for many of its participants as well as a showcase for field trips commencing on the Hellman property and Zedler Marsh.

Photos courtesy of Tidal Influence



Sea and Sage Bird Survey Report May 2017

| Species | Count | Location | Observation type | Observation date |
|--------------------------------|-------|----------------|------------------|------------------|
| Mallard | 3 | Phase2/Hellman | Traveling | 25-May-17 |
| Great Blue Heron | 1 | Phase2/Hellman | Traveling | 25-May-17 |
| Great Egret | 1 | Phase2/Hellman | Traveling | 25-May-17 |
| Snowy Egret | 1 | Phase2/Hellman | Traveling | 25-May-17 |
| Red-shouldered Hawk | 2 | Phase2/Hellman | Traveling | 25-May-17 |
| Forster's Tern | 1 | Phase2/Hellman | Traveling | 25-May-17 |
| Mourning Dove | 12 | Phase2/Hellman | Traveling | 25-May-17 |
| Anna's Hummingbird | 1 | Phase2/Hellman | Traveling | 25-May-17 |
| Allen's Hummingbird | 9 | Phase2/Hellman | Traveling | 25-May-17 |
| Pacific-slope Flycatcher | 1 | Phase2/Hellman | Traveling | 25-May-17 |
| Black Phoebe | 2 | Phase2/Hellman | Traveling | 25-May-17 |
| Cassin's Kingbird | 1 | Phase2/Hellman | Traveling | 25-May-17 |
| American Crow | 9 | Phase2/Hellman | Traveling | 25-May-17 |
| Common Raven | 2 | Phase2/Hellman | Traveling | 25-May-17 |
| Northern Rough-winged Swallow | 1 | Phase2/Hellman | Traveling | 25-May-17 |
| Barn Swallow | 2 | Phase2/Hellman | Traveling | 25-May-17 |
| Cliff Swallow | 10 | Phase2/Hellman | Traveling | 25-May-17 |
| Bushtit | 6 | Phase2/Hellman | Traveling | 25-May-17 |
| House Wren | 12 | Phase2/Hellman | Traveling | 25-May-17 |
| Northern Mockingbird | 1 | Phase2/Hellman | Traveling | 25-May-17 |
| European Starling | 1 | Phase2/Hellman | Traveling | 25-May-17 |
| Common Yellowthroat | 13 | Phase2/Hellman | Traveling | 25-May-17 |
| Yellow-breasted Chat | 2 | Phase2/Hellman | Traveling | 25-May-17 |
| Song Sparrow | 8 | Phase2/Hellman | Traveling | 25-May-17 |
| California Towhee | 1 | Phase2/Hellman | Traveling | 25-May-17 |
| Hooded Oriole | 2 | Phase2/Hellman | Traveling | 25-May-17 |
| House Finch | 50 | Phase2/Hellman | Traveling | 25-May-17 |
| Lesser Goldfinch | 3 | Phase2/Hellman | Traveling | 25-May-17 |
| American Goldfinch | 2 | Phase2/Hellman | Traveling | 25-May-17 |
| House Sparrow | 2 | Phase2/Hellman | Traveling | 25-May-17 |
| Northern Red Bishop | 2 | Phase2/Hellman | Traveling | 25-May-17 |
| 31 Total # of Species observed | | | | |