

**Los Cerritos Wetlands Authority****Date:** February 1, 2018**To:** Governing Board Members**From:** Mark Stanley, Executive Officer**Subject:** Item 7: Status Report on Workplan Implementation including Los Cerritos Wetlands Stewardship Program and Los Cerritos Wetlands Conceptual Restoration Plan.

**BACKGROUND:** At the September 19, 2006 meeting, the Board adopted the Workplan set forth below. An updated description of the status of each workplan item is detailed in the following table:

<b>February 2018 WORKPLAN STATUS UPDATE</b>		
<b>LCWA Projects</b>		
<b>Task</b>	<b>Description</b>	<b>Status</b>
<b>Potential Funding Sources</b>		
State Water Board Once-through Cooling Interim Mitigation  <b>Funding will depend on mitigation fees collected</b>	The Once-Through Cooling (OTC) Policy requires owners or operators of existing power plants to implement measures to mitigate interim impingement and entrainment impacts resulting from their cooling water intake structures. The interim mitigation period commenced on October 1, 2015 and continues up to and until owners or operators achieve their final compliance deadlines as outlined in the OTC Policy.	Funding will depend on the mitigation fees collected by the State Coastal Conservancy
Wetlands Recovery Project In-Lieu Fee Program Progress Report  <b>Funding will depend on mitigation fees collected</b>	Implementation of the proposed Program will provide a potential funding source to implement projects that fulfill the SCWRP goals, thereby generating substantial ecological benefits within the Program's Service Area, while also providing a cooperative mechanism for Compensatory Mitigation that addresses the needs of multiple federal, state, and local agencies.	Funding will depend on mitigation fees collected  <a href="http://scwrp.org/">http://scwrp.org/</a>

Task	Description	Status
<b>Potential Funding Sources</b>		
Water Quality, Supply, and Infrastructure Improvement Act of 2014 (Proposition 1)	Voters, would authorize \$7.545 billion dollars in general obligation bonds to fund ecosystems and watershed protection and restoration, water supply infrastructure projects, including surface and groundwater storage, and drinking water protection.	Funding is dependent on State Agency Funding Grant cycles  <a href="http://resources.ca.gov/grants/">http://resources.ca.gov/grants/</a>  <a href="http://bondaccountability.resources.ca.gov/p1.aspx">http://bondaccountability.resources.ca.gov/p1.aspx</a>
<b>Capital Projects &amp; Initiatives</b>		
Los Cerritos Wetlands Planning and Restoration Project to complete the environmental review of the CRP per CEQA	Determine if the CEQA document should be a Programmatic or Project Specific level analysis.	Funding is provided to conduct CEQA analysis to engage an environmental consultant contract.  Environmental Science Associates is under contract and the project kick-off meeting occurred on December 4th.
Los Cerritos Wetlands Acquisition of the Bryant Properties	Complete the acquisition of all property owned by the Bryant Family for an addition of 18 acres along the frontage of 2 <sup>nd</sup> Street- Westminster Avenue added to the property preserved for purity as public.	Staff and Legal Counsel are working with Steve Bryant and Kevin Brazil to complete the final Appraisal Report for a secondary state review for the acquisition of Assessor Parcel Nos 7237-020-053; 054.
Los Cerritos Wetlands LLC Restoration and Oil Consolidation Project	The project would implement a comprehensive wetlands restoration project which will restore a privately-owned oil field in the City of Long Beach through creation of a wetlands mitigation bank. The project includes the relocation of oil operations currently located on the Synergy Site and City-owned property to two off-site properties (LCWA's OTD Parcel and Pumpkin Patch site).	The project was approved by the LB Planning Commission on November 30 <sup>th</sup> , 2017. It was then approved by the LB City Council on January 16 <sup>th</sup> , 2018. The project is expected to go before the California Coastal Commission in 2018.  LCWA continues to track all other aspects of the project including the mitigation bank and entitlement process.

Task	Description	Status
<b>Capital Projects &amp; Initiatives</b>		
Option Agreement to transfer properties between Los Cerritos Wetlands LLC(LCWLLC) and the LCWA	LCWLLC and the LCWA executed an option agreement that provides for the exchange of real property. Agreement was signed on 9/2/16 to transfer the LCWA APN 7237-019-809, approximately 5.11 acres for the LCWLLC property described as APNs 7237-017-010; 7237-017-011; 7237-017-012; 7237-0217-013; 7237-017-014; 7237-017-019; 7237-017-805; 7237-017-806; 7237-017-807; 7237-017-808;7237-017-809 approximately 154 acres.	The LCWA received the option agreement funds which will be used to hire consultants to review technical studies.
LCWA Mitigation Policy	Staff will require consultant services in order to assist in the development of the mitigation policy and currently the FY17/18 Budget does not have any unrestricted funds to support authorizing a consultant contract.	The LCWA would require additional funds from its joint partners in order to provide the financial support for authorizing a consultant contract for services and development of the mitigation policy. The cost to develop the mitigation policy would range from \$50,000 to \$100,000. These cost estimates were determined by researching various non-profits, regulatory agencies and other local and state agencies whom have completed similar and comparable mitigation policies.
DWP Parcel (PCH) at Pacific Coast Highway	This site poses significant opportunities for enhancing public access to the eastern side of the Los Cerritos Wetlands area adjoining the San Gabriel River.	Recently the LCWA was made aware the City of Los Angeles would replace the existing fence-line with an 8-ft tall, tight-meshed, chain-link fence with razor wire around the entire Haynes Cooling Channel. This fencing project will impact over 2,000 feet of LCWA fence line, including sections that run along sensitive habitat at Zedler Marsh. A Coastal Development Permits was approved that included conditions requested by the LCWA. DWP has not made progress toward implementing this project on the ground.

Task	Description	Status
<b>City of Long Beach Pending Environmental Documents</b>		
City of Long Beach Southeast Area Specific Plan (SEASP)	The City of Long Beach continues to work on the Southeast Area Specific Plan which covers approximately 1,500-acres of southeast Long Beach. <a href="http://www.lbds.info/seadip_update/">http://www.lbds.info/seadip_update/</a>	<p>The Draft Environmental Impact Report was approved by City of Long Beach Planning Commission and Long Beach City Council with some changes to the document. Buildings over 7 stories tall are not allowed on the Marketplace Property, but can be allowed on the other sites under certain conditions. The plan includes a Wetlands Mitigation Fund that will be used to offset potential impacts to Los Cerritos Wetlands habitat. The LCWA is named in the document as an entity that the City will consult when developments are proposed.</p> <p>However, approval of the project's DEIR has been stalled since the Los Cerritos Wetlands Land Trust filed a writ of mandate to CA Superior Court following the City Council's decision stating the City was unlawful to approve SEASP.</p>
Los Cerritos Wetlands LLC (LCWLLC) Los Cerritos Wetlands Restoration and Oil Consolidation Project	The project is comprised of four sites located at: 6422 E. 2nd Street (LCW LLC Oil Field Site); 6701 E. Pacific Coast Highway (Pumpkin Patch site); northeast corner of Studebaker Road and 2nd Street (LCWA OTD Parcel); and 2nd Street and Shopkeeper Road (City-Property site) in the City of Long Beach. <a href="http://www.lbds.info/planning/environmental_planning/environmental_reports.asp">http://www.lbds.info/planning/environmental_planning/environmental_reports.asp</a>	<p>Draft EIR was completed and released for public comment in July 2017. The LCWA's team of consultants provided comments on the Draft EIR directly to the applicant. The mitigation bank prospectus has been reviewed by the agencies after no public comment was received.</p> <p>The EIR went before and was approved by the Planning Commission on November 30<sup>th</sup> 2017 and the LB City Council on January 16<sup>th</sup>, 2018. The EIR will go before the CA Coastal Commission in 2018. The LCWA and BOMP are also working with the City to make amendments to the Local Coastal Plan.</p>
PCH & 2nd Project Initial Study PCH & 2nd NOP	This project is located at 6400 E. Pacific Coast Highway (bounded by 2 <sup>nd</sup> Street to the north, Pacific Coast Highway to the east, a retail shopping center (Marina Shores Shopping Center) to the south, and Marina Drive to the west. <a href="http://www.lbds.info/planning/environmental_planning/environmental_reports.asp">http://www.lbds.info/planning/environmental_planning/environmental_reports.asp</a>	<p>The proposed project involves demolition of the existing Seaport Marina Hotel and construction of a commercial center totaling 245,000 square feet (216,000 square feet of retail space and 29,000 square feet of restaurant space) and 1,172 on-site parking spaces (1,044 space three-level parking structure and 128 surface parking spaces). The proposed commercial structures would be one- and two-story buildings with a maximum height of 35 feet.</p>



Task	Description	Status
<b>Lease Agreements</b>		
<p>OTD/Edison Parcel Los Angeles County APN 7237-019-809</p> <p>Ellis Equipment, Inc. Lease Agreement</p> <p>Lease Fee = \$2,090 per month</p>	<p>The OTD Parcel is located on the northeast corner of Studebaker road and 2nd Street in the City of Long Beach and commonly referred to as the 'Edison Parcel' or 'Offer To Dedicate (OTD) Parcel.'</p>	<p>Ellis lease agreement utilizes only a portion of the OTD Parcel for storage of construction material. Ellis lease agreement has been amended to a month-to-month lease.</p>
<p>OTD/Edison Parcel Los Angeles County APN 7237-019-809</p> <p>D &amp; S Washout Systems Lease Agreement</p> <p>Lease Fee = \$950 per month</p>	<p>The OTD Parcel is located on the northeast corner of Studebaker road and 2nd Street in the City of Long Beach and commonly referred to as the 'Edison Parcel' or 'Offer To Dedicate (OTD) Parcel.'</p>	<p>D &amp; S Washout Systems Lease Agreement utilizes a portion of the OTD parcel for the storage of work trucks and construction materials. The lease agreement has been amended to a month-to-month lease.</p>
<p>California State Lands Commission Lease Agreement PRC9005.9. Orange County APNs: 043- 160-47; 043-160-36; 043-160-45; and 043- 160-53</p> <p>August 14, 2012 through August 13, 2022</p>	<p>The State Lands Commission issued the LCWA a lease agreement for four parcels approximately totaling four acres adjacent to the Los Cerritos Wetlands Authority Hellman/Phase 2 in the City of Seal Beach.</p>	<p>Staff coordinates with SLC office for ongoing repairs of fence property and continues to stage the Los Cerritos Wetlands Stewardship Program from this site.</p>
<p>City of Long Beach Marketplace Marsh License Agreement for Los Angeles County APN 7237-020-21</p> <p>June 7, 2010 through June 30, 2020</p>	<p>The property is approximately 29.38-acres south of 2nd Street</p>	<p>The LCWA recently updated the license agreement to allow tours of the wetlands and extended the license agreement through June 30, 2020.</p>

Task	Description	Status
<b>Grants – COMPLETED</b>		
A total of 11 grants have been completed by the LCWA and LCWLT	A total of \$6,228,400 grant funds have been acquired and applied towards acquisition, restoration studies, restoration projects, and education programs.	See <a href="#">link</a> for details on all completed grants.
<b>Grants – ACTIVE</b>		
National Coastal Wetlands Conservation Grant Application  <u><b>Active</b></u>	The State Coastal Conservancy (SCC) applied on behalf of the LCWA for the NCWC grant.  Performance Period January 29, 2013 through December 31, 2017  Total Funding \$1,000,000 Funding Remaining \$1,000,000	The National Coastal Wetlands Conservation Grant was submitted on July 13, 2012 by the SCC for the acquisition of the Steam Shovel Slough. The SCC was awarded the \$1,000,000 grant for the acquisition of Steam Shovel Slough on January 29, 2013. The funds have been re-assigned to the Bryant acquisition.  An extension to for this grant was been approved. The new deadline to use these funds is December 31 <sup>st</sup> , 2018.
State Coastal Conservancy Proposition 1  Los Cerritos Wetlands Planning and Restoration Project  <u><b>Active</b></u>	Grants funds to complete the environmental review of the CRP per CEQA. Environmental review of the CRP's three proposed alternatives or a hybrid alternative.  Performance Period February 1, 2017 through June 30, 2019  Total Funding \$500,000 Funding Remaining: \$500,000	The LCWA was successfully awarded the grant funds for the CEQA Planning Document, implementation of the project has commenced.
San Gabriel and Lower Los Angeles Rivers and Mountains Conservancy Grant State Coastal Conservancy Proposition 1  Los Cerritos Wetlands Planning and Restoration Project Proposition 1 Grants  <u><b>Active</b></u>	Grants funds to complete the environmental review of the CRP per CEQA. Environmental review of the CRP's three proposed alternatives or a hybrid alternative.  Performance Period February 1, 2017 through June 30, 2019  Total Funding \$350,000 Funding Remaining: \$350,000	The LCWA was successfully awarded the grant funds for the CEQA Planning Document, implementation of the project has commenced.

Task	Description	Status
<b>Grants – ACTIVE</b>		
<p>San Gabriel and Lower Los Angeles Rivers and Mountains Conservancy Grant State Coastal Conservancy Proposition 1</p> <p>Los Cerritos Wetlands Acquisition of the Bryant Properties</p> <p><b><u>Active</u></b></p>	<p>LCWA is seeking to acquire the frontage and remaining Bryant-Dakin Properties located along 2<sup>nd</sup> Street/Westminster Avenue in the City of Long Beach totaling approximately 18 acres (Los County Assessor Parcel Nos 7237-020-053 and 7237-020-054).</p> <p>Performance Period February 1, 2017 through June 30, 2018</p> <p>Total Funding \$1,000,000 Funding Remaining: \$1,000,000</p>	<p>The LCWA was successfully awarded the grant funds and negotiations will commence immediately.</p> <p>Appraisals are being reviewed.</p>
<b>Consultant Contracts - COMPLETED</b>		
5 Completed Consultant Contracts	Please see <a href="#">link</a> for details.	
<b>Consultant Contracts - ACTIVE</b>		
<p>LCWA16003 Tidal Influence, LLC Property and Project Management Services</p> <p><b><u>Active</u></b></p>	<p>The LCWA authorized a contract to Tidal Influence for grant and project management services, property management services for all the LCWA properties, coordination of the Stewardship Program and on-call services as necessary.</p> <p>Performance Period March 1, 2017 through March 1, 2019</p> <p>Total Funding: \$59,000 Remaining Funding: \$35,700</p>	<p>Please see attached Land Management Reports from October – December 2017.</p>

Task	Description	Status
<b>Consultant Contracts - ACTIVE</b>		
LCWA 13003 Los Cerritos Wetlands Stewards Homeless Liaison Contract Amended  <u><b>Active</b></u>	<p>The Los Cerritos Wetlands Stewards and the LCWA have a mutual interest in the implementation of the Stewardship Program which will promote and provide leadership in conservation for educating members as well as the community to further the appreciation of the wetlands habitat conservation.</p> <p>Performance Period January 1, 2016 through December 30, 2017</p> <p>Total Funding: \$8,700 Remaining Funding: \$0.00</p>	<p>The contract addresses the safety and security of the LCWA properties and meets the LCWA goals and objectives. Currently the Los Cerritos Wetlands Stewards are coordinating any removal of homeless encampments at several locations within the LCWA properties.</p>
<b>Memorandum of Understanding/Agreements</b>		
LCWA08008 Signal Hill Petroleum, Inc. Coastal Development Permit for Vegetation Removal  LCWA Phase 1 Properties  <u><b>Active</b></u>	<p>Signal Hill Petroleum, Inc. conducts the following activities (1) removing vegetation, debris and soil from the storm water collection and retention system, (2) controlling vegetation surrounding all oil pumps, electrical poles, and pipelines, and (3) removing vegetation surrounding all oil production facilities and buildings.</p> <p>Performance Period March 1, 2016 through December 30, 2017</p> <p>Total Funding: \$20,000 Remaining Funding: \$0.00</p>	<p>Tidal Influence was contracted to manage MOA.</p> <p>Signal Hill Petroleum, Inc. annually provides \$10,000 to offset their impacts from proposed work. The LCWA is implementing the 2017 work plan as approved by the Coastal Commission in March 2016.</p> <p>LCWA will be submitting the 2016-2017 report before February 15<sup>th</sup>, 2018 and creating a spending plan for 2018-2019 that will extend this project.</p>
LCWA13002 Southern California Edison Company Memorandum of Agreement  <u><b>Active</b></u>	<p>The LCWA entered into a Memorandum of Agreement with Southern California Edison Company to accept funds to provide out-of-kind compensatory mitigation for impacts to shoreline habitat at Catalina Island.</p> <p>Performance Period June 14, 2014 through June 30, 2020</p> <p>Total Funding: \$25,000 Remaining Funding: \$4,634.93</p>	<p>Tidal Influence was contracted to manage this MOA. Staff has completed the Habitat Mitigation and Monitoring Plan which allowed for procurement and installation of 425 salt marsh plants.</p> <p>Tidal Influence will be submitting the year 3 monitoring report in spring 2018 to Southern California Edison for the purpose of presenting the baseline conditions of the 0.16 acre restoration site at Zedler Marsh and comparing it to the data collected in previous years.</p>

<b>LCW Stewardship Program</b>		
<b>Task</b>	<b>Description</b>	<b>Status</b>
<b>Potential Funding Sources</b>		
City of Long Beach Measure A, Public Safety, Infrastructure Repair and Neighborhood Services Measure	The City of Long Beach established a one cent (1%) transactions and use (sales) tax for six years, generating approximately \$48 million annually, declining to one-half cent for four years and then ending, requiring a citizens' advisory committee and independent audits, with all funds remaining in Long Beach.	The City of Long Beach allocated an estimated \$500,000 for restoration work for the Los Cerritos Wetlands. The status of the funding is pending.
Los Angeles County: Safe, Clean Neighborhood Parks, Open Space, Beaches, Rivers Protection, and Water Conservation Measure Section 6(e); subsection 2(A) Supervisor Janice Hahn, Fourth District  Potentially \$463,983 in funding	To replace expiring local funding for safe, clean neighborhood/city/county parks; increase safe playgrounds, reduce gang activity; keep neighborhood recreation/senior centers, drinking water safe; protect beaches, rivers, water resources, remaining natural areas/open space; 1.5 cents will be levied annually per square foot of improved property in Los Angeles County, with bond authority, requiring citizen oversight, independent audits, and funds used locally.	Up to fifteen percent (15%) shall be set aside and designated as the maintenance and servicing amount, and shall be used only to maintain and service, including resource protection activities for the capital outlay projects funded by the District... ...The maintenance and servicing amount shall be allocated each year as follows: ...point five percent (0.5%) to the Los Cerritos Wetlands Authority...  An estimated \$92,796,612 in Annual Taxes to be collected.
<b>Education Programs</b>		
Public Access Improvement and Wetlands Restoration	Restoration and enhancement of existing wetlands function is one of the primary objectives of the LCWA. Public access for wildlife viewing and enjoyment may involve site improvements.	LCWA has successfully partnered with Los Cerritos Wetlands Land Trust (LCWLT) and they have successfully applied for and received several grants that provide for the Los Cerritos Wetlands Stewardship Program monthly nature walks through December 2017. Please refer to the attached Exhibit B: Los Cerritos Wetlands Stewardship Program updates for a full report.

Task	Description	Status
<b>Capital Projects &amp; Initiatives</b>		
<p>County of Orange, OC Public Works Contract (MA-080-15010071)</p> <p><b><u>Active</u></b></p>	<p>Orange County Public Works entered into contract with LCWA to provide wetland restoration services and supplies including five years of monitoring reports from the LCWA's Stewardship Program</p> <p>Performance Period September 1, 2014 through September 1, 2019</p> <p>Total Funding \$155,500 Funding Remaining: \$35,362.50</p>	<p>Tidal Influence was contracted to manage and implement the project, planting occurred on the Orange County mitigation site, and Staff continues to monitor the progress on the project.</p> <p>LCWA staff submitted the Year 3 Monitoring Report on December 18, 2017.</p>
<p>Tarplant Mitigation Project - Ascon</p> <p><b><u>Active</u></b></p>	<p>The LCWA entered into a Memorandum of Agreement with Ascon to accept mitigation funds for the Southern Tarplant Mitigation Plan for a five year mitigation plan to grow and monitor Southern Tarplant at Zedler Marsh</p> <p>Performance Period November 3, 2016 through November 1, 2021</p> <p>Year 1 Funding: \$96,070 Year 1 Remaining Funding: \$21,000 Year 2 Funding: \$62,410 Year 2 Remaining Funding: \$62,410</p>	<p>Tidal Influence was contracted to manage and implement this project, seeding, and monitoring plan at Zedler Marsh. Staff continues to monitor the progress on the project.</p> <p>A large seeding effort and regular invasive species control were conducted in the Winter of 2017. The year 2 work plan will be initiated in February 2018.</p>
<b>Grants – COMPLETED</b>		
<p>A total of 11 grants completed by the LCWA and LCWLT</p>	<p>A total of \$6,228,400 grant funds were acquired and used towards acquisition, restoration studies, restoration projects, and education programs.</p>	<p>See for details on all completed grants.</p>

Task	Description	Status
<b>Grants – ACTIVE</b>		
<p>The Orange County Community Fund</p> <p>Warne Family Endowment Fund for Endangered Species Protection Grant</p> <p><b><u>Active</u></b></p>	<p>The LCWLT applied for the Warne Foundation Grant Program to fund Belding's Savannah Surveys at Los Cerritos Wetlands.</p> <p>Performance Period January 2017 through December 31, 2018</p> <p>Total Funding: \$81,000 Funding Remaining: \$50,000</p>	<p>Belding's Savannah Sparrow surveys will be conducted twice a month during breeding and nesting season to determine breeding territories for pairs of Belding's. A portion of the grant also goes towards restoring Belding's Savannah Sparrow habitat outside of nesting season and 6 months of Stewardship Program 1st Saturday Restoration Events and 3rd Friday Trash Clean-ups in LCW.</p> <p>2017 Progress:</p> <ul style="list-style-type: none"> <li>- 16 Belding's Savannah Sparrow surveys have been completed at LCW.</li> <li>- 4 3rd Friday trash cleanups hosted at Zedler Marsh</li> <li>- 2 1st Saturday Restoration Events hosted</li> <li>- 110 native plants installed</li> <li>- 400 lbs of nonnative vegetation removed</li> <li>- 200 lbs of trash removed</li> <li>- 110 volunteers have contributed towards restoration and trash cleanup programs</li> </ul> <p>This grant was reapplied for and approved for a second year of monitoring and restoration efforts.</p>
<p>California Native Plant Society (CNPS) South Coast Chapter</p> <p>Conze Bequest Grant Program</p> <p>Active</p>	<p>The LCWLT applied for the CNPS Conze Bequest Grant Program to fund a native plant demonstration garden along the Zedler Marsh Trails.</p> <p>Performance Period January 2017 through February 2018</p> <p>Total Funding: \$6,000 Funding Remaining: \$3,958.90</p>	<p>Work began in May 2017 with the removal of non-native species and growing of native plants, irrigation install, and tilling of the soil. A progress report was sent to CNPS in August 2017. Planting of native plants began in September 2017 with the planting of 125 native wetlands and upland species and will continue through the end of the project in February 2018</p> <p>A final report will be submitted in February 2018.</p>
<p>California State Coastal Conservancy</p> <p>Explore the Coast Grant Program</p> <p>Approved</p>	<p>The Los Cerritos Wetlands Land Trust (LCWLT) applied for the Explore the Coast Grant Program to fund education programs at Zedler Marsh.</p> <p>Total Funding: \$15,560 Funding Remaining: \$15,560</p>	<p>The LCWLT will provide bus transportation to and from Zedler Marsh for 15 field trips of LBUSD 3rd grade students.</p>

Memorandum of Understanding/Agreements		
<p>Signal Hill Petroleum, Inc. (SHPI) Memorandum of Agreement</p> <p><b><u>Active</u></b></p>	<p>The LCWA entered into a Memorandum of Agreement with SHPI to use specific areas within the SHPI current exclusive easement for growth of Southern Tarplant under the Southern Tarplant Mitigation Plan.</p> <p>Performance Period February 3, 2017 through perpetuity</p>	<p>The LCWA will have access to these specific areas within the SHPI exclusive easement into perpetuity.</p>
<p>LCWA13002 Southern California Edison Company Memorandum of Agreement</p> <p><b><u>Active</u></b></p>	<p>The LCWA entered into a Memorandum of Agreement with Southern California Edison Company to accept funds to provide out-of-kind compensatory mitigation for impacts to shoreline habitat at Catalina Island.</p> <p>Performance Period June 14, 2014 through June 30, 2020</p> <p>Total Funding: \$25,000 Remaining Funding: \$4,634.93</p>	<p>Tidal Influence was contracted to manage MOA. Staff has completed the Habitat Mitigation and Monitoring Plan which allowed for procurement and installation of 425 salt marsh plants.</p> <p>Tidal Influence will be completing the year 3 monitoring report for Southern California Edison for the purpose of presenting the baseline conditions of the 0.16 acre restoration site at Zedler Marsh and comparing it to this data collected this past year.</p>
<p>LCWA13001 Aquarium of the Pacific Memorandum of Agreement</p> <p><b><u>Active</u></b></p>	<p>The LCWA entered into a Memorandum of Agreement in order to provide a citizen science sea turtle monitoring program for the general public.</p> <p>Performance Period March 1, 2016 through March 1, 2018.</p>	<p>For updates on the citizen science sea turtle monitoring program, please visit <a href="http://www.aquariumofpacific.org/give/member-ship/seaturtles">http://www.aquariumofpacific.org/give/member-ship/seaturtles</a></p>
<p>LCWA13000 Los Cerritos Wetlands Land Trust Memorandum of Agreement</p> <p><b><u>Active</u></b></p>	<p>The LCWA entered into a MOA with the Los Cerritos Wetlands Land Trust for stewardship services of the Los Cerritos Wetlands Stewardship Program</p> <p>Performance Period March 1, 2016 through March 1, 2018.</p>	<p>Please see the attached Los Cerritos Wetlands Stewardship Program Summary Report.</p>



Task	Description	Status
<b>Memorandum of Understanding/Agreements</b>		
Memorandum of Agreement with the El Dorado Audubon  <b><u>Active</u></b>	El Dorado Audubon is working with the LCWA to develop bird walks at LCWA Phase 2 properties. Performance Period March 1, 2016 through March 1, 2018.	Please see the attached El Dorado Audubon Society report for a summary of the Los Cerritos Wetlands Nature/Bird Walks. For more information, please visit <a href="http://eldoradoaudubon.org/">http://eldoradoaudubon.org/</a>
Sea and Sage Monthly Bird Counts	Darrell Wilson conducts bird counts using a research permit on the Hellman Properties.	Bird counts from monthly surveys are summarized in reports submitted to LCW Ebird account and are provided in an attached summary report.



Land Management and  
Stewardship Program Reports



## Field Report Memorandum

**To:** Mark Stanley, LCWA

**From:** Marcelo Ceballos, Tidal Influence, LLC

**Cc:** Eric Zahn, Alene Spindel, & Tia Blair, Tidal Influence, Lenny Arkinstall, Salian Garcia

**Date:** November 7th, 2017

**Subject:** Land Management Field Report

Sites Inspected: Zedler Marsh, Bryant Lease West, Hellman/Gum Grove, State Lands Parcel, & OTD Parcel

Inspection Date: October 27<sup>th</sup>, 2017

*Note: The locations of critical observations and issues noted in this document are called out on the map on the final page. Photos of certain issues are attached at the end of the report.*

### All LCWA Properties

---

1. All LCWA property gate combinations have been changed and the 'Gate Access and Safety Map' has been distributed.

### OTD Parcel

---

#### 1. Gates –

- a. The entrance gate needs barbed wire installed on it. A small gap between two posts needs to be closed.  
**We recommend hiring a fence contractor. Tidal Influence staff will find contractors and get estimates for this work.**  
(See photos)
- b. OTD Parcel notice sign was updated and posted.  
**We still recommend adding a longer chain to allow the lessee greater ease of use and lower likelihood of a repeat lock out occurrence. Tidal Influence will send LCWA staff a purchase request for the new chain.** (See photos)

#### 2. Trails –

- a. Okay, a rough path was created along the perimeter of the property to allow for patrols and ease of trash removal.

#### 3. Fences –

- a. Barbed wire needs to be replaced on the portion of the fence line that is nearest the entrance gate.  
**We recommend hiring a fence contractor. Tidal Influence staff will find contractors and get estimates for this work.**  
(See photos)

#### 4. Homeless –

- a. A substantial amount of litter, trash, and stolen materials still exist on-site, with additional trash added since last month's patrol. A rough path has been cleared to allow easier access for the removal of trash. Attached is map with the large trash pile locations. **We recommend this trash be disposed of ASAP by the LCWA's homeless contractor.**  
(See photos)
- b. Tree branches have been broken off and are gathered in piles of firewood. **We recommend clearing/breaking this apart to reduce its potential as a fire hazard. Tidal Influence staff will coordinate with the LCWA's homeless contractor to minimize this hazard.**

## Zedler Marsh

---

5. Gates – OK
6. Trails – OK
7. Fences – OK
8. Homeless – OK
9. Other –
  - a. A number of golf balls have been found on site, likely from the same citizens that were seen hitting golf balls onto the Bryant Lease West parcel from the levee. This is a major safety hazard. **We recommend working with the LCWA's homeless contractor to resolve the encampments around the property in order to reduce the likelihood of this kind of dangerous activity continuing.** (See photo)
  - b. **Note:** We recommend updating the signage at the entrance gate to reduce the amount of unapproved visitors once the property has been acquired by the LCWA.

## State Lands Parcel

---

10. Gates – OK
11. Trails – OK
12. Fences – OK
  - a. Tidal Influence staff cleared the driveway fence line of overgrown vegetation (See photos)
13. Homeless –
  - a. A cache of homeless materials were found hidden under trees on October 19<sup>th</sup>. The LCWA's homeless contractor was contacted to collect and dispose of the materials. During the patrol on October 27<sup>th</sup> some of the materials were taken, some hidden again, and a few were left out. **We recommend trimming the trees/shrubs to increase visibility and having the LCWA's homeless contractor (See photos)**

## Hellman

---

14. Gates – OK
15. Trails – OK
16. Fences –
  - a. A number of the fence breaches have been discovered all along the Gum Grove fence line in addition to the fence segments that were monitored earlier in the year. (See photos) **We recommend hiring a fence contractor. Tidal Influence staff will find contractors and get estimates for this work. For more details see LCWA Property Fence Repair File.**
  - b. A Surf Place Resident indicated that the dry brush on the LCWA's property was too close to the houses surrounding the property. A survey of the dry brush to house distance was conducted by Tidal Influence Staff. The data is compiled in an excel file 'Hellman Brush to House Distance'. **Clearing all of the dry brush could be costly and time consuming so we recommend that unless the property owners have no shrubs/trees or dry vegetation on their property AND the dry brush on LCWA is less than 30 feet from the main structure, then we will not make it a priority to clear the vegetation on LCWA property. Tidal Influence staff will contact and work with residents to try and remediate the concerns of the residents to reduce potential hazards as much as possible.** (See attached file)
  - c. Another property owner was talked to during the survey and they wanted to get the overhang of a tree growing on the LCWA's property trimmed to reduce the debris that was falling into their yard. They indicated that they would pay for the removal and had tried to get permission from the coastal commission in past years but were denied. **This issue will be looked into by Tidal Influence staff to try and insure a healthy and prosperous relationship between the LCWA and its surrounding neighbors.**
17. Homeless –
  - a. **A homeless trespasser** was caught inside of and going through the facilities last month. The day after the event the trespasser was photographed trying to use the emptied lockbox to reenter the facility. Since the incident the lockbox was reset and relocated by Tidal Influence Staff. **We recommend the LCWA's Homeless contractor work with the homeless to reduce the chances of this occurring again. (See photos)**
18. Other –
  - a. A number of trespassers have been observed on our wildlife cameras. (See photos) **We recommend continued coordination with SBPD to increase/maintain site patrols.**

## Bryant Lease West

---

19. Gates – All the locks and chains for the gates along levee have been removed and all gates are open. (See photos) **We recommend LCWA staff meeting with LA County to determine a new approach to securing this property. We recommend that lock boxes be installed on the gates. Another possibility replacing the gates with a stronger material to prevent future breaches.**
20. Trails – OK
21. Fences –
  - a. Large breach along the East side of the property. (See photo) **We recommend hiring a fence contractor. Tidal Influence staff will find contractors and get estimates for this work.**
  - b. Small breach and missing barbed wire along the West side of the property on the entrance gate. (See photo) **We recommend hiring a fence contractor. Tidal Influence staff will find contractors and get estimates for this work.**
22. Homeless – **2 ACTIVE ENCAMPMENTS** exist on this property, one of which has been reported since June 2016. Trash is accumulating near the encampments and needs to be removed. (See Photos) **We recommend that these remaining encampments be immediately remediated and the trash be removed by the LCWA's Homeless contractor.**
23. Other – Citizens (likely from the encampments) were observed hitting golf balls into the property from the levee (see photo). **This is a major safety hazard to lessee's, visitors, staff, and wildlife. We recommend working with the LCWA's homeless contractor to resolve this issue.**

## Map

The photos of the issues and observations detailed above are labeled by number. The number on the map below indicates the location of these issues and observations.





# OTD Parcel



**September**

Locked out of daisy chain



**October**

Sign Updated, New combination on lock



# OTD Parcel



Trash all along roadside, along hilltop, and along outer edge of fencing



# OTD Parcel



Large Trash Pile Locations



# OTD Parcel



Fencing in need of upgrades, repairs, and vegetation clearance





# OTD Parcel



Fallen branches in pile, may be used as firewood



# Zedler



**Golf balls being hit onto  
property from levee**



**Golf ball hit into rare plant  
restoration area**

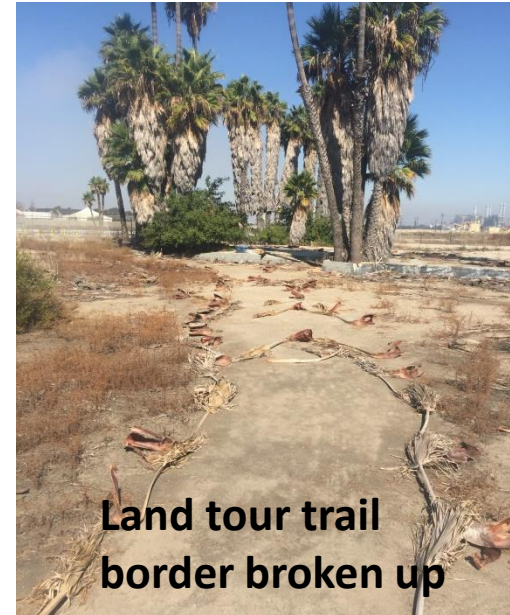


# State Land Parcel

October 19 → October 27



October 19 → October 27



Land tour trail  
border broken up



Homeless materials stored/hidden under tree



# State Lands Parcel



Overgrown Vegetation along State Land Parcel Cleared

# Hellman

## Homeless Encampment & Facilities Break-in Update for October



**(9/22)**  
Initial incident/break  
in at around 9:30 am



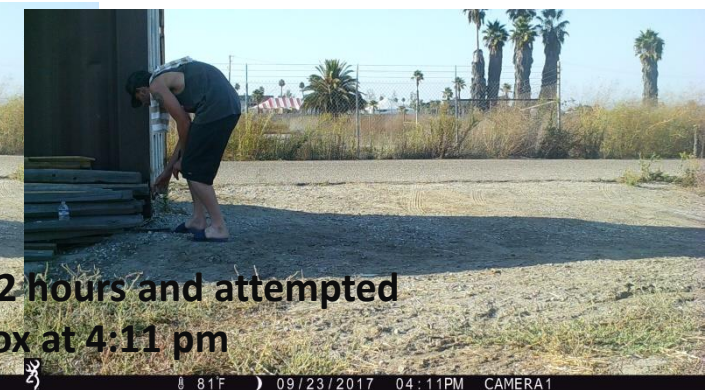
**(9/22) Checked in at 2:16 pm**



**(9/23) Trespasser came back  
the next day at 2:26 pm**



**(9/23)**  
Was there for nearly 2 hours and attempted  
to open empty lockbox at 4:11 pm



**(9/23) Checked in at 6:46 pm**  
No signs of trespasser



# Hellman



Barbed wire absent/damage above  
back entrance gates

Signs of fence breach  
behind Surf Place House





# Hellman



**Two Fence lines segments bent and warped down  
Give easy access to property from Gum Grove Park side**



# Hellman



**Several points along Gum Grove Fence line are damaged/breached**





# Bryant Lease West





# Bryant Lease West

## Encampment #1



**This encampment has been reported for over 16 months and has not been remediated**

# Bryant Lease West

## Encampment #2



October

Encampment material accumulation moving toward oil operations



Box of golf balls



Encampment #2 during  
September Patrol

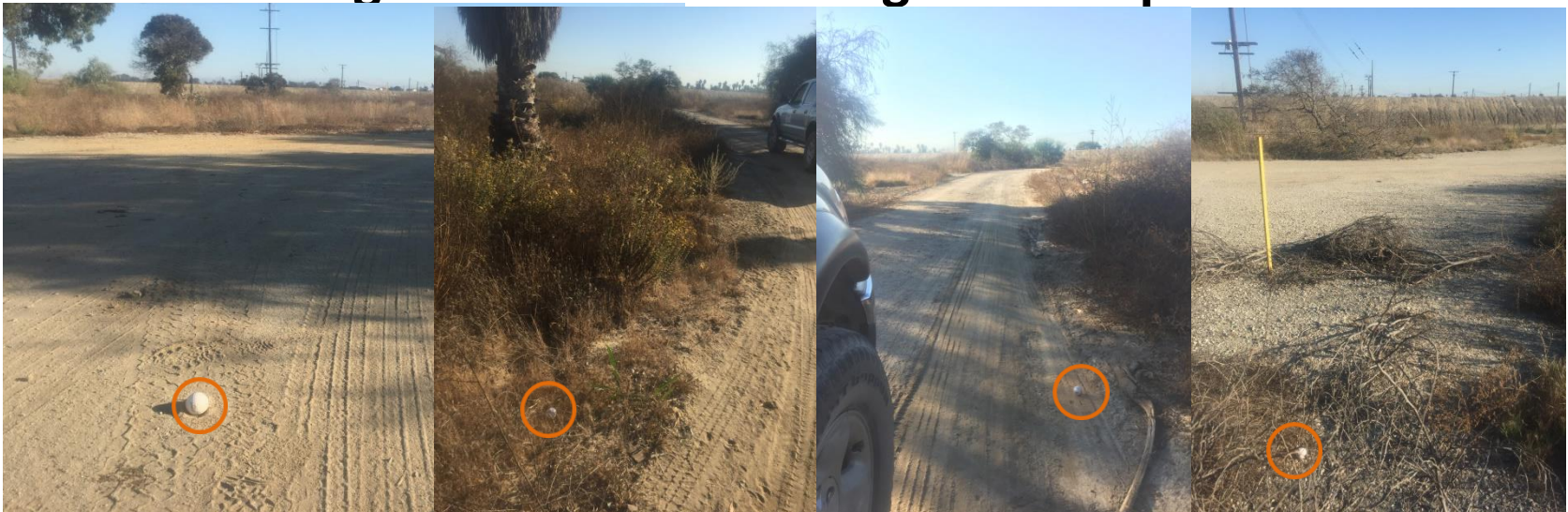
Golf club and tee found next to encampment



# Bryant Lease West



## More golf balls found during October patrol



## Field Report Memorandum

**To:** Mark Stanley, LCWA

**From:** Marcelo Ceballos, Tidal Influence, LLC

**Cc:** Eric Zahn, Tidal Influence, Lenny Arkinstall, Salian Garcia

**Date:** November 7th, 2017

**Subject:** Land Management Field Report

Sites Inspected: Zedler Marsh, Bryant Lease West, Hellman/Gum Grove, State Lands Parcel, & OTD Parcel

Inspection Date: October 27<sup>th</sup>, 2017

*Note: The locations of critical observations and issues noted in this document are called out on the map on the final page. Photos of certain issues are attached at the end of the report.*

### OTD Parcel

---

1. Gates –

- a. The entrance gate needs barbed wire installed on it. A small gap between two posts needs to be closed.  
**We recommend hiring a fence contractor. Tidal Influence staff is coordinating with fence contractors to get estimates for this work.** (See photos)
- b. OTD Parcel was broken into earlier in the month. A leasee lock was cut and the gate was breached. Supplies and materials were stolen from a container belonging to the leasee.  
**We recommend replacing this fence gate and/or locking mechanism. Tidal Influence staff is coordinating with fence contractors to get estimates for this work.** (See photos)

2. Trails –

- a. Okay - A rough path was created along the perimeter of the property to allow for patrols and ease of trash removal.

3. Fences –

- a. Barbed wire needs to be replaced on the portion of the fence line that is nearest the entrance gate.  
**We recommend hiring a fence contractor. Tidal Influence staff is coordinating with fence contractors to get estimates for this work.** (See photos)

4. Homeless –

- a. A substantial amount of litter, trash, and stolen materials exist on-site, with additional trash being added since last months patrol. A rough path has been cleared to allow easier access for the removal of trash. Attached is a map with the large trash pile locations. (See photos) **We recommend this trash be disposed of ASAP by the LCWA's homeless contractor on a regular basis.** (See photos)
- b. Leasee employees on site during the land patrol indicated that there were two homeless persons who regularly visited the perimeter of the site and would dump trash. **We recommend working with the LCWA's homeless contractor and LBPD to carry out patrols to keep the site more secure. Additionally Tidal Influence staff are coordinating with fence contractors to get estimates to repair and possibly upgrades sections of the current fenceline and gate entrance.**

## Zedler Marsh

---

5. Gates – OK
6. Trails – OK
7. Fences – OK
8. Homeless – OK
9. Other –
  - a. A number of golf balls have been found on site, likely from the same citizens that were seen hitting golf balls onto the Bryant Lease West parcel from the levee. This is a major safety hazard. **We recommend working with the LCWA's homeless contractor to resolve the encampments around the property in order to reduce the likelihood of this kind of dangerous activity continuing.** (See photo)
  - b. **Note:** During the month of November, Truesdell Corporation cleared vegetation on Bryant property to create a staging area for their materials and has been using it during the month of November to store materials and machines to complete repairs on the 2<sup>nd</sup> Street bridge. (See Photos)
  - c. **Note:** We recommend updating the signage at the entrance gate to reduce the amount of unapproved visitors once the property has been acquired by the LCWA.

## State Lands Parcel

---

10. Gates – OK
11. Trails – OK
12. Fences – OK
  - a. Last month Tidal Influence staff cleared the driveway fence line of overgrown vegetation. This month the overgrown vegetation along the frontage on PCH was cleared, likely by Caltrans. The entire sites fence perimeter is now clear of overgrown vegetation. (See photos)
13. Homeless –
  - a. A cache of homeless materials were found hidden under trees on October 19<sup>th</sup>. The LCWA's homeless contractor was contacted to collect and dispose of the materials. During November trash bags stored under the trees were uncovered and left out for collection, and these bags were repeatedly placed back under the tree. This indicated trespassers are visiting the site regularly. **We recommend trimming the trees/shrubs to increase visibility and coordinating with the LCWA's homeless contractor to reduce the amount of homeless persons frequenting this site.** (See photos)

## Hellman

---

14. Gates – OK
15. Trails –
  - a. Gopher holes coming from neighborhoods and Gum Grove Park have been observed on the property near fence lines.
  - b. Minor trail maintenance will be conducted by Tidal Influence staff before the next land tour.
16. Fences –
  - a. A number of the fence breaches have been discovered all along the Gum Grove fence line in addition to the fence segments that were monitored earlier in the year. (See photos) **We recommend hiring a fence contractor. Tidal Influence staff is coordinating with fence contractors to get estimates for this work.**
  - b. A Surf Place Resident indicated that the dry brush on the LCWA's property was too close to the houses surrounding the property. A survey of the dry brush to house distance was conducted by Tidal Influence Staff. The data is compiled in an excel file 'Hellman Brush to House Distance'. **Tidal Influence staff has met with the Orange County Fire Authority in the field to address these issues and has received an official notice and guidelines to resolve this issue. Tidal Influence staff has started this dry brush clearance and will complete this clearance in December to comply with all Orange County Fire Authority guidelines.** (See Photos)
  - c. Note - Another property owner was talked to during the survey and they wanted to get the overhang of a tree growing on the LCWA's property trimmed to reduce the debris that was falling into their yard. They indicated that they would pay for the removal and had tried to get permission from the coastal commission in past years but were denied. **This issue will be looked into by Tidal Influence staff to try and insure a healthy and prosperous relationship between the LCWA and its surrounding neighbors.**
17. Homeless – OK



## Bryant Lease West

---

18. Gates – All the locks and chains for the gates along levee have been removed and all gates are open. (See photos)  
**We recommend LCWA staff meeting with LA County to determine a new approach to securing this property. We recommend that lock boxes be installed on the gates. Another possibility is replacing the gates with a stronger material to prevent future breaches. Tidal Influence staff is also coordinating with fence contractors to get estimates for this work.**
19. Trails – OK
20. Fences –
  - a. Large breach along the East side of the property. (See photo) **We recommend hiring a fence contractor. Tidal Influence staff is coordinating with fence contractors to get estimates for this work.**
  - b. Small breach and missing barbed wire along the West side of the property on the entrance gate. **We recommend hiring a fence contractor. Tidal Influence staff is coordinating with fence contractors to get estimates for this work.**
  - c. The fence next to the 2<sup>nd</sup> Street access gate has been breached, making this gate ineffective. **We recommend LCWA staff meeting with LA County to determine a new approach to securing this property.**
21. Homeless –
  - a. **2 ACTIVE ENCAMPMENTS** exist on this property, one of which has been reported since June 2016. Trash is accumulating near the encampments and needs to be removed. Additionally, these individuals and their materials were present during a land tour given to the public. Inhabitants were also present during land patrol; photos captured are from land tour. (See Photos) **We recommend that these encampments be immediately remediated and the trash be removed by the LCWA's Homeless contractor.**
22. Other – Citizens (likely from the encampments) were observed hitting golf balls into the property from the levee (see photo). **This is a major safety hazard to lessee's, visitors, staff, and wildlife. We recommend working with the LCWA's homeless contractor to resolve this issue.**

## Map

The photos of the issues and observations detailed above are labeled by number. The number on the map below indicates the location of these issues and observations.



# OTD Parcel



OTD Parcel leasee had their lock on daisy chain cut, and materials stolen



Trash bin/Trash observed during month of November, but was absent during November property patrol



# OTD Parcel



Trash all along roadside, along hilltop, and along outer edge of fencing



# OTD Parcel



Large Trash Pile Locations

# OTD Parcel



Fencing in need of upgrades, repairs, and vegetation clearance





# Zedler



Golf balls being hit onto property from  
levee encampment



Golf ball hit into rare plant restoration area

# Zedler



Truesdell Corporation materials staging area created on Bryant property next to Zedler Marsh entrance gate in November to work on 2<sup>nd</sup> Street bridge repairs



# State Land Parcel



Homeless materials still on site at front of platform



Homeless materials still on site by tree, trash bags with cans in them moved to open area and repeatedly replaced under tree cover



# State Lands Parcel



All overgrown vegetation along State Lands Parcel fence line cleared



# Hellman



Dry brush on property bordering neighborhood partially cleared, lock blocked remaining areas during first clearance bout, remaining dry brush clearance will take place in December in compliance with Orange Counties Fire Authority guidelines

# Hellman



Barbed wire absent/damage above back entrance gates

Signs of fence breach  
behind Surf Place  
house



# Hellman



Two fence lines segments bent and warped down giving easy access to property from Gum Grove Park, hay bales present during November patrol



# Hellman



Several points along Gum Grove Fence line are damaged/breached



# Bryant Lease West



Gates still open during November Patrol, with open access to property



Large section of fence broken



Fence line next to 2<sup>nd</sup> Street bridge breached



# Bryant Lease West

## Encampment #1



This encampment has been reported for over 17 months and not been remediated

# Bryant Lease West

## Encampment #2



Encampment #2 during  
September Patrol

Encampment#2 during October  
Patrol, material accumulation  
moving toward oil operations

Encampment #2 during November  
land tour, inhabitants present  
during tour and land patrol



# Bryant Lease West



Golf ball found during November land patrol

## Field Report Memorandum

**To:** Mark Stanley, LCWA

**From:** Marcelo Ceballos, Tidal Influence, LLC

**Cc:** Eric Zahn, Tidal Influence, Lenny Arkinstall, Salian Garcia

**Date:** January 4th, 2018

**Subject:** Land Management Field Report

Sites Inspected: Zedler Marsh, Bryant Lease West, Hellman/Gum Grove, State Lands Parcel, & OTD Parcel

Inspection Date: December 29<sup>th</sup>, 2017

*Note: The locations of critical observations and issues noted in this document are called out on the map on the final page. Photos of certain issues are attached at the end of the report.*

### OTD Parcel

---

1. Gates –

- a. The entrance gate needs barbed wire installed on it. A small gap between two posts needs to be closed. **We recommend hiring a fence contractor. Tidal Influence staff is coordinating with fence contractors to get estimates for this work.** (See photos)
- b. OTD Parcel was broken into earlier last month. A leasee lock was cut and the gate was breached. Supplies and materials were stolen from a container belonging to the leasee. **We recommend replacing this gate entrance and/or locking mechanism. Tidal Influence staff is coordinating with fence contractors to get estimates for this work.**

2. Trails –

- a. A rough path was created along the perimeter of the property to allow for patrols and ease of trash removal. The beginning of bird mating season will likely hinder further brush clearance.

3. Fences –

- a. Barbed wire needs to be replaced on the portion of the fence line that is nearest the entrance gate. **We recommend hiring a fence contractor. Tidal Influence staff is coordinating with fence contractors to get estimates for this work.** (See photos)

4. Homeless –

- a. **A new homeless encampment** was found during this month's patrol. Inhabitant has set up on South side of property hidden in trees/brush. **We recommend working with the LCWA's homeless contractor to remediate this encampment ASAP.** (See Photos)
- b. Tree branches were found uniformly cut and gathered on the South side of the property, likely from the new homeless inhabitant. This gathering of flammable materials could be hazardous to the site and leasee. **We recommend working with the LCWA's homeless contractor to remediate the encampment and stop the source of the firewood and clear/disperse the firewood to reduce any potential hazard to the site.** (See Photos)
- c. A substantial amount of trash exists on-site, with additional trash being added since last month's patrol. A rough path has been cleared to allow easier access for the removal of trash. Attached is a map with the large trash pile locations. **We recommend this trash be disposed of ASAP by the LCWA's homeless contractor on a regular basis.** (See photos)
- d. Leasee employees on site during the land patrol indicated that there were two homeless persons who regularly visited the perimeter of the site and would dump trash. **We recommend working with the LCWA's homeless contractor and LBPD to carry out patrols to keep the site more secure. Additionally Tidal Influence staff are coordinating with fence contractors to get estimates to repair and possibly upgrades sections of the current fenceline and gate entrance.**



## Zedler Marsh

---

5. Gates – OK
6. Trails – OK
7. Fences – OK
8. Homeless –
  - a. A small encampment was observed early in the morning on the levy outside of the bicycle entrance gate, but was cleared out by the afternoon.
9. Other – Note: We recommend updating the signage at the entrance gate to reduce the amount of unapproved visitors once the property has been acquired by the LCWA.

## State Lands Parcel

---

10. Gates – OK
11. Trails – OK
12. Fences – OK
13. Homeless –
  - a. The cache of homeless materials and trash hidden in the trees and along land tour routes were cleared by Tidal Influence staff.

## Hellman

---

14. Gates – OK
15. Trails –
  - a. Gopher holes coming from neighborhoods and Gum Grove Park have been observed on the property near fence lines and have moved further into the property. These have not made a major impact on native vegetation yet. **Tidal Influence Staff will continue to monitor and advise if action needs to be taken.** (See Photos)
16. Fences –
  - a. A number of the fence breaches have been discovered all along the Gum Grove fence line in addition to the fence segments that were monitored earlier in the year. **We recommend hiring a fence contractor. Tidal Influence staff is coordinating with fence contractors to get estimates for this work.** (See Photos)
  - b. Tidal Influence staff has cleared dry brush along the fence line neighboring houses. This clearance was in accordance with the Orange County Fire Authority guidelines. A second inspection by OCFA has occurred and the dry brush clearance has been approved as complete by the OCFA. (See Photos)
17. Homeless – OK

## Bryant Lease West

---

18. Gates – All the locks and chains for the gates along levee have been removed and all gates are open.  
**We recommend LCWA staff meeting with LA County to determine a new approach to securing this property. We recommend that lock boxes be installed on the gates. Another possibility is replacing the gates with a stronger material to prevent future breaches. Tidal Influence staff is also coordinating with fence contractors to get estimates for this work.** (See Photos)
19. Trails – OK
20. Fences –
  - a. Small breach on the West entrance gate has been patched by Tidal Influence Staff.
  - b. The fence next to the 2<sup>nd</sup> Street access gate has been breached, making this gate ineffective. **We recommend LCWA staff meeting with LA County to determine a new approach to securing this property.** (See Photos)
21. Homeless –
  - a. All encampments and debris along this portion of the levy were cleared on December 19<sup>th</sup>, 2017 lead by the LCWA's homeless contractor.
  - b. Encampment #1 appears to have returned and the inhabitant was observed in the encampment on December 22<sup>nd</sup> and December 29<sup>th</sup> during the patrol. **Tidal Influence Staff and the LCWA's Homeless contractor are working to post signage up in order to increase enforcement in this area.** (See Photos)
  - c. Encampment #2 appears to be cleared but a number of different people have been observed around the area and may be planning to set up a new encampment. **Tidal Influence Staff and the LCWA's Homeless contractor are working to post signage up in order to increase enforcement in this area.** (See Photos)



## Map

The photos of the issues and observations detailed above are labeled by number. The number on the map below indicates the location of these issues and observations.





# OTD Parcel



New Homeless Encampment found on perimeter of property, hidden by brush and larger vegetation



Cut up tree branches gathered together, likely used as firewood



# OTD Parcel



Trash all along roadside, along hilltop, and along outer edge of fencing



# OTD Parcel



Large Trash Pile Locations



# OTD Parcel



Fencing in need of upgrades, repairs, and vegetation clearance



# Hellman



All dry brush surrounding the property next to neighborhoods has been cleared.



# Hellman



Gopher holes found on Hellman Property

# Hellman



Barbed wire absent/damage above back entrance gates

Signs of fence breach  
behind Surf Place  
house



# Hellman



Two fence lines segments bent and warped down giving easy access to property from Gum Grove Park, hay bales present during patrol



# Hellman



Several points along Gum Grove Fence line are damaged/breached





# Bryant Lease West



Gates still open during November Patrol, with open access to property



Large section of fence broken



Fence line next to 2<sup>nd</sup> Street bridge breached

# Bryant Lease West

## Encampment #1



Encampment was cleared on December 19<sup>th</sup>, 2017, but inhabitant has returned and set up new encampment



# Bryant Lease West



New Clothing/Debris left on levy fence  
(after clean up effort)



Person riding bike along levy during  
patrol (after clean up effort)



People seen around encampment area  
(after clean up effort)

# LOS CERRITOS WETLANDS STEWARDSHIP PROGRAM SUMMARY REPORT OCTOBER 16TH, 2017 – JANUARY 22ND, 2018

---

## Los Cerritos Wetlands Authority

### Nature Walks

*Turtle Trek, Raptor Ramble, Heron Hike*

Los Cerritos Wetlands Land Trust supported nature walks continue to receive attention from neighboring communities and beyond with approximately 75 attendees between the months of November and January (Figure 1). The three tours within this time attracted both return guests as well as many more first-time visitors. The annual shifts in vegetation combined with the everyday diversity in animal activity make for these tours to be a truly unique experience every single time. Each walk begins at the north side of 1st Street and Pacific Coast Highway in Seal Beach at 8:00am every 1st Saturday of the month. Members of the public are welcome to join in on the 3 different tours around the wetlands. For more information about each tour, please contact [ejlambe@verizon.net](mailto:ejlambe@verizon.net).

### Habitat Restoration Events

Volunteer restoration events in Los Cerritos Wetlands continued to draw substantial numbers between the months of November and January with events averaging 36 participants. Such turnouts allowed the Stewardship Program to successfully install 428 native plants surrounding Zedler Marsh while also removing 100 lbs. of nonnative vegetation (Figure 2). The Stewardship Program's college intern-supported Crew Days resulted in the removal of 1140 lbs. of threatening nonnative vegetation and these newly cleared areas can now be utilized by native flora like the special status species, southern tarplant. College interns further supported Between Crew Days and two trash cleanup events in the months of November and December, 153 lbs. of trash were removed from Los Cerritos Wetlands with the most commonly removed objects being plastic straws weighing less than half of a gram each (Figure 3). **Restoration events, Crew Days and trash cleanups between mid-October and late January produced 528 volunteer hours, contributing \$12945.52 in in-kind services.** To request a restoration or education event for your group or organization, please contact [iwanttohelp@tidalinfluence.com](mailto:iwanttohelp@tidalinfluence.com).

### Special Events

The Stewardship Program hosted one service-learning field trip at the end of the 2017 school year (Figure 4). **This single special event was still able to successfully propagate 448 native plants and product \$1303.56 in in-kind services.** Future service-learning field trips for the upcoming 2018 semesters are already being scheduled. Private land tours through various locations within Los Cerritos Wetlands were provided for Long Beach City staff members as well as students from Cal Poly Pomona University. Private land tours allow the Stewardship Program to reach even further in its goal to foster the valuation and sense of responsibility for the increasingly few and far between places like Los Cerritos Wetlands.





FIGURE 1. HERON HIKE (TOP), TURTLE TREK (MIDDLE), RAPTOR RAMBLE (BOTTOM)





FIGURE 2. RESTORATION EVENTS BETWEEN NOVEMBER AND JANUARY





FIGURE 3. DECEMBER TRASH CLEANUP



FIGURE 4. LBCC SERVICE-LEARNING FIELD TRIP

# El Dorado Audubon Society

## Los Cerritos Wetlands Authority Nature/Bird Walks

Report for February 1, 2018

El Dorado Audubon has been leading nature/bird walks for the Los Cerritos Wetlands Authority since 2009. As a local chapter of the National Audubon Society, El Dorado Audubon's mission is conservation of native birds and their habitats and education of members and the community. Los Cerritos Wetlands is an Audubon Important Bird Area. Our walks encompass the importance of wetlands and Los Cerritos in particular. We recognize the connectivity of the wetlands with the San Gabriel River, Seal Beach National Wildlife Refuge, El Dorado Nature Center and other Orange Coast Wetlands. We continue to draw community members from throughout Southern California and visitors from Minnesota, Nevada, Texas, and Wisconsin.

Guest speakers on our walks covered a variety of topics: Bays and Estuaries of Southern California, Birds of the Pacific Flyway, sea turtles, butterflies, native and non-native wildflowers.

Los Cerritos Wetlands Hellman property, Orange, California, US

Jan 13, 2018

Clear, 68 to 70 degrees

27 species (+5 other taxa)

Canada Goose 400

Northern Shoveler 2

American Wigeon 41

Mallard 4

duck sp. 25

Double-crested Cormorant 2

Great Blue Heron 1

Great Egret 2

Snowy Egret 14

White-faced Ibis 4

Northern Harrier 1

American Coot 2

Killdeer 11

Least Sandpiper 4

Greater Yellowlegs 2

shorebird sp. 6

gull sp. 15



tern sp. 2  
Mourning Dove 2  
Allen's Hummingbird 2  
hummingbird sp. 3  
Belted Kingfisher 1  
American Kestrel 2  
Black Phoebe 2  
Say's Phoebe 3  
Cassin's Kingbird 3  
American Crow 1  
Northern Mockingbird 2  
Common Yellowthroat 3  
Yellow-rumped Warbler (Audubon's) 2  
White-crowned Sparrow 1  
House Finch 7

Los Cerritos Wetlands Zedler Marsh  
Dec 16, 2017  
17 species (+2 other taxa)

American Wigeon 2  
Mallard 5  
Bufflehead 2  
Double-crested Cormorant 8  
Osprey 1  
Black-bellied Plover 1  
Long-billed Dowitcher 5  
gull sp. 40  
Rock Pigeon (Feral Pigeon) 25  
Allen's Hummingbird 1  
Black Phoebe 1  
Blue-gray Gnatcatcher 1  
Northern Mockingbird 3  
White-crowned Sparrow 125  
California Towhee 1  
Western Meadowlark 1  
House Finch 5  
American Goldfinch 1  
Spinus sp. (goldfinch sp.) 8

Los Cerritos Wetlands Hellman property

Dec 16, 2017

15 species

Canada Goose 700

Mallard 5

Great Blue Heron 8

Great Egret 7

Snowy Egret 11

Northern Harrier 1

Red-tailed Hawk 2

Semipalmated Plover 8

Killdeer 25

Belted Kingfisher 2

American Kestrel 2

Cassin's Kingbird 3

Northern Mockingbird 3

White-crowned Sparrow 35

Lincoln's Sparrow 2

Los Cerritos Wetlands Zedler Marsh, Los Angeles, California, US

Nov 26, 2017 3:00 PM - 5:00 PM

10 species (+1 other taxa)

Canada Goose 15

Double-crested Cormorant 21

Great Blue Heron 3

Snowy Egret 2

California Gull 7

gull sp. 27

Belted Kingfisher 1

Say's Phoebe 1

Northern Mockingbird 1

White-crowned Sparrow 28

Lesser Goldfinch 1

Los Cerritos Wetlands Hellman property, Orange, California, US

Oct 14, 2017

Comments: Clear, temperature 70 to 75 degrees, wind 3 mph

First time to see a Red-shouldered Hawk in 2017, Canada Goose in groups of 15 to 25 from



direction of SBNWR and landing in the OC Retention Basin  
23 species (+3 other taxa)

Canada Goose 65  
Double-crested Cormorant 2  
Brown Pelican 1  
Great Blue Heron 1  
Great Egret 2  
Snowy Egret 1  
Turkey Vulture 1  
Northern Harrier 1  
Red-shouldered Hawk 1  
Killdeer 2  
Greater Yellowlegs 1  
Willet 1  
hummingbird sp. 4  
Belted Kingfisher 1  
American Kestrel 1  
Black Phoebe 2  
Say's Phoebe 1  
American Crow 2  
House Wren 4  
Northern Mockingbird 1  
European Starling 3  
White-crowned Sparrow 3  
Song Sparrow 1  
sparrow sp. 17  
House Finch 75  
Acanthis/Spinus sp. 1