

Field Report Memorandum

To: Sally Gee, LCWA

From: Marcelo Ceballos, Tidal Influence, LLC

Cc: Eric Zahn, Tidal Influence, Lenny Arkinstall, Salian Garcia, Mark Stanley

Date: October 6th, 2020

Subject: Land Management Field Report

Sites Inspected: Zedler Marsh, Bryant Lease West, Hellman/Gum Grove, State Lands Parcel, & OTD Parcel

Inspection Date: September 22nd, 2020

Note: The locations of critical observations and issues noted in this document are called out on the map on the final page. Photos of certain issues/observations are attached at the end of the report.

OTD Parcel

1. Gates –
 - a. Entrance gate damaged by a vehicle on September 21st. (See Photos)
Leasee staff have taken responsibility for and are coordinating replacement of the gate. Tidal Influence staff will coordinate with the leasee and verify replacement.
2. Trails – OK
3. Fences – OK
4. Homeless –
 - a. Encampment observed along the southern fence line of property off of 2nd Street. Two inhabitants were observed during the walkthrough along with shopping carts full of materials. (See Photos)
We recommend the LCWA's Homeless contractor work to outreach to and remediate this encampment as soon as possible.

Zedler Marsh

5. Gates – OK
6. Trails –
 - a. Two trash clean up events were conducted on September 15th and 18th in coordination with a super volunteer following COVID protocols. This event acted as a trial event for establishing the return of public programs. (See Photos)
Tidal Influence will continue to monitor the presence of trash throughout the site and remove as necessary.
7. Fences – OK
8. Homeless – OK

State Lands Parcel

9. Gates –
 - a. The eastern gate was left unsecured. The chain and lock were left intact.
Tidal Influence staff have resecured the site by changing the lock combination. They will continue to closely monitor this for possible unapproved entry onto site.
10. Trails – OK
11. Fences – OK
12. Homeless – OK

Hellman

13. Gates – OK

14. Trails –

- a. Minor erosion has occurred to the path leading to the access gate adjacent to Gum Grove Park. (See Photos)
Tidal Influence staff will monitor this erosion. An assessment and repairs will be scheduled once stewardship programs resume to ensure visitor safety.
- b. The underbrush of a non-native pepper tree along the stewardship trail is growing back. This pepper tree will require maintenance to ensure line of site visibility for visitor and staff safety. (See Photos)
Tidal influence staff will work to conduct maintenance in the coming months. A staff biologist will check for any nesting bird activity before this maintenance is conducted to ensure no biological impacts are made.
- c. Vegetation has begun to encroach along the stewardship trail system. (See Photos)
Tidal Influence staff will monitor growth and trail maintenance will be scheduled once stewardship programs resume to ensure visitor safety.

15. Fences –

- a. Vegetation growing along a portion of the fence line of stewardship program parking area.
Tidal Influence staff will monitor and schedule fence line maintenance once stewardship programs resume.

16. Homeless – OK

Bryant Lease West

17. Gates –

- a. According to LCWA homeless report all levee gates were locked subsequent to encampment cleanups however the locks and chains for the gates along the levee have been removed and all gates are open. (See Photos)
We recommend LCWA staff meet with LA County to determine a new approach to secure this property. We recommend adjusting the fence line location to provide a thoroughfare along the levy path.

18. Trails –

- a. A large rubble pile consisting of asphalt, concrete, and metal have been dumped near the entrance gate to the LCWA's Bryant West Property. This pile is currently located on property currently owned by the Bryant's. At the time of observations tire tracks were observed leading up to the rubble pile but no other indications of the responsible party were found. Clean up of this rubble was started on July 23rd, 2019 by the LCWA's Homeless contractor and the City of Long Beach's Clean team, with an additional cleanup effort needed to finish removing the remaining material.
Tidal Influence staff will track the progress of the clean up effort and assess the site for impacts once the clean ups are complete.
- b. A small fire occurred on the northwest portion of the property approximately 250 feet from eastern fence line on Wednesday September 23rd, 2020. The local fire department quickly extinguished the fire with 0.35 acres of vegetation being affected. During the night of September 23rd an attempt to start a second fire on the property was reported by the local fire department. (See Photos)
Tidal Influence staff have conducted a site walkthrough identifying potential fire risks. Staff will work with the oil operators and LCWS to reduce fire loads in the areas.

19. Fences –

- a. A previously patched fence line approximately 200 meters south of the main encampment has been breached and requires repairs.
Tidal Influence staff will work to repair the breached portion of fence line in the coming months.
- b. Graffiti was observed on the river side of the concrete base of San Gabriel River trail fencing below the cattle grates. (See Photos)
Tidal Influence staff will work with the LCWA's contractor to contact LA County staff to resolve this item.

20. Homeless –

- a. As of September 22nd, the encampment area remains vacant. (See Photos)
Tidal Influence will patch fence lines and repost no trespassing signs in this area. Tidal Influence will coordinate with the LCWA's homeless contractor for the maintenance of the non-native shrubs growing along the fence line to deter future encampments from establishing in this area.

Map

The photos of the issues and observations detailed above are labeled by number. The number on the map below indicates the location of these issues and observations.



OTD



Entrance gate damaged by vehicle



Encampment on southern property border

Zedler Marsh



Trash collected in and around Zedler Marsh

State Lands



Western property gate resecured

Hellman



Non-native pepper tree growing onto trail



Vegetation growing along stewardship trail system



Erosion along back trail

Bryant Lease West



Main encampment clear of materials and vacated



Levee gates left open



Small fire in north western section of property



Graffiti on levee bank



Field Report Memorandum

To: Sally Gee, LCWA

From: Marcelo Ceballos, Tidal Influence, LLC

Cc: Eric Zahn, Tidal Influence, Lenny Arkinstall, Salian Garcia, Mark Stanley

Date: November 10th, 2020

Subject: Land Management Field Report

Sites Inspected: Zedler Marsh, Bryant Lease West, Hellman/Gum Grove, State Lands Parcel, & OTD Parcel

Inspection Date: October 22nd, 2020

Note: The locations of critical observations and issues noted in this document are called out on the map on the final page. Photos of certain issues/observations are attached at the end of the report.

OTD Parcel

1. Gates –
 - a. Entrance gate damaged by a vehicle on September 21st, 2020. Leasee has taken responsibility for and has coordinated replacement of the gate. (See Photos)
2. Trails – OK
3. Fences – OK
4. Homeless –
 - a. Encampment was observed along the southern fence line of property near 2nd Street during walkthrough. Two inhabitants were observed during the previous walkthrough along with shopping carts full of materials. The encampment has been remediated with no sign of inhabitants or no materials left behind. (See Photos)

Zedler Marsh

5. Gates – OK
6. Trails – OK
7. Fences – OK
8. Homeless – OK

State Lands Parcel

9. Gates – OK
10. Trails – OK
11. Fences – OK
12. Homeless – OK

Hellman

13. Gates –
 - a. The electronic entrance gate near 1st St. and PCH was damaged by a vehicle. The damaged gate was removed and a temporary fence was put in place to secure the property while a replacement is fabricated. (See Photos)
Tidal Influence staff have increased security measures to the facilities and will be performing weekly site walkthroughs of the property.

14. Trails –

- a. Minor erosion has occurred to the path leading to the access gate adjacent to Gum Grove Park. (See Photos)
Tidal Influence staff will monitor this erosion. An assessment and repairs will be scheduled once stewardship programs resume to ensure visitor safety.
- b. The underbrush of a non-native pepper tree along the stewardship trail is growing back. This pepper tree will require maintenance to ensure line of site visibility for visitor and staff safety. (See Photos)
Tidal influence staff will work to conduct maintenance in the coming months. A staff biologist will check for any nesting bird activity before this maintenance is conducted to ensure no biological impacts are made.
- c. Vegetation has started to encroach along the stewardship trail system. (See Photos)
Tidal Influence staff will monitor growth and trail maintenance will be scheduled once stewardship programs resume to ensure visitor safety.

15. Fences –

- a. Vegetation growing along a portion of the fence line of the stewardship program parking area.
Tidal Influence staff will monitor and schedule fence line maintenance once stewardship programs resume.

16. Homeless – OK

Bryant Lease West

17. Gates –

- a. All levee gates were locked following outreach and clean up efforts by the LCWA's homeless relocation contractor. However, the locks and chains for the gates along the levee have been removed and all gates were open during the walkthrough. (See Photos)
We recommend LCWA staff meet with LA County to determine a new approach to secure this property. We recommend adjusting the fence line location to provide a thoroughfare along the levy path.

18. Trails –

- a. A large rubble pile consisting of asphalt, concrete, and metal have been dumped near the entrance gate to the LCWA's Bryant West Property. This pile is currently located on property currently owned by the Bryant's. At the time of observations tire tracks were observed leading up to the rubble pile but no other indications of the responsible party were found. Clean up of this rubble was started on July 23rd, 2019 by the LCWA's Homeless contractor and the City of Long Beach's Clean team, with an additional cleanup effort needed to finish removing the remaining material.
Tidal Influence staff will track the progress of the clean up effort and assess the site for impacts once the clean ups are complete.
- b. A small fire occurred on the northwest portion of the property approximately 250 feet from eastern fence line on Wednesday September 23rd, 2020. The local fire department quickly extinguished the fire with 0.35 acres of vegetation being affected. During the night of September 23rd an attempt to start a second fire on the property was reported by the local fire department.
Tidal Influence staff have conducted a site walkthrough identifying potential fire risks. Staff will work with the oil operators and LCWS to reduce fire loads in the areas.

19. Fences –

- a. A previously patched fence line approximately 200 meters south of the main encampment has been breached and requires repairs. (See Photos)
Tidal Influence staff will work to repair the breached portions of fence line in the coming months.
- b. Graffiti was observed on the river side of the concrete base of San Gabriel River trail fencing below the cattle gates.
Tidal Influence staff will notify LA County staff of the issue to address.
- c. Portion of fence in between levee gates has been breached. (See Photos)
Tidal Influence staff will work to repair the breached portion of fence line in the coming months.
- d. Eastern fence line near southern border fence has been breach. (See Photos)
Tidal Influence staff will work to repair the breached portion of fence line in the coming months

20. Homeless –

- a. As of September 22nd, all encampments have remained clear.
Tidal Influence will patch fence lines and repost no trespassing signs in this area. Tidal Influence will coordinate with the LCWA's homeless contractor for the maintenance of the non-native shrubs growing along the fence line to deter future encampments from establishing in this area.

Map

The photos of the issues and observations detailed above are labeled by number. The number on the map below indicates the location of these issues and observations.



OTD



Entrance gate replaced



Encampment on southern property border remediated

Hellman



1st and PCH entrance gate damaged by vehicle



Erosion along back trail



Non-native pepper tree growing onto trail



Vegetation growing along stewardship trail system

Bryant Lease West



Levee bank fence breach



Levee gates left open



Southern border fence line breach



Eastern fence line breach near old encampment



Field Report Memorandum

To: Sally Gee, LCWA

From: Marcelo Ceballos, Tidal Influence, LLC

Cc: Eric Zahn, Tidal Influence, Lenny Arkinstall, Salian Garcia, Mark Stanley

Date: December 22nd, 2020

Subject: Land Management Field Report

Sites Inspected: Zedler Marsh, Bryant Lease West, Hellman/Gum Grove, State Lands Parcel, & OTD Parcel

Inspection Date: December 2nd, 2020

Note: The locations of critical observations and issues noted in this document are called out on the map on the final page. Photos of certain issues/observations are attached at the end of the report.

OTD Parcel

1. Gates –
 - a. Entrance gate signage found with water damage and fading text.
Tidal Influence staff will secure and post replacement signage.
2. Trails –
 - a. Tidal Influence conducted vegetative maintenance along 2nd Street to remove obstructions within 5 feet of the roadside. A staff biologist was on site during maintenance. No impact to biological resources was observed. (See Photos)
3. Fences – OK
4. Homeless – OK

Zedler Marsh

5. Gates – OK
6. Trails – OK
7. Fences – OK
8. Homeless – OK

State Lands Parcel

9. Gates – OK
10. Trails – OK
11. Fences – OK
12. Homeless
 - a. Homeless encampment observed area west of the State Lands property along the Pacific Coast Highway.
Tidal Influence staff will notify DWP of the encampment.

Hellman

13. Gates –

- a. The electronic entrance gate near 1st St. and PCH was damaged by a vehicle. The damaged gate was removed and a temporary fence was put in its place to secure the property while a replacement is fabricated. A replacement fence has been installed and is functioning properly. Increased security measures will remain in place. (See Photos)

14. Trails –

- a. Minor erosion has occurred to the path leading to the access gate adjacent to Gum Grove Park. (See Photos)
Tidal Influence staff will monitor this erosion. An assessment and repairs will be scheduled once stewardship programs resume to ensure visitor safety.
- b. Tidal Influence staff performed vegetation maintenance of a non-native pepper tree growing along the stewardship trail to ensure line of site visibility. No biological impacts were made during this maintenance activity. (See Photos)
- c. Vegetation has started to encroach along the stewardship trail system. (See Photos)
Tidal Influence staff will monitor growth and trail maintenance will be scheduled once stewardship programs resume to ensure visitor safety.
- d. Vegetation maintenance was conducted along the coastal sage scrub trail near the Heron Point/Gum Grove junction. No impacts to biological resources were made during this maintenance activity.

15. Fences –

- a. Vegetation growing along a portion of the fence line of the stewardship program parking area.
Tidal Influence staff will monitor and schedule fence line maintenance once stewardship programs resume.
- b. Tidal Influence staff have repaired a previously repaired section of fence line bordering Surf Place homes after obvious tampering was observed. (See Photos)
- c. Tidal Influence staff have repaired a breach along the fence line bordering Gum Grove Park approximately 400 ft from Heron Point entrance (See Photos)

16. Homeless – OK

Bryant Lease West

17. Gates –

- a. All levee gates were locked following outreach and clean up efforts by the LCWA's homeless relocation contractor. The locks and chains for the gates were found untampered with during this walkthrough. (See Photos)
We recommend LCWA staff meet with LA County to determine a new approach to secure this property. We recommend adjusting the fence line location to provide a thoroughfare along the levy path, due to the frequency that locks are cut and new encampments starting to form along the levy.

18. Trails –

- a. A large rubble pile consisting of asphalt, concrete, and metal have been dumped near the entrance gate to the LCWA's Bryant West Property. This pile is currently located on property currently owned by the Bryant's. Clean up of this rubble was started on July 23rd, 2019 by the LCWA's Homeless contractor and the City of Long Beach's Clean team, with an additional cleanup effort needed to finish removing the remaining material.
Tidal Influence staff will track the progress of the clean up effort and assess the site for impacts once the clean ups are complete.
- b. Native vegetation has started to recover in areas affected by fires. Tidal Influence has identified potential fire risks and will implement actions to reduce fire loads. (See Photos)
- c. Graffiti spotted on concrete structure next to northern most oil well on east side of property.
Tidal Influence staff will work to remediate this graffiti in the coming months.

19. Fences –

- a. A previously patched fence line approximately 200 meters south of the main encampment has been breached and requires repairs. (See Photos)
Tidal Influence staff will work to repair the breached portions of fence line in the coming months.
- b. Graffiti was observed on the river side of the concrete base of San Gabriel River trail fencing below the cattle grates.
Tidal Influence staff will notify LA County staff of the issue to address if possible.
- c. Portion of fence in between levee gates has been breached. (See Photos)
Tidal Influence staff will work to repair the breached portion of fence line in the coming months.
- d. Eastern fence line near southern border fence has been breached. (See Photos)
Tidal Influence staff will work to repair the breached portion of fence line in the coming months

20. Homeless –

- a. A new encampment was observed on the river trail outside the property near fence breach caused by old encampment inhabitant. (See Photos)

We recommend the LCWA's homeless contractor work to remediate this encampment in the coming months to discourage additional campsites from establishing. Tidal Influence staff will repair fence line and post no trespassing signs in the coming months.

- b. Some trash and bedding found underneath cattle grate indicating possible use as shelter.

We recommend the LCWA's homeless contractor work to remediate this encampment in the coming months to discourage additional use as shelter.

Map

The photos of the issues and observations detailed above are labeled by number. The number on the map below indicates the location of these issues and observations.

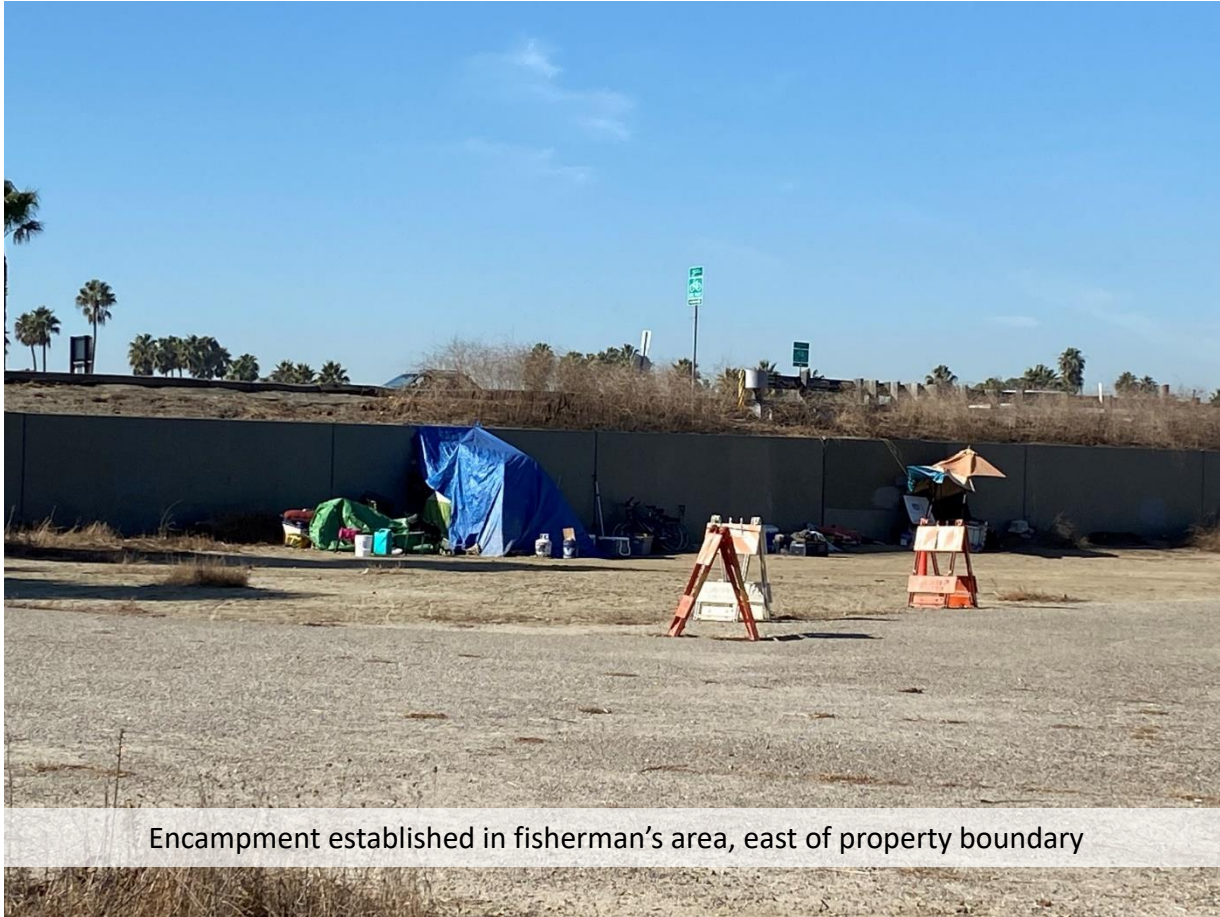


OTD



Vegetation trimmed 5 feet from roadway

State Lands



Hellman



1st and PCH entrance gate has been replaced



Erosion along back trail



Non-native tree trimmed to allow line of sight visibility

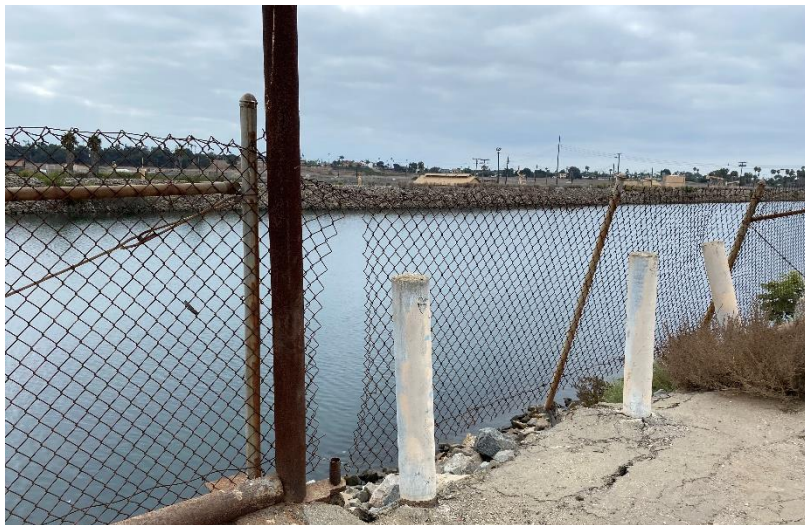


Vegetation growing along trail system

Hellman



Bryant Lease West



Levee bank fence breach



Levee gates remain locked



Southern border fence line breach



Eastern fence line breach near old encampment

Bryant West Lease



Bedding found underneath cattle grates



Graffiti on concrete structure



Belongings found hidden under tree



Encampment observed along river trail

Bryant West Lease



Native vegetation recovering from fire damage