

Southern Los Cerritos Wetlands Restoration Project

Public Access Questionnaire

Public Meeting #1

December 7, 2021



Los Cerritos Wetlands Authority

1. What open space areas in the Alamitos Bay and/or Seal Beach areas do you most frequent (choose up to 3)?
 - a. Los Cerritos Wetlands
 - b. Colorado Lagoon
 - c. Marine Stadium
 - d. Jack Dunster Marine Reserve
 - e. Beaches
 - f. Gum Grove Park
 - g. Heron Pointe Cultural Trail
 - h. San Gabriel River bike trail
 - i. Other

2. How frequently do you recreate in the open spaces of the Alamitos Bay and/or Seal Beach areas?
 - a. 0-5 times per year
 - b. 6-10 times per year
 - c. Once a month
 - d. Several times a month

3. When you are enjoying the open space areas in the Alamitos Bay and/or Seal Beach areas, what are your top three favorite activities (choose 3).
 - a. Bird watching
 - b. Walking/hiking
 - c. Dog walking
 - d. Bicycling
 - e. Photography/art
 - f. Meditation
 - g. Cultural ceremonies
 - h. Prayer
 - i. Reading
 - j. Swimming
 - k. Running
 - l. Yoga
 - m. Sports (like a pick-up game or similar)
 - n. Clean-ups/restoration events
 - o. Other



4. Have you participated in an organized clean-up or habitat restoration event in the Los Cerritos Wetlands within the last 5 years?
 - a. Yes
 - b. No
5. Did you attend (either in person or virtually) any of the public meetings and/or public workshops the LCWA hosted about the Los Cerritos Wetlands Restoration Plan and Program EIR?
 - a. Yes
 - b. No
6. Have you visited Gum Grove Park in Seal Beach within the last 5 years?
 - a. Yes, but I only visit infrequently.
 - b. Yes, I visit all the time.
 - c. I have visited Gum Grove Park, but not within the last 5 years.
 - d. I have never been to Gum Grove Park.
7. Have you travelled along the San Gabriel River Bike Trail within the last 5 years?
 - a. Yes, but I only use the bike trail infrequently.
 - b. Yes, I travel along the bike trail all the time.
 - c. I have travelled along the bike trail, but not within the last 5 years.
 - d. I have never traveled along the bike trail.
8. The Southern LCW Restoration Project is located in Seal Beach east of the San Gabriel River, off First Street and Pacific Coast Highway. If you decide to visit the future restoration area, on average, how far will you be travelling to the site?
 - a. 0 to 2 miles
 - b. 2 to 4 miles
 - c. 4 to 6 miles
 - d. 6 miles or more
9. How do you plan on traveling to the site when the restoration project is complete? (choose up to 2)
 - a. Walking
 - b. Biking
 - c. Driving
 - d. Bussing



10. Identify any amenities you want to see at the Southern LCW Restoration Project site (choose all that apply).

- a. Public restrooms
- b. Public parking
- c. Bicycle parking
- d. Bird blinds / wildlife viewing platforms
- e. Interpretive signage
- f. Exercise equipment
- g. Visitor/Interpretive center
- h. Fishing area
- i. Picnic area
- j. Vista overlooks
- k. Exclusive Tribal access areas
- l. Exclusive research access areas
- m. Public Trails
- n. Amphitheater / gathering areas
- o. Benches & Trashcans
- p. Playground equipment
- q. List others _____

11. Identify the amenities you do not want to see offered at the Southern LCW Project site (choose all that apply).

- a. Public restrooms
- b. Public parking
- c. Bicycle parking
- d. Bird blinds / wildlife viewing platforms
- e. Interpretive signage
- f. Exercise equipment
- g. Visitor/Interpretive center
- h. Fishing area
- i. Picnic area
- j. Vista overlooks
- k. Exclusive Tribal access areas
- l. Exclusive research access areas
- m. Public Trails
- n. Amphitheater / gathering areas
- o. Benches & Trashcans
- p. Playground equipment
- q. List others _____



12. Identify the top 3 amenities you want to see offered at the Southern Los Cerritos Wetlands area (choose 3).

- a. Public restrooms
- b. Public parking
- c. Bicycle parking
- d. Bird blinds / wildlife viewing platforms
- e. Interpretive signage
- f. Exercise equipment
- g. Visitor/Interpretive center
- h. Fishing area
- i. Picnic area
- j. Vista overlooks
- k. Exclusive Tribal access areas
- l. Exclusive research access areas
- m. Public trails
- n. Amphitheater / gathering areas
- o. Benches & Trashcans
- p. Playground equipment
- q. List others _____

13. Which of the options below best represent your feelings about incorporating trails in the future restoration site? (choose one)

- a. I love trails, the more the better!
- b. Trails are fine, but only if they are along the peripheries and sensitively sited.
- c. Absolutely not, there should be no trails.
- d. I do not have a strong opinion.

14. Identify your top two concerns regarding the possibility of increasing public access to the Southern LCW Restoration Project site? (choose 2)

- a. Too many people would visit
- b. Personal safety
- c. Increased homeless encampments
- d. Impacts to sensitive wildlife and plant habitat from people, dogs, etc.
- e. Not enough parking
- f. Increase in noise
- g. I have no concerns
- h. List others _____



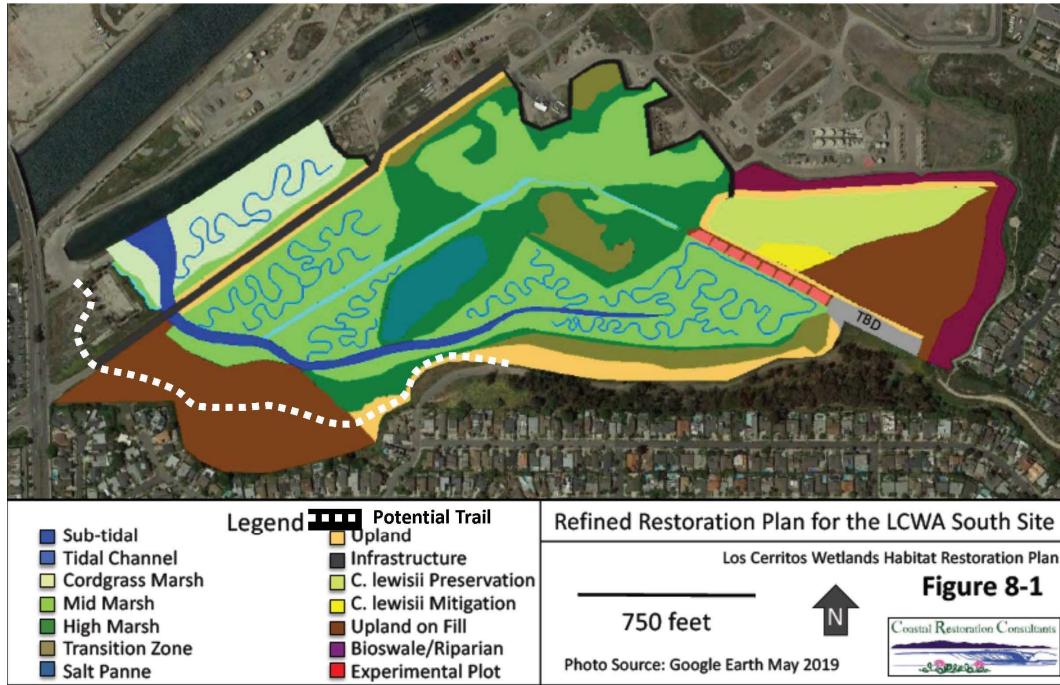
15. Could you see yourself utilizing a public trail connecting Gum Grove Park and the San Gabriel River Bike Path if one were implemented?
- I would use this, and I am supportive of this design feature.
 - I would not use this, but I like the idea.
 - I would not use this, and I am not supportive of this design feature.
 - I do not have a strong opinion.
16. What is your preferred trail surface?
- Decomposed granite
 - Asphalt
 - Gravel
 - Dirt
 - Mulch
 - List others _____
17. How important is it to you that the trail system incorporate signage?
- Signage is not very important to me.
 - Signage should be only located at the trailhead, and not throughout the trail system.
 - Signage should be thoughtfully located throughout the trail system.
 - I'm not sure.
18. Do you think there should be a docent (professional guide) monitoring the trail system?
- Yes, at all times.
 - Only as needed.
 - No, I don't really want to have a docent on the trails
 - I'm not sure.

On the next page are 4 images showing varying levels of public access, please identify your preference:

Alternative 1: Connector Trail Alternative
Alternative 2: Loop Trail Alternative
Alternative 3: Multi-Loop Trail Alternative
Alternative 4: No Trail Alternative

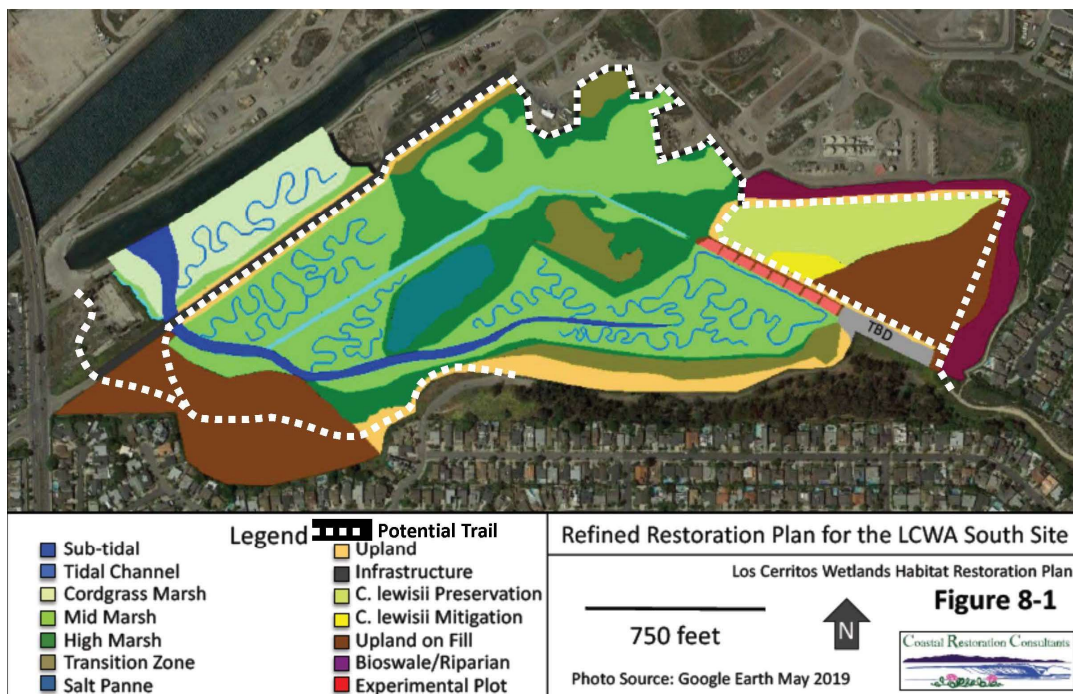
1. Connector Trail Alternative

This is the “connector trail alternative” that would only include a trail that connects Gum Grove Park’s trails to the San Gabriel River Bike Trail



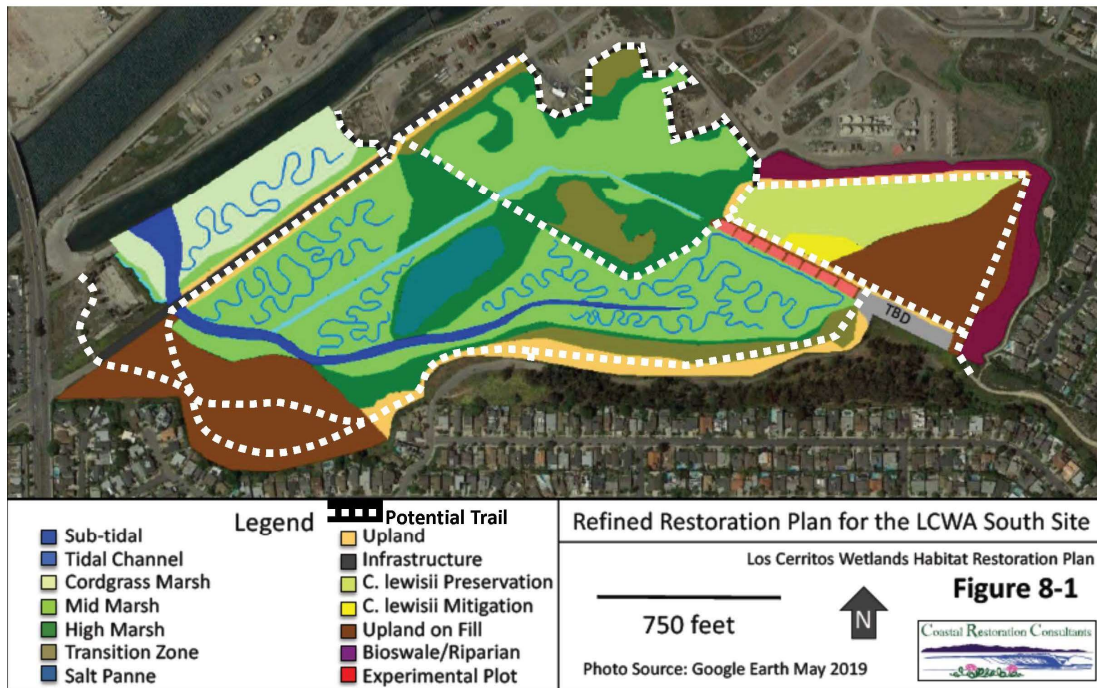
2. Loop Trail Alternative

This is the “loop trail alternative” that would connect Gum Grove Park’s trails to the San Gabriel River Bike Trail and includes a loop trail that circulates around the periphery of the project area



3. Multi Loop Trail Alternative

This is the “multi-loop trail alternative” that would connect Gum Grove Park’s trails to the San Gabriel River Bike Trail and includes several trail loops that provide access to most of the project area using boardwalks to traverse through tidal habitat areas



4. No Trail Alternative

This is the “no trail alternative” that would not have any publicly accessible trails

