

## Field Report Memorandum

**To:** Chad Oberly, LCWA

**From:** Trenton McColl, Tidal Influence

**Cc:** Eric Zahn, Tidal Influence, Mark Stanley, LCWA, Salian Garcia, LCWA

**Date:** September 30<sup>th</sup>, 2024

**Subject:** Land Management Field Report

Sites Inspected: Hellman/Gum Grove, State Lands Parcel, Zedler Marsh, Bryant Lease West, and Steamshovel Slough  
Inspection Date: August 27<sup>th</sup>, 2024

Note: The locations of critical observations and issues noted in this document are called out on the map on the final page. Photos of certain issues/observations are attached at the end of the report.

### Hellman

---

1. Gates – OK
2. Trails – OK
3. Fences –
  - a. Multiple fence posts had been damaged along the south fence line, adjacent to Gum Grove property. (See Photos)
    - i. **Tidal Influence staff will contact fencing contractors to get quotes for the repair work. If feasible, a contractor will coordinate with LCWA to repair the fence line within the upcoming months to ensure site security.**
  - b. The barbed wire along the west fence line was repaired by Tidal Influence staff. (See Photos)
4. Homeless – OK

### State Lands Parcel

---

5. Gates –
  - a. Gate hinges are loose on north fence, making the gate difficult to fully open. (See Photos)
    - i. **Tidal Influence staff will continue to make repairs to the fence in the upcoming months to ensure access.**
6. Trails – OK
7. Fences – OK
8. Homeless – OK

### Zedler Marsh

---

9. Gates –
  - a. The pedestrian gate from the bike path was broken, with the hinge and latches detached from the fence. (See Photos)
    - i. **Tidal Influence staff made temporary repairs and will contact gate repair contractors for quotes. Contractors will coordinate with LCWA to repair the gate to ensure site security.**
10. Trails –
  - a. Trespassing was documented by trail cameras on Signal Hill Petroleum property. (See Photos)

- i. **Tidal Influence staff will continue to monitor the area for non-beneficial use. Further security measures are being practiced by the Tidal Influence and Signal Hill Petroleum staff.**

11. Fences –

- a. The ‘Calloway Marsh’ area near the southern end of the property continues to be affected by off-road bike riding. 4 dirt ramps were constructed within wetland vegetation and removed on August 30<sup>th</sup>, 2024. Large holes were left adjacent to the ramps. An undetonated illegal firework was found within the off-road biking area and safely removed. 2 dirt ramps were constructed within the following week and removed on September 6<sup>th</sup>, 2024. Trails have been cut through areas of wetland vegetation. (See Photos)
  - i. **Tidal Influence staff will remove any ramps created within the week to prevent off-road biking. Staff will coordinate with CCLB and contractors to secure the property for intended parties and continue to monitor the area for non-beneficial use. Tidal Influence staff contacted LADWP Security to report off-road biking on August 26<sup>th</sup>, 2024, near the Hanes Cooling Channel. LADWP Security will be contacted anytime off-road biking is witnessed while staff is present.**

12. Homeless – OK

## Bryant Lease West

---

13. Gates –

- a. The county locked the levee gates along the river path, and the gates were found open again the next week. (See Photos)
  - i. **LCWA staff met with LA County to determine a course of action to secure the property. The county will continue to lock and repair the gates to secure property access for intended parties.**
- b. The northwest entrance gate was found damaged, making the gate difficult to close. (See Photos)
  - i. **We recommend repairing or replacing the gate to secure property access for intended parties.**
- c. The city lock was removed again from the river path’s south entrance gate. (See Photos)
  - i. **Tidal Influence will continue to coordinate with the city to replace the city lock, and secure property access for the intended parties.**

14. Trails –

- a. Trail cameras captured multiple occasions where members of the public were walking and biking on private property. They likely had entered through holes in the fence and the levee gates. (See Photos)
  - i. **Tidal Influence staff has requested Signal Hill Petroleum and law enforcement make regular patrols to discourage this behavior. Staff will continue to monitor for non-beneficial use and contact law enforcement if off-road biking is witnessed while staff is present.**
- b. Off-road bikes were seen on private property by Tidal Influence staff on July 29<sup>th</sup>, 2024 and August 5<sup>th</sup>, 2024. Each time, when directed to leave the property by staff, bikers reacted with contempt. Bikes were jumping on ramps created on the east side of property, near oil operations and county river path. Tidal Influence staff removed the ramps to inhibit off-road biking. (See Photos)
  - i. **Tidal Influence staff has requested Signal Hill Petroleum and law enforcement make regular patrols to discourage this behavior. Staff will continue to monitor for non-beneficial use and contact law enforcement if off-road biking is witnessed while staff is present.**

15. Fence –

- a. 4 breaches were found along the east fence line, exposing the parcel to the bike path. (See Photos)
  - i. **Tidal Influence staff will not make additional repairs until the issue with the levee gates is resolved.**

16. Homeless – OK

## Steamshovel Slough

---

17. Gates – OK

18. Trails –

- a. Filled trash bags were found again along the north side of the property. (See Photos)
  - i. **Trash bags will be removed from the property the individuals who filled them.**

19. Fences – OK

20. Homeless – OK

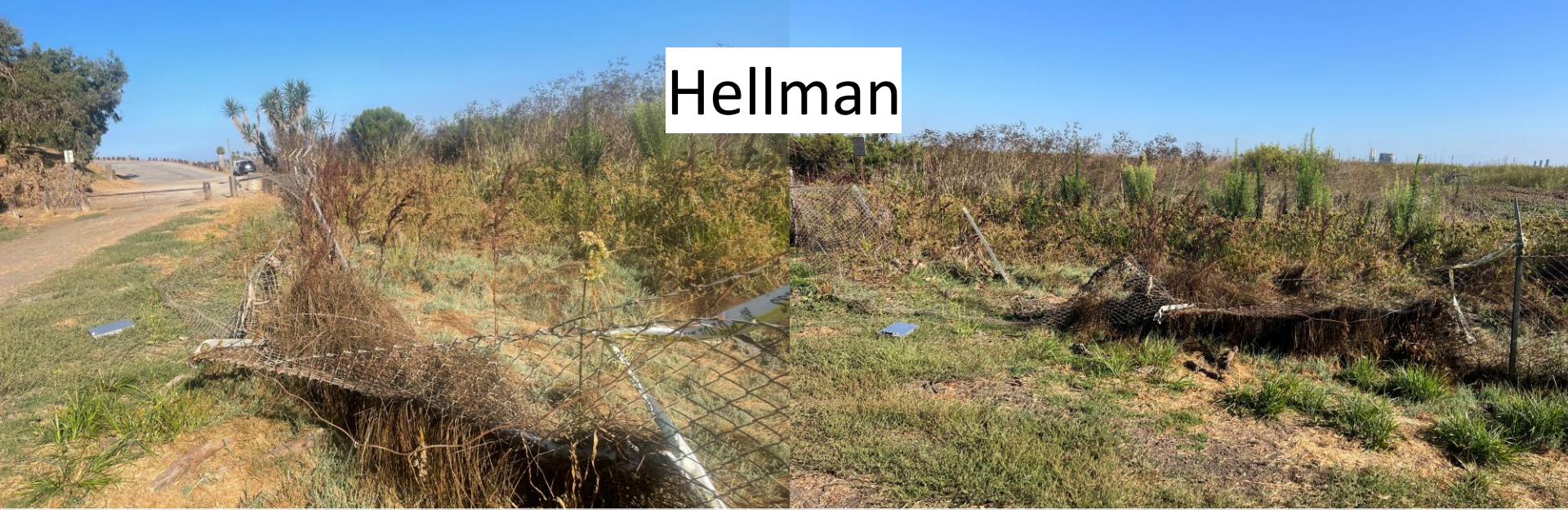
## Map

---

The photos of the issues and observations detailed above are labeled by number on the map below. The number indicates the location of these issues and observations.



# Hellman



Damaged Fence near Gum Grove Park entrance



Barbed wire fence repair

# State Lands



Damaged gate hinges

# Zedler Marsh



Off-road biking within Calloway Marsh



Off-road bike ramps removed

# Zedler Marsh



Bikes trespassing in Calloway Marsh on August 26<sup>th</sup> 2024



Fireworks found within Calloway Marsh off-road biking trails on August 30<sup>th</sup> 2024



Trespassing within Signal Hill Property



Pedestrian gate damage and temporary repair

# Bryant Lease West



Breaches in fence



Entrance gate damaged



Levee gates found open

# Bryant Lease West



Breaches in fence



Entrance gate city lock removed

# Bryant Lease West



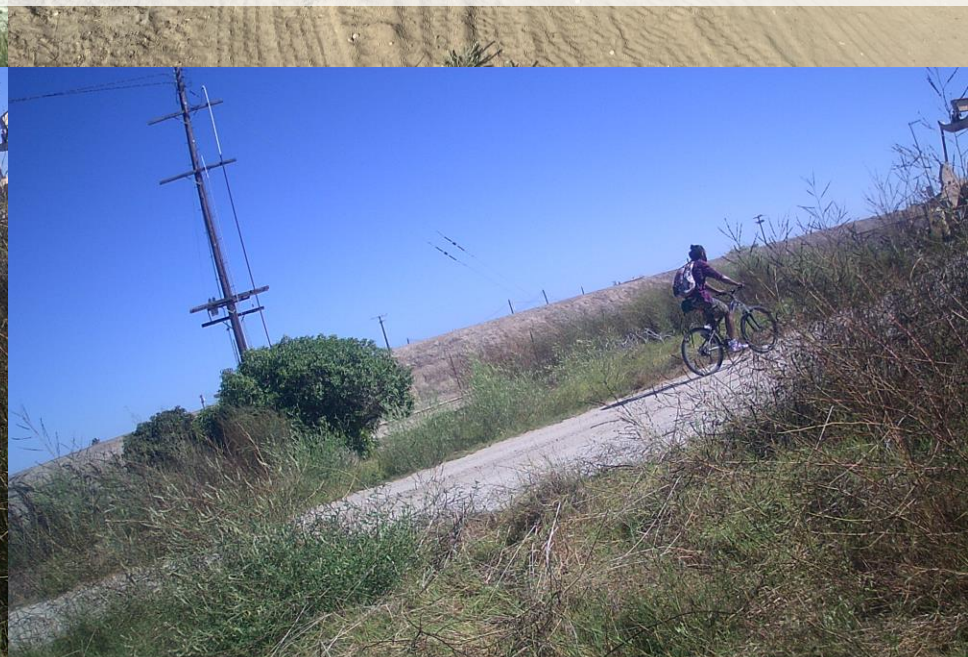
Off-road biking within Bryant Lease West on 7/29/2024



Dirt bike ramps removed



Trespassers on road



# Steamshovel Slough



Trash bag piles found

## Field Report Memorandum

**To:** Chad Oberly, LCWA

**From:** Trenton McColl, Tidal Influence

**Cc:** Eric Zahn, Tidal Influence, Mark Stanley, LCWA, Salian Garcia, LCWA

**Date:** October 16<sup>th</sup>, 2024

**Subject:** Land Management Field Report

Sites Inspected: Hellman/Gum Grove, State Lands Parcel, Zedler Marsh, Bryant Lease West, and Steamshovel Slough  
Inspection Date: September 19<sup>th</sup>, 2024

Note: The locations of critical observations and issues noted in this document are called out on the map on the final page. Photos of certain issues/observations are attached at the end of the report.

### Hellman

---

1. Gates – OK
2. Trails – OK
3. Fences –
  - a. Multiple fence posts had been damaged along the south fence line, adjacent to Gum Grove property. (See Photos)
    - i. **Tidal Influence staff contacted fencing contractors for quotes on fence repair. If feasible, a contractor will coordinate with LCWA to repair the fence line within the upcoming months to ensure site security.**
4. Homeless –
  - a. Encampment materials were found at the Hellman Pedestrian Gate. (See Photos)
    - i. **Tidal Influence Staff coordinated with the LCWA Encampment Remediation contractor to remove materials to ensure site safety.**

### State Lands Parcel

---

5. Gates –
  - a. Gate hinges are loose on the north gate, making the gate difficult to fully open. (See Photos)
    - i. **Tidal Influence staff will continue to make repairs to the gate in the upcoming months to ensure access.**
6. Trails – OK
7. Fences –
  - a. A breach was found along the north fence line, exposing the access road to the fishing hole. (See Photos)
    - i. **The fence will be repaired within the month to ensure site access is secured for intended parties.**
8. Homeless – OK

## Zedler Marsh

---

9. Gates –
  - a. Gate repairs were completed by contractors in coordination with Tidal Influence staff, to ensure site security. (See Photos)
10. Trails –
  - a. Trespassing was documented by trail cameras on Signal Hill Petroleum property. (See Photos)
    - i. **Tidal Influence staff will continue to monitor the area for non-beneficial use. Further security measures are being implemented by the Tidal Influence and Signal Hill Petroleum staff.**
11. Fences –
  - a. The ‘Calloway Marsh’ area near the southern end of the property continues to be affected by off-road bike riding. 4 dirt ramps were constructed within wetland vegetation and removed on August 30<sup>th</sup>, 2024. Large holes were left adjacent to the ramps. An undetonated illegal firework was found within the off-road biking area. 2 dirt ramps were constructed within the following week and removed on September 6<sup>th</sup>, 2024. Trails have been cut through areas of wetland vegetation. (See Photos)
    - i. **Tidal Influence staff will remove any ramps created within the week to prevent off-road biking. Staff will coordinate with CCLB and contractors to secure the property for intended parties and continue to monitor the area for non-beneficial use. Tidal Influence staff contacted LADWP Security to report off-road biking on September 13<sup>th</sup>, 2024, near the Hanes Cooling Channel. LADWP Security will be contacted anytime off-road biking is witnessed while staff is present.**
12. Homeless – OK

## Bryant Lease West

---

13. Gates –
  - a. The county locked the levee gates along the river path, but the gates were found open again the next week. (See Photos)
    - i. **LCWA staff met with LA County to determine a course of action to secure the property. The county will continue to lock and repair the gates to secure property access for intended parties.**
  - b. The northwest entrance gate was found damaged, making the gate difficult to close. (See Photos)
    - i. **We recommend repairing or replacing the gate to secure property access for intended parties.**
  - c. The city lock was removed again from the river path’s south entrance gate. (See Photos)
    - i. **Tidal Influence will continue to coordinate with the city to replace the city lock, and secure property access for the intended parties.**
14. Trails –
  - a. Trail cameras captured several instances where members of the public were walking and biking on private property. Trespassing, likely by the same individuals, appeared especially active from September 14<sup>th</sup> to September 18<sup>th</sup>. Public persons likely entered through holes in the fence and the levee gates. (See Photos)
    - i. **Tidal Influence staff will continue to monitor the area for non-beneficial use. Signal Hill Petroleum and Tidal Influence staff will continue to contact law enforcement if off-road biking is witnessed while staff is present.**
15. Fence –
  - a. 3 breaches were found along the east fence line, exposing the parcel to the bike path. (See Photos)
    - i. **The LA County Flood Control Construction Department repaired a section of fence. They continue to repair the fence breaches to secure property access to intended parties.**
16. Homeless – OK

## Steamshovel Slough

---

17. Gates – OK
18. Trails –
  - a. Trash bags were picked up by the individual who collected the trash to ensure site cleanliness.
    - i. **The individual who volunteered has been contacted by the LCWA Land Management team to promote coordination and express appreciation for reducing waste pollution.**
19. Fences – OK
20. Homeless – OK

## Map

---

The photos of the issues and observations detailed above are labeled by number on the map below. The number indicates the location of these issues and observations.



# Hellman

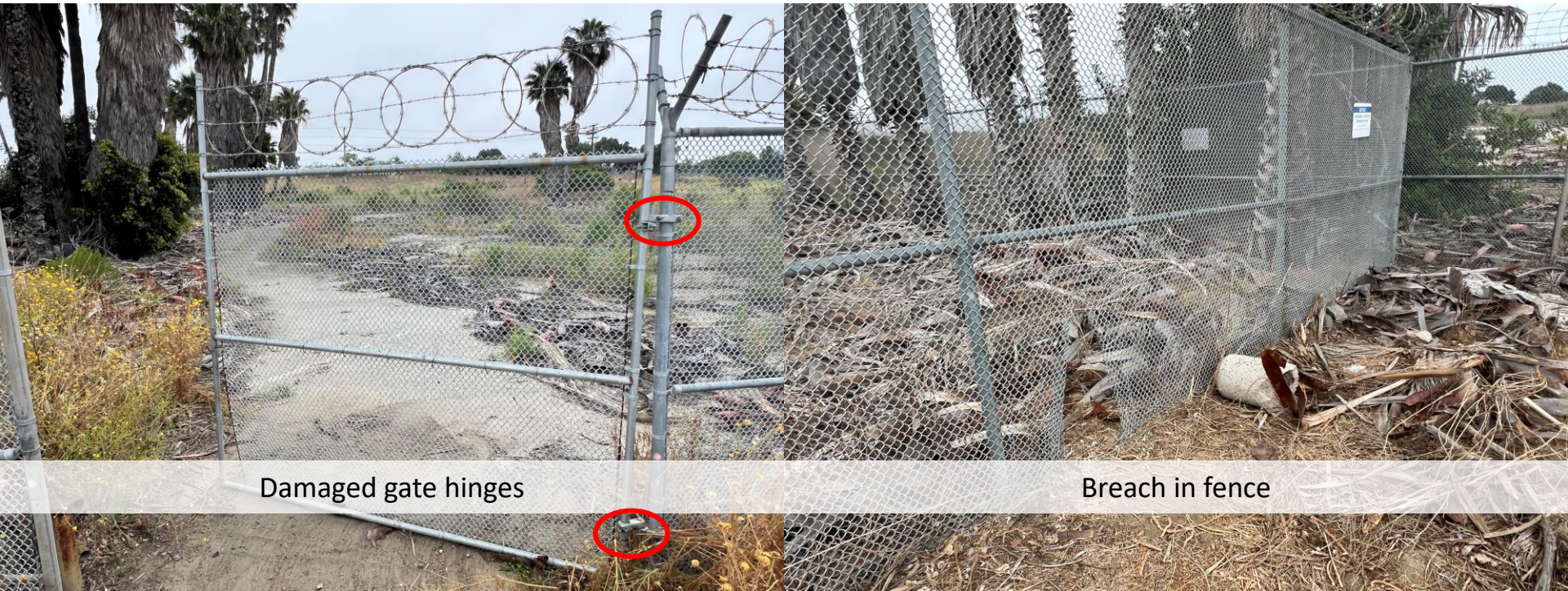


Damaged Fence near Gum Grove Park entrance



Encampment Materials Remediated

# State Lands



Damaged gate hinges

Breach in fence

# Zedler Marsh



Off-road biking within Calloway Marsh



Bikes trespassing in Calloway Marsh on September 13<sup>th</sup> 2024



Offroad Bike Ramps Removed September 19<sup>th</sup> 2024



# Zedler Marsh



Pedestrian gate repair

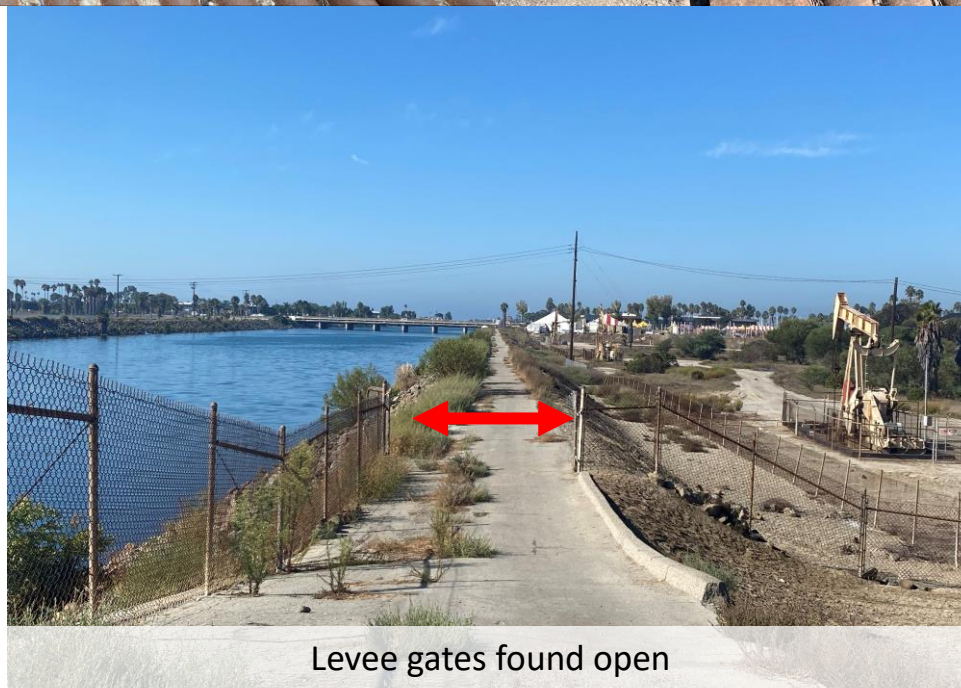


Trespassing on Signal Hill Petroleum Property

# Bryant Lease West



Fence repair



Levee gates found open

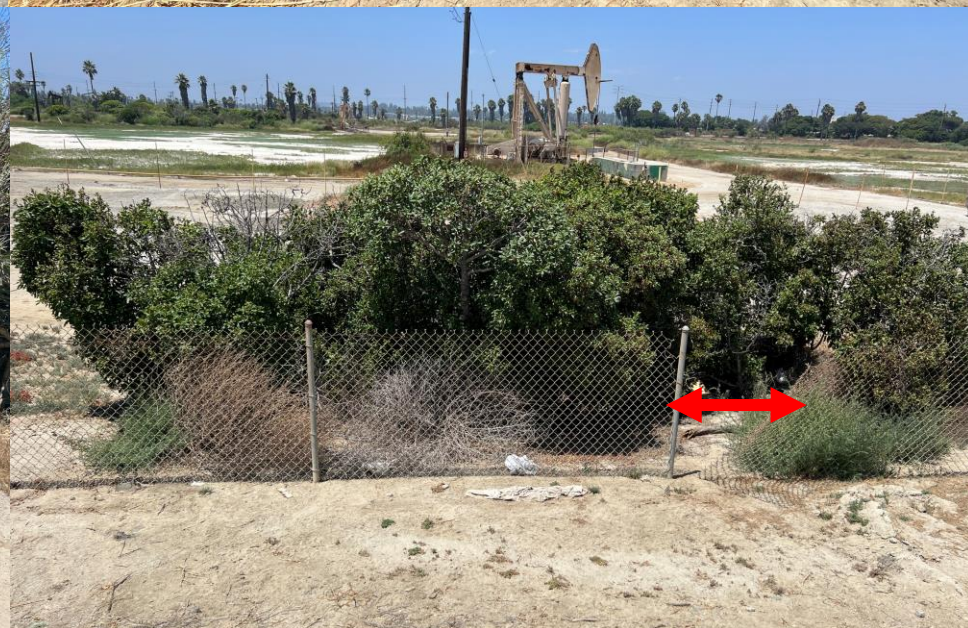
# Bryant Lease West



Breaches in fence



Entrance Gate Damaged



Breaches in fence

# Bryant Lease West



Trespassers on road

