



Field Report Memorandum

To: Chad Oberly, LCWA

From: Sebastian De Leon, Tidal Influence

Cc: Eric Zahn, Tidal Influence, Mark Stanley, LCWA

Date: February 06, 2025

Subject: Land Management Field Report

Sites Inspected: Hellman/Gum Grove, State Lands Parcel, Zedler Marsh, Bryant Lease West, and Steamshovel Slough
Inspection Date: January 27th, 2025

Note: The locations of critical observations and issues noted in this document are called out on the map on the final page. Photos of certain issues/observations are attached at the end of the report.

Hellman

1. Gates – OK
2. Trails – OK
3. Fences –
 - a. Tidal Influence staff patched hole in the fence along the Gum Grove parking lot fence line to prevent unauthorized access. (See Photos)
 - b. Tidal Influence staff patched hole in the fence along the Gum Grove access road fence line to prevent unauthorized access. (See Photos)
4. Homeless – OK

State Lands Parcel

5. Gates –
 - a. Gate hinges are loose on the north gate, making the gate difficult to fully open. (See Photos)
 - i. **At the LCWA's request, Tidal Influence staff can obtain quotes from contractors to repair the gate in the upcoming months to ensure access.**
6. Trails – OK
7. Fences – OK
8. Homeless – OK

Zedler Marsh

9. Gates – OK
10. Trails –
11. Fences – OK
12. Homeless – OK

Bryant Lease West

13. Gates –

- a. San Gabriel River levee gates open and damaged. (See Photos)
 - i. **Tidal Influence staff contacted LA County staff to inform them of gate damage and removed locks.**

14. Trails –

- a. Trespassers observed on security camera footage. (See Photos)
 - i. **Tidal Influence staff will continue to document occurrences and contact the Long Beach Police Department if they observe trespassers on site.**
- b. Shifted camera angle to reduce glare from sun. (See Photos)

15. Fence – OK

16. Homeless – OK

Steamshovel Slough

17. Gates – OK

18. Trails –

- a. “Private Property” sign knocked over. (See Photos)
 - i. **Tidal Influence staff will bring appropriate equipment to reinstall sign during next site visit.**

19. Fences – OK

20. Homeless – OK

Map

The photos of the issues and observations detailed above are labeled by number on the map below. The number indicates the location of these issues and observations.



3a

Hellman

3a



3b



3b

Repair holes in fence along Gum Grove parking lot

State Lands



Damaged gate hinges

13a



Bryant Lease West

13a



Levee gate damaged and open

14a



14a



Trespassers accessing site via unlocked levee gate

14b

Bryant Lease West



Shifted camera angle to minimize blinding from sun

14b



Retired camera angle

14b



New camera angle

Steamshovel Slough



Downed "Private Property" sign at steam shovel

Field Report Memorandum

To: Chad Oberly, LCWA

From: Sebastian De Leon, Tidal Influence

Cc: Eric Zahn, Tidal Influence, Mark Stanley, LCWA

Date: March 10, 2025

Subject: Land Management Field Report

Sites Inspected: Hellman/Gum Grove, State Lands Parcel, Zedler Marsh, Bryant Lease West, and Steamshovel Slough
Inspection Date: February 27th, 2025

Note: The locations of critical observations and issues noted in this document are called out on the map on the final page. Photos of certain issues/observations are attached at the end of the report.

Hellman

1. Gates – OK
2. Trails –
 - a. The dirt road that branches off of 1st Street towards Heron Point was closed off due to muddy conditions from rain (**Photo 2a**). Despite the road closure, this area was accessed while it was wet, and ruts were created. (**See Photos 2a_i, 2a_{ii}**)
 - i. **Tidal Influence staff will assess the road at the end of the wet season and appropriate measures will be taken to make repairs as necessary.**
 - b. Rutting has developed on LCWA side of the gate connecting SLCW to Gum Grove Park due to runoff from rain. (**See Photos 2b, 2b_i**)
 - i. **Tidal influence staff will assess the trail at the end of the wet season and appropriate measures will be taken to make repairs as necessary.**
3. Fences – OK
4. Homeless – OK

State Lands Parcel

5. Gates –
 - a. The gate hinges are loose on the north gate, making the gate difficult to fully open. (**See Photo 5a**)
 - i. **At the LCWA's request, Tidal Influence staff can obtain quotes from contractors to repair the gate in the upcoming months to ensure access.**
6. Trails – OK
7. Fences – OK
8. Homeless – OK

Zedler Marsh

- 9. Gates – OK
- 10. Trails – OK
- 11. Fences – OK
- 12. Homeless – OK

Bryant Lease West

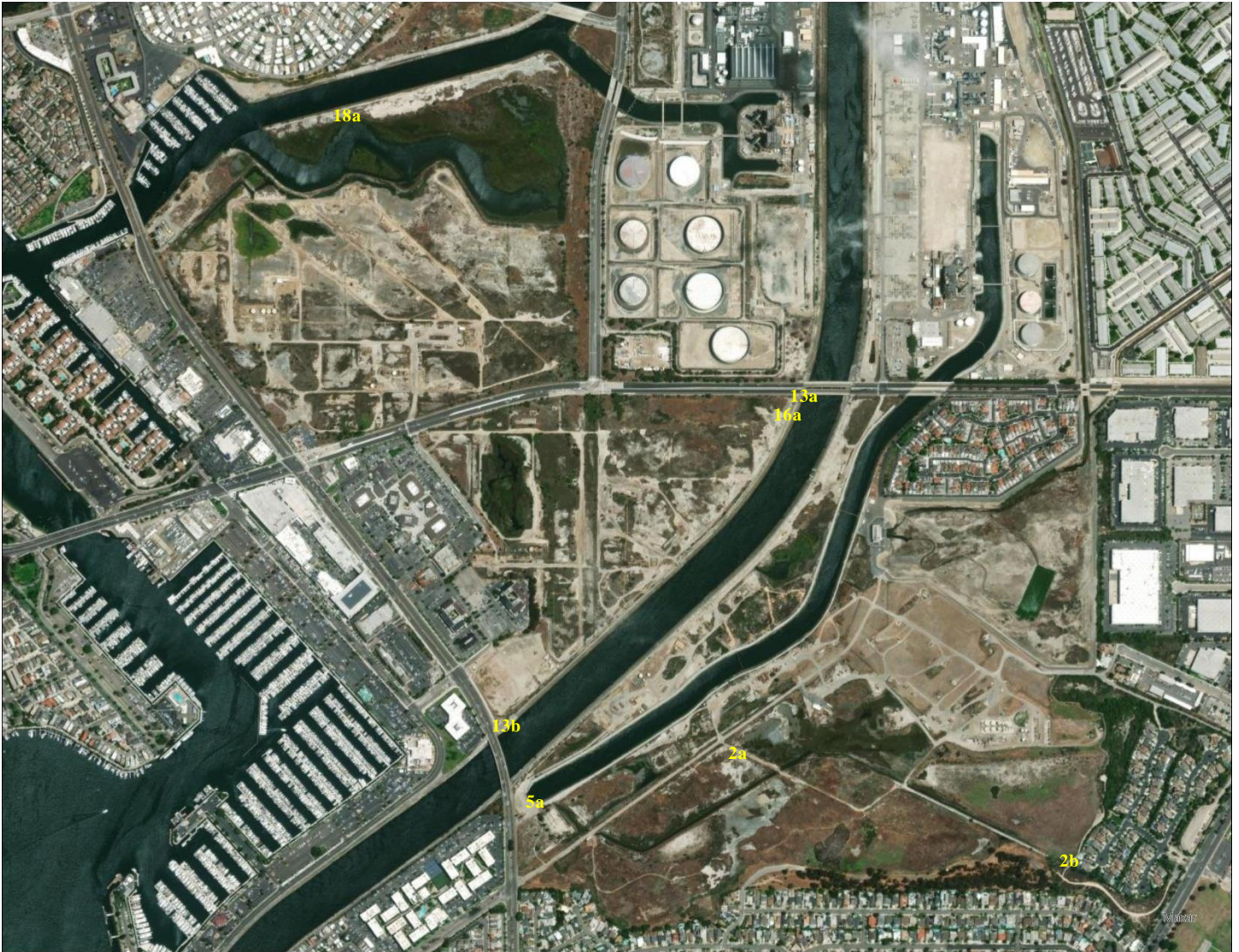
- 13. Gates –
 - a. Gate providing access to the San Gabriel River levee via 2nd street open. **(See Photo 13a)**
 - i. **Tidal Influence staff have contacted LA County staff to inform them of the unlocked gate.**
 - b. Lock on gate providing access to the San Gabriel River levee via PCH broken. The gate is not on LCWA land; however, it provides direct access to LCWA property. **(See Photo 13b)**
 - i. **Tidal Influence staff have contacted LA County staff to inform them of the damaged lock.**
- 14. Trails – OK
- 15. Fence – OK
- 16. Homeless –
 - a. An encampment was observed along the fence dividing Bryant Lease West from LA Department of Public Works land. While the encampment is not located on LCWA property, access to it requires traversing LCWA land. This unauthorized use poses a security concern for LCWA, making remediation of the encampment important for site security. **(See Photos 16a, 16i)**
 - i. **The encampment has since been cleared, and Tidal Influence staff will continue working in coordination with the LCWA's designated homeless liaison contractor and neighboring landowners. Tidal Influence staff will remove trail leading down slope to discourage future encampments.**

Steamshovel Slough

- 17. Gates – OK
- 18. Trails –
 - a. "Private Property" sign knocked over on LCWA property. **(See Photos 18a, 18a_i)**
 - i. **Tidal Influence staff repositioned the sign to face neighboring properties, deterring unauthorized access to LCWA property.**
- 19. Fences – OK
- 20. Homeless – OK

Map

The photos of the issues and observations detailed above are labeled by number on the map below. The number indicates the location of these issues and observations.



2a

Hellman



Dirt road closed off due to muddy conditions from rain.

2ai



2aii



Dirt road accessed despite closure

2b

Hellman

2bi

Rutting in front of gate connecting SLCW to Gum Grove Park

State Lands



Damaged gate hinges.

13a



Levee gate open

13b



Gate lock damaged

16a



Encampment on neighboring property along Bryant Lease West fence line

16ai



18a

Steamshovel Slough



18ai



Reinstalled "Private Property" sign

Field Report Memorandum

To: Chad Oberly, LCWA

From: Sebastian De Leon, Tidal Influence

Cc: Eric Zahn, Tidal Influence, Mark Stanley, LCWA

Date: April 10th, 2025

Subject: Land Management Field Report

Sites Inspected: Hellman/Gum Grove, State Lands Parcel, Zedler Marsh, Bryant Lease West, and Steamshovel Slough
Inspection Date: March 17th, 2025

Note: The locations of critical observations and issues noted in this document are called out on the map on the final page. Photos of certain issues/observations are attached at the end of the report.

Hellman

1. Gates – OK
2. Trails –
 - a. Rutting has continued to develop on LCWA side of the gate connecting SLCW to Gum Grove Park due to runoff from rain. **(See Photos 2b, 2bi)**
 - i. **Tidal influence staff will repair the trail rutting before the next guided nature walk to ensure accessibility.**
3. Fences – OK
4. Homeless – OK

State Lands Parcel

5. Gates –
 - a. The gate hinges are loose on the north gate, making the gate difficult to fully open. **(See Photo 5a)**
 - i. **At the LCWA's request, Tidal Influence staff can obtain quotes from contractors to repair the gate in the upcoming months to ensure access.**
6. Trails –
 - a. Palm fronds were cleared from the State Lands concrete slab in anticipation of the SLCWRP Public Workshop. **(See Photos 6a, 6ai, 6aii, 6aiii)**
7. Fences – OK
8. Homeless – OK

Zedler Marsh

- 9. Gates – OK
- 10. Trails –
 - a. Noticeable rutting near salt marsh habitat on private property adjacent to Zedler Marsh upon entering through yellow entrance gates. (See Photos 9a, 9ai, 9aii)
 - i. **Tidal Influence staff will continue to monitor and document unauthorized road use and contact authorities when appropriate. Though it did not take place on LCWA property, it is important to take preventative measures to ensure LCWA land is not impacted in the future. Tidal Influence staff has coordinated with SHP to restrict site access to unauthorized parties. An additional security camera may be installed if activity continues.**
- 11. Fences – OK
- 12. Homeless – OK

Bryant Lease West

- 13. Gates –
 - a. Gate providing access to the San Gabriel River levee via PCH street open. (See Photos 13a, 13ai)
 - i. **Tidal Influence staff have contacted LA County staff to inform them of the unlocked gate.**
 - b. Gate providing access through the San Gabriel River levee was left unlocked. The gate is not on LCWA land; however, it provides direct access to LCWA property. (See Photos 13b, 13bi)
 - i. **Tidal Influence staff have contacted LA County staff to inform them of the unlocked gate.**
- 14. Trails – OK
- 15. Fence –
 - a. A damaged segment of fence separating Bryant Lease West from the San Gabriel River levee was repaired to restrict unauthorized site use.
- 16. Homeless –
 - a. A houseless individual had set up an encampment under the San Gabriel River levee cattle grate that leads to Bryant Lease West. (See Photos 16a)
 - i. **Tidal Influence staff coordinated with the LCWA's designated homeless liaison contractor. The encampment has since been cleared and the site will continue to be monitored for unauthorized use.**
 - b. An unauthorized individual was caught on security footage accessing Bryant Lease West from the San Gabriel River. No evidence of an encampment was found on the Bryant Lease property. (See Photos 16b)
 - i. **Tidal Influence staff will continue working in coordination with the LCWA's designated homeless liaison contractor and neighboring landowners. Tidal Influence staff will continue to monitor and document unauthorized land use.**

Steamshovel Slough

- 17. Gates – OK
- 18. Trails – OK
- 19. Fences – OK
- 20. Homeless – OK

Map

The photos of the issues and observations detailed above are labeled by number on the map below. The number indicates the location of these issues and observations.



2a

Hellman



2ai



Rutting in front of gate connecting SLCW to Gum Grove Park



State Lands



Damaged gate hinges

6a



State Lands

6ai



Concrete slab covered with fallen palm fronds from Mexican fan palms

6aii



6aiii



Palm fronds on concrete slab cleared for SLCWRP public workshop

9a

Zedler

9ai



Offroad vehicle driving around sensitive salt marsh habitat on neighboring property

9a ii



13a



SGR levee gate unlocked

13ai



Lock not in use

13b



PCH access gate to SGR levee unlocked

13bi



No lock to SGR levee gate

15a

15ai

Bryant Lease West



Damaged fence line repaired

16a

16b



Encampment under SGR levee cattle grate cleared



Unauthorized access caught on security camera