

Field Report Memorandum

To: Chad Oberly, LCWA

From: Sebastian De Leon, Tidal Influence

Cc: Eric Zahn, Tidal Influence, Mark Stanley, LCWA

Date: June 9th, 2025

Subject: Land Management Field Report

Sites Inspected: Hellman/Gum Grove, State Lands Parcel, Zedler Marsh, Bryant Lease West, and Steamshovel Slough
Inspection Dates: May 21th, 2025, May 30th, 2025

Note: The locations of critical observations and issues noted in this document are called out on the map on the final page. Photos of certain issues/observations are attached at the end of the report.

Hellman

1. Gates – OK
2. Trails –
 - a. Weeds continue to grow in the SLCW equipment yard. (See Photos 2a¹⁻⁴)
 - i. **Tidal Influence staff will clear weeds from the equipment yard to maintain access to equipment and materials.**
 - b. Weeds continue to grow on SLCW access trails. (See Photos 2b¹⁻⁴)
 - i. **Tidal Influence staff, with assistance from CCLB, will clear weeds from the access trails before the next guided site tour to promote accessibility. Tidal influence will ensure no special status species are impacted during this process.**
3. Fences – OK
4. Homeless – OK

State Lands Parcel

5. Gates –
 - a. Weeds growing around the State Lands access gates are preventing the gates from fully opening and restricting access through the site. (See Photos 5a^{1,2})
 - i. **Tidal Influence staff will clear weeds around the access gates before the next public restoration event to promote accessibility. Tidal influence will ensure no special status species are impacted during this process.**
 - b. The gate hinges are loose on the north gate, making the gate difficult to fully open. (See Photo 5b)
 - i. **At the LCWA's request, Tidal Influence staff can obtain quotes from contractors to repair the gate in the upcoming months to ensure access.**
6. Trails –
 - a. Weeds are growing on the States Land access trail. (See Photo 6a)
 - i. **Tidal Influence staff will clear weeds from the access trails before the next public nature walk to promote accessibility. Tidal influence will ensure no special status species are impacted during this process.**
7. Fences – OK
8. Homeless – OK

Zedler Marsh

9. Gates – OK

10. Trails –

- a. Rutting near salt marsh habitat on private property adjacent to Zedler Marsh leading down from an unfenced region. (See Photos 10a^{1,2})
 - i. **Tidal Influence staff will continue to monitor and document unauthorized road use and contact authorities when appropriate. Though the rutting did not take place on LCWA property, it is important to take preventative measures to ensure LCWA land is not impacted in the future.**
- b. Anna's Hummingbird nesting near public trails. (See Photos 10b^{1,2})
 - i. **Tidal Influence staff established an appropriate buffer to facilitate a successful nesting attempt. Tidal influence staff will continue to monitor the nest until it is determined to be inactive.**
- c. Motorized bikers constructed ramps and littered trash around Calloway Marsh. (See Photos 10c¹⁻⁴)
 - i. **Tidal Influence staff demolished ramps construction on Calloway Marsh with assistance from CCLB and cleared litter along the access road connecting Zedler Marsh to the Haynes Cooling Channel. Though the ramp building and littering did not take place on LCWA property, the access road is utilized for public restoration events and guided site tours. In addition, it is important to take preventative measures to ensure LCWA land is not impacted in the future. Tidal Influence will continue to monitor and document unauthorized property use and contact authorities when appropriate.**

11. Fences – OK

12. Homeless – OK

Bryant Lease West

13. Gates – OK

14. Trails – OK

15. Fence –

- a. A segment of fence had been damaged and knocked over from unauthorized use. Trash had been littered around the damaged segment. (See Photos 15a¹⁻⁴)
 - i. **Tidal Influence staff repaired the damaged segment of fence and cleaned the remaining trash.**

16. Homeless –

- a. A houseless individual had set up an encampment under the San Gabriel River levee cattle grate that leads to Bryant Lease West. (See Photos 16a¹⁻⁴)
 - i. **Tidal Influence staff coordinated with the LCWA's designated homeless liaison contractor. The encampment has since been cleared and the homeless liaison contractor cemented off the cattle grate to prevent future unauthorized use.**

Steamshovel Slough

17. Gates – OK

18. Trails –

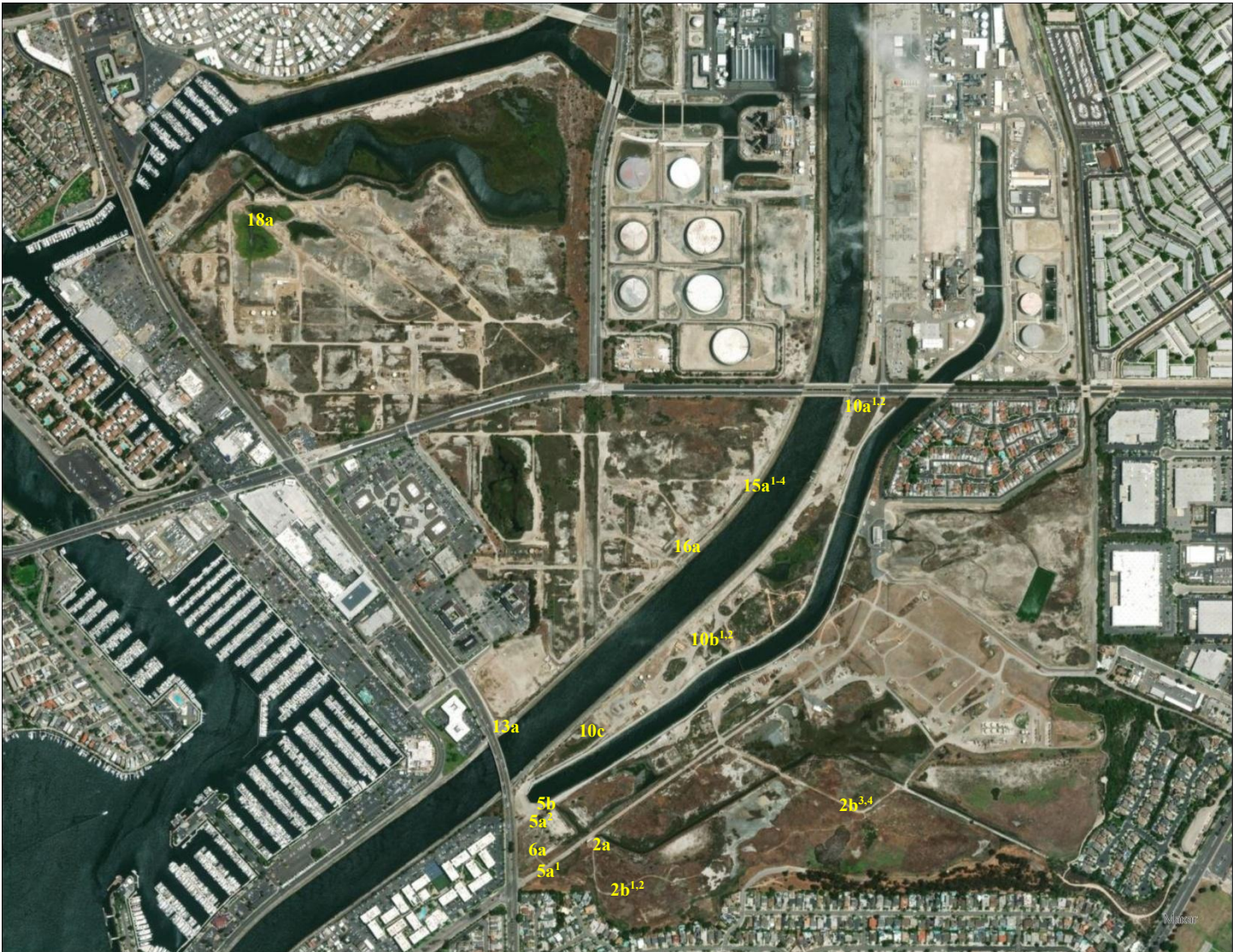
- a. Tidal Influence staff observed native nesting American Avocets and Killdeer along a Synergy service road on LCWA property. (See Photos 18a¹⁻⁴)
 - i. **Tidal Influence staff flagged off a buffer region and coordinated with Synergy to inform them of the nesting birds along their service roads. Synergy staff coned off the road to prevent traffic from disturbing the nests. Tidal influence staff will continue to monitor the nests until the nests are determined to be inactive.**

19. Fences – OK

20. Homeless – OK

Map

The photos of the issues and observations detailed above are labeled by number on the map below. The number indicates the location of these issues and observations.



2a¹



2a²



Hellman

Weeds growing on SCLW equipment yard

2a³



2a⁴



Weeds growing on SCLW equipment yard

2b¹

2b²

Hellman



Weeds and overgrown vegetation growing on access trail

2b³

2b⁴



Weeds and overgrown vegetation growing on access trail

5a¹



5a²



State Lands

Weed growth preventing gate from fully opening

5b



6a



Damaged gate hinges

Weeds growing on access trail

10a¹



Zedler

10a²



Rutting on neighboring property from E-bike activity

10b¹



10b²



Native Anna's Hummingbird nesting near public trail

10c¹



Zedler

10c²



Motorized biker ramps constructed on Calloway Marsh demolished with help from CCLB

10c¹



10c²



Trash cleared along access road connecting the Zelder Marsh property to the Haynes Cooling Channel

15a¹

15a²

Bryant Lease West



Repaired segment of fence knocked over from unauthorized access



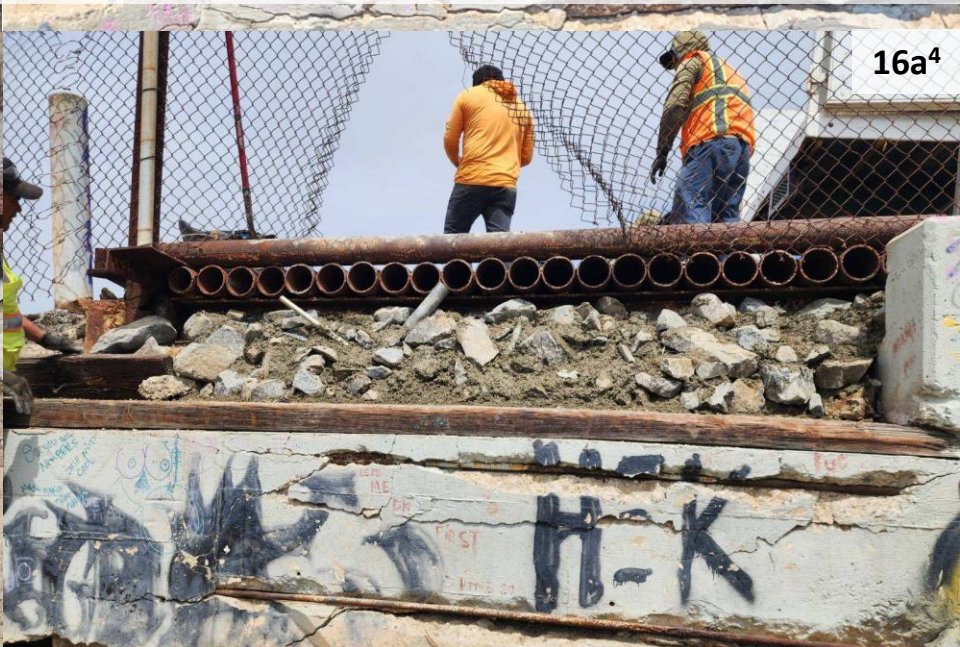
Cleared trash left behind from unauthorized use

16a¹

Bryant Lease West

16a²

Unauthorized encampment underneath SGR cattle grate

16a³16a⁴

Encampment under SGR levee cattle grate cleared and cemented off by LWCA homeless liaison contractor

18a¹18a²

Steam Shovel Slough

Nesting American Avocet and Killdeer observed along Synergy service road on LCWA property

18a³18a⁴

Tidal Influence staff flagged off buffer for nesting birds

Synergy staff coned off road to restrict traffic towards nests

Field Report Memorandum

To: Chad Oberly, LCWA

From: Sebastian De Leon, Tidal Influence

Cc: Eric Zahn, Tidal Influence, Mark Stanley, LCWA

Date: July 14th, 2025

Subject: Land Management Field Report

Sites Inspected: Hellman/Gum Grove, State Lands Parcel, Zedler Marsh, Bryant Lease West, and Steamshovel Slough
Inspection Dates: June 16th, 2025, June 30th, 2025

Note: The locations of critical observations and issues noted in this document are called out on the map on the final page. Photos of certain issues/observations are attached at the end of the report.

Hellman

1. Access –
 - a. Tidal Influence staff cleared weeds and overgrown vegetation along the entrance to SLCW with help from CCLB.
 - b. Tidal Influence staff cleared weeds and overgrown vegetation on trails used for public nature walks with help from CCLB.
 - c. Tidal Influence staff cleared weeds and overgrown vegetation on access road used for public nature walks with help from CCLB.
 - d. Tidal Influence staff cleared weeds and overgrown vegetation growing on SLCW equipment yard.
 - i. **Weed clearance and vegetation management continues to be an ongoing effort on the SLCW property.**
2. Security – OK
3. Land Stewardship –
 - a. A 100ft fire buffer was cleared along the property line adjacent to the residential neighborhood to reduce fire risk.

State Lands Parcel

4. Access –
 - a. Tidal Influence staff cleared weed growth around the access gates that was preventing them from fully opening with assistance from CCLB.
 - b. Tidal Influence staff cleared weeds and overgrown vegetation on access trail with assistance from CCLB.
 - c. The north gate hinges are still loose, making the gate difficult to fully open.
 - i. **At the LCWA's request, Tidal Influence staff can obtain quotes from contractors for repairs.**
5. Security – OK
6. Land Stewardship – OK

Zedler Marsh

- 7. Access – OK
- 8. Security –
 - a. Ramps constructed on Calloway Marsh by unauthorized motorized bikers were demolished with assistance from CCLB.
 - i. **Tidal Influence recommends that the LCWA sets up a meeting with LADWP to discuss a process for reporting issues and enforcement of trespassing.**
 - b. Unauthorized trespassers were observed on security camera footage.
 - i. **Tidal Influence will continue to monitor and document unauthorized property use and contact authorities when appropriate.**
- 9. Land Stewardship – OK

Bryant Lease West

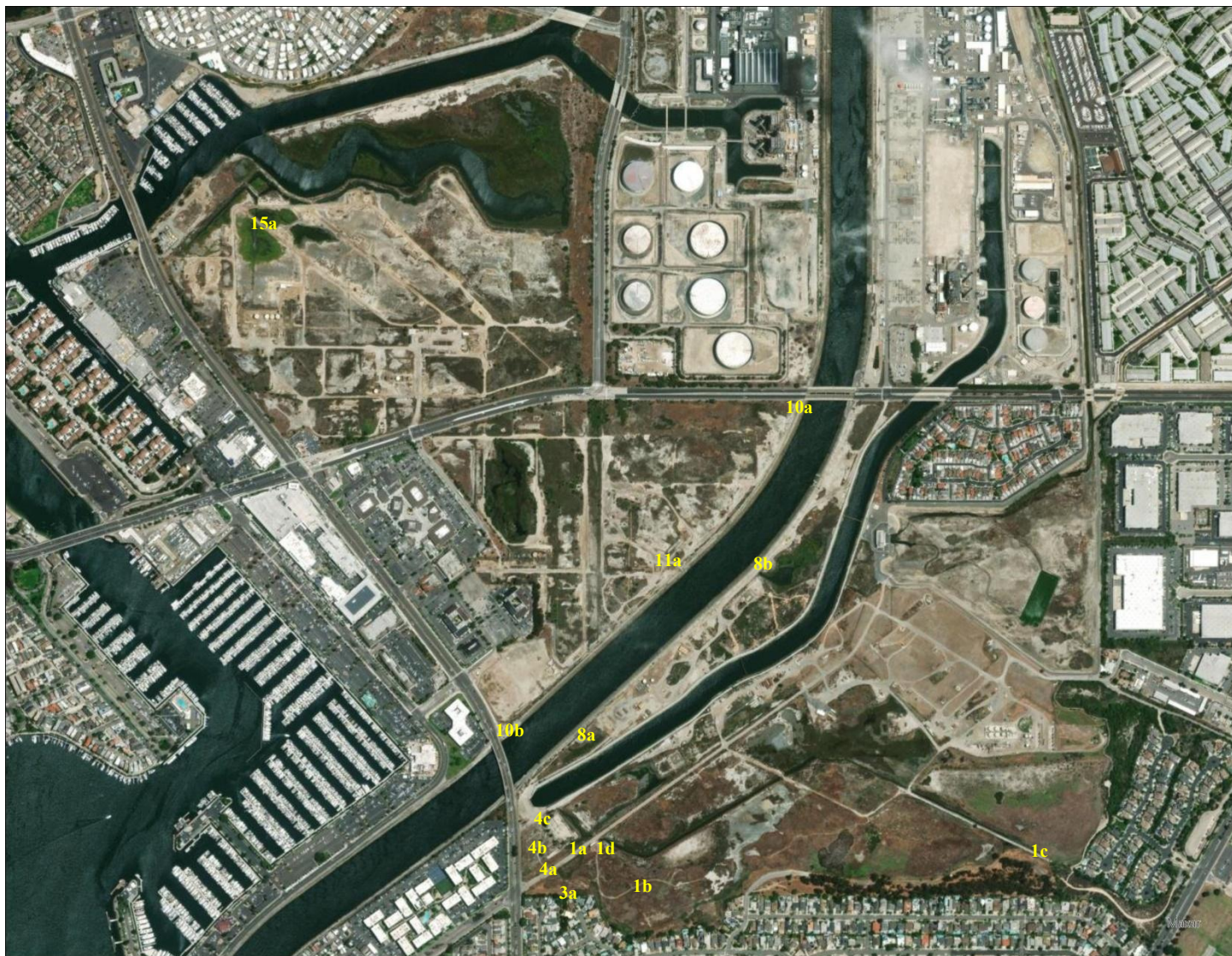
- 10. Access –
 - a. The 2nd Street access gate leading to the SGR levee is broken.
 - i. **TI Staff recommend that the LCWA sets up a meeting with LA County Public Works to discuss a process for reporting issues and enforcement of trespassing.**
 - b. The PCH access gate to the SGR levee was found unlocked. Although this gate is not on LCWA property, it provides direct access and poses a security risk.
 - i. **TI Staff recommend that the LCWA sets up a meeting with LA County Public Works to discuss a process for reporting issues and enforcement of trespassing.**
- 11. Security –
 - a. Unauthorized bike tracks were observed leading down to the property from the SGR cattle grate.
 - i. **Tidal Influence will continue to monitor and document unauthorized property use and contact authorities when appropriate.**
- 12. Land Stewardship – OK

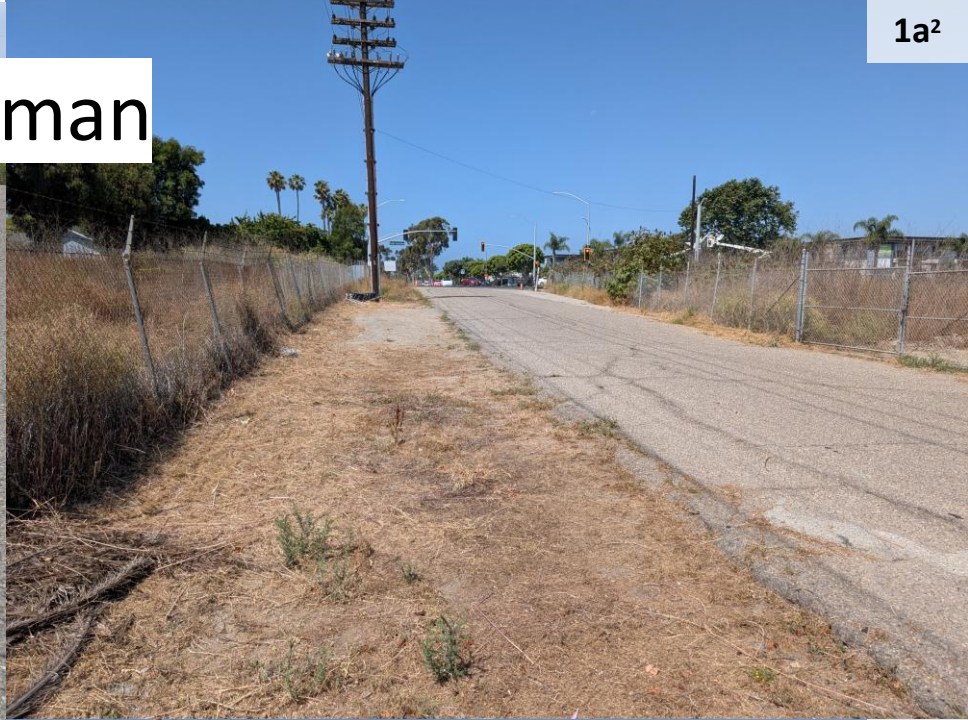
Steamshovel Slough

- 13. Access – OK
- 14. Security – OK
- 15. Land Stewardship –
 - a. Continued nesting activity from native American Avocets and Black-necked Stilts were observed along the Synergy service road on LCWA property.
 - i. **The nests will continue to be monitored until they are determined to be inactive.**

Map

The photos of the issues and observations detailed above are labeled by number on the map below. The number indicates the location of these issues and observations.





Hellman

Cleared weeds along entrance to SLCW

1b¹

1b²

Hellman



1b³

1b⁴



Cleared weeds and overgrown vegetation growing on access trail

1b⁵



Hellman

1b⁶



Cleared weeds and overgrown vegetation growing on access trail

1c¹



1c²



Cleared weeds growing on SLCW access road



Cleared weeds growing on SLCW equipment yard

1d⁵



Hellman

1d⁶



Cleared weeds growing on SCLW equipment yard

1d⁷



1d⁸



Weeds continue to grow on SLCW equipment yard

3a¹

3a²

Hellman



3a³

3a⁴



Cleared 100ft buffer from residential neighborhood

3a⁵

3a⁶

Hellman



3a⁷

3a⁸



Fire buffer clearance along property line

4a¹



4a²

State Lands

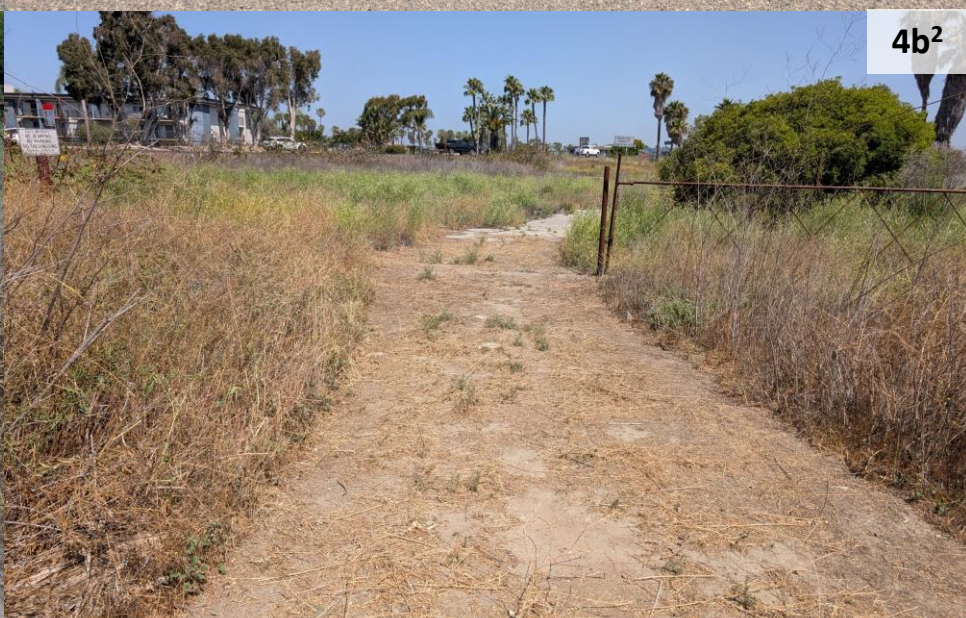


Cleared weed growth preventing gate from fulling opening

4b¹



4b²



Cleared weeds growing on access trail

State Lands



Damaged gate hinges

8a¹



Zedler

8a²



8a³



8a⁴



Motorized biker ramps constructed on Calloway Marsh demolished with help from CCLB

Zedler



Unauthorized trespassers caught on security footage

10a



2nd Street access gate to SGR levee broken

10b



PCH access gate to SGR levee unlocked

11a¹

Unauthorized bike tracks leading down to property

11a²

M 33 °C / 91 °F 06/14/2025 11:54:28 AM



Steam Shovel Slough



Continued nesting activity observed along Synergy service road on LCWA property



Tidal Influence maintains buffer for nesting birds

Synergy staff maintains road coned off for nesting birds

Field Report Memorandum

To: Chad Oberly, LCWA

From: Sebastian De Leon, Tidal Influence

Cc: Eric Zahn, Tidal Influence, Mark Stanley, LCWA

Date: August 22nd, 2025

Subject: Land Management Field Report

Sites Inspected: Hellman/Gum Grove, State Lands Parcel, Zedler Marsh, Bryant Lease West, and Steamshovel Slough
Inspection Dates: July 17th, 2025, July 31st, 2025

Note: The locations of critical observations and issues noted in this document are called out on the map on the final page. Photos of certain issues/observations are attached at the end of the report.

Hellman

1. Access –
 - a. Tidal Influence staff cleared weeds and overgrown vegetation on trails used for public nature walks with help from CCLB.
 - b. Tidal Influence staff cleared weeds and overgrown vegetation on access road used for public nature walks with help from CCLB.
 - c. Tidal Influence staff cleared weeds and overgrown vegetation growing on SLCW equipment yard.
 - i. **Weed clearance and vegetation management continues to be an ongoing effort on the SLCW property.**
2. Security – OK
3. Land Stewardship – OK

State Lands Parcel

4. Access –
 - a. The north gate hinges are still loose, making the gate difficult to fully open.
 - i. **At the LCWA's request, Tidal Influence staff can obtain quotes from contractors for repairs.**
5. Security – OK
6. Land Stewardship – OK

Zedler Marsh

- 7. Access – OK
- 8. Security –
 - a. Unauthorized motorized bikes accessed the trails via unfenced region along SGR bike trail by 2nd street bridge. The damage caused by the motorized bikes has since been repaired.
 - i. **Tidal Influence will continue to monitor and document unauthorized property use and contact authorities when appropriate.**
 - b. An unauthorized encampment was observed on LADWP property adjacent to the entrance of Zedler Marsh. The encampment has since been cleared.
 - i. **Tidal Influence staff has coordinated with the LCWA's designated homeless liaison contractor, SHPI, and LADWP staff regarding unauthorized use in and around the central LCW. Tidal Influence will continue to document unauthorized property use, and contact authorities when appropriate to prevent future impacts on or near LCWA land.**
- 9. Land Stewardship – OK

Bryant Lease West

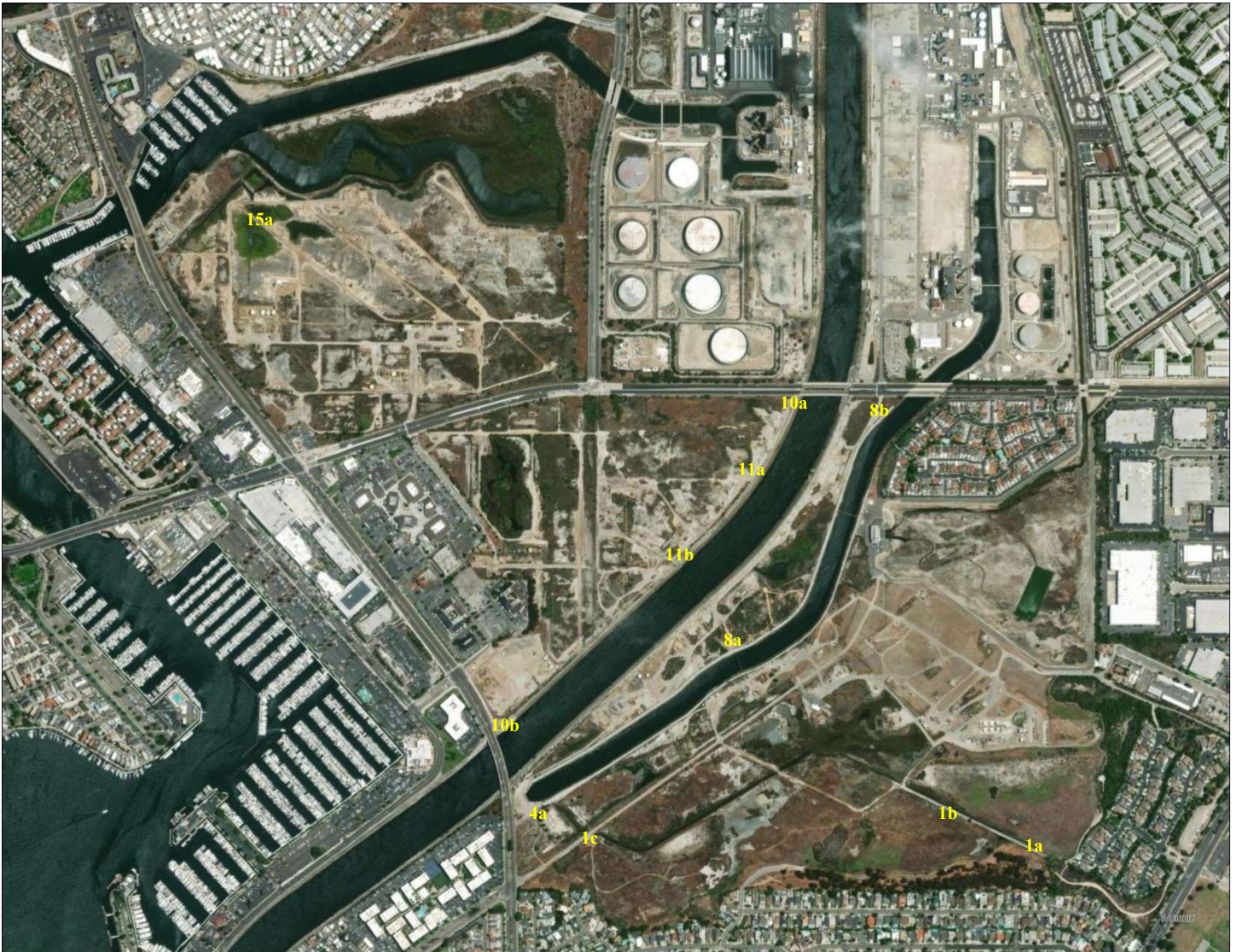
- 10. Access –
 - a. The broken 2nd Street access gate leading to the SGR levee was repaired by LA Public Works staff following coordination between LCWA staff and LA Public Works Superintendent.
- 11. Security –
 - a. Tidal Influence staff repaired hole in fence to minimize unauthorized site access.
 - b. Encampment observed underneath SGR cattle grate. Cement that was installed to restrict access has been removed.
 - i. **Tidal Influence staff remains in close coordination with the LCWA's designated homeless liaison contractor regarding unauthorized use in and around the LCWA facilities.**
- 12. Land Stewardship – OK

Steamshovel Slough

- 13. Access – OK
- 14. Security – OK
- 15. Land Stewardship –
 - a. Nesting activities were not observed along the Synergy service road on LCWA property.
 - i. **Tidal Influence staff will conduct one more survey for nesting activities in the area before the conclusion of nesting season.**

Map

The photos of the issues and observations detailed above are labeled by number on the map below. The number indicates the location of these issues and observations.



1a¹

1a²

Hellman

1a³

1a⁴

Cleared weeds and overgrown vegetation growing on access trail.

1b¹



1b²



Hellman

1b³



1b⁴



Cleared weeds and overgrown vegetation growing on access road.



Hellman



Cleared weeds growing on SCLW equipment yard.

State Lands



Damaged gate hinges.

8a¹

Zedler

8a²

8a³

8a⁴

Repaired damage caused by motorized bikers accessing via SGR bike trail.

8b¹

Zedler

8b²



Unauthorized use on LADWP adjacent to LCWA property.

8b³



8b⁴



Trash left behind from encampment. Trash and encampment have since been cleared.

10a¹10a²

Bryant Lease West



Coordinated with LA Public Works to have 2nd Street access gate to SGR levee gate repaired.

11a²

Repaired hole in fence.

Bryant Lease West



Encampment underneath SGR cattle grate.

Steamshovel Slough



No evidence of nesting birds along Synergy service road on LCWA property.

Field Report Memorandum

To: Chad Oberly, LCWA

From: Sebastian De Leon, Tidal Influence

Cc: Eric Zahn, Tidal Influence; Mark Stanley, LCWA

Date: September 12th, 2025

Subject: Land Management Field Report

Sites Inspected: Hellman/Gum Grove, State Lands Parcel, Zedler Marsh, Bryant Lease West, and Steamshovel Slough
Inspection Dates: August 22nd, 2025

Note: The locations of critical observations and issues noted in this document are called out on the map on the final page. Photos of certain issues/observations are attached at the end of the report.

Hellman

1. Access – OK
2. Security –
 - a. Tidal Influence staff repaired a hole in the fence separating SLCW from States Land by replacing a corroded chain-link with galvanized steel wire.
 - b. Tidal Influence staff patched a hole in the fence separating SLCW from the Gum Grove Park parking lot using spare material and galvanized steel wire.
3. Land Stewardship – OK

State Lands Parcel

4. Access –
 - a. The north gate hinges are still loose, making the gate difficult to fully open.
 - i. **At the LCWA's request, Tidal Influence staff can obtain quotes from contractors for repairs.**
5. Security – OK
6. Land Stewardship – OK

Zedler Marsh

7. Access – OK
8. Security –
 - a. Tidal Influence staff patched a hole in the fence separating Zedler Marsh from the SGR bike bath using spare material and galvanized steel wire.
 - b. Unauthorized individual captured on security camera along Zedler Marsh access road.
 - i. **Tidal Influence will continue to monitor and document unauthorized property use and contact authorities when appropriate.**
 - c. Unauthorized individual captured on security camera at Zedler Marsh facilities.
 - i. **Tidal Influence will continue to monitor and document unauthorized property use and contact authorities when appropriate.**
9. Land Stewardship – OK

Bryant Lease West

10. Access –

- a. SGR levee gates unlocked and open, allowing for access to BLW property.
 - i. **Tidal Influence recommends coordinating with LA Flood Control and reviewing land documents to determine if levee is a public accessway.**
- b. The 2nd Street access gate leading to the SGR levee was damaged and open.
 - i. **Tidal Influence staff remains in close coordination with LA Public Works staff to address unauthorized use and damages to the SGR levee access gate.**

11. Security –

- a. Encampment observed underneath SGR cattle grate.
 - i. **Tidal Influence staff remains in close coordination with the LCWA's designated homeless liaison contractor regarding unauthorized use in and around the LCWA facilities.**
- b. Unauthorized motorized biking activities captured on security footage across multiple dates.
 - i. **Tidal Influence staff will continue to document unauthorized use and coordinate with local authorities when appropriate to minimize impact on LCWA properties. It is recommended that the LCWA bring awareness of motorized biking activities to city councilmembers and attempt to work with local community members to establish a community wetland watch initiative to keep an eye out for suspected unauthorized use during off hours.**
- c. Bike tracks observed leading into BLW from SGR levee and 2nd street. The bike tracks lead to open areas in the BLW property along the fence line dividing the property from the SGR levee.
 - i. **Tidal Influence staff will continue to document unauthorized use and coordinate with local authorities when appropriate to minimize impact on LCWA properties.**
- d. Tidal influence demolished bike ramps build by motorized bikers and confiscated equipment the equipment used.

12. Land Stewardship – OK

Steamshovel Slough

13. Access – OK

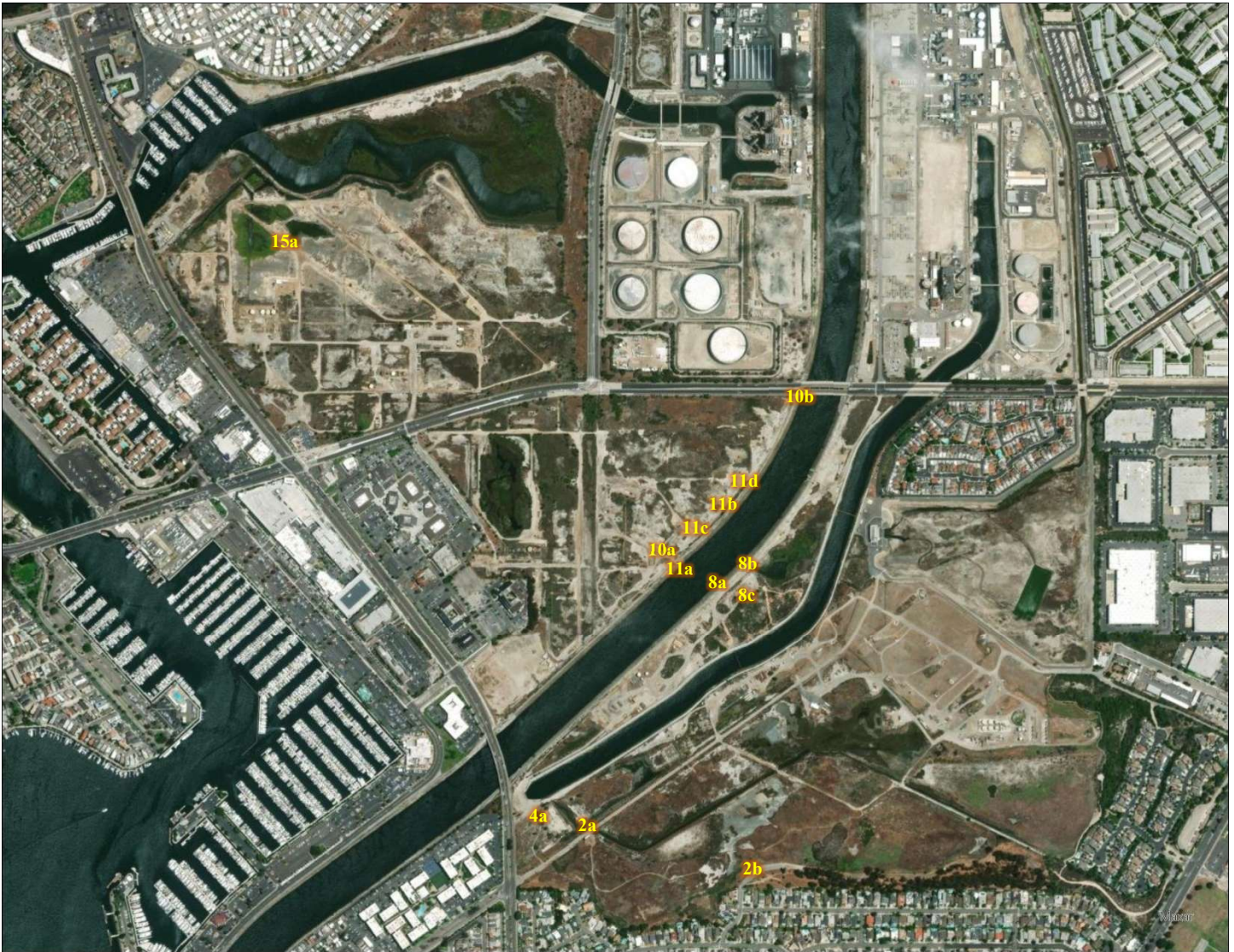
14. Security – OK

15. Land Stewardship –

- a. Nesting activities were not observed along the Synergy service road on LCWA property.
 - i. **No further monitoring is required due to the conclusion of bird nesting season.**

Map

The photos of the issues and observations detailed above are labeled by number on the map below. The number indicates the location of these issues and observations.



2a¹



2a²



Hellman

Repaired fence separating SLCW from State Lands.

2b¹



2b²



Patched hole in fence separating SLCW from Gum Grove Park parking lot.

State Lands



Damaged gate hinges.

8a¹



Zedler

8a²



8a³



8a⁴



Patched hole in fence separating Zedler Marsh from the SGR bike path.

8b

Zedler



Trespassing captured by security camera on access road.

0000 ☉ 18 °C 64 °F 2025/07/2

8c



Trespassing captured by security camera at facilities.

☉ 17 °C 62 °F 08/15/2025 19:58:



Bryant Lease West

SGR levee gates open and unlocked.



2nd street access gate damaged and open.



Encampment underneath SGR cattle grate.

11b¹

Bryant Lease West

11b²



Unauthorized motorized biking captured on security camera footage.

36 °C / 96 °F 08/03/2025 01:04:24 PM

28 °C / 82 °F 08/13/2025 04:20:55 PM

11b³

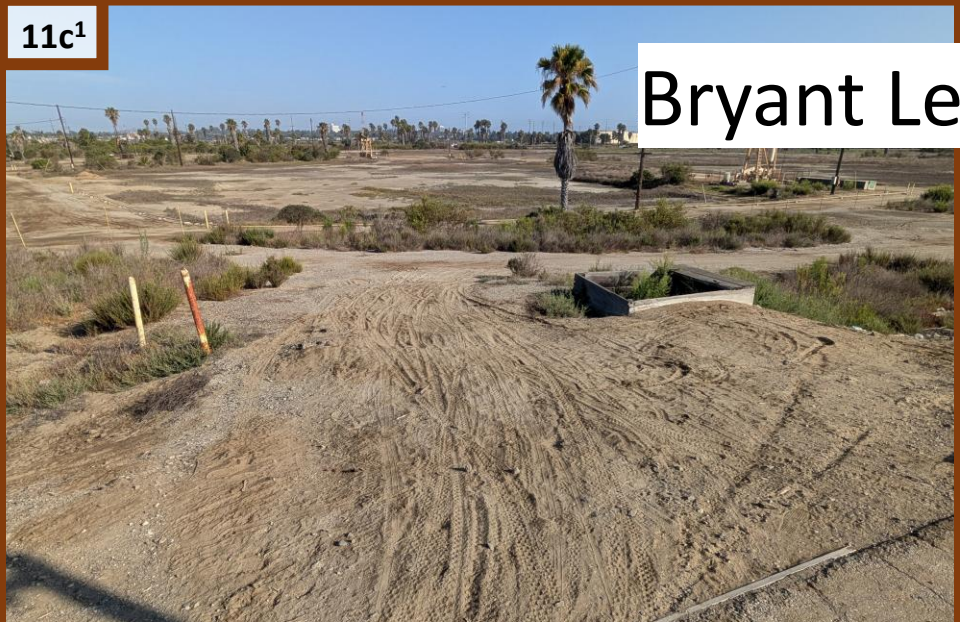
11b⁴



Unauthorized motorized biking captured on security footage.

°C / 82 °F 08/17/2025 05:43:53 PM

28 °C / 82 °F 08/17/2025 05:44:29 PM



Bike tracks leading down from SGR levee.



Bike tracks along fence line and equipment used to build bike rams.



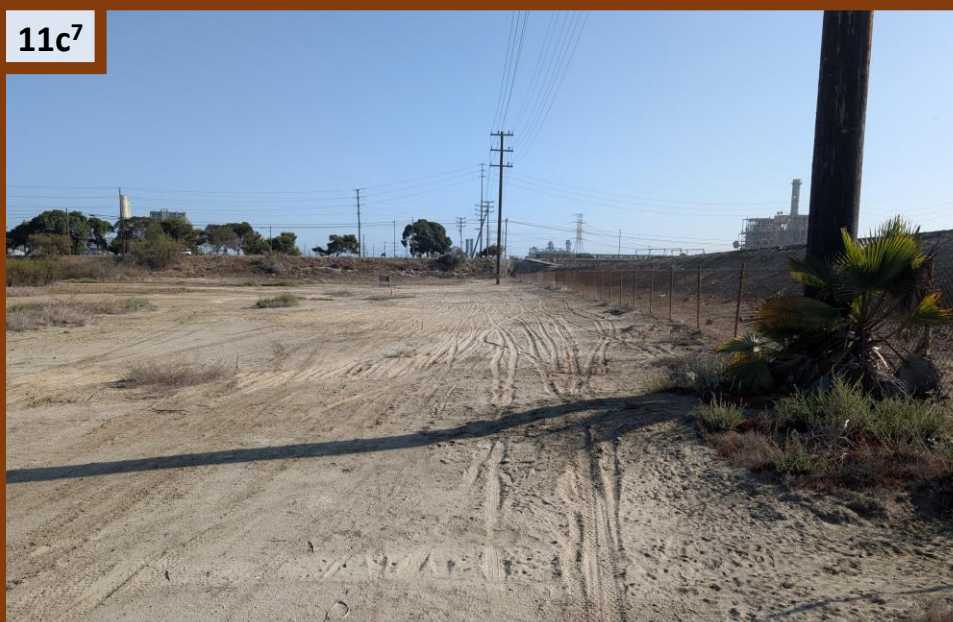
11c⁵

Bryant Lease West



11c⁶

Bike tracks leading down from 2nd street and SGR.



11c⁷



11c⁸

Bike tracks along fence line and 2nd street.



11d¹

Bryant Lease West



11d²

Demolished bike ramps built by motorized bikers.



11d³



11d⁴

Demolished bike ramps built by motorized bikers.

Steamshovel Slough



No evidence of nesting birds along Synergy service road on LCWA property.